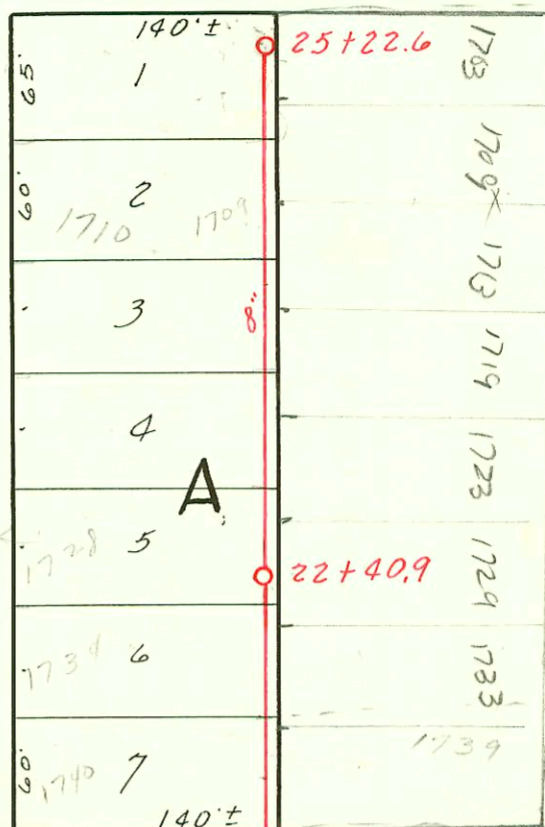
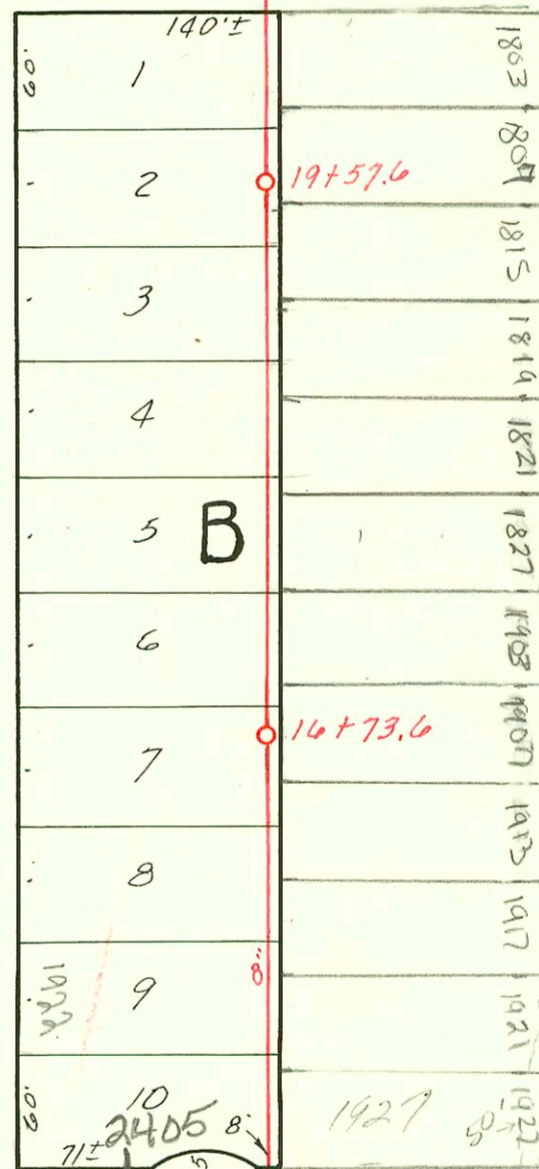


HYDRAULIC AVE.



KANSAS AVE.



MINNESOTA

- 2003-02950 - Repair Roto Rooter  
 #520 - Inf. - 2405 N. Minnesota R 11/13/03 - 4" SCH40 PVC 1 TWIN CO, 2 Fernco  
 #73139 60 - 7-20-79  
 #3019 Tap 1739 Looman (21+26.9) New Conn. - 1739 Looman - C71791 - 5-16-79 (Tap 21+58.9)  
 #3012 Tap 1703 Looman (24+93.2)  
 #3013 Tap 1709 Looman (24+50.6)  
 2001-3380 #3014 Tap 1713 Looman 11-21-01 - 23+92.6 - Predco Saddle, TWINCO, 1045 130' E of MH 25+22.6  
 #3015 Tap 1719 Looman Wichita Plbg. Co.  
 #3016 Tap 1723 Looman  
 #3017 Tap 1729 Looman  
 96-116567 #3018 Tap 1733 Looman (21+79.9)  
 96-20321-7 12-6-96 1803 Looman  
 9618761 #3039 Tap 1803 Looman  
 #3040 Tap 1807 Looman R-11/30/99 - Al Henning - No msmt - 4" sch 40, 1 TWIN CO. Tied back to clay tile  
 #3041 Tap 1813 Looman R-4/14/03 - 4" PVC 40 - Wye not uncovered (Approx. 4' east) Replaced all but lower 3', 14" x pt shallow, (19+16.6)  
 22134 #3042 Tap 1817 Looman R-12-2-88 (91' E of 19+57.6) (18+66.6)  
 #3043 Tap 1821 Looman (18+16.6)  
 #3044 Tap 1827 Looman (17+61.8)  
 #3045 Tap 1903 Looman L-1-3-50 (11'6 ft E. of 16+73.6) (16+62.0)  
 +3327-7 #3046 Tap 1907 Looman  
 #3047 Tap 1913 Looman Wichita Plbg. Co.  
 #3048 Tap 1917 Looman (16+15.8)  
 #3049 Tap 1921 Looman  
 #3050 Tap 1927 Looman R-3-21-84

LAT. I, DIST. T, S. S. #12

W. B. CARTER, 1941

