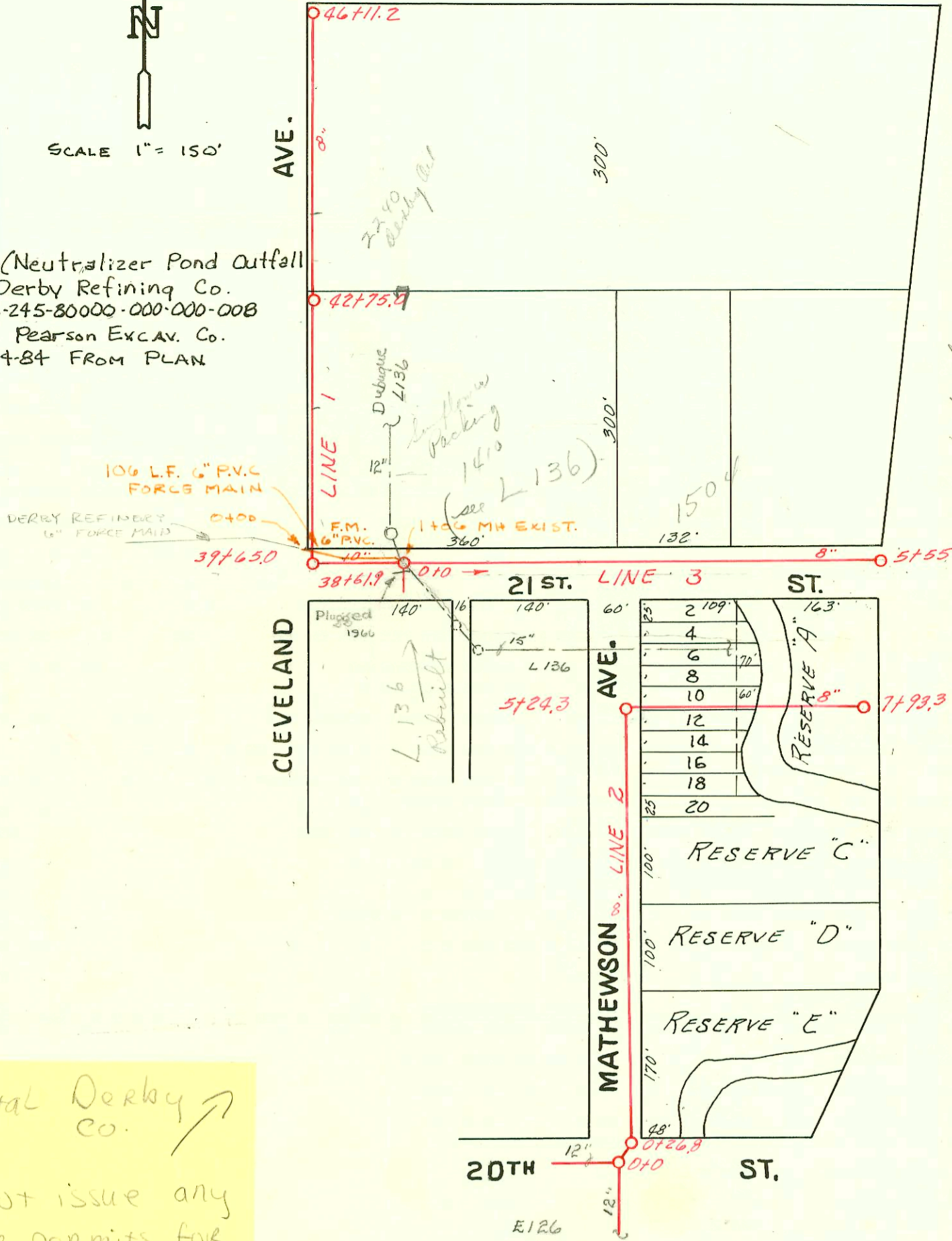


Priv. S.S. (Neutralizer Pond Outfall Line) for Derby Refining Co.
P.L.# 468-76-245-80000-000-000-008
Built By Pearson Excav. Co.
Booked 5-14-84 FROM PLAN



Coastal Derby Co. ↗
Do NOT issue any sewer permits for Derby oil unless cleared with Bob Shepherd.
7/10/89
B. Roark

1" = 150'

CONSTRUCTION RECORD

SERVICE RECORD

STATION	ELEVATION		Depth	MANHOLE	4-INCH "Y" BRANCHES		No. of Permit		House Number		DATE OF PERMITS	
	Ground	Grade			North West	South East	North West	South East	North West	South East	North West	South East
0+0	121.60	116.50	5.10	0+0								
	122.10	116.53	5.57	0+26.8								
						0+36.0						
						0+51.6						
1+0	121.80	116.60	5.20			0+76.2						
						1+02.6						
						1+27.5						
						1+55.4						
						1+74.5						
2+0	121.60	116.70	4.90			2+02.7						
						2+28.2						
						2+52.0						
						2+79.8						
3+0	121.70	116.80	4.90			3+03.2						
						3+28.1						
						3+54.8						
						3+79.2						
4+0	122.30	116.90	5.40			4+03.8						
						4+27.4						
						4+51.9						
						4+76.0						
5+0	122.20	117.00	5.20			5+00.9						
	122.30	117.02	5.28	5+24.3	Wyes North							
						5+38.0						
						5+62.4						
						5+86.4						
6+0	123.40	117.19	5.21			6+10.4						
						6+34.7						
						6+59.9						
						6+86.2						
7+0	119.10	117.29	1.81			7+11.5						
						7+36.2						
						7+60.1						
						7+82.0						
	123.20	117.39	5.81	7+93.3								
0+0	121.10	117.57	3.53	0+0		0+07.7						
						0+34.5						
						0+58.7						
						0+83.8						
1+0	120.90	117.67	2.23			1+11.5						
						1+36.6						
						1+63.0						
						1+89.8						
2+0	121.60	117.77	3.83			2+14.2						
						2+41.7						
						2+65.6						
						2+93.9						
3+0	122.20	117.87	4.33			3+17.3						
						3+45.8						
						3+89.9						
						3+97.5						
4+0	122.80	117.97	4.83			4+22.4						
						4+49.3						
						4+74.1						
						4+98.3						
5+0	122.10	118.07	3.03			5+25.9						
						5+49.7						
	123.00	118.13	4.87	5+55.5								
42+0	121.80	117.83	3.97			42+30.1						
				42+75.7		45+02.0						
43+0	121.80	117.91	3.89			43+11.5						
44+0	122.20	117.99	4.21			44+08.2						
45+0	122.00	118.07	3.93			45+35.9						
46+0	122.50	118.17	3.33	46+11.2		45+94.5						
PRIV. S. for Derby Refining Co.												
0+00	120.5	118.50	2.0									
	120.9	118.23	2.7	1+06 EXIST								

Line # 2

Line # 3

Line #1 Cont.

B 2482 - 1504 S. 21st - Bradford Pkwy - 12:11.64 top (3+97.5) (add...)
 # 18023 - 3/31/87 - Dean Morris - NK for 1100 E. 21st (Derby) - (TAP at 417' N of 1st MH W. of 38+61.9)