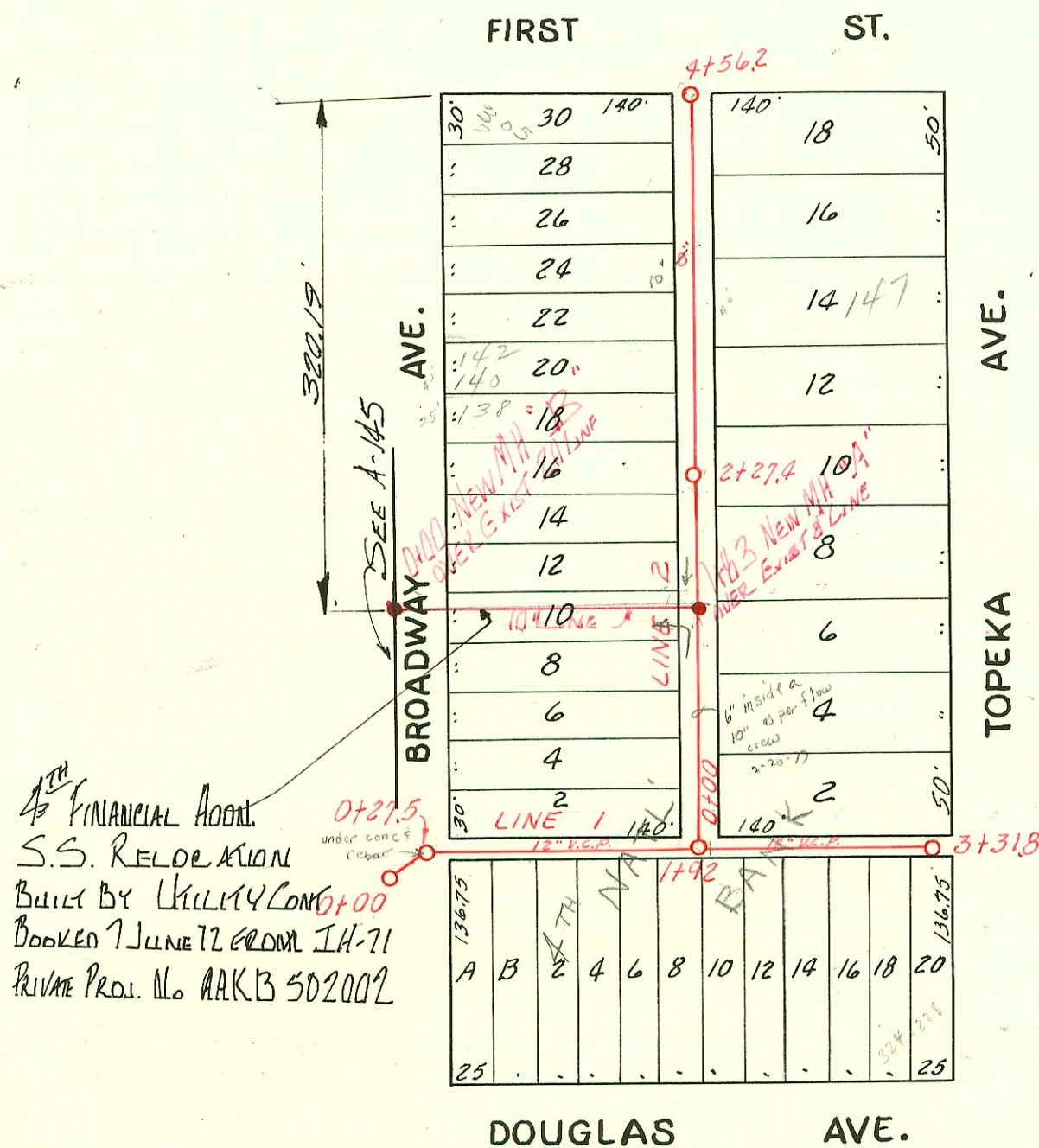


NOTE: See book A page 145 for Original Sewer and assignment of "ys".



- Deal # C2861 - 147 N. Topeka - Al Henning 4-27-67
- Deal # C2862 - 138 N. Broadway - Al Henning 4-27-67
- Deal # C2865 - 140-142 N. Broadway - Al Henning 4-27-67
- Deal Off C23395 - 318 E Douglas - Al Henning - 3/23/71 (2+19.3)
- " C23396 - 320 " " " (2+27.3)
- " C23397 - 322 " " " (2+63.6)
- C 24039 - 137 N. Topeka - Seal off 4-29-71 J.C. Sewer
- C 29685 - 316 E Douglas - Seal off - Al Henning - 12-27-71
- C 29686 - 314 E Douglas - Seal off - Al Henning - 12-27-71
- C 29687 - 312 E Douglas - Seal off - Al Henning - 12-27-71

6-8-1-(2)

RECONSTRUCTION OF
SUBMAIN B, & LAT. A, S. S. #1
W. B. CARTER 1946

CONSTRUCTION RECORD

SERVICE RECORD

STATION	ELEVATION		Depth	MANHOLE	4-INCH "Y" BRANCHES		No. of Permit		House Number		DATE OF PERMITS	
	Ground	Grade			North West	South East	North West	South East	North West	South East	North West	South East
0+00				0+00 0+27.5								
1+00						0+74.2						
						1+28.9 Not Conn. 1+47.0 1+53.2 1+65.4 1+78.8						
				1+92.0		1+99.1						
2+00						2+19.3 2+27.3 2+63.5 2+98.0						
3+00						3+16.5 3+28.3						
				3+31.8								

LINE 1

NOTE: Risers go to edge of pavement

STATION	ELEVATION		Depth	MANHOLE	4-INCH "Y" BRANCHES		No. of Permit		House Number		DATE OF PERMITS	
	Ground	Grade			Y WEST	Y EAST	North West	South East	North West	South East	North West	South East
0+00				0+00	0+06.4 0+29.7 0+54.8 0+72.2 0+74.9 0+83.2	0+51.8 Riser 0+60.0						
1+00					1+31.2 1+35.0 1+63.3 1+73.5	Riser 0+86.4						
					1+76.9		CH1919		132 N. Broadway (Penny)		10-29-73	
2+00				2+27.4	2+19.9 2+24.0							
					2+31.8 2+34.0 2+51.2 2+54.3 2+80.5							
3+00					3+00.3 3+26.8							
4+00					4+00 4+26.0							
				4+56.2								

LINE 2

FOURTH FINANCIAL AODON S.S. RELATION
 2+00 111.0 104.9 6.1 0+00 NEW MA EXIST 20" LINE

1+00 110.3 105.50 4.8 1+83 NEW MA EXIST 8" LINE

- C 29029 - 125-119 at top of - Seal off - Al Henning 11-16-71
- C 29028 - 115-119 N. Topeka - Seal off - Al Henning 11-16-71
- C 19411 - 310 E. Douglas - Seal off - Al Henning 5-21-70
- C 19410 - 300 E. Douglas - Seal off - Al Henning 5-21-70
- C 10238 - 154 N. Broadway - Central air conditioning 8-27-68-top (2+69.8)
- # 1161 - Top - 132-34 N. Broadway - 9-10-49 - Moore - Robertson Plbg. Co.
- # 2973 - Top - 316 E. Douglas 1-3-50 Baker Plbg. Co.
- # 1276 - Top - 1529 Broadway - 6-28-66 - Davidson
- B. 3720 Seal off 328 E. Douglas (Blk) Al Henning - 6-29-65