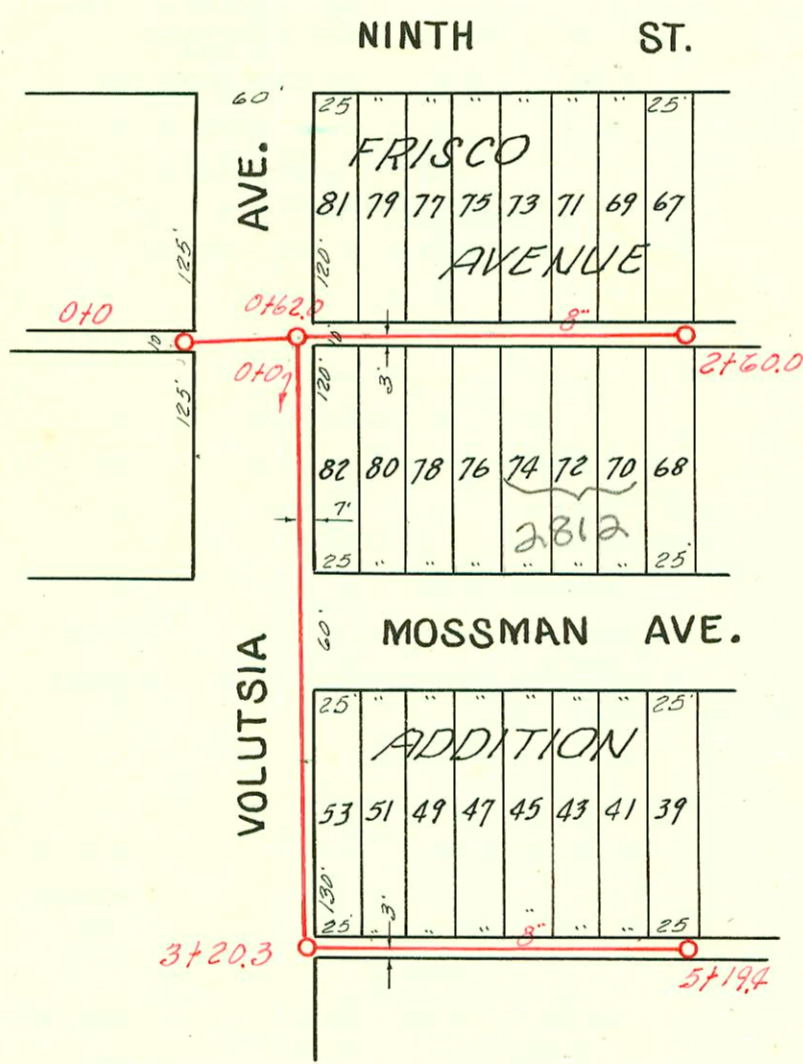


LAT. U, DIST. E, S. S. # 12  
 W. B. CARTER, 1945



EASEMENT  
 Made Oct. 18, 1943; Filed Nov. 22, 1943.  
 From C. P. and Muriel O. Fowler,  
 For all public Utilities.  
 The N. 5' of lots 36 to 82 even, both inclusive, and  
 the S. 5' of lots 35 to 81 odd, both inclusive All  
 in Frisco Avenue Addition to the City of Wichita.

LAT. T, DIST. E, S. S. # 12  
 W. B. CARTER 1943

432-Tap-912 U. Volutsia - 6-3-49 J.H. Hanna  
 F 3122- Tap- 3112-14 E. Mossman - 7-2-51 - Frederick Plog. Co

CONSTRUCTION RECORD						SERVICE RECORD						
STATION	ELEVATION		Depth	MANHOLE	4-INCH "Y" BRANCHES		No. of Permit		House Number		DATE OF PERMITS	
	Ground	Grade			North West	South East	North West	South East	North West	South East	North West	South East
0+0	132.40	121.82	10.58	0+0								
1+0	134.30	122.01	12.29	0+62.0	4" Stub N.	4" Stub NE	#1096	#1095	2905-7 E. 9th	948-50 N. Volutsia	732-30 N. Volutsia	9-24-43
					1+06.4	1+18.2						9-20-43
					1+21.2	1+36.8						
					1+48.6	1+76.8	#1163	#1170	2811-12 E. 9th	2812-10 E. Massman		10-18-43
					1+73.8	1+95.5						10-18-43
2+0	132.40	122.92	9.48	2+0	2+11.0		#1164		2817-19 E. 9th			10-18-43
					2+34.7							
2+80	133.20	123.10	10.10	2+60.0		2+50.9						
0+0	132.80	122.04	10.76	0+0	West	East						
						0+80.8	#1166		2800-02 E. Massman			10-18-43
						0+92.7						
						0+95.7	#1165		2823-30 E. Massman			10-18-43
1+0	131.60	122.34	9.26		1+14.9	2+21.0		#1167	2803-5 E. Massman			10-18-43
2+0	131.20	122.64	8.56									
3+20.3	131.00	123.00	8.00	3+20.3	NORTH	SOUTH	#1163		2811-03 E. Massman			10-18-43
4+0	132.60	123.40	9.20		4+27.5	4+24.5						
					4+55.2		#1169		2817-19 E. Massman			10-18-43
					4+70.9							
					4+95.6							
5+19.4	134.90	124.00	10.90	5+19.4								
MH 2+60 above = 2	+10	+10		0+0	0+13.7	0+10.7	#1338	#700	2823 E. North Massman	2823 E. Massman	2-27-47	9-23-46
	124.0	113.60			0+41.8	0+38.8	#1539	#701	2827 E. 9th	2828 E. Massman	2-27-47	9-23-46
					0+67.9	0+64.9						
					0+93.7	0+90.7						
1+0	125.6	114.10			1+20.4	1+17.4	#1684	#702	2903 E. 7th	2902 E. Massman	3-25-47	9-23-46
					1+43.9	1+40.9	#1685	#703	2906 E. 7th	2906 E. Massman	3-25-47	9-23-46
					1+68.2	1+65.2						
					1+95.3	1+92.3						
2+0	126.1	114.60			2+20.6	2+17.6	#1714	#704	2911 E. 7th	2912 E. Massman	9-23-46	9-23-46
					2+41.7	2+38.7	#1714	#705	2915 E. 7th	2918 E. Massman	4-1-47	9-23-46
					2+69.3	2+66.3						
3+0	126.0	115.10		2+98.9	3+19.1	3+16.1	#1070	#706	733 N. Chautauque	2922 E. Massman	12-10-46	9-23-46
					3+45.7	3+42.7	#1071	#707	917 N. Chautauque	2923 E. Massman	12-10-46	9-23-46
					3+70.4	3+67.4						
					3+94.6	3+91.6						
4+0	126.6	115.60			4+77.0	4+74.0	#1835		355 N. Chautauque		6-10-65	
5+0	126.6	116.10			5+04.0	5+01.0	#1076				12-10-46	
					5+28.2	5+25.2						
					5+53.0	5+50.0						
					5+79.0	5+76.0						
6+0	127.6	116.60W) 118.60E)		5+99.2	6+08.5	6+05.5						
	127.6				6+30.0	6+27.0						
					6+61.3	6+58.3	#2497		3014 Massman			11-30-45
					6+82.5	6+79.5						
7+0	129.9	119.60			7+07.2	7+04.2						
					7+33.0	7+30.0	5420		3101 E. 7th			10-3-57
					7+61.5	7+58.5						
					7+86.7	7+83.7	#1997		3022 E. Massman			1-8-48
8+0	131.1	120.60			8+07.2	8+04.2	#2292		3034 Massman			9-19-45
					8+29.0	8+26.0						
					8+57.3	8+54.3						
					8+75.0	8+72.0						
9+0	135.2	121.60 125.50		8+95.5		Stub E.						
9+66		126.65		9+66.0		9+06.0						
						9+30.6						
						9+55.0						

TO GRADE TO GROUND

S. of N. Alley

ADD 10'

Note ↗

9  
5  
132

Reconnection permits  
C22184-89 issued to Utility  
Contractors 12-14-70  
(lines being rebuilt - old line  
to be abandoned) to permit

#1073 Top - 948 N. Chautauque - 12-10-46 Simmons Plumb Co.  
 #1111 Top - 2814 1/2 E. Massman - 12-16-46 Simmons Plumb Co.  
 #373 Top - 947 N. Hillside 7-8-48 Albert J. Hoff (8+95.5 m. H. Top) → Refer to Page 2-132.  
 #433 Top - 908 N. Volutsia 6-3-49 Jim Hanna THIS IS NOT an active  
 #1835 36 - Seal off 948 N. Chautauque - headgirth Pkty. 6-10-65 CCM - BSR