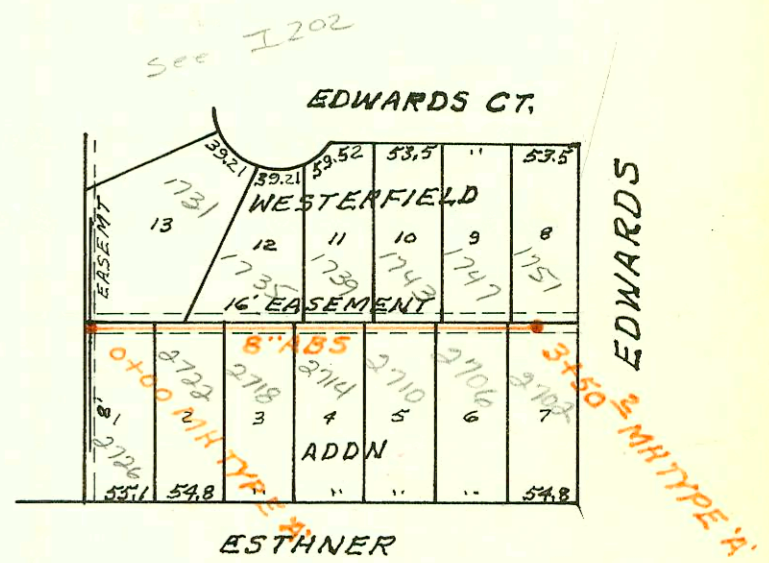


RELOCATION OF SAN. SEWER (LAT U)
 IN CONNECTION WITH CONSTRUCTION OF
 MAIN STORM WATER DRAIN #8
 BUILT BY: UTILITY CONTRACTORS INC.
 BOOKED: MAY 24, 1971 FROM IH-77
 PROJ No KANSAS A-5-2

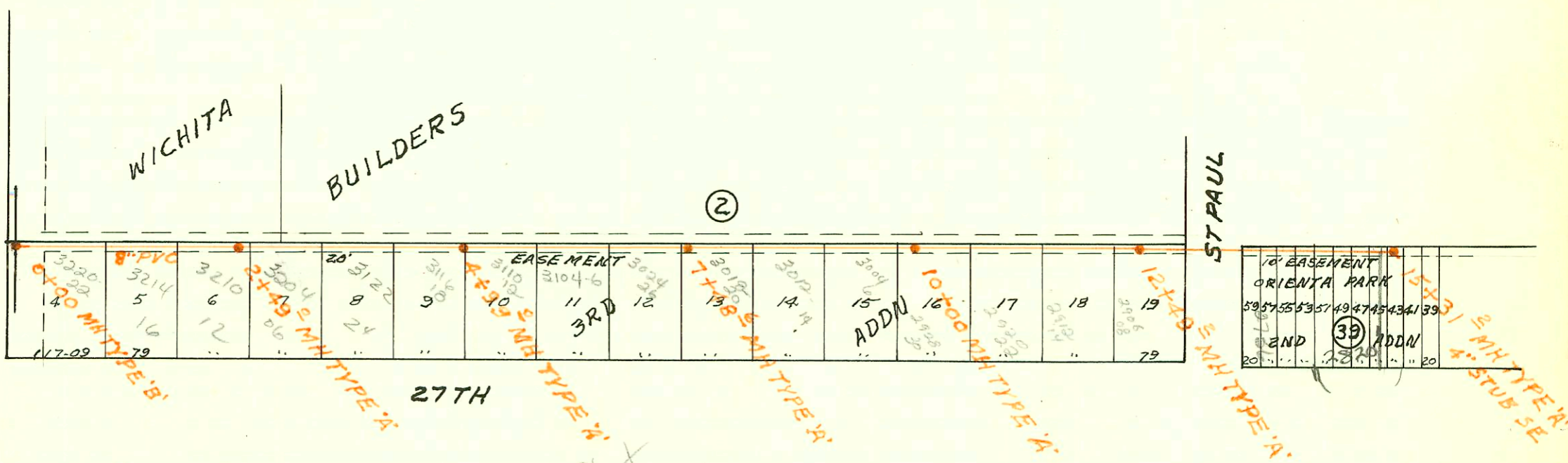
S.S. FOR LOTS 1-13 BLK 1 WESTERFIELD ADDN
 BUILT BY: C&C DITCHING
 PROJ. No 468-76-245-80865-000-000-008
 BOOKED 3-25-80 FROM IH70

on map



SCALE: 1" = 150'

ESTHNER



Plat 7-69

LATERAL 121 SAN SEWER No 22
 BUILT BY: MID STATES CONST. CO.
 PROJ. No 468-76-245-80111-000-000-001
 BOOKED 5-6-80 FROM JPC-SV11

on map

SCALE: 1" = 150'

CONSTRUCTION RECORD						SERVICE RECORD						
STATION	ELEVATION		Depth	MANHOLE	4-INCH "Y" BRANCHES		No. of Permit		House Number		DATE OF PERMITS	
	Ground	Grade			North West	South East	North West	South East	North West	South East	North West	South East
0+00	139.2	125.70	13.5	0+00								
1+00												
	138.8	126.92	11.9	1+37								
	139.2	127.23	12.0	1+94								
2+00												
						2+33			3014 E. Mossman			12-14-70
3+00												
					3+05	3+05	32188	122184	3101 E. Mossman	3018 E. Mossman	12-14-70	12-14-70
					3+62	3+62	22139	22139	3022 E. Mossman	3022 E. Mossman	10-21-80	12-14-70
					3+85	3+85	224105	224105	3024 E. Mossman	3024 E. Mossman	11-18-77	12-14-70
4+00												
	145.6	135.47	10.1	4+74.6								
						4+91			947 N. Hulsie			12-14-70
5+00												
	142.8	136.00	6.8	5+08								
<p>SAN SEWER FOR LOTS 1-13 BLK I WESTERFIELD ADDN</p> <p>6/4/01 SOP E. Marz</p>												
0+00	106.6	100.69	5.9	0+00								
					0+83.6	0+86.7	225	276328	1731 S. Edwards	2722 S. Edwards	5-6-80	1-24-80
1+00	106.5	101.09	5.4		1+30.6	1+14.3	226	276327	1735 S. Edwards	2718 S. Edwards	5-6-80	1-24-80
					1+84.5	1+78.0	715	275842	1739 S. Edwards	2714 S. Edwards	7-9-80	12-21-79
2+00	106.6	101.49	5.1									
					2+60.9	2+52.2	225	276326	1743 S. Edwards	2710 S. Edwards	5-6-80	1-24-80
3+00	106.7	101.89	4.8		2+85.5	2+05.4	193	276325	1747 S. Edwards	2706 S. Edwards	4-29-80	1-24-80
	107.1	102.09	5.0	3+50.2	3+29.3	3+42.2	192	276324	1751 S. Edwards	2702 S. Edwards	4-29-80	1-24-80
<p>LATERAL 121 SS N^o 22</p>												
0+00	103.00	93.90	9.1	0+00								
						0+53.0		276228	3220-22 W 27 th S			1-21-80
1+00	103.8	94.10	9.7									
						1+65.1		2107	3214-16 W 27 th S			12-15-80
2+00	104.8	94.30	10.5			2+07.6		2106	3210-12 W 27 th S			12-15-80
	103.7	94.40	9.3	2+49.0								
3+00	102.3	94.50	7.8			3+30.1		2105	3204-6 W 27 th S			12-15-80
						3+63.0		2104	3122 W 27 th S			12-15-80
4+00	101.2	94.70	6.5									
	101.2	94.90	6.3	4+99.0								
						4+49.7		276227	3116-18 W 27 th S			1-21-80
5+00	101.2	94.90	6.3									
						5+37.0		276226	3110-12 W 27 th S			1-21-80
6+00	101.4	95.10	6.3									
						6+23.0		276225	3104-6 W 27 th S			1-21-80
7+00	101.9	95.30	6.6			7+17.4		276224	3024-36 W 27 th S			1-21-80
	101.7	95.40	6.3	7+48.6								
						7+62.7		276223	3078-50 W 27 th S			1-21-80
8+00	101.8	95.50	6.3									
						8+56.6		276222	3012-14 W 27 th S			1-21-80
9+00	101.3	95.70	5.6									
						9+37.0		276447	3004-6 W 27 th S			2-12-80
	101.2	95.90	5.3	10+00.0		10+10.8		276221	2728-30 W 27 th S			1-21-80
11+00	101.5	96.10	5.4									
						11+01.0		276220	2920-22 W 27 th S			1-21-80
12+00	100.5	96.30	4.2									
	100.5	96.40	4.1	12+49.2				8130	2912-14 W 27 th S			7-19-83
						12+78.2		8129	2906-8 W 27 th S			7-19-83
13+00	100.9	96.55	4.4									
14+00	101.6	96.85	4.8									
						14+24.0		276348	2736-5 St Paul			1-25-80
15+00	102.0	97.15	4.9									
	102.3	97.25	5.1	15+31.2				2825	2825 W 27 th S			10-14-01

93-284647 11-3-93 3022 E. Mossman - Bowers - 4' ABS 40