

WHEELER AVE.

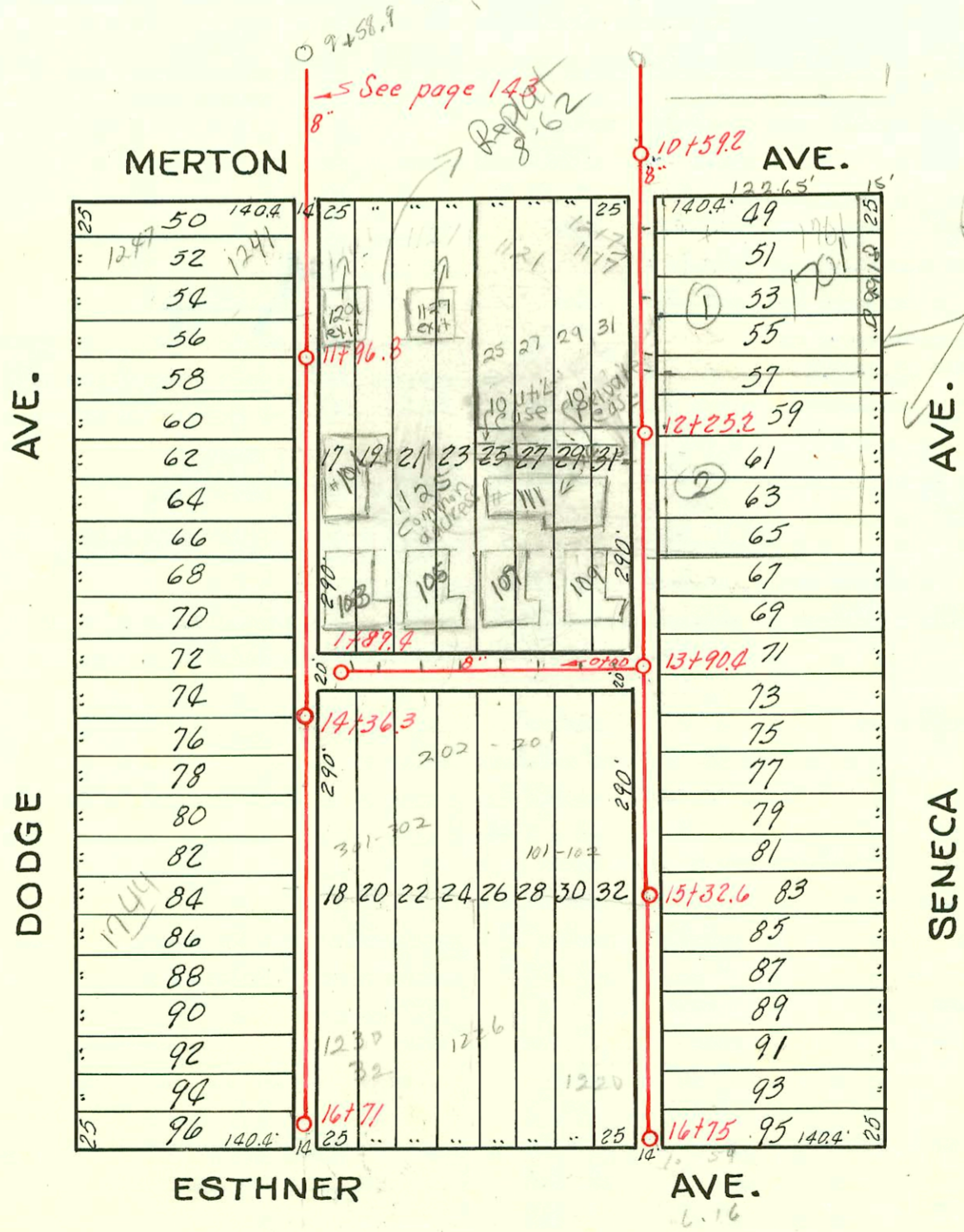
EASEMENT

A strip of land 10' in Width, 5' on each side of a line beg. 180' East of NW. cor. of N.W. 1/4 Sec. 32, 27-1E of 6th P.M. running thence south to a point 180' East of the west line of said N.W. 1/4 of Sec. 32 and 630' South of Place of beginning.

From M. Aley Deed # 1355

SENECA AVE.

Unplatted



Replat - see 8-62
Block 1
Lots 1, 2
Mapico
Add.

New line to
Aley Park

Dist.
PART OF LAT. E, S. S. # 21

W. B. CARTER 1930

CONSTRUCTION RECORD							SERVICE RECORD					
STATION	ELEVATION		Depth	MANHOLE	4-INCH "Y" BRANCHES		No. of Permit		House Number		DATE OF PERMITS	
	Ground	Grade			North West	South East	North West	South East	North West	South East	North West	South East
10+0	102.14	96.65	5.49	10+59.2								
11+0	102.52	96.75	5.77		11+28	11+04.5	#133	2078	1117 Merton	1701 S. Seneca	6-4-48	6-15-42
						11+31						
						11+49.5		#2335		1715 S. Seneca		10-15-45
						11+72.5						
12+0	102.32	96.85	5.47	12+25.2		11+96.5	#480		1709 S. Seneca		19-25-31	
						12+20.5	#5407		1707 S. Seneca		3-29-52	
						12+44.5	#4456		1713 S. Seneca		12-15-42	
						12+71.8	#6770				10-26-53	
13+0	102.52	96.95	5.57			12+95.2	94-19857	#	1125 Merton	1717 S. Seneca	12-29-4	
						13+20		#6724				12-6-51
						13+46.3						
14+0	102.12	97.05	5.07	13+90.4		13+72.5						
						13+97.5		#3324		1731 S. Seneca		12-11-50
						14+20.5		#434		1737 S. Seneca		6-3-49
						14+44.5						
						14+68.5	C70747				3-20-79	
15+0	102.12	97.15	4.97			14+92.5	C70746				3-20-79	
						15+19.5		#198		1741 S. Seneca		3-27-50
						15+43.2						
						15+69.5		#5276		1747 S. Seneca		7-18-51
16+0	102.32	97.25	5.07			15+91.2		#2128		1751 S. Seneca		2-29-50
						16+03.5						
						16+27						
						16+41.5		#3759		1202 Esthner		1-22-51
						16+63						
6+0	102.53	96.50	6.03			6+79.4		#1042		1614 S. Dodge		7-30-49
7+0	102.83	96.60	6.23			7+08						
						7+36	2062 00766		1624 Dodge		3-14-02	
						7+62.4	96-401-3				6-25-96%	
						7+86.4	#2937				5-12-49	
8+0	102.53	96.70	5.83			8+09.6		#2681		1642 S. Dodge		9-26-52
						8+37.6						
						8+61		#1193		1649 S. Dodge		10-19-43
						8+85.5						
9+0	102.53	96.80	5.73	9+58.9		9+11.7		#515		1652 S. Dodge		7-28-47
						9+42.2		#3502		1120 Merton		7-18-55
						9+45.2		#2010		1658 S. Dodge		5-19-41
						9+76.5						
10+0	101.63	96.90	4.73			10+01						
11+0	101.73	97.00	4.73			11+12						
						11+42		#4920		1241 Merton	1237 Merton	6-9-51
						11+45		#393				7-13-48
						11+71	11+37.5	#19125		1200 Merton		6-17-70
12+0	102.13	97.10	5.03	11+96.8		12+0						
						12+24						
						12+47.6		94-19857		1125 Merton		12-2-94
						12+75		#4933		1720 S. Dodge		6-14-51
13+0	102.61	97.20	5.41			12+99						
						13+22.6		#4650		1724 S. Dodge		5-14-51
						13+50.5						
						13+74.5		#4647		1730 S. Dodge		3-26-53
14+0	102.11	97.30	4.81			14+00.5						
						14+25		4646		1736 S. Dodge		3-26-53
						14+50.4						
						14+76.4						
15+0	102.01	97.40	4.61			14+99.4		#4916		1744 S. Dodge		2-24-51
						15+24						
						15+47	15+33.3	C70748		1536 Esthner		3-20-79
						15+71.4	15+70.5	C70749		1536 Esthner		3-20-79
16+0	101.71	97.50	4.21			15+96.5						
						16+18	16+21	#6133		1220 Esthner		8-11-53
						16+44.6		#5278		1200 Esthner		7-18-51
16+71	101.73	97.58	4.15	16+71		16+66.5		#2139		1750 S. Dodge		8-12-52
0+0	102.28	97.20	5.0	0+0		0+19.5	0+22	94-19857		1125 Merton		12-2-94
						0+41	0+43.5					
						0+64	0+66.5	94-19857	126632	1125 Merton	1226 Esthner	12-2-94
1+0	102.20	97.30	4.90			0+91.6	0+94.1	94-19857	126633	1125 Merton	1226 Esthner	12-2-94
						1+16	1+18.5					12-1-78
						1+39.5	1+42					
						1+66	1+68.5					
1+89.4	102.10	97.39	4.71	1+89.4		1+82.7	1+85.2	94-19857		1125 Merton		12-2-94

#538 - Top 1727 S. Seneca - 4-14-50 - Eugene Reynolds
 #3252 - Top - 1232 Esthner - 9-6-50 Ray. M. Coy
 #4637 { Top - 1714 S. Dodge - 5-11-51 Frederick Plog. Co.
 at 11+93.6
 #4921 - Top - 1247 Merton - 6-9-51
 #4644 - Top - 1701 S. Seneca - 4-18-51
 C74268 - 1620 S. Dodge - 9-13-79 - Repair
 94-19857 - 12-2-94 - 1125 West Merton Bld 101 - 10+36.7 = 4" S.O.R. 35
 94-19857.7 - 12-2-94 - 1125 West Merton = 12+97.6 - 4" S.O.R. 35 N/E
 2198 - 1121 W Merton 10-6-54 - Frederick Plog. Co. - Sep
 Sep C 70746 - 1226 ESTHNER #101 - 3-21-79 15+37.6
 Sep C 70747 1226 ESTHNER #102 - 3-21-79 14+77.6