

25	32 140'	8175.6	1 140'	25
"	31		2	"
"	30		3	"
"	29		4	"
"	28		5	"
"	27		6	"
"	26		7	"
"	25		8	"
"	24	6+65	9	"
"	23		10	"
"	22		11	"
"	21		12	"
"	20		13	"
"	19		14	"
"	18		15	"
25	17 140'		16 140'	25

DOOLEY AVE.

ST.	25	32 140'	140'	1	25
"	"	31		2 1401	"
"	"	30		3	"
"	"	29		4	"
"	"	28		5	"
"	"	27		6 1415	"
"	"	26		7 1419	"
"	"	25		8	"
"	"	24		9 2118.2	"
"	"	23		10	"
"	"	22		11	"
"	"	21		12	"
"	"	20		13	"
"	"	19		14	"
"	"	18		15	"
25	"	17 140'	140'	16	25

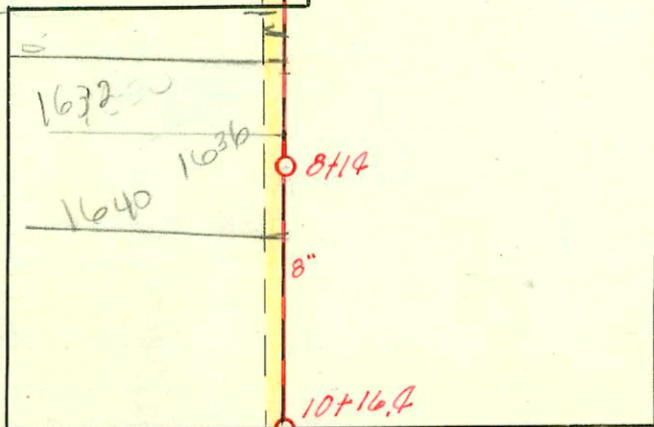
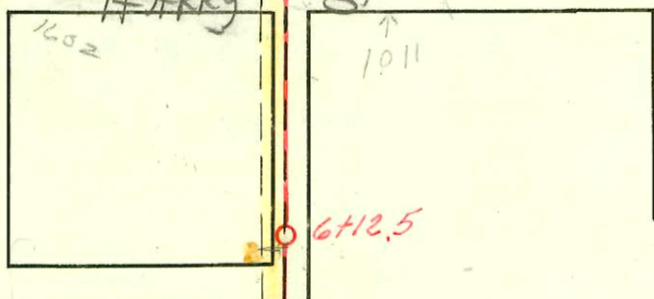
FIGG AVE.

25	28 140'	140'	1 1501	25
"	27		2	"
"	26		3 1507	"
"	25		4	"
"	24		5 1511	"
"	23		6	"
"	22		7 2105.4	"
"	21		8	"
"	20		9 1543	"
"	19		10	"
"	18		11 1545	"
"	17		12	"
"	16		13	"
25	15 140'	140'	14 1549	25

SENECA

WALNUT

WHEELER AVE.



MERTON AVE.

1545 S Walnut
 Wanda Farmer with Roto Raster
 called 7/12/04 to advise her
 crew for Mr. and Mrs. Trivedi
 found it to run along the
 10' of lot - 10' inches S. of
 N.P.L. They did not find
 it to be on lot for
 1543. BR 7/12/04

EASEMENT
 A strip of land 10' in width, 5' on each side
 of a line. Beginning 180' east of the N.W. corner
 of N.W. 1/4 of Sec. 32, Twp. 27, R. 1 E of the 6th
 P.M. running thence south to a point 180' east
 of the west line of said N.W. 1/4 of Sec. 32 and
 630' south of place of Beginning.
 Deed from M. Aley
 Deed No 1355.

2003-02867-11303-1537 S Walnut.
 Wichita Exc- 4" clay tile sealed off
 4.5' N of MH 2105.4 (2100.9) and
 2' from main - Dirt alley cut

Trailer
 11/6/75-6'x8' wye 13175 Walnut
 Joe McDonald - 4-24-58
 C-24570
 7813 Garage 1433 Walnut R. al Henning 8-14-58 (1+30.2)
 8250 Top 1407 S Walnut Joe McDonald 10-13-58 (3+56)
 12051 Top 1332 S Seneca Robert Jost 12-11-59 (5+43.5)
 16187-top trailer-1336 S. Seneca Brown Plog 9-27-62 (5+11)
 B914-1002-22 Harry-Gaulding Plog 2-24-64-top (3+22.4)
 C14308-1014 W. Harry - al Henning - 6-3-69 - (conn. with 1002 W. Harry
 at 37224) sealed at alley 1/10/04

CONSTRUCTION RECORD

SERVICE RECORD

Line between Seneca and Walnut
Fig 9 to Walker.

STATION	ELEVATION		Depth	MANHOLE	4-INCH "Y" BRANCHES		No. of Permit		House Number		DATE OF PERMITS	
	Ground	Grade			North West	South East	North West	South East	North West	South East	North West	South East
0+0	103.26	95.44	7.82	0+0	0+52.5	0+49.5	#30859		1440 S. Seneca		3-8-72	
1+0	103.26	95.54	7.72		0+77	0+74	#176		1235 S. Walnut		9-20-41	
					1+00	0+97	#36		1420 S. Seneca		5-22-33	
					1+27.3	1+24.3			1429 S. Walnut		6-14-54	
					1+51	1+48	#19853		1430 S. Walnut		12-21-57	
					1+74	1+71	#1434		1420 S. Walnut		7-9-54	
2+0	104.86	95.64	9.22	2+18.2	2+00	1+97	#2188		1420 S. Seneca		8-8-52	
					2+27.7	2+24.7	#1539		1419 S. Walnut		7-21-54	
					2+49.5	2+46.5	#2		1418 S. Seneca		1-2-32	
					2+74	2+71	#1106		1418 S. Seneca		7-27-59	
3+0	103.96	95.74	8.22		3+01	2+98	#391	#1481	1406 S. Seneca	1411 S. Walnut	7-9-31	7-13-54
					3+29.4	3+26.4			1404 S. Seneca		3-19-57	
					3+51.8	3+48.8	#1114		1404 S. (addn)		3-31-72	
					3+79.3	3+76.3	#31291		1402 S. Seneca	1011 Dooley	2-27-34	1-27-45
4+0	103.48	95.84	8.64		4+03	4+0	#17	#1992	1011 Seneca			
				4+53	4+29.8	4+26.8			1011 Seneca			
5+0	104.18	95.94	8.24		5+08.8	5+05.8	#1683		1011 Dooley	1010 Dooley	12-23-30	5-20-66
					5+32	5+29	#23634	#246	1336 S. Seneca		12-23-30	2-16-43
					5+55.8	5+52.8	#355		1336 S. Seneca		10-19-84	
					5+80.8	5+77.8	#24		1336 S. Seneca		1-16-31	
6+0	104.88	96.04	8.84		6+10.2	6+07.2	#1		1323 S. Seneca		1-1-31	
					6+34.8	6+31.8						
				6+65	6+57.5	6+54.5	#51	#36046	1322 S. Seneca	1309 S. Walnut	3-25-35	11-21-72
7+0	106.09	96.14	9.95		6+84.8	6+81.8			1322 S. Seneca	1313 S. Walnut	3-10-55	12-21-72
					7+09	7+06	#11		1320 S. Seneca	near	4-2-96	
					7+31.8	7+28.8					1-6-31	
					7+57.5	7+54.5						
					7+81.3	7+78.3						
8+0	106.89	96.24	10.65		8+09	8+06	#17		1302 S. Seneca		8-14-73	
					8+34.8	8+31.8					2-28-36	
					8+62.3	8+59.3						
8+75.6	107.69	96.33	11.36	8+75.6			#252		1300 S. Seneca		4-13-72	6-24-48

#6021 - Top - 1528 S. Seneca - 10-3-51 - Thompson Plog, Co.
 Top - 1512 S. Seneca - 45.2 North 6+12.5
 #3696 - Top - 1543 S. Walnut - 1-75-51 Eugene Reynolds
 #5854 - Top - 1660 S. Seneca - 9-22-53 C.G. Coleman
 #022 Private Line 1508 S. Seneca - Trailer 3-25-54 - J.M. Donald
 #421 - 1508 S. Seneca - 3-25-54 for J.M. Donald
 #25120 - 412-90 - 1532 S Seneca - NB
 Quick TAP - (TAP 2+14.0)
 #C65004 - 3-16-72 - K. Wiland - 1537 S Walnut (top 2+24.6)
 #25120 - 412-90 - 1532 S Seneca - NB
 Quick TAP - (TAP 2+14.0)
 #25120 - 412-90 - 1532 S Seneca - NB
 Quick TAP - (TAP 2+14.0)
 #25120 - 412-90 - 1532 S Seneca - NB
 Quick TAP - (TAP 2+14.0)