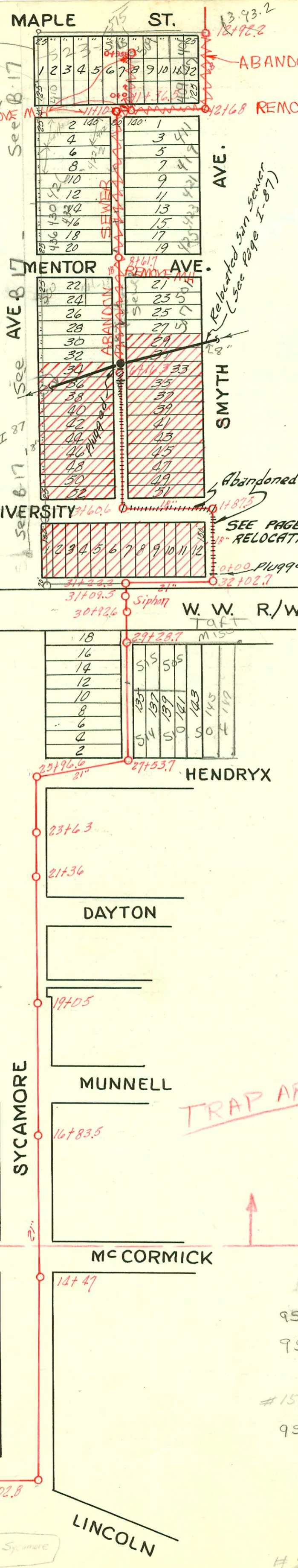


See N-168
Submain
San. Sew. District #21
Relocation



RELOCATION OF A PART OF SUBMAIN, SANITARY
SEWER DISTRICT #21
PROJ. NO. 468-82454 (621037)
BUILT BY DONDLINGER CONST. CO.
BOOKED 7/6/95 FROM AS BUILTS

NOTE:
CROSS-HATCHED AREA
CONDEMNED FOR U.S. 54
HIGHWAY R/W.

See page 142 Bk. # 2

See 6-17 I-87

Relocated San Sewer
(See Page I-87)

Abandoned

SEE PAGE I-87 FOR
RELOCATION.

TRAP AREA

95-542-7 1-17-95 510 (409 S. Smyth) - Hennin 4" clay +36.5
95-540-7 1-17-95 510 (430 S. Sycamore) - Hennin 6" clay Seal off 9+12.7
#15315 Seal off 581 W. Maple - Hodge pat Kelly. 3-18-62 (11 +16.5)
95-2106-7 2-15-95 510 (401 S. Smyth) - Hennin - no sewer found in front yard - may have been conn to 407 S. Smyth

SUB-MAIN, S. S. DIST. #21
W. B. CARTER 1930

94-3775-7 414-416 S Sycamore
% (5+89.7) 20 1/2 ft S of MH 6+16.3
in clay - 6" clay

#2959 & 2960. Inliner 510 Hendryx from McDonald 12-15-54
#3010 & 5011 - Top - 220 S. Dodge (west 1174 2nd) 4-24-53
#5018 - Top - 820 S. Dodge west High School - 4-24-53
Ripoted Turner Co.

CONSTRUCTION RECORD

SERVICE RECORD

STATION	ELEVATION		Depth	MANHOLE	4-INCH "Y" BRANCHES		No. of Permit		House Number		DATE OF PERMITS	
	Ground	Grade			North West	South East	North West	South East	North West	South East	North West	South East
12+0	104.0	95.41	8.59	11+02.8								
13+0	104.50	95.51	9.0									
14+0	104.0	95.61	8.49	14+47								
15+0	103.38	95.71	7.67									
16+0	103.52	95.81	7.71									
17+0	103.56	95.91	7.65	16+83.5								
18+0	103.63	96.01	7.62									
19+0	104.03	96.11	7.92	19+05								
20+0	105.0	96.21	8.79									
21+0	105.17	96.22	8.95	21+36								
22+0	106.01	96.31	9.70									
23+0	107.05	96.41	10.64	23+63								
24+0	107.00	96.51	10.49									
25+0	107.20	96.61	10.59									
26+0	107.62	96.71	10.91	25+96.6								
27+0	108.0	96.81	11.19	27+53.7								
28+0	108.19	96.91	11.28									
				27+97.2								
				28+19.7			#200		638 S. Sycamore		7-16-31	
				28+49.3								
				28+69.3	28+61.3		#200	#2415	636 S. Sycamore		10-26-37	11-13-45
				28+99.7			94-173127 #453		618 Sycamore		10-25-94	
29+0	107.25	97.01	10.24									
				29+22.0								
				29+28.7			#10		616 S. Sycamore		2-15-34	
				29+46.1			#260		612 S. Sycamore		10-31-35	
				29+72								
30+0	106.65	97.11	9.54	30+92.6								
31+0	107.45	97.21	10.24	31+09.5								
				31+22.6								
				31+29.1								
				31+61.6	Conn.							
32+0	108.15	97.90	10.25									
				31+87.2								
				32+15.1	Conn.							
				32+37.6	Conn.							
33+0	106.75	98.00	8.75									
33+02.7	106.75	98.05	8.70	33+02.7								
0+0	106.75	98.15	8.60	0+0								
1+0	107.56	98.25	9.31									
2+0	107.69	98.35	9.34	1+87.5								
3+0	108.19	98.45	9.74	3+60.6								
4+0	109.39	98.55	10.84									
				4+05.1	4+02.1							
				4+35.1	4+32.1	Conn.						
				4+62.3	4+59.3	Conn.						
				4+86.6	4+83.6							
5+0	110.34	98.65	11.69									
				5+08.9	5+05.9	Conn.						
				5+32.5	5+29.5							
				5+57.6	5+54.6	Conn.						
				5+82.2	5+79.2							
6+0	110.84	98.75	12.09									
				6+08.6	6+05.6	Conn.						
				6+16.6	6+13.6		3916		514 S. Sycamore		10-15-42	2-26-57
				6+36.9	6+33.9							
				6+60.8	6+57.8		#2877		597 S. Smythe		2-3-95	
				6+85.4	6+82.4	Conn.	951597					
7+0	111.44	98.85	12.69									
				7+31.6	7+28.6	Conn.	951597		501 S. Smythe		2-3-95	
				7+43.5	7+40.5	Conn.	2.		501 S. Smythe		3-15-95	
				7+77.3	7+74.3	Conn.	9135807		511 S. Maple		10-22-91	
8+0	110.04	98.95	11.09									
				8+69.6	8+66.6	Conn.	959129		425 S. Smythe		2-20-95	
				8+98.1	8+95.1							
				9+27.4	9+24.4	Conn.	951357		425 S. Smythe		2-3-95	
				9+60.5	9+57.5	Conn.	#1980		42 S. Sycamore		8-10-56	
				9+87.7	9+84.7	Conn.	9521787		421 S. Smythe		2-15-95	
10+0	111.44	99.15	12.29									
				10+29.5	10+27.0	Conn.	16077		422 S. Smythe		2-2-86	
				10+56.6	10+54.1	Conn.	9521727		419 S. Smythe		1-22-97	2-15-95
				10+82.7	10+80.2	Conn.	#1360		418 S. Sycamore		1-6-54	
11+0	111.64	99.25	12.39									
				11+10	11+15.5		15315		404 S. Sycamore		9-16-48	1-4-95
				11+36.5	11+38.2				581 W. Maple		3-20-62	
				11+64.2	-							
				11+90.4	11+83.0	90	9521727		411 S. Smythe		2-15-95	11-7-95
12+0	109.97	99.35	10.62				24550					
13+0	108.70	99.45	9.25	12+68								
14+0	108.90	99.55	9.35	13+93.2								
0+0	110.93	104.84	6.09	0+0								
				0+95.8								

6" y

6" y

6" y

#1434 - Tap - 1519 S. Osage - 4-4-39 - Vernon Shellanbeyer (Special Fee #10⁰⁰ paid 4-4-39)
 #317 - Tap - 514 Hendryx - 10-11-41 Geo Magruder
 #746 - Tap - 515 Railroad - 12-8-41 Geo Magruder
 #2949 - Tap - 510 Hendryx - 10-14-59 - Joe Mc Dowally
 #6918 - Tap 420 S. Sycamore - Bradford Dewar 5-8-58 (420-422 S Sycamore)
 95-511-7 14700 - Tap - 432 Sycamore - 9-25-69 - Kennedy Pkg. (9+42.7)
 #15507 - Tap - 515 W. Maple - 4-26-62 - Reynolds Pkg (0+39)
 #43-3785 - 515 W. Maple 12/15/62 w/pe map on 5/6/65
 92-23099-7 8-24-92 SOS w-Toft (Frank)
 (Note see also M-150. Do NOT know which line conn to) "NO MH located clay under out bldg. Conn clay to 4" soil 40 13' E of Wk (rear)
 94-3776-7 412 S Sycamore 5/6 (5+61.3)
 54 ft South of MH in alley - 6' clay