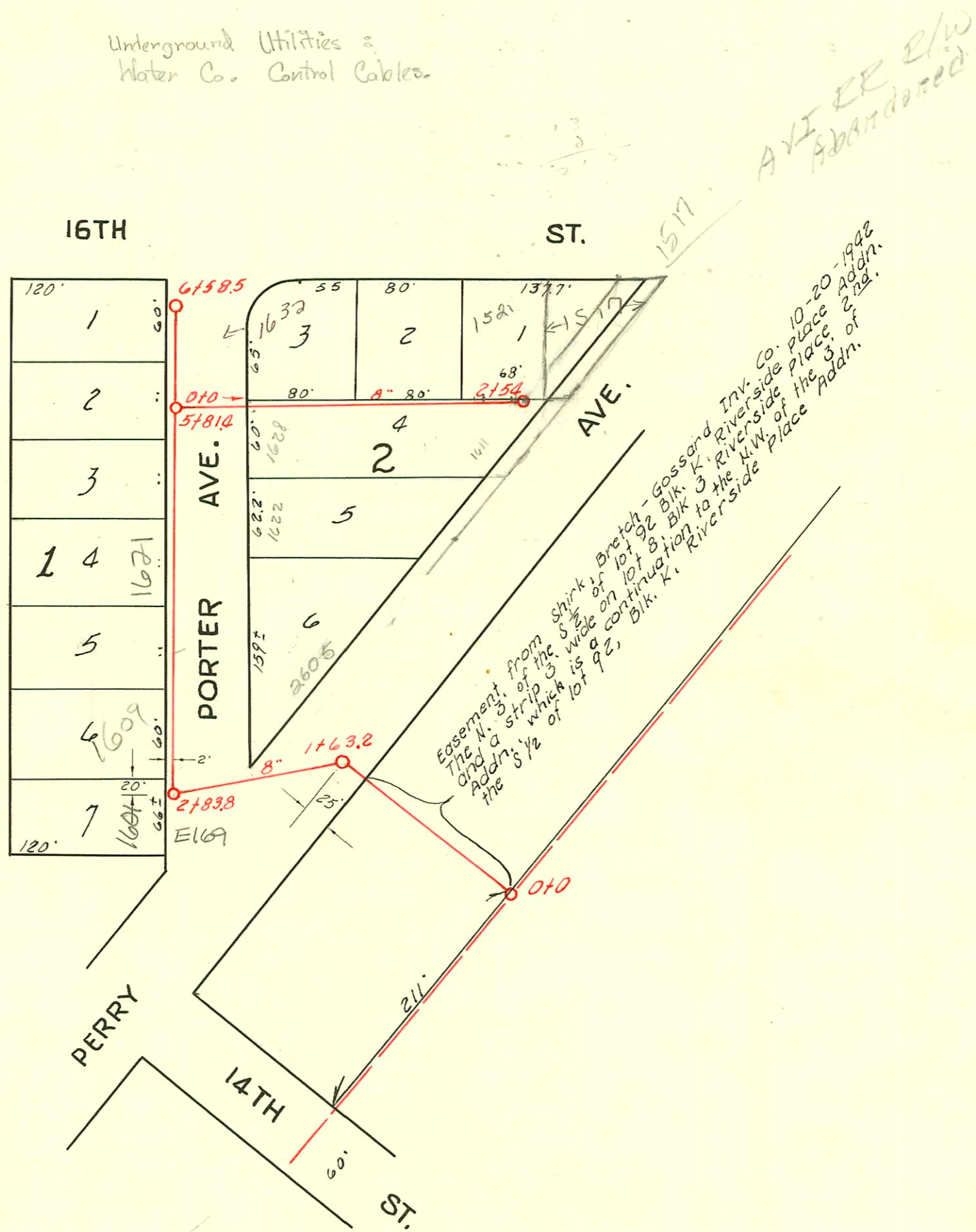


Underground Utilities :
Water Co. Control Cables.



LAT. W, DIST. R, S.S.# 20

W. B. CARTER, 1942

CONSTRUCTION RECORD						SERVICE RECORD						
STATION	ELEVATION		Depth	MANHOLE	4-INCH "Y" BRANCHES		No. of Permit		House Number		DATE OF PERMITS	
	Ground	Grade			North West	South East	North West	South East	North West	South East	North West	South East
0+0	123.80	113.43	10.37	0+0								
1+0	124.00	113.58	10.42									
				1+63.2								
2+0	124.10	113.73	10.37									
				2+83.8	1-4" stub SW.							
3+0	124.60	113.90	10.70		3+12.9	3+09.9						
					3+32.2							
					3+68.0							
					3+95.2	3+92.2	#1817		1617		4-12-42	
4+0	124.20	114.05	10.20		4+29.3		#6		1621		11-11-42	
					4+43.7				Porter			
					4+63.2							
					4+92.6	4+78.0	#5		1627		11-11-42	
5+0	124.50	114.20	10.30		5+08.5	5+20.3			Porter			
					5+50.8		#4		1631		11-11-42	
					5+64.0				Porter			
				5+81.4								
6+0	124.40	114.35	10.05		6+12.3							
					6+21.2		#3		1633		11-11-42	
	124.60	114.42	10.18	6+58.5					Porter			
					North	South						
0+0	125.0	114.37	10.13	0+0								
					0+66.3							
1+0	123.8	114.52	9.13		1+08.9	1+11.9	#9	#8	1632	1628	11-11-42	12-16-48
					1+51.5		#10		Porter	Porter	11-11-42	11-11-42
					1+79.0				1531 w/			
2+0	125.2	114.67	10.53		2+21.7				16th			
					2+46.0		#11		1521 w/		11-11-42	
	124.0	114.76	9.24	2+54.0					16th			

2002-03238 #1983 - Tap - 1609 Porter - 5-7-47 Cherry Plog. Co. 12/2/02 overnight - tied 3' from main, 2 Fernco, 1V22, 1H45
 2000-1147 #1984 - Tap - 1601 Porter - 5-7-47 Cherry Plog. Co. - see pg 169
 #552 - Tap - 1577 w. 16th - 3-1-47 - Cherry Plog. Co. 4" SDR 35 1/2" dia DL tied onto existing 4" clay w/ 5' west of MH + 4 ft off main
 #2076 - Tap - 1606 Perry - 3-22-66 - Joe McDonald