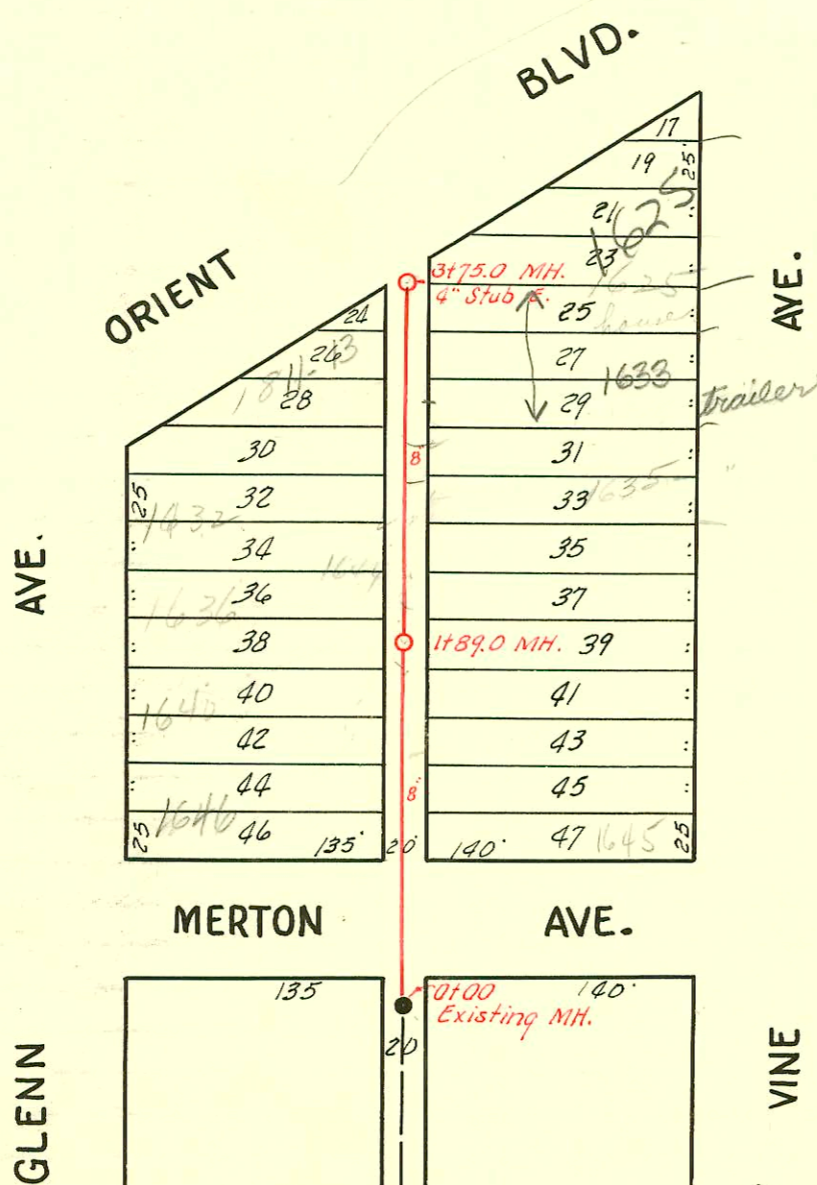


LAT. C, DIST. E, S. S. # 21

W. B. CARTER, 1945



- #15893 top trailer 1635 S. vine del. 7-13-62 (+63)
- #15895 priv. line con. trailer 1635 S. vine " " " "
- #15894 top trailer 1625 S. vine del. 7-13-62 (+91)
- #15896 priv. line con. trailer 1625 S. vine " " " "

LAT. 3, DIST. E, S. S. # 21

W. B. CARTER CONST. CO., SEPT. 5, 1953

BK. NO. JF. 56,

PROJ. NO. C 23-35

5267 - Sep - 1952 - Glenn - Riggs - 9-20-57

CONSTRUCTION RECORD						SERVICE RECORD						
STATION	ELEVATION		Depth	MANHOLE	4-INCH "Y" BRANCHES		No. of Permit		House Number		DATE OF PERMITS	
	Ground	Grade			North West	South East	North West	South East	North West	South East	North West	South East
0+0	106.6	100.28	7.11	0+0	Riser 0+80.6	0+77.6	#2854		1742 Glenn			3-25-46
1+0	107.7	100.38	7.77		1+04.9 1+27.7 1+53.3 1+81.5	4" SCH 40 - CO ONLY 1+01.9 1+24.7 1+52.3 1+78.5	2000-00602 1540 #2383 #3050	1908 R Esthner 1756 S S. Vine 1751 S. Vine			3-13-00 11-17-48 3-22-85 11-3-45	
2+0	108.6	100.48	8.32		2+04.1 Short pipe 2+27.6 2+55.1 2+79.0	2+01.1 2+25.2 2+52.1 4" SCH 40 2+86.7 2+76.0	#6590	1749 S. Vine				9-20-53
3+0	110.8	100.58	10.20		3+03.5 3+25.7 3+34.0 3+51.1 3+78.6	3+00.5 3+31.0 3+48.1 3+75.6 3+64.5	#382 #5312 #64281	1728 S. Glenn 1732 S. Glenn 1729 S. Vine				4-6-50 -14-51 12-2-77
4+0	110.3	100.68	10.38		4+06.2 4+31.4 4+59.2 4+83.4	4+03.2 4+28.4 4+56.2 4+80.4	#924185-7 714 #113	1728 S Glenn	1711 S Vine			11-12-92 7-12-49 12-16-46
5+0	108.9	100.78	8.28		5+06.3 5+33.3 5+60.5 5+84.9	5+03.3 5+30.3 5+57.5 5+81.9	#6104 #1129 #4912	1728 S Glenn 1712 Glenn	1711 S. Vine 1707 S. Vine			10-12-51 3-1-48 6-9-54 6-7-51
6+0	108.0	100.88	7.70		6+09.5 6+33.3 6+49.4	6+06.5 6+30.3 6+46.4	#1640 #150 #780 #4131	1704 S. Glenn 1701 S. Glenn	1703 S. Vine 1701 S. Vine (rear)			5-12-51 2-23-46 9-23-49 3-23-51
6+53.8	108.1	100.94	7.92	6+53.8								
						West	East					
0+0	107.9	101.07	6.8	0+00 Exist'g M.H.	0+94.0	0+91.0	#7021 6846 639	1626 S. Glenn 1645 S. Vine	1645 S. Vine 1641 S. Vine			11-18-53 10-31-53 4-14-54
1+0	108.1	101.17	6.9		1+36.0 +63.0 +80.0	1+39.0	#7031 B4760	1654 S. Glenn 1640 S. Glenn				11-20-53 12-14-65
	108.0	101.26	6.7	1+89.0	1+99.0		#7030 B5493	1650 S. Glenn 1636 S. Glenn				11-20-53 4-22-66
2+0	107.9	101.27	6.6		2+02.0	2+08.0	#7029 #2373	1638 S. Glenn	1631 S. Vine			11-20-53 10-24-66
					2+47.0	2+44.0	Leaf #1566	1635 S. Vine	1635 S. Vine			9-23-55
					2+95.0	+71.0	#15892	1635 S. Vine	1635 S. Vine			7-13-62
3+0	106.3	101.37	4.9		3+30 3+28.0	4" SCH 40 3+20	2000- 01041 #53461	1811-18 West dld.	1635 S. Vine			See Below 1-28-76 4-27-00
	105.8	101.45	4.4	3+75.0	Sld T.E of M.H (4" Stub E.)	3+28.0	22301 6107	1635 S. Vine	1635 S. Vine			10-24-53

Ref
SWP 2000-01041 4/21/60 1633 S Vine - Clearwater FTL 4" SCH 40, 4" Trap, connect to exist 6"
Clay tile line 35' S of NPL +15.5' from main - No alley cut, 1H22

#4038 - Tap - 1746 S. Glenn - 3-6-51 - Kendall Pkg. Co
Tap #6597 - Trailer - 1756 S. Glenn - 11-26-51 Joe McDonald
Private Line - #6598 - Trailer - 1756 S. Glenn - 11-26-51 Joe McDonald
Tap #1630 - 4716 S. Glenn - 6-13-52 - E.H. Headgorth
#5976 - Tap - 1633 S. Glenn - Headgorth pkg. 8-11-55
13437 1749 S. Vine - Trailer - Byrrolde 10-10-60