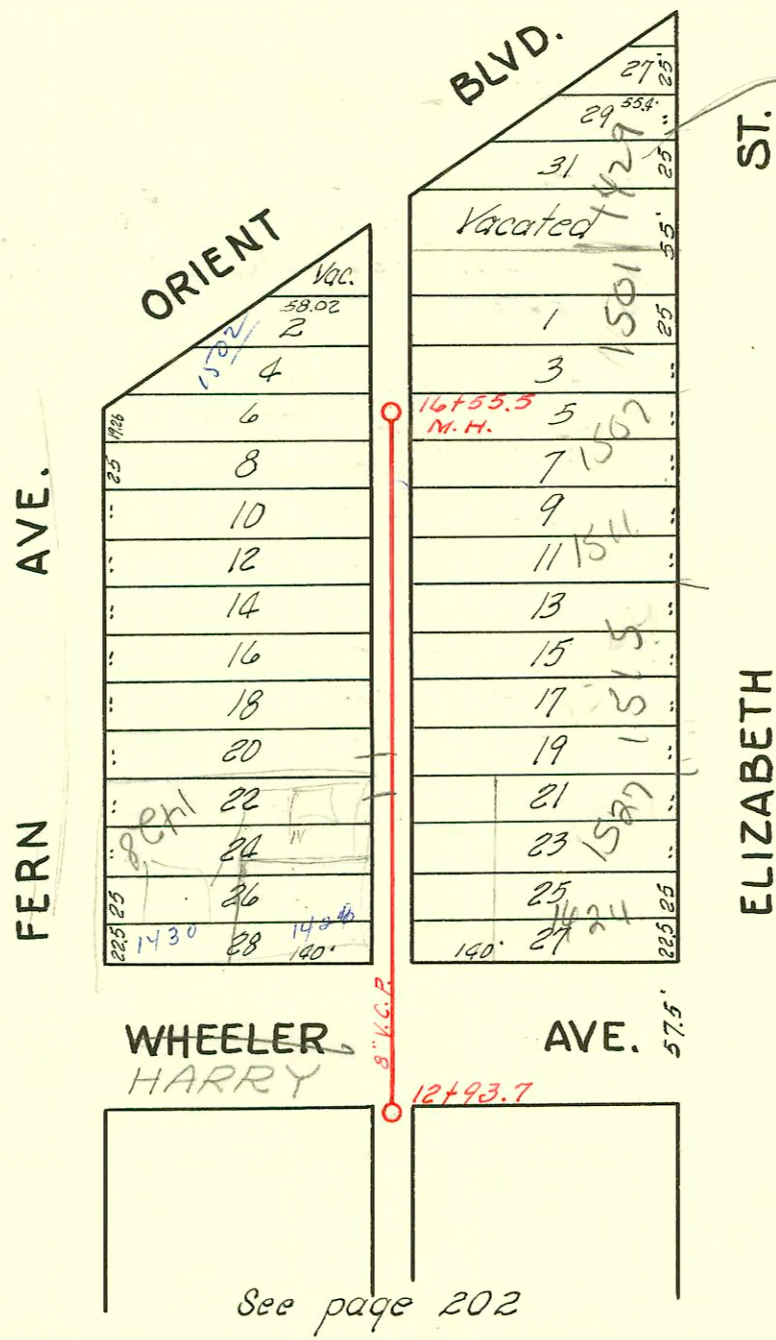


1429 S. Elizabeth  
Refer to Book  
B-68 for  
connection info  
Tapped to 30" main  
in Elizabeth  
1/5/09  
BE



LAT. F, DIST. E, S. S. # 21  
W. B. CARTER 1946

CONSTRUCTION RECORD						SERVICE RECORD						
STATION	ELEVATION		Depth	MANHOLE	4-INCH "Y" BRANCHES		No. of Permit		House Number		DATE OF PERMITS	
	Ground	Grade			North West	South East	North West	South East	North West	South East	North West	South East
13+0	See Page 202											
14+0	105.4	99.00	7.01		13+85.3	13+82.3						
					14+10.0	14+07.0						
					14+34.5	14+31.5						
					14+58.0	14+55.5						
15+0	105.5	99.1	7.00		14+81.8	14+79.3						
					15+05.7	15+03.2						
					15+27.7	15+25.2						
					15+52.3	15+49.8						
					15+74.9	15+72.4						
					15+97.4	15+94.9						
16+0	105.4	99.2	6.56		16+27.4	16+24.9						
					16+50.4	16+47.9						
16+55.5	106.0	99.27	7.03	16+55.5	16+55.5	16+55.5						

2003-02862 - 11/3/03 - 1426 W Harry - Integrity Plog - 4" SCH 40 - 4" wye repair 131.3' N of MH 12+93.7 (14+28.6)  
 Replaced entire line - 1/4" fall, shallow, 4" twin co @ house, 1H45, 1H22, dirt alley cut

2003-02636 - 10/13/03 - 1428 1/2 W Harry - City-Wide Plog - 4" SCH 40, wye apx 144.5' N of MH 12+93.7 (14+28.6)  
 Replaced all but last (lower) 4' 1/4", shallow, 4" clo at house, 3H45

2000-00295 - 2/3/00 - 1511 Elizabeth, 4" SCH 40 - Tied back to wye - 1H22 - Repl 10' Non low end - dirt alley cut Al Henning

073352-1507 S. Elizabeth - 8-1-79 - Bratcher (16+47.9)

- #5773 - Top into M.H. 16+55.5 - 1501 S. Elizabeth - 7-14-53 Simmons Plog. Co
- #5032 - Top 1502 S. Fern - 10-30-52 - Harry Mann - K & Campbell 12-31-91 4" SDK 35.
- #4583 - Top Trailer - 1512 S. Fern 3-24-53 - Art Prosser
- #4584 - Top Trailer - 1512 S. Fern 3-24-53 Art Prosser
- #4080 - top - 1512 S. Fern - 4-7-55 - Hook to Jay Dr.

CONSTRUCTION RECORD						SERVICE RECORD						
STATION	ELEVATION		Depth	MANHOLE	4-INCH "Y" BRANCHES		No. of Permit		House Number		DATE OF PERMITS	
	Ground	Grade			West	East	North West	South East	North West	South East	North West	South East
0+0	104.6	97.40	8.07	old M.H. 0+00	0+63.0	0+60.0	#2260		1750 S.	1502-64-66 S.	2-22-49	
					0+87.0	0+84.0	#3255	#19830	S. Fern	Elizabeth	2-19-51	6-25-70
1+0	104.8	97.50	8.18		1+11.3	1+80.3		#22419	1752 S.	1745-47 S.	See next pg	6-19-79
					1+35.0	1+32.0	#154	#6440	Fern	Elizabeth	3-20-50	2-12-52 11-13-51
					1+60.1	1+57.1						
					1+87.7	1+84.7						
2+0	104.6	97.60	7.75		2+12.4	2+09.4	#49410	#3256	1744 S.	1741 S.	5-8-75	9-18-74 2-19-51
					2+36.7	2+33.7	#3171	#5622	Fern	Elizabeth	1-24-51	
					2+59.9	2+56.9						8-17-51
					2+85.0	2+82.0						
3+0	104.9	97.70	7.68		3+15.2	3+12.2	#3115	#2653	1732 S.	1735 S.	3-23-74	
				3+18.7	3+38.0	3+35.0	#248		1730 S.		6-23-48	
					3+60.5	3+57.5						8-1-50 3-2-51
					3+84.5	3+81.5						
4+0	105.3	97.80	7.74		4+12.3	4+09.3		#249411	1722 S.	1717 S.		5-8-75
					4+36.2	4+33.2	#3896		Fern		2-23-51	
					4+60.8	4+57.8	#2397		1713 S.		9-15-50	
					4+79.3	4+76.3		#2519		1715 S.		9-28-50
5+0	104.5	97.90	6.99		5+10.0	5+07.0	#890		1712 S.		5-25-56	
					5+33.7	5+30.7	#2569		1706 S.	1711 S.	7-19-71	
					5+58.6	5+55.6	#2370	#3360	Fern	Elizabeth	7-15-50	2-20-50
					5+81.0	5+78.0	468		1706 S.		6-6-80	
6+0	105.0	98.00	6.89		6+09.5	6+06.5	#23087	#2225	1702 S.	1701 S.	3-2-71	
					6+35.0	6+32.0	2245W		1551 S.		5-21-71	8-19-53
7+0	104.9	98.10	6.84		7+09.7	7+06.7	#2624	#1765	1658 S.	1659 S.	8-3-72	1-22-71
					7+35.7	7+32.7	#2256	#5061	Fern	Elizabeth	8-21-52	6-21-51
					7+68.4	7+65.4		#716		1643 S.		6-30-49
					7+92.0	7+89.0						
8+0	105.0	98.20	7.26		8+05.4	8+16.4	#2608		1650 S.		7-1-82	
					8+19.4	8+16.4	#3118		1648 S.		5-10-83	
					8+43.0	8+40.0	#2255		1648 S.		8-21-52	
					8+68.0	8+65.0					7-1-83	
					8+92.8	8+89.8				1633 S.		8-8-50
9+0	105.5	98.30	7.73		9+19.7	9+16.7						
				9+48.2	9+42.9	9+39.9	#215		1634 S.		6-22-47	
					9+67.7	9+64.7						
					9+90.3	9+87.8		#4262		1631 S.		3-7-51
10+0	105.2	98.40	7.32		10+13.6	10+11.1	#2429		1624 S.		5-9-50	
					10+39.6	10+37.1	#920		Fern	Elizabeth	10-5-65	12-13-50
					10+66.2	10+63.7		#3377		1622 S.		11-26-51
					10+89.2	10+86.7	#6601		Fern			
11+0	104.8	98.50	6.78		11+16.3	11+13.8						
					11+42.5	11+40.0	#357		1616 S.		3-16-54	
					11+65.0	11+62.0	#30605	#6943	Fern	Elizabeth	2-24-72	12-28-51
					11+89.2	11+86.2		#477		1607 S.		8-31-49
12+0	104.9	98.60	6.84		12+23.2	12+20.2	#6717		1608 S.		10-17-55	
					12+47.5	12+44.5						
					12+72.0	12+69.0						
					12+90.0	12+87.0						
13+0	105.5	98.70	7.26		12+93.7							

See page 203

C72419-1745-47 S. Elizabeth - 6-19-79 New Conn.  
 #14626-top - 1601 S. Elizabeth - Henry Macguffee - 7-1-61 (12+32.7)  
 B1146-top - 1607 S. Elizabeth - Ruth Willard - 4-24-64 (12+00.7)  
 B4280-top - 1624 S. Fern - Al Henning - 10-5-65 (10+60.2)  
 C69551 - New Conn - 1658 S. Fern - George - 11-27-78