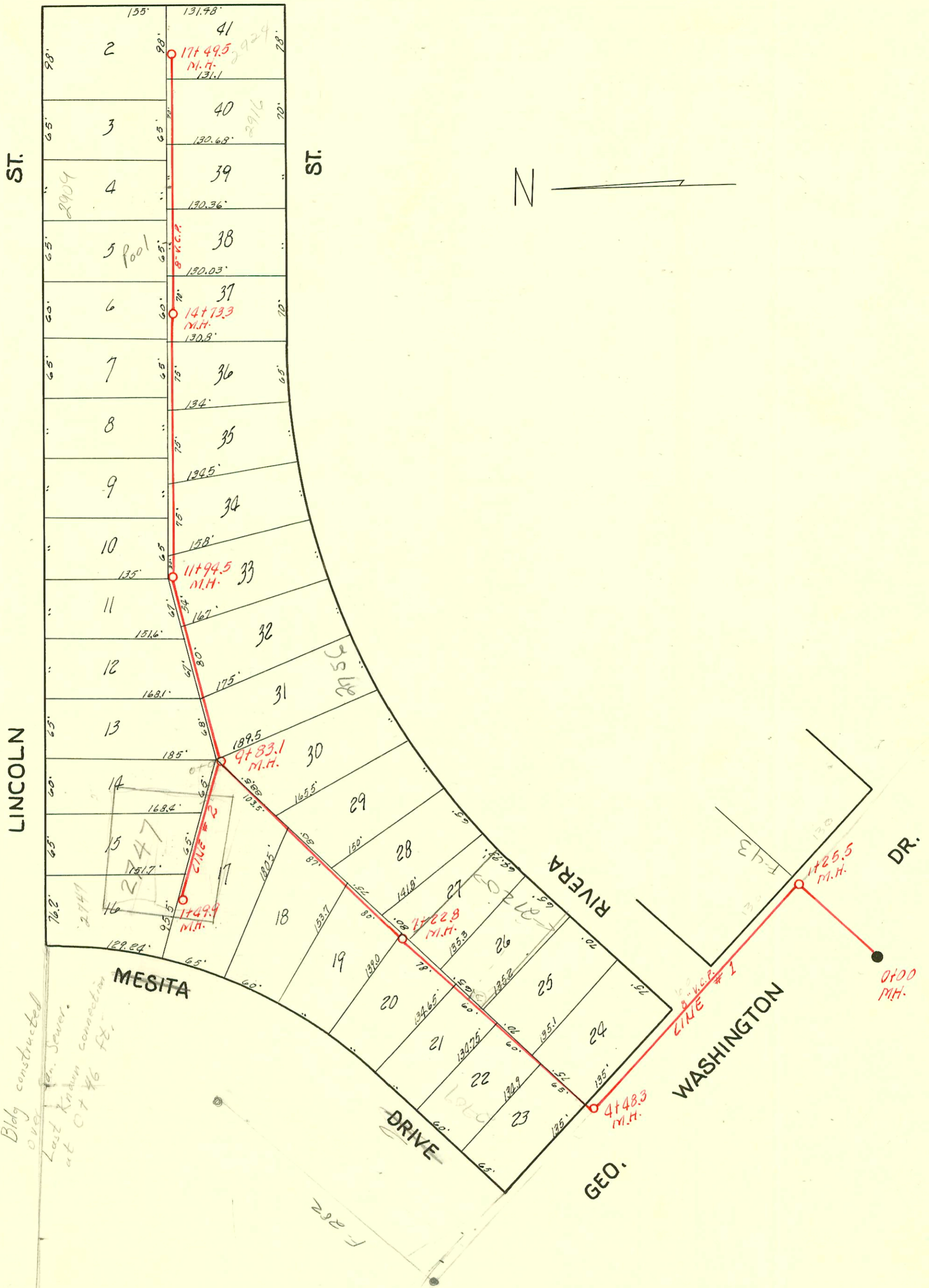


CHAUTAQUA AVE.



Bldg constructed over
over San. Sewer.
Last known connection
at 07 46 ft.

DIST. 10, S. S. # 12
W. B. CARTER 1946

CONSTRUCTION RECORD

SERVICE RECORD

STATION	ELEVATION		Depth	MANHOLE	4-INCH "Y" BRANCHES		No. of Permit		House Number		DATE OF PERMITS	
	Ground	Grade			North	South	North West	South East	North West	South East	North West	South East
0+0	103.7	96.30	7.79	0+00 Old M.H.								
1+0	103.2	96.40	7.06	1+25.5								
2+0	103.5	96.60	7.24									
3+0	103.9	96.70	7.53									
4+0	103.8	96.80	7.33									
				4+48.3								
5+0	103.6	97.00	7.20		4+85.3	4+91.2	#1201		2704 Rivera		11-26-47	
6+0	103.9	97.10	7.22		5+48.0	5+59.9	#1001		2714 Rivera		10-24-47	
7+0	103.8	97.20	7.01		6+05.4 6+57.3	6+28.9	#1000		2720 Rivera		10-24-47	
				7+22.8		7+03.8						
8+0	103.8	97.30	6.93		7+58.0	7+76.3	#999		2728 Rivera		10-24-47	
9+0	103.8	97.40	6.93		8+48.6	8+65.6	#998		2738 Rivera		10-24-47	
				9+83.1		9+23.1	9+37.8	#997	2748 Rivera		10-24-47	
10+0	103.9	97.50	6.75		10+47.4 91.0	10+08.5 68.2	#1256 #1257	#357 #358	2709 E. Lincoln 2715 E. Lincoln	2756 R Rivera 2764 Rivera	See Below 1-14-47 1-14-47	10-14-99 7-9-47 7-9-47
11+0	103.9	97.60	6.83		11+79.8	11+34.5	#1258		2721 E. Lincoln		1-14-47	
				11+94.5								
12+0	103.9	97.70	6.69		12+19.8 92.0	12+49.4	#1370 #1371	#134	2803 E. Lincoln 2804 E. Lincoln	2812 Rivera	2-3-47 2-3-47	6-4-47
13+0		97.80	8.06		13+53.4	13+24.1 +94.5	#1318	#1370 #1869	2815 E. Lincoln	2818 Rivera 2822 Rivera	1-17-47	4-23-47 4-23-47
14+0	104.2	97.90	6.74		14+17.3	14+66.1	#1219	#1725	2821 E. Lincoln	2830 Rivera 4-3-47	1-7-47	
				14+73.3								
15+0	104.1	98.00	6.62		15+50.2	15+39.3 +96.8	#1222	#1724 #1091	2903 E. Lincoln	2904 Rivera 4-3-47 2910 Rivera	6-19-81 1-7-47	11-12-47
16+0	104.1	98.10	6.44		16+06.8 96.5	16+68.6	#1220	#1092	2904 E. Lincoln 2915 E. Lincoln	2916 Rivera	1-7-47 2-13-47 1-7-47	11-12-47
17+0	104.1	98.20	6.45		17+17.8	17+20.8	#1219	#1172	2921 E Lincoln	2924 R Rivera	1-7-47	9-27-95 11-22-47
				17+49.5								
17+50	104.0	98.25	6.16									
0+0	103.9	97.59	6.33	0+0	0+30.9 78.7		#231		2753 E. Lincoln		5-24-47	
1+0	103.7	97.69	6.61		1+36.9							
				1+49.9								

LINE 1

LINE 2

1997-00909-10/14/99-2756 E Rivera - Wichita Exc - 4" Sch 40 Tied 12" from main, 25' E of MH 9+83.1 (10+08.1) ITWIN CO, 1V22, 1H22

#C 30075 - 2747 Boulevard Royal - Mr. De - 1-19-72 (0+46) Top
 #359 - Top - 2804 Rivera - 7-9-47 Frederick Plog. Co.
 #851 - Top - 2837 E. Lincoln 10-2-47 Frederick Plog. Co.
 #2914 - Top - 2709 Mesita - 10-31-50 - Frederick Plog. Co.