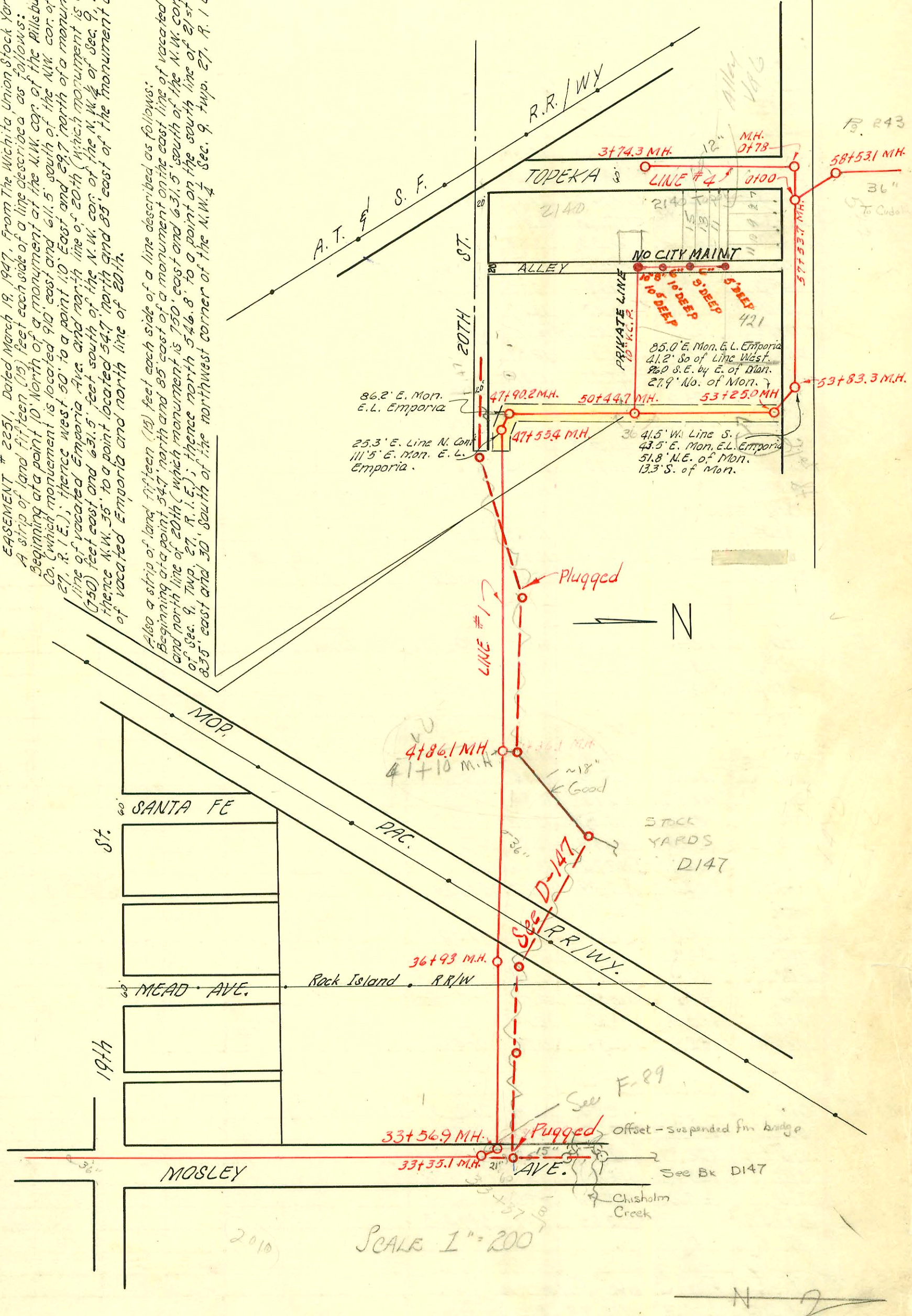


EASEMENT # 2251, Dated March 19, 1947, From The Wichita Union Stock Yards Co.
 A strip of land fifteen (15) feet each side of a line described as follows:
 Beginning at a point 10' North of a monument at the NW cor. of the Hillsbury Flour Mills Co. (which monument is located 90' east and 611.5' south of the NW cor. of the N.W. 1/4 Sec. 9, Twp. 27, R. 1 E.); thence west 50' to a point 10' East and 29.7' north of a monument at the east line of vacated Emporia Ave. and north line of 20th (which monument is seven hundred fifty (750) feet east and 631.5' feet south of the N.W. cor. of the N.W. 1/4 of Sec. 9, Twp. 27, R. 1 E.); thence N.W. 3/4 to a point located 54.7' north and 85' east of the monument at the east line of vacated Emporia and north line of 20th.

Also a strip of land fifteen (15) feet each side of a line described as follows:
 Beginning at a point 54.7' north and 85' east of a monument on the east line of vacated Emporia and north line of 20th (which monument is 750' east and 631.5' south of the N.W. cor. of the N.W. 1/4 of Sec. 9, Twp. 27, R. 1 E.); thence north 546.8' to a point on the south line of 21st St., which point is 835' east and 30' South of the northwest corner of the N.W. 1/4 Sec. 9, Twp. 27, R. 1 E.



RECON PORTION SSN#20
 BUILT BY: MID STATES CONST. CO.
 PROJ. NB 468-76-245-80496-000-000-001
 BOOKED 2-29-80 FROM MRT 1

RECONSTRUCTION S. S. NO. 20
 W. B. CARTER 1948

47636-21402 Snyder - 3-9-83 - Jim Conall (MH tap into 2nd MH S. of 21st on private 7' deep alley E. of Topeka)

SCALE 1" = 200'

*B. M. 118.03 "B" in Blake N.S. Wk. W. N.W. Cor. Mosley & 15th.

CONSTRUCTION RECORD						SERVICE RECORD						
STATION	ELEVATION		Depth	MANHOLE	4-INCH "Y" BRANCHES		No. of Permit		House Number		DATE OF PERMITS	
	Ground	Grade			North West	South East	North West	South East	North West	South East	North West	South East
0+0	117.6	105.70	12.45	0+0 M.H.								
0+56.2	117.7	105.74	13.18	0+56.2								
1+0	118.1	105.78	12.92									
2+0	118.2	105.86	13.34									
3+0	118.3	105.94	12.84									
4+0	117.9	106.02	12.75									
5+0	118.1	106.10	12.29									
6+0	118.2	106.18	12.76	6+97.3								
7+0	118.7	106.26	12.74									
8+0	118.6	106.34	12.67									
9+0	118.6	106.42	12.68									
10+0	118.6	106.50	12.17									
11+0	118.8	106.58	12.80									
12+0	118.9	106.66	12.73									
13+0	118.8	106.74	12.66									
13+16.0	118.8	106.74 ⁱⁿ 12.51	12.56	13+16.0								
13+74.3	118.9	106.79 ⁱⁿ 11.80	11.76	13+74.3								
14+0	119.2	106.82	12.70									
15+0	118.8	106.90	12.25									
16+0	118.7	106.98	11.91									
17+0	118.5	107.06	12.03									
18+0	119.2	107.14	12.83									
19+0	118.7	107.22	12.15									
20+0	118.8	107.30	11.39	20+29.1								
21+0	119.2	107.38	11.15									
22+0	119.2	107.46	11.77									
23+0	119.3	107.54	11.76									
24+0	119.0	107.62	11.77									
25+0	119.4	107.70	11.44									
26+0	119.5	107.78	12.27	26+90.1								
27+0	119.6	107.86	12.28									
28+0	119.8	107.94	12.66									
29+0	120.3	108.02	12.93									
30+0	120.9	108.10	13.32									
31+0	121.4	108.18	13.94									
32+0	121.6	108.26	13.87									
33+0	121.6	108.34	13.51									
33+35-1		108.36 ^{out} 13.48	13.28	33+35.1	90 N.W.		4-20-2		20412 Mosley		4-27-80	
33+56.9		108.38 ⁱⁿ 13.62	13.80	33+56.9	90 W.		1-15-31				11-15-79	
34+0	122.0	108.42	14.01									
35+0	121.6	108.50	13.58									
36+0	121.6	108.58	13.54									
36+93.0	122.0	108.64 ^{out} 13.43	13.44	36+93.0								
37+0	121.1	108.66	12.93									
38+0	121.7	108.74	13.40									
39+0	122.9	108.82	14.45									
40+0	121.0	108.90	12.44									
41+0	123.2	108.98	14.65									
41+36.1	123.9	109.00 ⁱⁿ 14.53	12.89	41+36.1								
42+0	122.9	109.06	15.18									
43+0	122.9	109.14	13.92									
44+0	122.4	109.22	13.52									
45+0	121.9	109.30	13.13									
46+0	122.4	109.38	13.53									
47+0	122.7	109.46	13.44									
47+55.4	122.3	109.50 ^{out} 13.31	13.33	47+55.4	90 N.W.							
47+90.2	122.3	109.52 ⁱⁿ 13.44	13.59	47+90.2	90 N.							
48+0	122.2	109.54	13.18									
49+0	122.2	109.62	13.18									
50+0	122.3	109.70	13.08									
50+44.7		109.73	13.02	50+44.7								
51+0	122.3	109.78	13.06									
52+0	122.6	109.86	13.20									
53+0	122.1	109.94	12.69									
53+25.0		109.95	12.61	53+25.0	90 N.W.		MM TAP		66107		515 E. 21st	10-11-78
53+83.3	122.6	110.00	12.28	53+83.3	90 W.							
54+0	122.5	110.02	12.21									
55+0	122.5	110.10	12.17									
56+0	122.8	110.18	12.35									
57+0	123.1	110.26	12.52									
57+53.7		110.28	12.82	57+53.7								

8720 - Top - 255 N. Mosley - 7-1-50 Vaughn Hvy. Co. (#20) Special fee paid 11-1-50
 in Mosley Ave. 95-9893-7 63095 481 E 21st - 4" PVC 40' O.L. Rep. appx 6' of pipe at upper end installed C.O.
 # 67087 - Top in Mosley Ave. sewer - 2041 N. Mosley - 12-26-51 - Davidson Hvy. Co. (#20) Special fee paid 12-26-51
 # 2752 - Top in 408 E. 21st - 1-21-52 Richard Co. Coy.
 # 5337 - 415 E 21st 6-27-55 - Proj. BWS.
 # 44778 - 20th & The Empress (Reliance Mills) - 5-7-74 Wilfred Brade