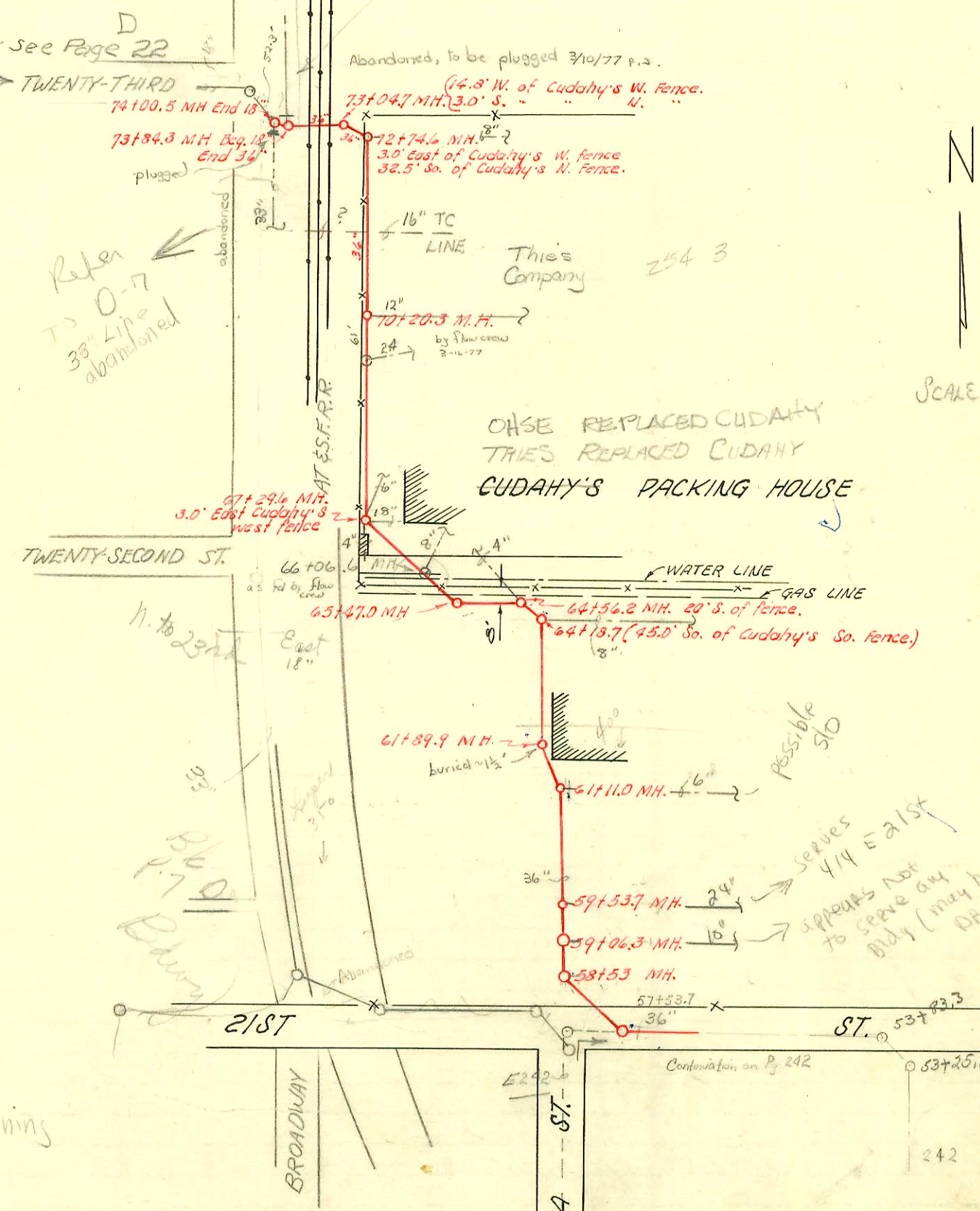


SS EXT TO RALSTON PURINA INC.
 BUILT BY: UTILITY CONTR. INC.
 PROJ. N^o 468-76-245-80518-000-000-008
 BOOKED 7-5-78 FROM 1H63
 on map

streams no longer attached to S.S. 3/29/88

Refer to O-7 33" Line abandoned



#19363-4/1/91 320 E. 21st Henning

RECONSTRUCTION S. S. NO. 20

W. B. CARTER CONST. CO. 1947

SCALE APPROX 1"=200'

CONSTRUCTION RECORD

SERVICE RECORD

STATION	ELEVATION		Depth	MANHOLE	4-INCH "Y" BRANCHES		No. of Permit		House Number		DATE OF PERMITS	
	Ground	Grade			North West	South East	North West	South East	North West	South East	North West	South East
58+0	124.9	110.34	14.87									
58+53.1	124.0	110.37	13.57	58+53.1								
59+0	124.2	110.43	13.80									
59+06.3				59+06.3								
59+53.7				59+53.7								
60+0	124.0	110.53	13.30									
61+0												
61+11.0	124.4	110.63	14.33	61+11.0								
61+89.9	123.3	110.71	13.25	61+89.9								
62+0	123.4	110.73	12.96									
63+0	123.5	110.83	13.09									
64+0	123.6	110.93	13.14									
64+18.7	123.6	110.94	13.41	64+18.7	90 N.W.							
64+56.2	123.7	110.98	13.39	64+56.2	90 W.							
65+0	123.6	111.03	13.53									
65+47.0	123.7	111.06	13.42	65+47.0	90 NW.							
66+0	123.8	111.13	12.77									
67+0	124.1	111.23	13.57									
67+29.6	123.7	111.25	12.64	67+29.6	90 N.							
68+0	123.4	111.33	12.38									
69+0	123.1	111.43	11.81									
70+0	123.0	111.53	12.03									
70+20.3				70+20.3								
71+0	122.1	111.63	11.50									
72+0	122.3	111.73	10.32									
72+74.6		111.79	10.65	72+74.6	90 NW.		675238		2340 N. Broadway		11-7-77	
73+0												
73+04.7		111.83	13.49	73+04.7	90 W.							
73+84.3	123.8	111.92	11.93	73+84.3	End 36" Beg. 18"							
74+00.5				74+00.5	End 18"							
Line II												
0+0	118.6	107.98	10.67	0+0 (13+74.3 Line I)								
1+0	118.5	108.18	11.39									
1+97.7	118.0			1+97.7								
Line III												
0+0		109.70	12.88									
1+0	122.5	109.90	12.88									
2+0	122.9	110.10	12.84									
3+0	123.2	110.30	12.82									
4+0	123.6	110.50	12.93									
5+0	124.1	110.70	13.16									
5+93.4	124.6	110.89	13.77	5+93.4								
6+0	124.6	110.90	13.75									
6+80.1	124.6	111.06	13.77	6+80.1								
7+0	124.5	111.10	13.64									
8+0	124.0	111.30	12.98									
9+0	123.5	111.50	12.10									
10+0	123.3	111.70	12.14									
10+47.0	122.9	111.79	11.73	10+47.0								
Line IV												
0+0		112.94	10.09	0+0 (57+53.7 Line I)								
0+78.0	123.3	113.10	10.10	0+78								
1+0	122.9	113.14	10.02									
2+0	123.4	113.34	9.61									
3+0	123.2	113.54	9.25									
3+74.3		113.69	8.99	3+74.3								
S.S. EXT. TO Ralston Purina Inc.												
0+00	124.7	116.73	8.0	Existing								
	124.4	116.95	7.5	0+53.5	6" STUB N		669504		4142.74		11-22-78	
97-19564-7 11-5-97 2300 N Broadway - tap to penciled MH approx 60'												
NW of MH (65+47) for odor control unit for sewage treat DW												
ok'd per Jim Rush - (Sch 40 PVC - MH tap - trap)												
C75092-2340 N Broadway-10-30-79-Repairs ()												
C 66238-441 E. 11th - 5-4-78 - Insulation (14 28.1)												
C 15917-126 N. Lybka - 4-14-76 (2493.5 1st)												
3622 Top Cady Packing Davidson 1-29-57												
#64919-400 E. 21st - W.B. Carter Bldg. - 1-11-66 (m. H. tap 61+89.9)												
Rev. #81779 - \$500 spec. for job - 400 E. 21st - W.B. Carter Bldg												
#25736-7/13/90 - 2300 N Broadway Hennings - 4" cast iron s/w inside MH - 5x stub. this is same MH used for other Bldg.												
#25746-7/17/90 - 2300 N Broadway (vacant office Bldg) - Hennings - 6" clay tile line s/w in MH - 12x stub												
#25765-7/9/90 - 2300 N Broadway Hennings - 4" cast iron line s/w 15' s. of SW corner of Bldg.												

Line I

Line II

Line III

Line IV