

#1
 #20 Apparently all records of section up to Stafford
 lost by reconstruction records of 1938

60" bricked up 1964

BLAKE

See F.72 Supplemental
 Composite Layout

TRAP AREA

Junction MH. Sta. 62+95.2

60"

$R = 587.96'$
 $D = 9^\circ 45'$
 $\Delta = 157^\circ 58'$

Sta. 60+73 R.C. 2

Sta. 57+39.5

36" line

56+87

PAWNEE AVE.

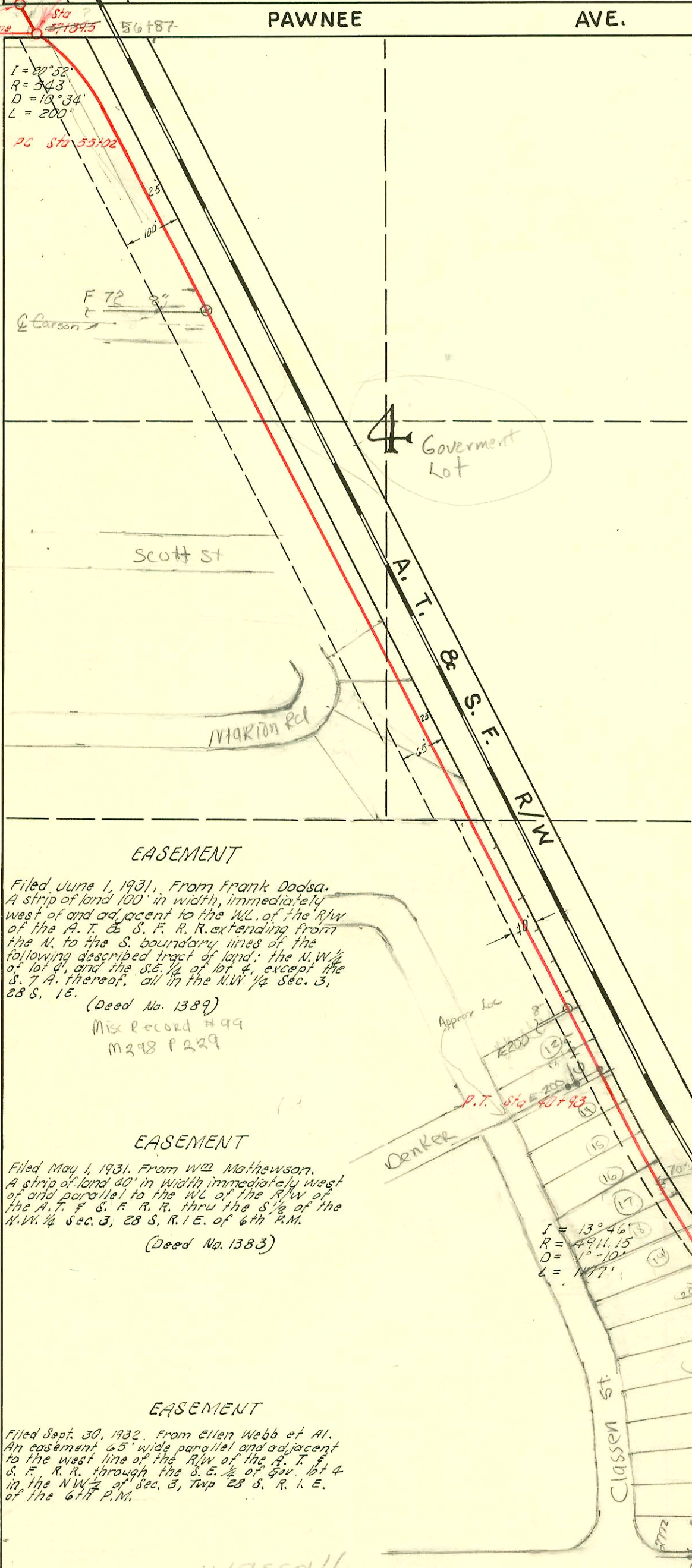
22.5' S. of E. of Pawnee Ave

$I = 20^\circ 52'$
 $R = 543'$
 $D = 13^\circ 34'$
 $L = 200'$

PC Sta. 55+02

AVE.

HYDRAULIC



EASEMENT
 From Wm Mathewson Filed Oct. 1, 1888
 Book 118 Page 504 Reg. of Deeds.
 The S.W. 1/4 Sec. 3, Twp. 28 S. R. 1 E. & S. 1/2
 of N.W. 1/4 Sec. 3, Twp. 28 S. R. 1 E. lot 2
 Sec 10-28-1E.
 for old 36' line

EASEMENT
 Filed June 1, 1931, From Frank Dodsa.
 A strip of land 100' in width, immediately
 west of and adjacent to the W.L. of the R/W
 of the A. T. & S. F. R. R. extending from
 the N. to the S. boundary lines of the
 following described tract of land: the N.W. 1/4
 of lot 4, and the S.E. 1/4 of lot 4, except the
 S. 7' A. thereof, all in the N.W. 1/4 Sec. 3,
 28 S. 1E.
 (Deed No. 1389)
 Mix Record #99
 M298 P229

EASEMENT
 Filed May 1, 1931. From Wm Mathewson.
 A strip of land 40' in width immediately
 west of and parallel to the W.L. of the R/W
 of the A. T. & S. F. R. R. thru the S. 1/2 of the
 N.W. 1/4 Sec. 3, 28 S. R. 1 E. of 6th P.M.
 (Deed No. 1383)

EASEMENT
 Filed Sept. 30, 1932. From Ellen Webb et Al.
 An easement 65' wide parallel and adjacent
 to the west line of the R/W of the A. T. &
 S. F. R. R. through the S.E. 1/2 of Gov. lot 4
 in the N.W. 1/4 of Sec. 3, Twp. 28 S. R. 1 E.
 of the 6th P.M.

$I = 13^\circ 46'$
 $R = 4911.15'$
 $D = 1^\circ 10'$
 $L = 1177'$

PC Sta. 29+93

60" INTERCEPT SEWER TO SEWAGE DISPOSAL PLANT
 SWORDS - McDOUGAL - LANCASTER
 SEPT. 1931

SS #22

E 245

CONSTRUCTION RECORD						SERVICE RECORD						
STATION	ELEVATION		Depth	MANHOLE	4-INCH "Y" BRANCHES		No. of Permit		House Number		DATE OF PERMITS	
	Ground	Grade			North West	South East	North West	South East	North West	South East	North West	South East
29+0	95.21	80.95	14.26									
30+0	94.90	81.0	13.90									
31+0	94.87	81.05	13.82									
32+0	95.26	81.10	14.16									
33+0	95.08	81.15	13.93									
34+0	94.72	81.20	13.52									
35+0	94.77	81.25	13.52									
36+0	94.81	81.30	13.51									
37+0	95.10	81.35	13.75									
38+0	94.64	81.40	13.24									
39+0	96.10	81.45	14.65									
40+0	96.20	81.50	14.70									
41+0	95.81	81.55	14.26									
42+0	95.25	81.60	13.65									
43+0	96.13	81.65	14.48									
44+0	96.66	81.70	14.96									
45+0	96.34	81.75	14.59									
46+0	96.78	81.80	14.98									
47+0	97.0	81.85	15.15									
48+0	96.80	81.90	14.90									
49+0	96.95	81.95	15.0									
50+0	97.41	82.00	15.41									
51+0	97.61	82.05	15.56									
52+0	98.33	82.10	16.23									
53+0	98.41	82.15	16.26									
54+0	98.08	82.20	15.88									
55+0	98.13	82.25	15.88									
56+0	96.32	82.30	14.02									
57+0	98.12	82.35	15.77	57+02								
58+0	96.44	82.70	13.74	57+39.5								
59+0	96.11	82.75	13.36									
60+0	96.82	82.80	14.02									
61+0	97.62	82.85	14.77									
62+0	97.06	82.90	14.16									
62+95	98.00	82.95	15.05	62+95								
					West	East						
0+0				0+00 Existing MH.								
1+0					0+85							
					1+02							
					1+21.5							
					1+46.0							
					1+91.5							
2+0				2+31.0 ^{O.H.}								

Private Line

Tap into MH 57 +39.5
 #508 - Tap - 2360 S. Hydraulic - 7-30-48 J. E. Lansdowne (#25.00 Special fee Paid)
 #510 - private line - 2360 S. Hydraulic - 7-30-48 J. E. Lansdowne
 #512 - private line 2360 S. Hydraulic - 7-30-48 J. E. Lansdowne
 #513 - Private line 2360 S. Hydraulic - 7-30-48 J. E. Lansdowne
 #514 - Private line 2360 S. Hydraulic - 7-30-48 J. E. Lansdowne