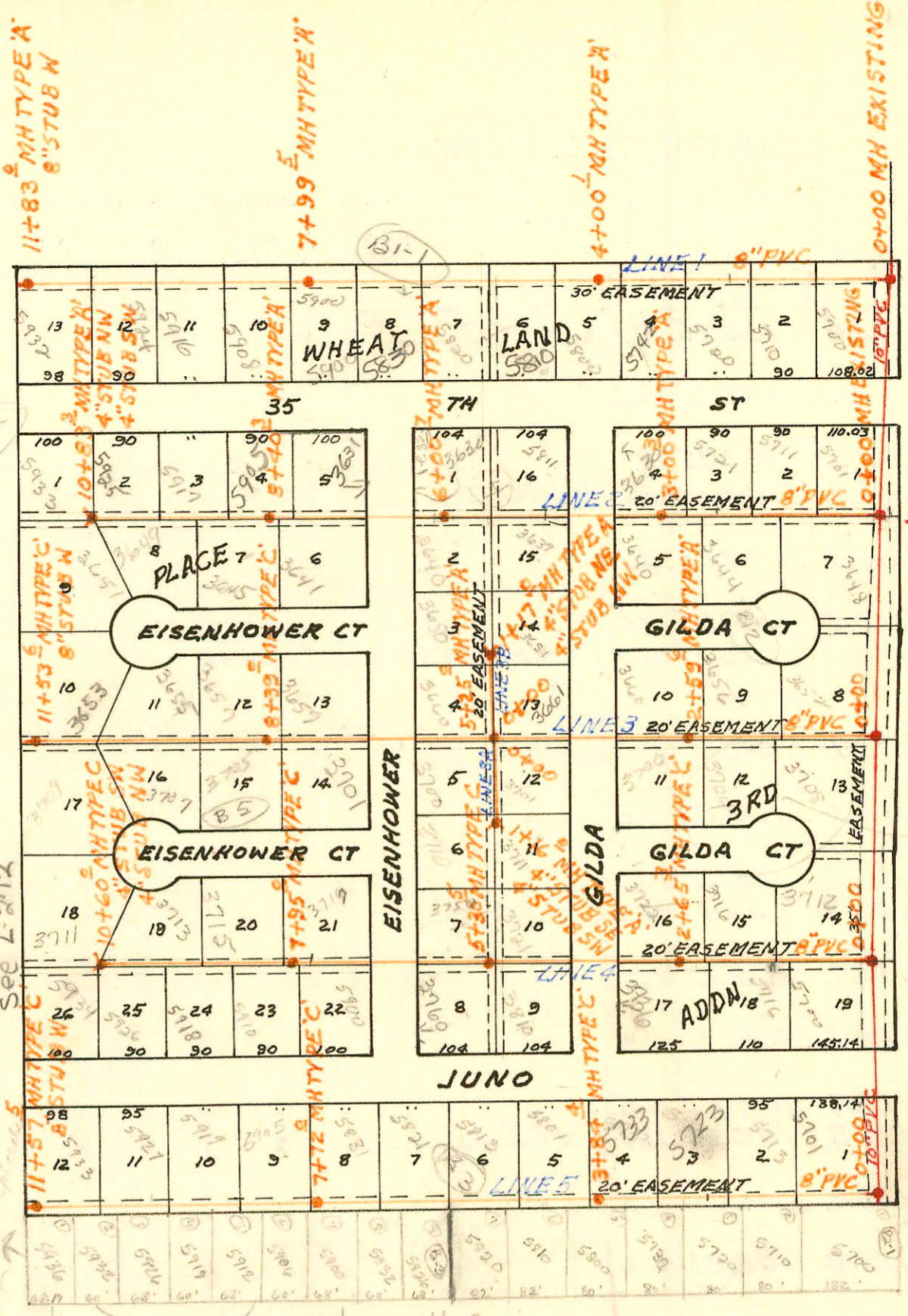


assessment
in I 213

County

SCALE 1" = 200'



MAIN 7A SOUTHWEST INTERCEPTOR SEWER
 BUILT BY: UTILITY CONTR. INC.
 PROJ. NO 468-76-245-80945-000-000-001
 BOOKED 8-27-80 FROM AG 13A

LATERAL 1 MAIN 7A SOUTHWEST INTERCEPTOR
 BUILT BY: UTILITY CONTR. INC.
 PROJ. NO 468-76-245-80944
 BOOKED 8-28-80 FROM AG 14A

Assessment Fee
 Required Note B 120
 1 thru 9 incl B 120
 Wheatland Pk 5th Addn.
 B 120
 B 120
 B 120

lots 1 thru 7 B 120
 Wheatland Pl 4th Addn
 Require spec. fee
 for connection
 (No Assessments)

CONSTRUCTION RECORD

SERVICE RECORD

STATION	ELEVATION		Depth	MANHOLE	4-INCH "Y" BRANCHES		No. of Permit		House Number		DATE OF PERMITS	
	Ground	Grade			North West	South East	North West	South East	North West	South East	North West	South East
MAIN 7A SOUTHWEST INTERCEPTOR SEWER												
0+00	108.3	102.90	5.4	EXISTING PIPE								
	108.3	102.96	5.3	0+25	8" STUB W							
1+00	108.6	103.15	5.5									
2+00	109.8	103.40	6.4									
3+00	110.0	103.65	6.4									
	110.2	103.77	6.4	3+49.0	8" STUB W							
4+00	110.3	103.90	6.4									
5+00	111.0	104.15	6.9		5+32.0 TAP		21565		3652 Gilda Ct		9/26/88	
6+00	111.5	104.40	7.1									
	112.9	104.53	8.4	6+53.0	8" STUB W							
7+00	113.5	104.65	8.9		7+12.0 TAP		21193		3708 Gilda Ct		7-29-88	
8+00	114.4	104.90	9.5		8+22.6 TAP		11890		3712 Gilda Ct		8-28-89	
9+00	114.9	105.15	9.8									
	115.3	105.30	10.0	9+59.6	8" STUB W							
10+00	116.2	105.40	10.8									
11+00	117.5	105.65	11.9									
12+00	118.8	105.90	12.9									
	119.4	106.10	13.3	12+79.8	8" STUB W 8" STUB S							
LATERAL 1 MAIN 7A SOUTHWEST INTERCEPTOR												
LINE 1 0+00	108.3	103.13	5.2	EXISTING								
1+00	109.1	103.53	5.6					2420	5700 W 35th S		11-27-95	
								25332	5710 W 35th S		5-16-90	
2+00	110.0	103.93	6.1		4" PVC 40			2406	5720 W 35th S		7-1-92	
					2+21.1 TAP	does not fit		2577	5742 W 35th S		11-15-93	
3+00	111.3	104.33	7.0		4" SDR 35							
	113.0	104.73	8.3	4+00.1	4+26.1 TAP			24728	5800 W 35th S		1-26-90	
5+00	113.6	105.13	8.5		5+02.1 TAP			22960	5810 W 35th S		4-20-89	
6+00	114.5	105.53	9.0		4" SDR 35			2438	5820 W 35th S		10-8-92	
					6+22.0 TAP			24282	5830 W 35th S		11-5-89	
7+00	114.9	105.93	9.0		4" SDR 35			41859	5900 W 35th S		1-15-92	
	115.2	106.33	8.9	7+99.5	7+89.0 TAP							
9+00	115.9	106.73	9.2		8+81.5 TAP			23121	5908 W 35th S		5-10-89	
10+00	116.6	107.13	9.5		9+30.0 TAP			26977	5916 W 35th S		9-24-90	
					10+35.0 TAP			26036	5924 W 35th S		11-29-90	
11+00	117.1	107.53	9.6		11+13.5 TAP			24953	5932 W 35th S		3-19-90	
	117.4	107.87	9.5	11+83.0	8" STUB W							
LINE 2												
0+00	110.2	103.95	6.3	EXISTING								
					4" SDR 35			2473	5701 W 35th S		3-15-93	
1+00	111.4	104.45	7.0		1+01.0 TAP			2446	5711 W 35th S	3688 Gilda Ct	10-28-92	3-24-92
2+00	112.8	104.95	7.9		4" Sch 40 PVS.			25438	5721 W 35th S	3644 Gilda Ct	11-11-93	5-30-90
	113.5	105.45	8.1	3+00.3	2+28.1 TAP			02571	5730 W 35th S	3600 Gilda Ct	4-17-92	10-17-85
					3+07.3 TAP			13481	5740 W 35th S			
4+00	114.6	105.95	8.7		4" SDR 35							
					4+65.7 TAP			2576	5811 W 35th S		11-17-93	
5+00	115.2	106.45	8.8		5+02.7 TAP			22492	3639 Gilda Ct			1-27-89

CONT'D NEXT PAGE

#02493 - 5701 W. 35th St. - 4" SDR 35 - 1" draw layer tap - 27' west of MH - 1/8" per ft fall (Verified with transit level) No bends in line - bent drain