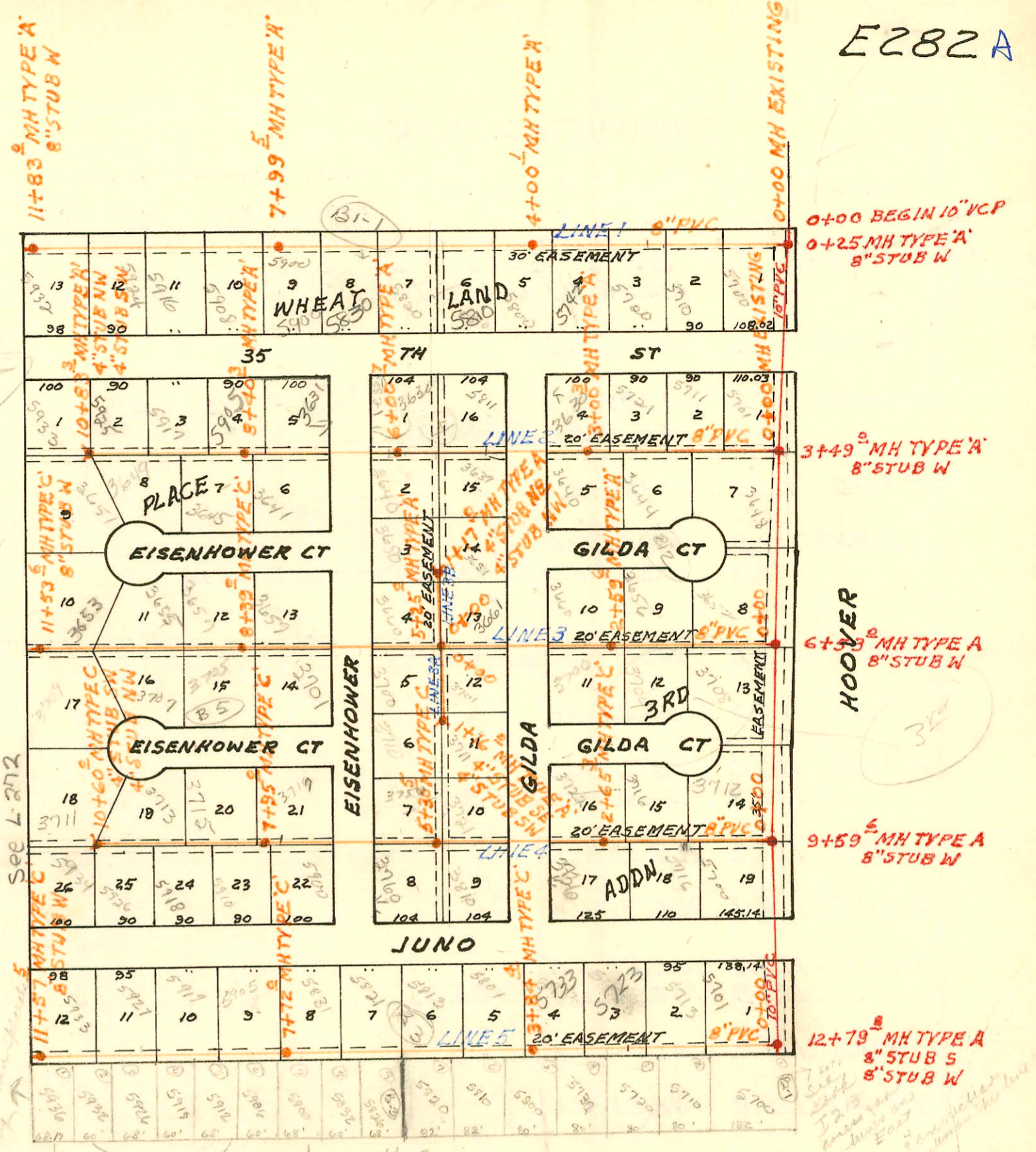


assessment
in I 213

County

SCALE 1" = 200'



Assessment Fee
 Required Note B120
 1 thru 9 incl B120
 Wheatland Pl 4th Addn
 2400

MAIN 7A SOUTHWEST INTERCEPTOR SEWER
 BUILT BY: UTILITY CONTR. INC.
 PROJ. NO 468-76-245-80945-000-000-001
 BOOKED 8-27-80 FROM AG 13A

LATERAL 1 MAIN 7A SOUTHWEST INTERCEPTOR
 BUILT BY: UTILITY CONTR. INC.
 PROJ. NO 468-76-245-80944
 BOOKED 8-28-80 FROM AG 14A

lots 1 thru 7 B120
 Wheatland Pl 4th Addn
 require spec. fee
 for connection
 (No Assessments)

CONSTRUCTION RECORD

SERVICE RECORD

STATION	ELEVATION		Depth	MANHOLE	4-INCH "Y" BRANCHES		No. of Permit		House Number		DATE OF PERMITS	
	Ground	Grade			North West	South East	North West	South East	North West	South East	North West	South East
LAT 1 LINE 2 CONT'D												
	116.0	106.95	9.1	6+00.7	4" SDR 35 8+90.3 tap	TAP 52' E. of WPL	12041	26637	3639 Eisenhower	3640 Eisenhower	9-18-84	11-29-90
7+00	116.6	107.45	9.2									
8+00	117.0 117.2	107.95 108.15	9.1 9.2	8+40.3	see below 4" SDR 35 8+90.3 tap	7+51.8 TAP 8+83.3 TAP	01634 1634	16699	5631 Eisenhower	3641 Eisenhower	12-5-81	7-28-86 10/14/87
9+00	117.5	108.45	9.1									
10+00	117.9 118.3	108.95 109.37	9.0 8.9	10+83.3	4" SDR 35 9+54.3 tap 4" SDR 35 10+22.3 tap 4" SDR 35 10+75.5 tap	9+58.3 TAP 4" SDR 40 4" STUB NW 4" STUB SW	2445 2523 2609	13113	5905 3574 S 5917 W. 35th 5923 W. 35th 5933 W. 35th	3649 Eisenhower 3651 Eisenhower	9-15-83 10-28-92 8-4-93 2-1-94	2-28-85 4-8-02
LINE 3												
0+00	113.8	104.71	9.1	0+00 EXISTING								
1+00	115.0	105.21	9.8									
2+00	116.0 116.7	105.71 106.01	10.3 10.7	2+59.6	2+00.0 TAP	1+70.4 TAP	21664	5597	3656 Gilda Ct	3704 Gilda Ct	9-26-88	4-12-88
3+00	117.2	106.21	11.0		3+08.6 TAP	3+07.6 TAP	15304	13112	3660 Gilda Ct	3700 Gilda Ct	12-18-85	2-28-85
4+00	118.1	106.71	11.4									
5+00	118.7 118.8	107.21 107.34	11.5 11.5	5+25.0		4+89.0 TAP	19268			3701 S. Gilda		10/17/87
6+00	119.2	107.71	11.5									
7+00	119.8	108.21	11.6									
8+00	120.6 120.8	108.71 108.91	11.9 11.9	8+39.0	8+81.0 TAP	8+14 TAP 8+58.0 TAP	22428	14703	3657 Eisenhower	3701 Eisenhower	1-7-89	9-17-85
9+00	121.0	109.21	11.8		9+67.6 TAP	9+70.0 TAP	26176	11448	3655 Eisenhower	3705 Eisenhower	9-24-90	7-13-84 10-8-85
10+00	121.1	109.71	11.4		10+47.4 TAP		5936		3659 Eisenhower	3707 Eisenhower	5-26-88	
11+00	120.9 120.8	110.21 110.48	10.7 10.3	11+53.6	10+64.2 TAP	10+71.6 TAP	5848	5753	3653 Eisenhower	3709 Eisenhower	5-11-88	4-27-88
LINE 3A												
0+00	118.8	109.33	9.5	0+00 = 5+25.0 LINE 3								
1+00	119.7 119.8	110.33 110.49	9.4 9.3	1+16.0	4" SDR 35 4" STUB SW	4" SDR 35 4" STUB SE	5587	2650	3710 Eisenhower	3711 Gilda	4-12-88	3-29-94
LINE 3B												
0+00	118.8	109.10	9.7	0+00 = 5+25.0 LINE 3	0+65.0 TAP	4" SDR 35 Tap +89	26111	2484	3660 Eisenhower	3661 Gilda	9-12-90	5-21-93
1+00	117.8 117.6	109.50 109.57	8.3 8.0	1+17.0	4" SDR 35 4" STUB NW	4" SDR 35 4" STUB NE	2479	4142	3650 Eisenhower	3651 S. Gilda	4-15-93	1-4-91
LINE 4												
0+00	115.3	107.00	8.3	0+00 EXISTING	DVC Saddle 50' tap	0+51.0 TAP	2548	19321	5701 Juno	5700 Juno	10-6-93	10/15/87
1+00	118.0	108.00	10.0			4" sch 40 1+35.0 TAP		2854	3716 Gilda Ct	5716 Juno		6-30-95
2+00	118.7 119.4	109.00 109.65 111.24	9.7 9.8 8.2	2+65.3	4" SDR 35 1+91.3 TAP	4" sch 40 2+70.3 tap	2441	27291		3736 S. Gilda		10-19-92 3-20-91
3+00	119.6	111.38	8.2		3+05.3 TAP			19808	3728 Gilda		12-03-87	
4+00	120.0	111.78	8.2									
5+00	120.5 120.7	112.18 112.30	8.3 8.5	5+30.5		4+72.5 TAP 5+40.9 TAP		11469 23546		3737 Gilda		7-13-84
6+00	121.2	112.58	8.6		5+74.5		3948		3750 Eisenhower		8-18-81	
7+00	121.7	112.98	8.7			7+30.0 TAP		20190		5900 W. Juno		6-3-88

CONT'D NEXT PAGE

01634 12-5-91 3631 S. Eisenhower - (4" SDR 35 33' east of WPL)

