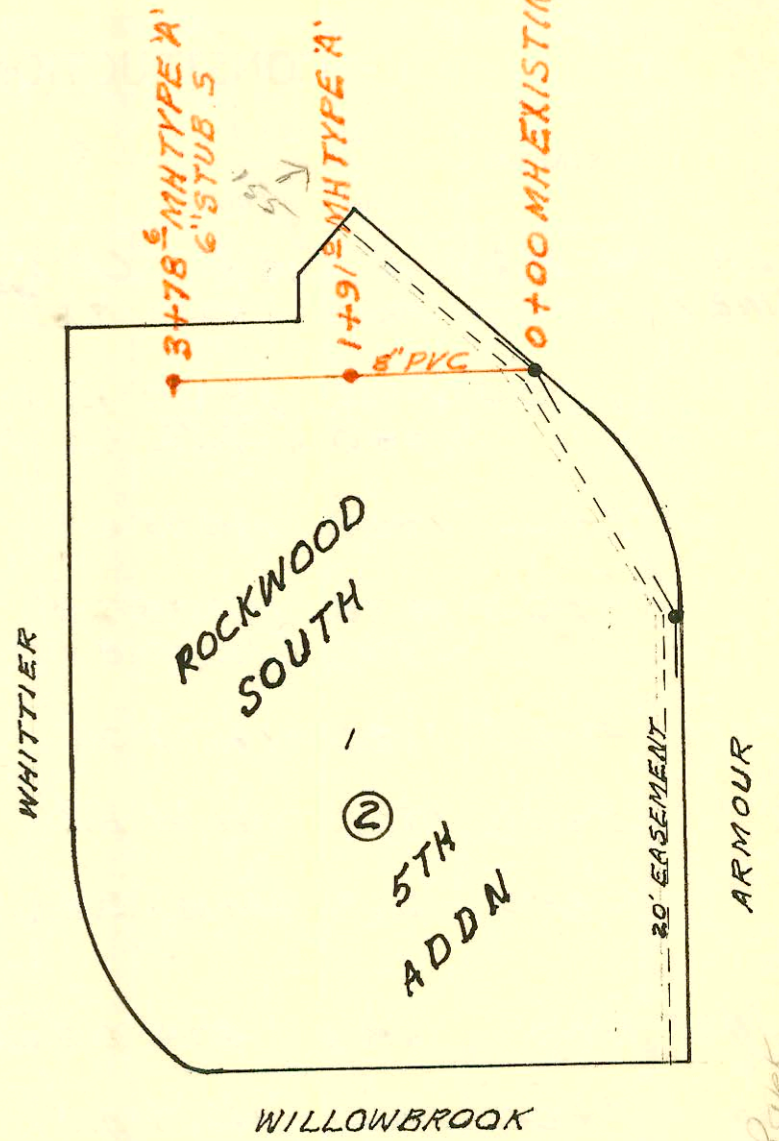


SANITARY SEWER FOR TARGET EAST  
BUILT BY: W.B. CARTER CONST. CO.  
PROJ. N<sup>o</sup> 468-76-245-80949-000-000-008  
BOOKED 9-10-80 FROM 9F

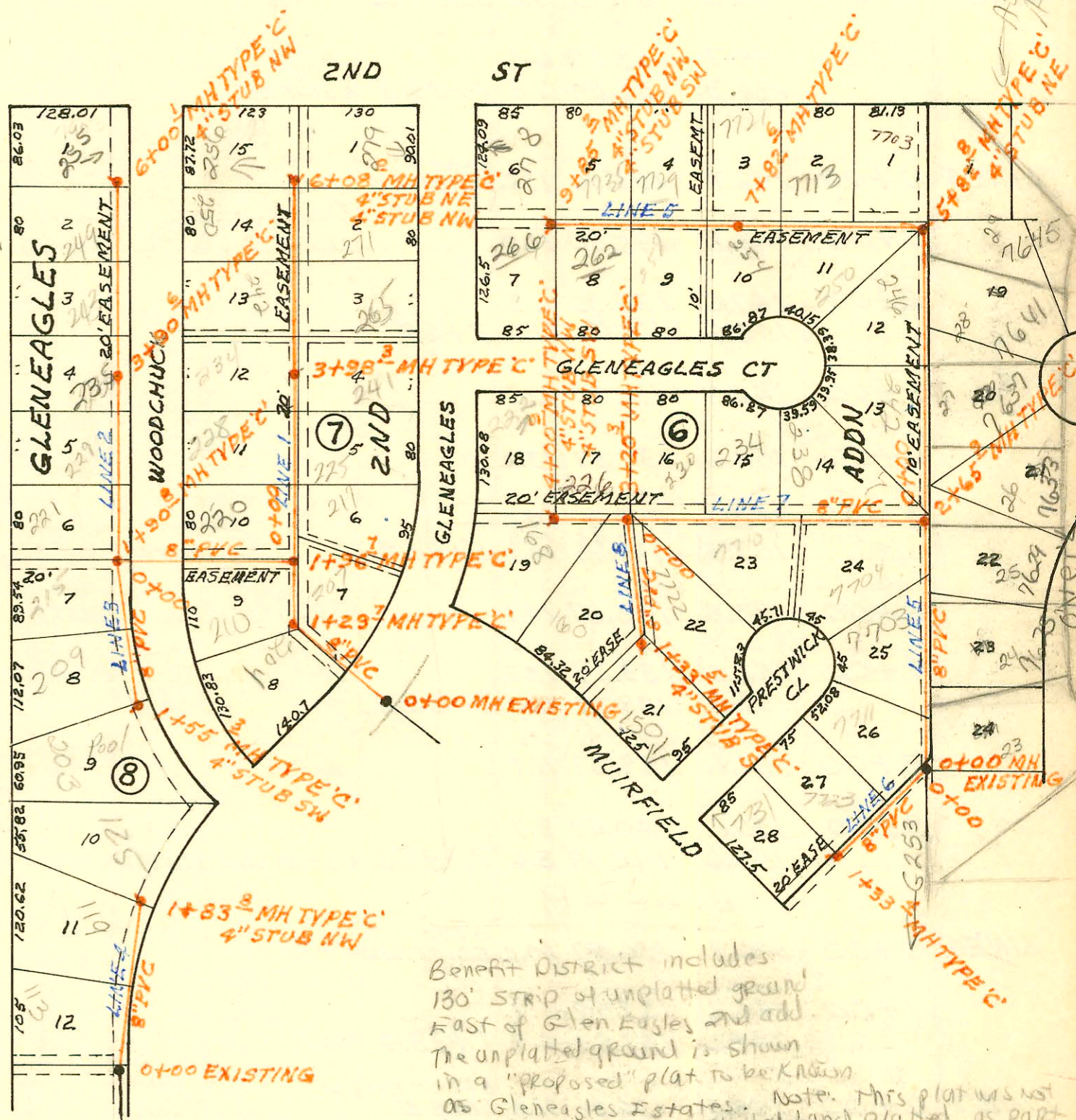
on map

12-53

SCALE 1" = 200'



SCALE 1" = 150'



Benefit District includes  
130' strip of unplatted ground  
East of Gleneagles and add.  
The unplatted ground is shown  
in a "proposed" plat to be known  
as Gleneagles Estates. Note: This plat was not  
done but rather unplatted land platted as part  
of Ashley Park Add. Remaining specially reserved  
lots in Ashley Park

LATERAL 34 MAIN 4 SOUTHWEST INTERCEPTOR  
BUILT BY: COLEMAN EXCAVATING CO.  
PROJ. N<sup>o</sup> 468-76-245-80856-000-000-001  
BOOKED 9-13-80 FROM LES 19

on map

12-34

CONSTRUCTION RECORD

SERVICE RECORD

STATION	ELEVATION		Depth	MANHOLE	4-INCH "Y" BRANCHES		No. of Permit		House Number		DATE OF PERMITS	
	Ground	Grade			North West	South East	North West	South East	North West	South East	North West	South East
LAT 34 MAIN 4 SWI (CONT'D)												
LINE 2 0+00	146.8	139.73	7.1	0+00=1+96.7 LINE 1								
1+00	147.7 148.0	140.03 140.30 140.40	7.7 7.7 7.6	1+90.8								
2+00	146.8	140.43	6.4									
3+00	147.8 149.2	140.78 141.10	7.0 8.1	3+90.6	2+58.6 TAP 4" SDR 35 4" 4" 2+05.6 TAP		18116 931094-7 22887		021 N Woodchuck 229 N Woodchuck 235 N Woodchuck		4-13-87 5-19-83 4-10-89	
4+00	148.7	141.13	7.6		4+09.6 TAP		30533		243 Woodchuck		4-22-88	
5+00	150.2	141.48	8.7		5+09.1 TAP		21464		249 Woodchuck 255 N Woodchuck		9-12-88	
6+00	150.9	141.83	9.1	6+00.1	4" STUB NW		97141237				8-12-97	
LINE 3 0+00	148.0	140.41	7.6	0+00=1+90.8 LINE 2	0+03.0 TAP		11315		215 Woodchuck		6-28-84	
1+00	146.0 147.5	140.71 140.88	5.3 6.6	1+55.3	1+04.3 TAP 4" STUB SW		12288 12539		209 N Woodchuck 208 N Woodchuck		5-7-87 11-9-84	
LINE 4 0+00	145.6	137.99	7.6	0+00 EXISTING	0+42.0		9824		113 N Glenageary		12-7-83	
1+00	144.7 146.3	138.29 138.54	6.4 7.8	1+83.8	1+39.8 TAP 4" STUB NW		8766 12399		119 N Glenageary 125 N Glenageary		8-11-83 10-29-84	
LINE 5 0+00	146.7	135.50	11.2	0+00 EXISTING								
1+00	146.8	135.90	10.9		4" SDR 35 1+34.9 TAP 4" SCH 40 1+22.9 saddle		95150857 9424177		7703 Prestwick 7625 O'Neil		9-22-95	2499
2+00	147.6 148.5	136.30 136.56	11.3 11.9	2+65.9	4" SCH 40 3+43.9 Predco		9612677 99-19607		7629 O'Neil 7633 O'Neil		7-31-91 2-5-99	
3+00	148.9	136.77	12.1									
4+00	150.6	137.37	13.2		3+84.9 TAP 4+74.8 TAP 4" SDR 35 4+15.9 4" SCH 40 4+68.8		15079 11837	94-9426-7 2150-66956	243 N Glenageary 246 N Glenageary	7637 O'Neil 7641 O'Neil	11-20-85 8-21-84	6-16-94 3-23-00
5+00	152.0 153.3	137.97 138.26 138.57	14.0 14.8 14.7	5+82.8	4" SCH 40 DL 5+56.8 TAP 4" STUB NE		2001-00031		7645 O'Neil		1-8-01	
6+00	152.8	138.67	14.1		6+26.8 TAP		12982		7703 W 2nd N		1-23-85	
7+00	152.0 151.8	139.27 139.77	12.7 12.0	7+82.6	4" SDR 35 7+10.6 TAP 4" SCH 40 7+91.6 7+91.6	7+09.8 TAP Spec Inspector M H Stubb	920867 94-28487	13760 15707	7713 W 2nd N 7721 W 2nd N	250 Glenageary 234 Glenageary	8-5-93 3-3-94	5-14-85 2-26-86
8+00	151.6	139.87	11.7		8+41.2 TAP		81832		7729 W 2nd N		11-03-88	
9+00	150.2 149.6	140.47 140.99	9.7 8.6	9+85.2	8+86.2 TAP 9+33.9 TAP 4" STUB NW 4" STUB SW		13705 18725 71-319657		278 Glenageary 262 Glenageary 266 Glenageary		5-6-85 7-17-87 9-5-91	5-6-85 7-17-87 10/26/87
LINE 6 0+00	146.7	136.50	10.2	0+00 EXISTING	0+63.4 TAP 0+74.4 TAP		10213 9497		7711 W 2nd N 7723 W 2nd N		2-15-84 10-24-83	
1+00	144.2 144.2	137.50 137.83	6.7 6.4	1+33.4	4" stub W		8968		7731 W 2nd N Prestwick		8-11-83	
LINE 7 0+00	148.5	136.66	11.8	0+00=2+65.9 LINE 5								
1+00	149.2	137.06	12.1		1+39.8 TAP 1+97.3 TAP 1+93.0 TAP	0+97.6 TAP	11279 16917 1873	11486	7704 W 2nd N 238 Glenageary 234 Glenageary		7-11-85 9-5-86 8/31/87	7-17-84
2+00	150.9	137.46	13.4		2+80.3 TAP		12726		230 N Glenageary		12-10-84	
3+00	150.6 150.5	137.86 137.94	12.7 12.6	3+20.3								
4+00	149.0	138.42	10.6	4+00.9	3+52.3 TAP 3+72.4 TAP 4" STUB NW 4" STUB SW		9235 15935	10940	226 N Glenageary 168 W 2nd N		12-8-83 3-4-86	5-16-84

CONT'D NEXT PAGE

