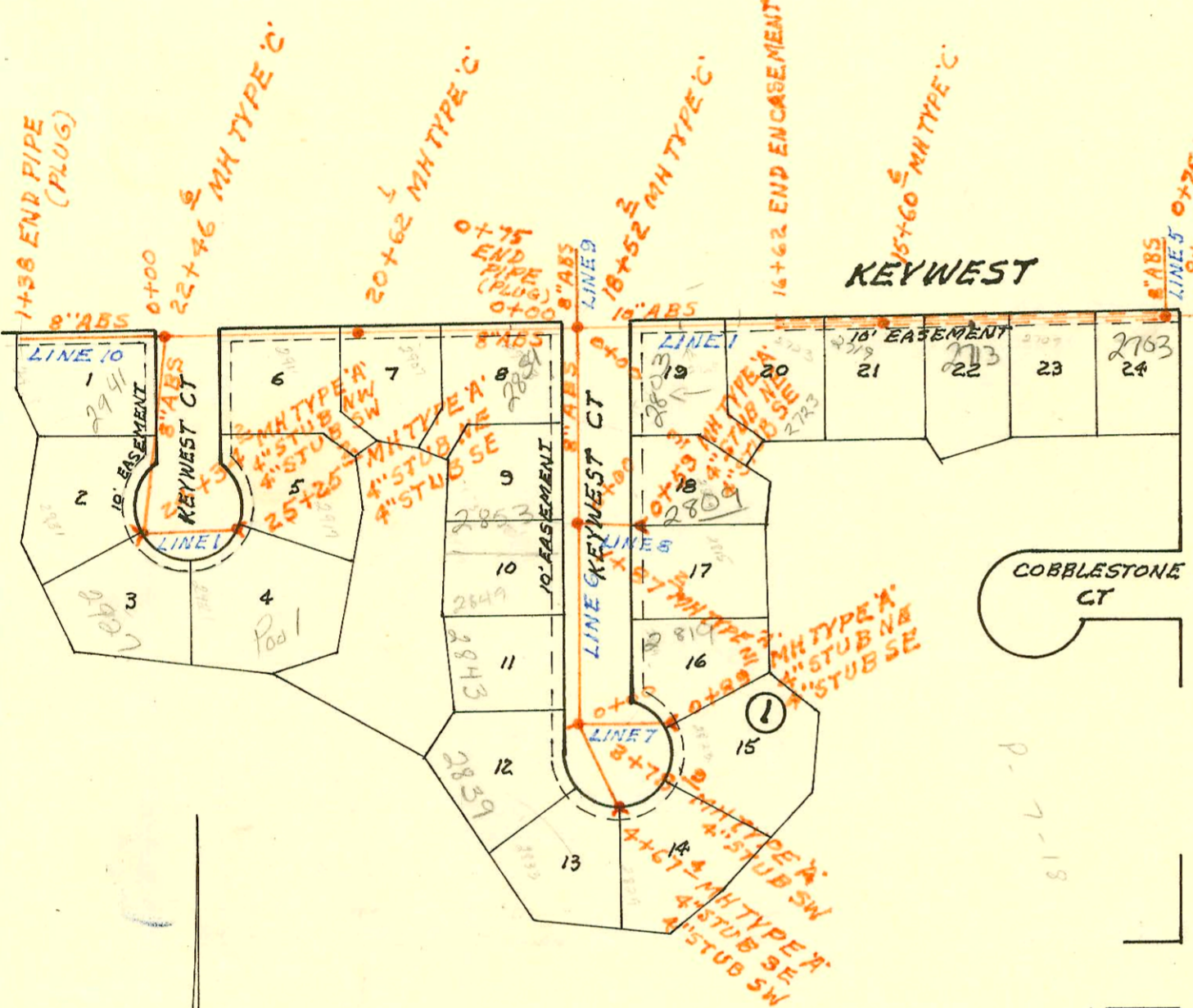
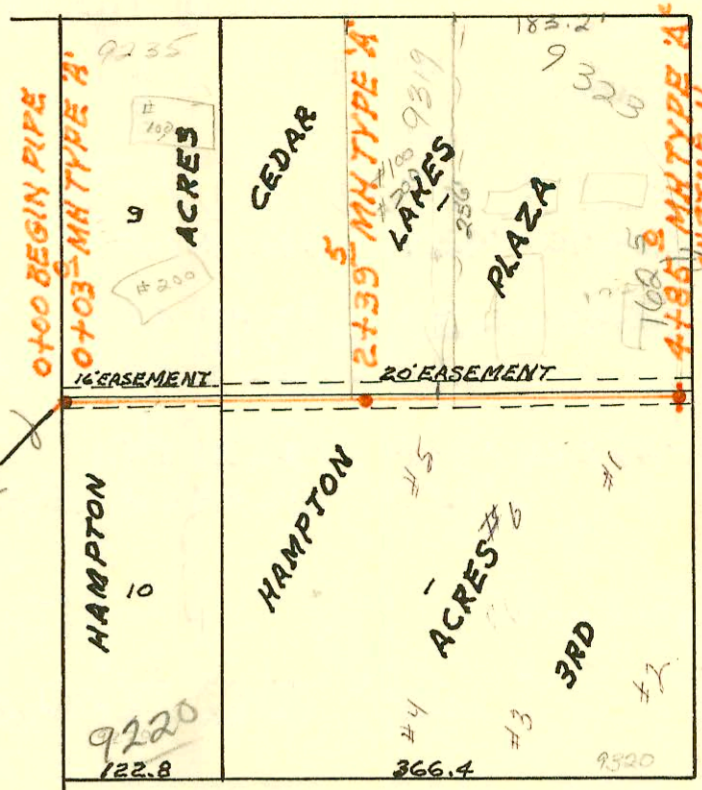


HARRY

SCALE 1" = 150'

LATERAL 10 MAIN 19 WAR INDUSTRIES SEWER
BUILT BY: TRIPLE C OF WICHITA INC.
PROJ. NO 468-76-245-80900-000-000-001
BOOKED 9-29-80 FROM SRL 9

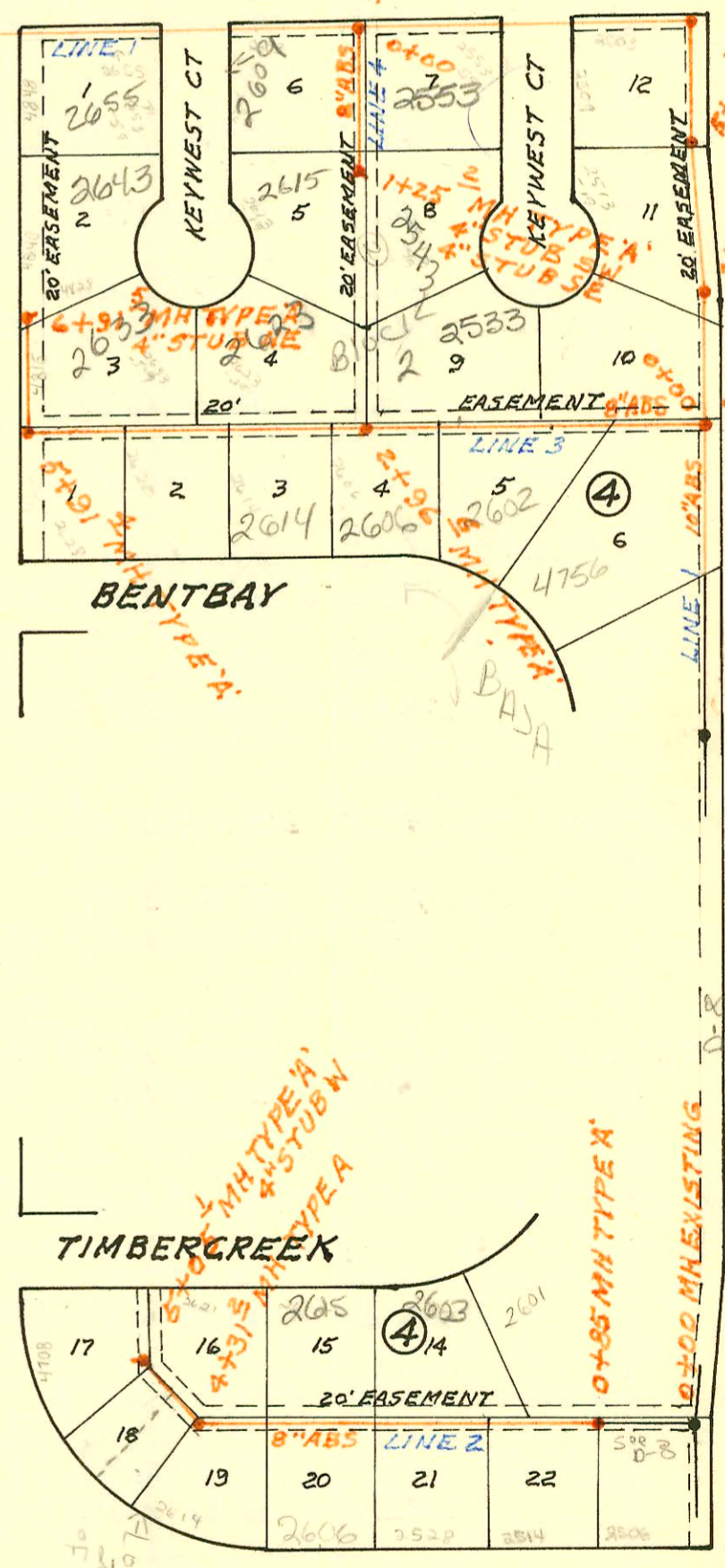
on map



SCALE 1" = 150'

LATERAL 33 SANITARY SEWER NO 23
BUILT BY: UTILITY CONTR. INC.
PROJ. NO 468-76-245-80440-000-000-001
BOOKED 10-7-80 FROM AG 12

on map



MILRO

CONSTRUCTION RECORD

SERVICE RECORD

STATION	ELEVATION		Depth	MANHOLE	4-INCH "Y" BRANCHES		No. of Permit		House Number		DATE OF PERMITS	
	Ground	Grade			North West	South East	North West	South East	North West	South East	North West	South East
LATERAL 10 MAIN 19 WAR INDUSTRIES SEWER												
0+00	169.4	159.78	9.6									
	169.4	159.79	9.6	0+03.0								
1+00	169.6	160.71	8.9		0+44.0 tag	0+61.0 TP	3369	22438	9235 E	9220 E	5-27-81	1-19-89
					1+21.9 tag	1+44.7 tag	3368	3458	9235 E	9220 E	5-27-81	6-8-81
						1+95.8 tag	3459	3459	9235 E	9220 E		6-8-81
2+00	170.8	161.56	9.2									
	171.0	161.90	9.1	2+39.5	2+93.0 TP		3069		9319 E		7-14-82	
3+00	171.3	162.41	8.9									
								3460		9320 E		6-8-81
								3462		9320 E		6-8-81
4+00	172.3	163.26	9.0									
	173.6	163.98	9.6	4+85.0	6" STUB N	6" STUB S	4355		1625 S Beech	9320 E		6-8-81
									9320 E		10-20-81	
LATERAL 33 SAN SEWER N#23												
LINE 1 0+00				EXISTING								
1+40	140.3	126.17	14.1	BEGIN PIPE						4754		8-9-93
										Baja NJC		
2+00	140.8	126.53	14.3									
	141.0	126.94	14.1	2+70.0								
3+00	141.5	127.02	14.5									
	141.5	127.23	14.3	3+85.3								
4+00	141.7	127.26	14.4		4+53.6 W	4" RISER						
5+00	141.2	127.46	13.7									
	140.8	127.49	13.3	5+15.7	5+78.6 W	4" RISER						
6+00	140.7	127.66	13.0									
	142.4	127.70	14.7	6+21.2								
		127.80	14.6									
7+00	141.8	127.96	13.8									
8+00	142.9	128.16	14.7									
9+00	142.4	128.36	14.0									
	142.8	128.38	14.4	9+10.7								
10+00	141.8	128.56	13.2									
11+00	141.7	128.76	12.9		11+42.6 W	4" RISER		2004		2655	Keywest	4-13-04
								01019				
12+00	141.8	128.96	12.8									
	141.4	129.14	12.3	12+91.2	REINF CONC							
13+00	141.4	129.16	12.2									
14+00	141.5	129.36	12.1									
15+00	141.5	129.56	11.9									
	140.7	129.68	11.0	15+60.6								
16+00	141.4	129.76	11.4									
17+00	142.0	129.96	12.0									
18+00	141.9	130.16	11.7									
	141.5	130.26	11.2	18+52.2								
19+00	142.1	130.38	11.7									
20+00	142.5	130.63	11.9									
	142.1	130.78	11.3	20+62.1								
21+00	142.7	130.88	11.8									
22+00	142.3	131.13	11.2									
	142.6	131.25	11.4	22+46.6								
		135.28	7.3									

CONT'D NEXT PAGE

- 9/24/87 #19132-1625 S. Beech Bldg #1 - NJC (4+59.5)
- #19133-1625 S. Beech Bldg #2 - NJC (3+10.0)
- #19134-1625 S. Beech Bldg #3 - NJC (3+02.5)
- #19135-1625 S. Beech Bldg #4 - NJC (4+61.0)