

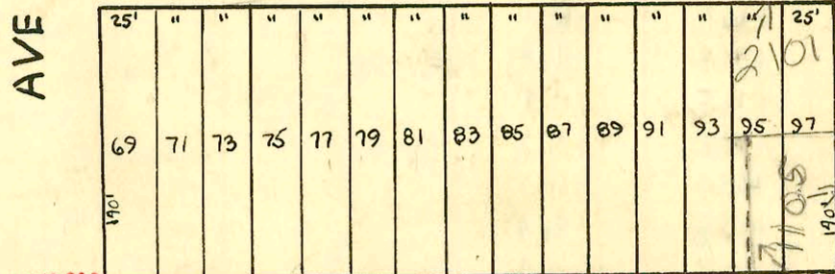
SERVICE RECORD

CONSTRUCTION RECORD

N

IRVING

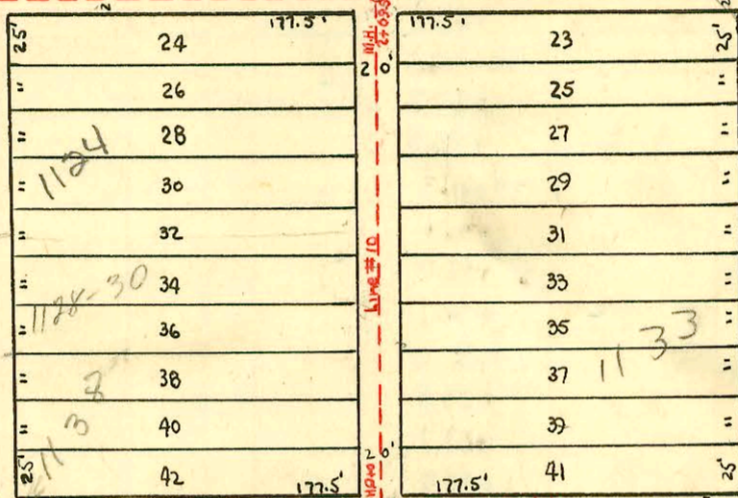
AVE



75'

AVE

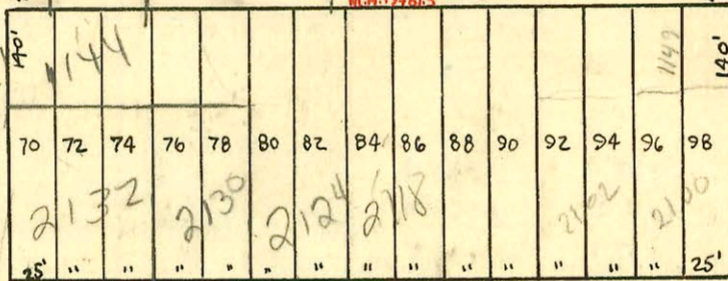
2002-00296 2/1/02 1124 S. Everett
 A Good Pibr- 4" PVC city tap into new
 B section - Dirt Alley cut



Private easmt
 F1100899
 Pg. 1155

F5

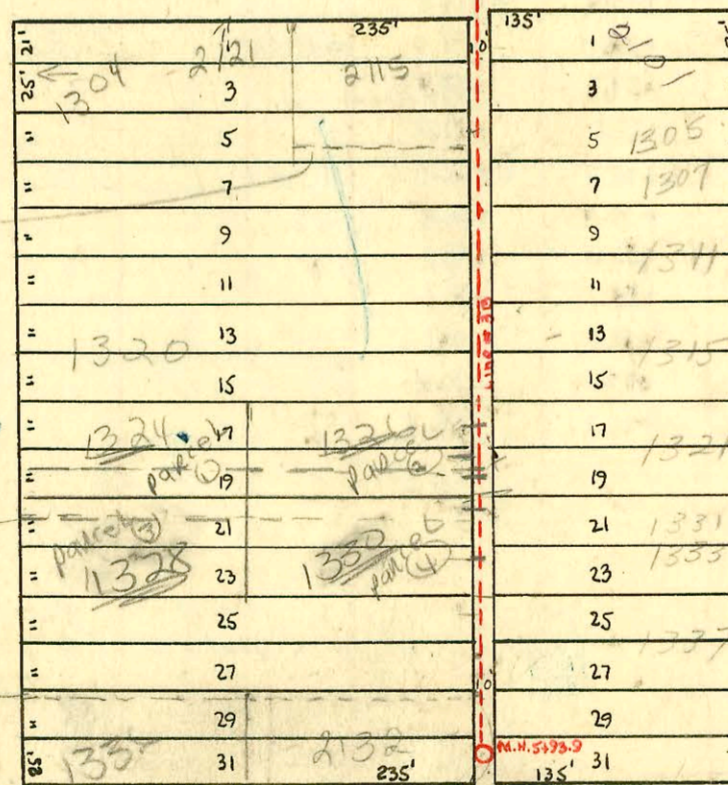
F3



1=100

WALKER

AVE



SUB MAIN B S.S. #21

W.B. CARTER CONST. CO.

1946

2003-03154 12/3/03 2118 W Walker
 Shallow - 4" PVC - 4" WYE 11.8' E of
 MH 19+61.3 (19+49.5) 14" fall - shallow
 replaced entire line - 1122, 4" existing
 Co at house - dirt alley cut

EVERETT

BONN

DOOLEY

AVE

(2153.0) # 4695 - Tap - 5101 Walker - 4-3-53
 #1600 Tap 504336 Everett - 5/3/79

4133 - Tap - 2102 Dooley - Delev - 3-26-57 (5+63.9) 510 120' w. of main at 30' N of MH 5193.9

(See F189 for 24" # C 18678-1300 Thravn - W.B. Carter Const. Co - 4-6-70 - (Sealed in M.H. 5193.9) and other records)

#1448 81897 115-88 1336 S. Everett - New Conn - (4" Absch 40 - tied into existing live clay tile at orig. Seal off)

2002-02082-8/1/02- 1105 Bonn - Olson Swr. - 2 Fernco, 1 twin Co, 1H45, 1H22, 4" 40PVC, Replace 15' of pipe at house

CONSTRUCTION RECORD

SERVICE RECORD

STATION	ELEVATION		Depth	MANHOLE	4-INCH "Y" BRANCHES		No. of Permit		House Number		DATE OF PERMITS	
	Ground	Grade			North West	South East	North West	South East	North West	South East	North West	South East
Line #15 11+0	5.8	100.10	6.19	Sealed 6-24-54 OH. 11220.0	N.Y.S. 11+96.0	S.Y.S. 12+35.0			1111 Bonn		3-23-53	
12+0	7.1	100.20	7.60		12+20.0 4" PVC 12+38.0		#4567 #1533	20035 1631	1005 Bonn		7-17-51 7-15-50	
					+64.2		#1332		2107 Irving		12-24-47	
					+91.1							
13+0	7.8	100.30	8.22		13+15.2		#4524		2109 Irving		5-3-51	
					+39.4		#2998		2111 Irving		4-29-48	
13+79.0	8.7	100.38	8.87	MH 13+79.0	+69.5							
					+93.2							
14+0	9.3	100.40	9.22		14+19.1							
					+42.5							
					+67.3		#5843		2123 Irving		9-18-51	
					+94.4		#2474		2127 Irving		4-13-41	
15+0	8.9	100.50	9.22		15+22.0							
15+94.8	8.9	100.60	8.38	OH. 15+94.8	+46.4		#1905		2125 R Irving		3-31-48	
Line #10 0+0	8.9	100.37	9.05	0+0	W.Y.S. 0+13.2	E.Y.S. 0+10.2						
					+41.2	0+38.2	#7227		1138 S. Everett		12-15-53	
					+57.5	0+54.5		#2265	1037 Bonn		9-7-50	
					+94.2	0+91.2			1128-30 Everett		4-7-71	
1+0	8.9	100.47	9.05		1+18.6	1+15.6	#23631 #3726 6580	2306	1130 Everett	1129 Bonn	6-26-67 11-26-51	9-7-50
					+46.4	+43.4						
					+72.7	+69.7						
					+99.6	+96.6	#1789	2002-00296 46-5847	1124 R Everett	1133 S Bonn	2-1-02 12-21-48	4-22-90
2+0	8.5	100.57	8.64		2+25.2	2+22.2						
2+69.5	8.6	100.64	8.60	2+69.5	+42.7	+39.7						
Line #1 17+0	6+0	99.78	6.72	17+23.4				#1036	2100 Walker		5-24-54	
18+0	6.4	99.88	7.06									
19+0	7.4	99.98	7.71									
19+61.3	8.9	100.04	9.18	19+61.3								
20+0	9.2	100.08	-									
21+0	9.0	100.18	9.97									
Line #3B 0+0	6.8	100.41	6.19	0+0	W.Y.S.	E.Y.S.						
1+0	6.7	100.51	5.91	1+88.5								
2+0	6.3	100.71	6.21									
3+0	7.3	100.81	7.14		2+28.1	2+25.1						
					+51.4	+48.4	#2992		1301 S. Bonn		11-6-50	
					+76.2	+73.2	#1483	2003-0154 2000-01907	2115 S. Walker	1305-07 Bonn	7-26-00 1-17-48	4-28-71
					+97.4	+94.4	#2192		2121 W R Walker	1321 S. Bonn	8-30-00	10-6-54
3+0	7.3	100.81	7.14		3+00.4		2992		1310 Everett	See Below	10-6-52	
					+23.6	3+20.6						
					+44.3	+44.3						
					+74.4	+71.4	12411		1300 S. Everett	1315 Bonn	3-24-60	
					+98.4	+95.4		2890				10-21-52
4+0	6.7	100.91	6.42		4+22.3	4+19.3						
					+47.2	+44.2	3897	#2365	1328 Everett	1333 S. Bonn	2-26-51	9-2-52
					+70.2	+67.2						
					+94.2	+91.2						
5+0	7.0	101.01	6.37		5+18.0	5+15.0		3719		1331 S. Bonn		6-26-67
					5+42.3	+39.3	#32714	2004-00424 5541	1332 S. Everett	1337 S. R Bonn	6-7-72 6-12-53	2/18/04 7-28-53
5+93.9	7.1	101.11	6.57	5+93.9	+89.2	+86.2						

Rep-2000-01907-888/00-2121W Walker-Woodward Plog-4" SCH 40, CITY TAP, 98' S of MH 1488.5 (2+80.5) 2TWINCO, 1V22, 1H22, 2H22, Fernco to CI

Rep-2000-01906-8128/00-1304 S Everett-Woodward Plog-4" SCH 40, CITY TAP-944 S of MH 1488.5 (2+82.9) 4" SCH 40 CITY TAP - 2TWIN CO, 2H22, Fernco to CI @ house - replaced entire line - Dirt Alley cut

- N/C SWR 2006-00962 132 S Everett Apt 1+2, 149' N.Y. MH, 4" SCH 40 PVC, (1) TWINCO, (2) 45H, (1) 45V - ASAP PIM 4-21-06
- N/C SWR 2006-00963 132 S Everett Apt 1+2, 125' N.Y. MH, 4" SCH 40 PVC, (1) TWINCO, (2) 22H, (2) 45H - ASAP PIM 4-21-06
- N/C SWR 2006-00965 132 S Everett Apt. 1+2, 170' N.Y. MH, 4" SCH 40 PVC, (1) TWINCO, (1) 22V - ASAP PIM 4-21-06
- N/C SWR 2006-00967 1330 S Everett Apt 1+2, 99' N.Y. MH, 4" SCH 40 PVC (1) TWINCO, (1) 22V - ASAP PIM 4-21-06

- # 2862 - 2112 Everett - 10-29-50 - E.B. Brunner
- # 5039 - 2123 Walker - 6-21-51 - E.B. Brunner
- Trailer #3845 - Irving Ave - 1311 Bonn - 10-13-52 - C. Grant McCoy
- # 1906 - 2107 Bonn - 9-8-54 - Fredericka Plumb
- # 1905 - 6008 - 1133 S Bonn - 9-8-54 - Fredericka Plumb
- # 6776 - 14 - 1307 - 90 Walker - 10-25-55