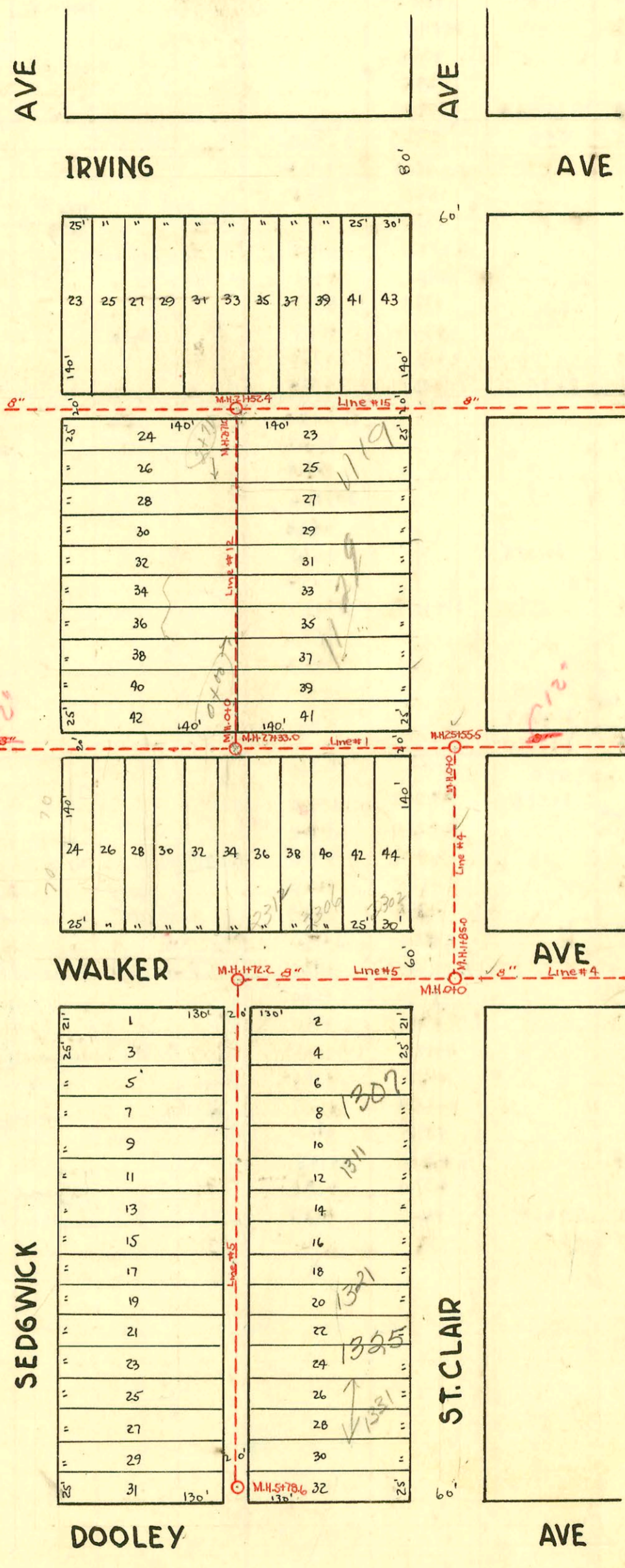


CONSTRUCTION RECORD SERVICE RECORD



SUB MAIN B SS#21
W.B. CARTER CONST. CO.
1946

CONSTRUCTION RECORD

SERVICE RECORD

STATION	ELEVATION		Depth	MANHOLE	4-INCH "Y" BRANCHES		No. of Permit		House Number		DATE OF PERMITS	
	Ground	Grade			North West	South East	North West	South East	North West	South East	North West	South East
Line#15 20+0	8.8	101.00	8.24		N.Y.S. 20+23.0 +48.0 +72.0 +97.0	S.Y.S.	#1902		2303 Sunny		8-10-50	
21+0	9.3	101.10	8.78		21+21.8 +455		#1901		2307 Sunny		8-10-50	
21+52.4	9.1	101.15	8.80	21+52.4	+705		#895		2315 Sunny		5-11-54	
22+0	8.8	101.20	8.28		+92.5 22+18.5 22+43.6 +68.3		#7837 #894 #2151 #222		2321 Sunny 2319 Sunny 2325 Sunny		6-2-51 5-11-54 11-15-55 4-27-51	
Line#12 0+0		101.14	8.28	0+0	W.Y.S. 0+20.1 +445 +68.5 +93.5	E.Y.S. 0+17.1 +41.5 +655 +905	#6078		1139 & R St. Clair		8-7-53	
1+0	8.6	101.24	7.69		+118.0 +41.7 +69.4 +90.5	+15.0 +38.7 +66.4 +87.5	#4448 #13921 #4485		1134 & Sedgwick 1129 & St. Clair		4-24-51 5-7-69 4-27-51	
2+0	9.0	101.34 101.15 101.41	8.06 8.80 8.54	2+71.0	+215.3 +39.0	+212.3 +36.0	#5040 #3477		11285 Sedgwick 1124 & Sedgwick		6-18-51	
2+71.0							#4483		1125 & St. Clair		2-16-56	4-27-51
Line#1 26+0	9.1	100.68	8.82				#6079		2302 Walker		8-7-53	
27+0	8.4	100.78	7.76									
27+33.0	8.5	100.81	8.25	27+33.0			#6296 #4417		2318 Walker	see top	2-17-71 3-11-53	
28+0	8.3	100.88	7.78				#4419		2354 Walker		2-11-53	
Line#5 0+0	-	101.26	7.56	0+0	W.Y.S.	E.Y.S.						
1+0	8.9	101.36	7.25	1+72.2								
2+0	8.0 8.3	101.56 101.43 101.51	7.20 6.86 6.76		2+06.8 +29.8 +51.5 +76.0	2+03.8 +26.8 +485 +73.0	#382 #1707		1301 & St. Clair 1307 & St. Clair		4-17-51 6-18-51	
3+0	8.4	101.66	7.22		+23.4 +50.9 +74.9	+20.4 +47.9 +71.9 +99.8	#5712 #2956 #3554		1310 & Sedgwick 1318 & Sedgwick		1-17-55 8-29-51 12-15-52 5-4-66	2-18-88 11-21-57
4+0	8.1	101.76	6.91		4+02.8 +28.6 +53.8 +76.7	4+25.6 +49.8 +73.7 +99.2	#837 #2578		1321 & St. Clair 1325 & St. Clair 1331 & St. Clair	see below	12-14-52 12-18-53 4-28-03 1-5-54 2-8-54	
5+0	7.5	101.86	6.58		5+02.2 +28.0 +52.0	5+25.0 +49.0	#836		1332 & Sedgwick		4-8-52	
5+78.6	7.3	101.94	5.81	5+78.6	+76.3	+73.3	#835		1335 & Sedgwick		4-8-52	6-4-53

2003-01130-4/28/03-1325 S St Clair - Bammes Pkg - 4" PVC - city wye repair 105' W of MH 5786 (473.1) & Predeo
 1 twinco, 2445, alley cut, shallow
 99-2749-7 2/18/99 1321 S St Clair - Redde Raptor
 C-22967-2318 Walk - 2-17-71 - Hemming top (27+45.3)
 #1372 - 2nd - 2312 Walker - 6-23-50 - Reynolds Pkg Co (27+16.2) top
 #4449 - 2nd - 1138 S. Sedgwick - 4-24-51 - Kendall Pkg Co
 #5605 - 2nd - 1118 S. Sedgwick - 8-15-51 - Howard Shepherd