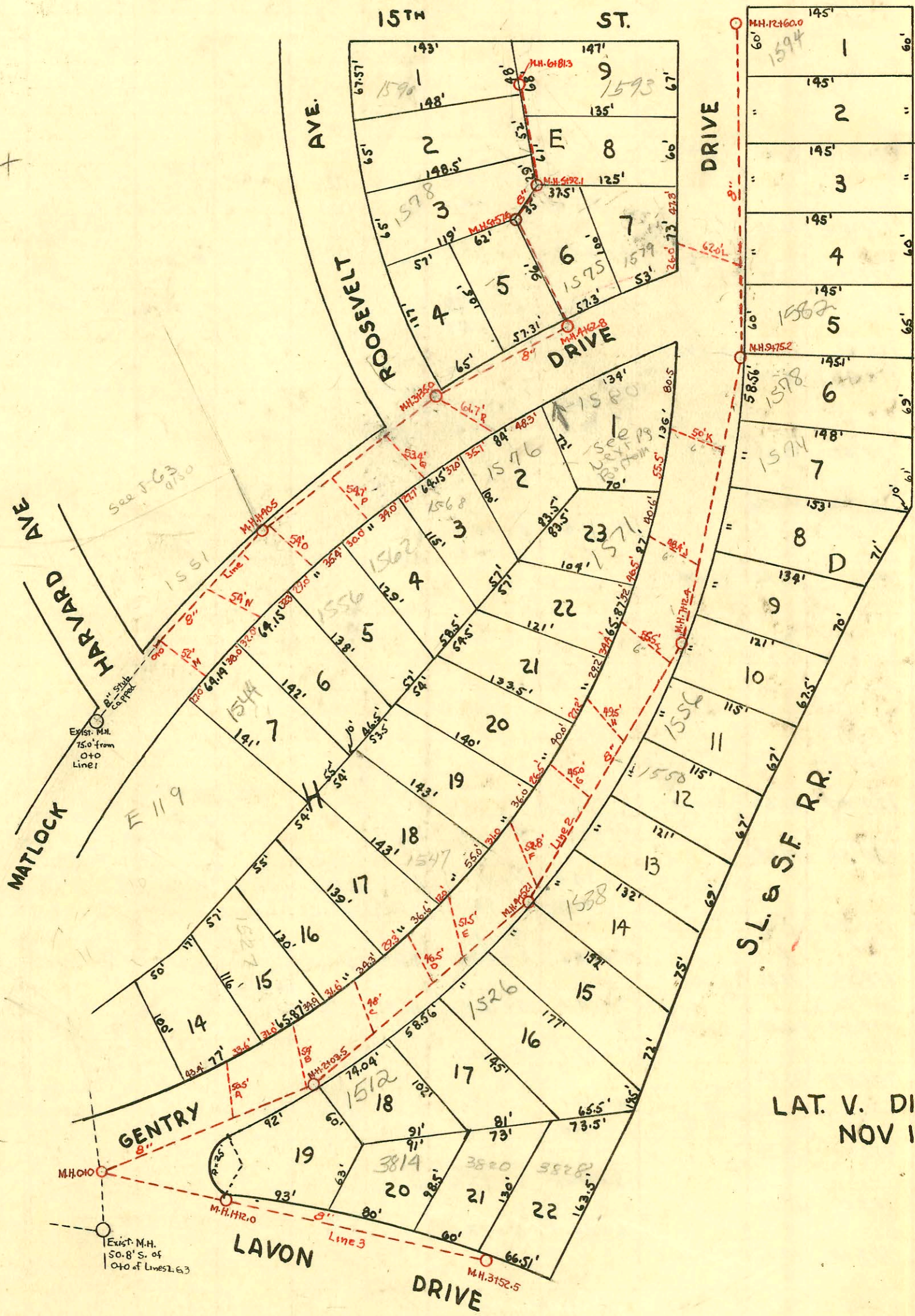


1"=100'



9+



NOTE: 2/10/93
 Homeowner
 responsible for
 Bldg Service Line
 from House to 8"
 City Lateral per
 David Warren Supt.
 Water and Sewer
 Dept (BR)

6" Leads

LAT. V. DIST. E. S. S. #12
 NOV 1946 W.B. CARTER

CONSTRUCTION RECORD

SERVICE RECORD

STATION	ELEVATION		Depth	MANHOLE	4-INCH "Y" BRANCHES		No. of Permit		House Number		DATE OF PERMITS	
	Ground	Grade			North West	South East	North West	South East	North West	South East	North West	South East
Line 1 0+0	9.0	170.75	9.13			"M" Riser 0+07.7 "N" Riser +71.5	#644	1544 Matlock			8-22-47	
1+0	9.8	170.85	9.45			"O" Lead 1+47.8 "P" Lead 2+17.8 "Q" Lead +77.3	#1012	1556 Matlock			10-27-47	
1+40.5	0.5	170.85 out 176.00 in	5.36	1+40.5			#1405	1562 Matlock			1-8-48	
2+0	2.8	177.22	5.82				#1865	1564 Matlock			3-25-48	
3+0	7.3	179.36	9.20			"R" Lead 3+35.0	#1903	1576 Matlock			4-9-48	
3+35.0	6.3	180.28	8.47	3+35.0	see below 3+66.5		#758	1563 R Matlock			1-25-43 9-15-47	
4+0	6.2	181.50	5.39		4+21.3		#856	1569 Matlock			10-3-47	
4+62.8	0.5	183.00 out 186.00 in	6.15	4+62.8		4+94.7						
5+0	4.2	187.03	7.37		4" ABS 40 5+77.0		#2784 364	1578 R Matlock			2-15-93 7-7-48	
5+57.6	3.6	188.87	4.63	5+57.6								
5+92.0	5.9	190.75	5.54	5+92.0								
6+0	5.9	190.75	5.54			6+15.5	#363	1584 M Request			1-23-47	
						+76.7	#34	1593 Request			7-7-48	
6+81.3	0.8	193.97	7.12	6+81.3			#267	1589 Request			5-21-48	
Line 2 0+0	-	170.15	1.93	0+0	"A" Conn. 1+28.9	1+44.6	#875	1531 Gentry			10-31-46	
1+0	-	170.25	2.94		"B" Lead +92.9		#1289	1529 Gentry			1-20-47	
2+0	-	170.85 out 172.00 in	5.58 3.93	2+03.5	"C" Lead 2+73.8	4" PVC CO 2+35.4	#1039	2002-02 339	1512 R Gentry		8-26-02 11-4-47	
3+0	4.5	173.62	10.77		"D" Lead 3+42.9 "E" Conn. 3+79.0	Conn. 2+90.5 Conn. 3+45.9	#874 941895 #875 939213 #872	1520 Gentry 1526 Gentry 1544 R Gentry			10-31-46 11-14-46 10-31-46	
4+0	3.4	175.24	6.92		"F" Lead 4+60	Conn. 4+21.0	#871	1532 Gentry			10-31-46	
4+52.1	3.2	176.05 out 178.00 in	7.04 5.09	4+52.1	"G" Lead 5+57.6	+72.2	#1909	1555 Gentry			5-1-47	
5+0	4.1	180.08	4.44		"H" Lead 6+18.4	5+30.0	#1014	1559 Gentry			10-27-47	
6+0	-	184.25	10.54		"I" Riser 6+98.0	5+91.7	#1060	#82 1563 Gentry			5-28-47	
7+0	-	188.45	8.36		"J" Riser 7+84.9	6+74.3	#1314	#1908 1571 Gentry			12-19-47	
7+12.4	7.0	189.00	8.22	7+12.4	"K" Riser 8+88.7	7+07.0 7+69.7	#1910	1570 Gentry			5-1-47	
8+0	9.9	189.95	9.79		"L" Lead 10+58.5	8+23.9 +82.0	#1911	1574 Gentry			5-1-47	
9+0	9.9	191.04	9.36			9+38.3	#282	1578 R Gentry			9-20-47	
9+75.2	7.6	191.88	5.95	9+75.2		9+95.4	#2177	1594 Gentry			4-22-48	
10+0	5.9	192.14	1.96			10+43.2	#1577	1599 Matlock			9-25-48	
11+0	0.07	193.23	6.56			11+20.1	#283	1590 Gentry			6-25-47	
12+0	3.6	194.83	9.22			+78.7	#284	1594 Gentry			6-25-47	
12+60	4.6	195.00	9.78	12+60.0	No. Y's So. Y's	12+25.0						
Line 3 0+0	-	170.35	1.77	0+0								
1+0	7.2	170.45	7.41									
1+12.0	7.3	170.47 172.00	7.63 6.10	1+12.0		1+29.7						
2+0	0.9	174.92	7.20			2+26.8	#676	1584 Gentry			8-28-47	
3+0	3.2	178.26	5.95			+89.0	#877	1586 Gentry			10-31-46	
3+52.5	4.1	180.00	4.94	3+52.5		3+46.5	92-2137	1590 Gentry			2-27-92 10-31-46	

See Plat for the location of the Leads on Lines 1 and 2

2000-01370 6/6/00 1526 N Gentry - Padgett RXC - WYE STN 3+50.1 (4" SCH 40) INSTAL (2) TWINE CO

99-64587 4/23/97 1580 N Matlock - Redd. Root - Line from 1580 Matlock crosses front of 1576 Matlock & ties to 6" lead at DL. Repl with 4" sch 40. No record of ease agree.

#1548 - Job - 1551 Matlock Drive - 3-1-47. Fredrick Pllg. Co. (#1000 Special fee paid 3-24-47 by J.C. Gardner)

#970 Job - 1557 Matlock Dr 10-13-47 Fredrick Pllg. Co. (#1000 Special fee paid 10-13-47)

#1013 - Job - 1575 Matlock - 10-27-47 - Fredrick Pllg. Co.

92-24267 6/17/92 1547 Gentry - Hennings - (No INSP Recd - Exp 8/9/92)

93-9243-7 4/26/93 - 1247 N. Gentry - Replaced entire line 4" PVC 40 w/ 6" Clay + tie leads on manht - 2' per 4' full station

93-20707 1563 Matlock (4" pvc 40 Replaced all but upper 25')

94-184587 11/4/94 - 1526 N Gentry - DL Replaced Line at 45' 21' at water main approx 2' of 4" PVC 40