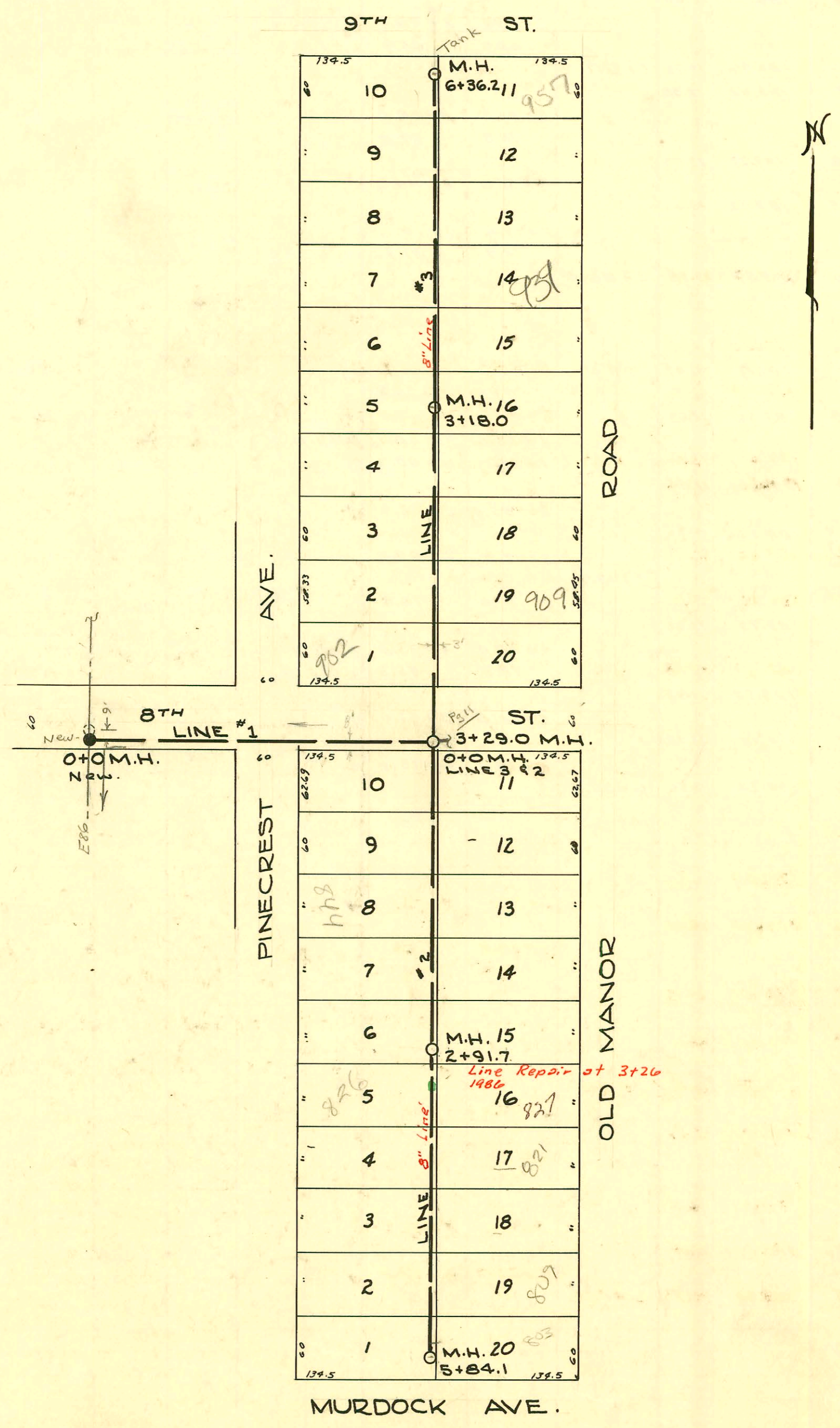


CONSTRUCTION RECORD SERVICE RECORD



LAT. 22, DRY CREEK SUB. S.S.#12
1946

CONSTRUCTION RECORD

SERVICE RECORD

STATION	ELEVATION		Depth	MANHOLE	4-INCH "Y" BRANCHES		No. of Permit		House Number		DATE OF PERMITS	
	Ground	Grade			North West	South East	North West	South East	North West	South East	North West	South East
See page 13 For grades on Line 1												
0+0		178.00	11.98	0+0	0+25.4	0+22.4	#1866	#1732	856 N. Concrete	857 N. Old Manor	4-23-47	4-5-47
					87.0	84.0	#1865	#1733	850 N. Concrete	851 N. Old Manor	4-23-47	4-5-47
1+0	188.7	178.20	11.05		1+48.2	1+45.2	#1867	#1734	844 N. Concrete	845 N. Old Manor	4-23-47	4-5-47
2+0	191.3	178.40	13.73		2+08.3	2+05.3	#1863	#1735	838 N. Concrete	839 N. Old Manor	4-23-47	4-5-47
					69.3	66.3	#1862	#1736	832 N. Concrete	833 N. Old Manor	4-23-47	4-5-47
3+0	191.8	179.41	13.12	2+91.7	3+30.0	3+27.0	#1861		826 N. Concrete	827 N. Old Manor	1-26-90	4-23-47
	191.7	179.42	12.94		90.6	87.6	#1860		820 N. Concrete		4-23-47	
4+0	192.4	179.62	13.61		4+50.4	4+47.4	#1859	#1717	814 N. Concrete	815 N. Old Manor	4-23-47	
5+0	193.1	179.72	14.06		5+11.6	5+08.6	#1858	#1713	808 N. Concrete	809 N. Old Manor	4-23-47	
					73.2	70.2	#1857	#1712	802 N. Concrete	803 N. Old Manor	4-23-47	
	194.3	180.00	14.92	5+84.1								
0+0		178.00	11.66	0+0	0+74.2	0+71.2	#375	#374	902 N. Concrete	903 N. Old Manor	7-10-47	7-10-47
1+0	193.6	178.50	14.08		1+34.4	1+31.4	#698	#706	908 N. Concrete	909 N. Old Manor	9-5-47	9-5-47
					1 95.3	92.3	#699	#707	914 N. Concrete	915 N. Old Manor	9-5-47	9-5-47
2+0	195.3	179.00	15.45		2+56.2	2+53.2	#700	#708	920 N. Concrete	921 N. Old Manor	9-5-47	9-5-47
3+0	196.9	179.50	16.22		3+14.1	3+11.1	#701	#709	926 N. Concrete	927 N. Old Manor	9-5-47	9-5-47
	197.0	179.59	16.82	3+18.0	3+77.7	3+74.7	#702	#710	932 N. Concrete	933 N. Old Manor	9-5-47	9-5-47
4+0	196.7	182.00	13.64		4+38.1	4+35.1	#703	#711	938 N. Concrete	939 N. Old Manor	9-5-47	9-5-47
					98.8	95.8	#704	#712	944 N. Concrete	945 N. Old Manor	9-5-47	9-5-47
5+0	194.0	182.50	10.63		5+60.6	5+57.6	#705	#713	950 N. Concrete	951 N. Old Manor	9-5-47	9-5-47
6+0	193.8	183.0	10.01		6+20.0	6+17.0	#376	#377	956 N. Concrete	957 N. Old Manor	7-10-47	7-10-47
	194.4	183.18	10.47	6+36.2								

LINE #2

LINE 3

2003-00504-212503-909 N Old Manor - Overnight SVC - Preceded by city (insituform lined) 1316' N of MH 0+00 (1+31.6) 2 V45

#16006

3-2-86 Shallow

#1915 - Jap - 821 N. Old Manor - 5-1-47 - Brodie Pelly Co (3+22.5) 10'-6" S of 2+91.7
#1916 - Jap - 827 N. Old Manor - 5-1-47 - Brodie Pelly Co (Bridg) (Wage 251 S of N. Propeline)

CONSTRUCTION RECORD

SERVICE RECORD

STATION	ELEVATION		Depth	MANHOLE	4-INCH "Y" BRANCHES		No. of Permit		House Number		DATE OF PERMITS	
	Ground	Grade			North West	South East	North West	South East	North West	South East	North West	South East
0+0	206.3	192.36	13.98	0+0	0+28.5 89.2	0+25.5 86.2	#15928 #15929 #1448	#15933 #15934 #1398	832 N. Edgemoor 832 N. Edgemoor 832 N. Edgemoor	832 N. Edgemoor 832 N. Edgemoor 832 N. Edgemoor	3-21-86 3-21-86 1-7-48	3-21-86 3-21-86 1-7-48
1+0	206.0	192.46	13.69				#15930 #1449	#15935 #1398	832 N. Edgemoor 832 N. Edgemoor	832 N. Edgemoor 832 N. Edgemoor	11-4-75 1-13-48	3-21-86 1-7-48
2+0	206.0	192.56	13.75		2+10.8 70.8	2+07.8 2+67.8	#15931 #15932 #1449	#15936 #15937 #1396	832 N. Edgemoor 832 N. Edgemoor 832 N. Edgemoor	832 N. Edgemoor 832 N. Edgemoor 832 N. Edgemoor	3-21-86 1-13-48	3-21-86 1-7-48
3+0	205.4	192.66	13.20	2+92.4	3+31.5 92.0	3+28.5 89.0	#15939 #1449	#15943 #15944 #1394	832 N. Edgemoor 832 N. Edgemoor	832 N. Edgemoor 832 N. Edgemoor	3-21-86 1-13-48	3-21-86 3-21-86 1-7-48
4+0	204.9	192.76	12.53		4+51.6	4+48.6	#15940 #1449	#15945 #1393	832 N. Edgemoor 832 N. Edgemoor	832 N. Edgemoor 832 N. Edgemoor	3-21-86 1-13-48	3-21-86 1-7-48
5+0	204.0	192.86	11.51		5+12.4 74.8	5+09.4 71.8	#15941 #1449 #15942 #1449	#15946 #1392 #15947 #1449	832 N. Edgemoor 832 N. Edgemoor 832 N. Edgemoor 832 N. Edgemoor	832 N. Edgemoor 832 N. Edgemoor 832 N. Edgemoor 832 N. Edgemoor	3-21-86 1-13-48 3-21-86 3-21-86	3-21-86 1-7-48 3-21-86 3-21-86
	203.3	192.95	10.71	5+83.7			#1449	#1449				
0+0	206.3	194.00	12.26	0+0	0+71.0	0+68.0	#1056	#1052	902 N. Edgemoor	903 N. Edgemoor	11-3-47	11-3-47
1+0	206.4	194.10	12.95		1+31.5 92.3	1+28.5 1+89.3	#1523 #1524	#1515 #1516	907 N. Edgemoor 907 N. Edgemoor	907 N. Edgemoor 907 N. Edgemoor	1-20-48 1-20-48	1-20-48 1-20-48
2+0	206.5	194.20	12.81		2+52.4	2+49.4	#1525	#1517	920 N. Edgemoor	921 N. Edgemoor	1-20-48	1-20-48
3+0	206.7	194.30	12.91		3+10.2	3+07.2	#1526	#1518	926 N. Edgemoor	927 N. Edgemoor	1-20-48	1-20-48
				3+17.7								
4+0	206.6	194.40	12.69		3+73.4	3+70.4	#1527	#1519	932 N. Edgemoor	933 N. Edgemoor	1-20-48	1-20-48
					4+33.8 94.8	4+30.8 91.8	#1528 #1529	#1520 #1521	938 N. Edgemoor 938 N. Edgemoor	939 N. Edgemoor 939 N. Edgemoor	1-20-48 1-20-48	1-20-48 1-20-48
5+0	206.3	194.50	12.43		5+55.1	5+52.1	#1530	#1522	950 N. Edgemoor	951 N. Edgemoor	1-20-48	1-20-48
6+0	206.2	194.60	12.22		6+12.6	6+09.6	#1170		956 N. Edgemoor		11-21-47	
	206.3	194.64	12.23	6+35.5								
0+0	183.9	176.50	8.82	NEW 0+0								
1+0	185.6	176.80	9.42									
2+0	188.1	177.10	11.27									
3+0	189.5	177.40	12.34									
				3+29.0								
4+0	191.0	183.35	7.14									
5+0	193.5	183.85	9.80									
6+0	196.2	184.35	12.13									
				6+59.0								
7+0	199.7	191.54	8.38						467+32	C46047	857 N. Parkwood	8-2-74
8+0	203.2	191.64	11.94									
9+0	206.4	191.74	15.12									
				9+88.2								
10+0	208.3	191.84	17.11									
11+0	208.0	191.94	16.53									
12+0	207.2	192.04	15.55						to 12+48	C47450	856 N. Parkwood	11-20-74
13+0	206.5	192.14	14.24									
				13+17.5								

LINE #8

LINE #9

LINE #1

2002-00334-2/1/02-915 N Edgemoor - overnight svc - tied back to cove w/domet, 1/45, 4" SCH 40, 17W100

#1053 - 2nd - 957 N. Edgemoor - 11-3-47 - Brodie Pllg Co.
#15932
96-15407-7 #1444 - Tap 826 N. Edgemoor - 1-13-48 - Steele Pllg Co 2+92.4 & 2