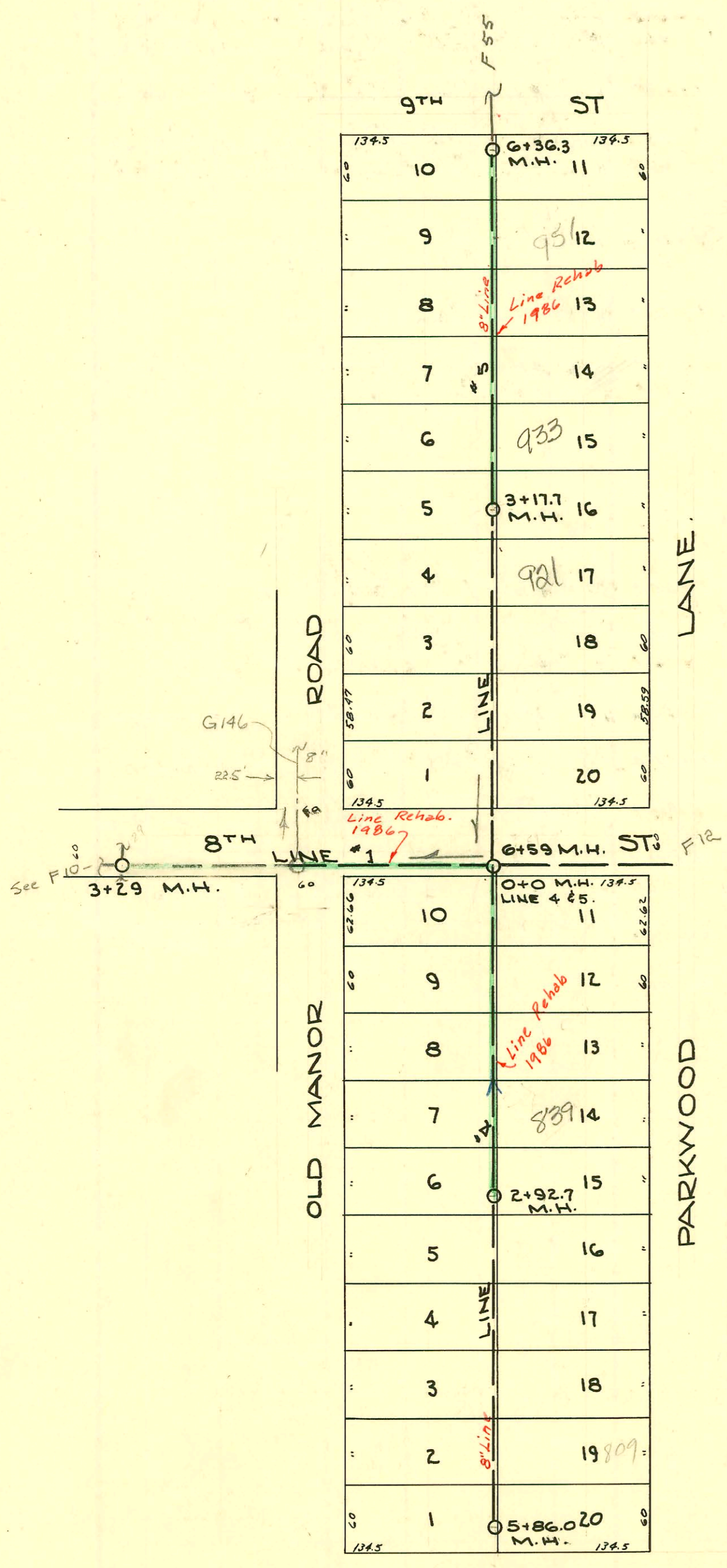


SEWER RECORD

CONSTRUCTION RECORD



LAT. 22 DCS. 55# 12
 W.B. CARTER CONST. Co.
 1948

Lal 22 DCS 55 12
 194

Handwritten note: Mound

CONSTRUCTION RECORD

SERVICE RECORD

STATION	ELEVATION		Depth	MANHOLE	4-INCH "Y" BRANCHES		No. of Permit		House Number		DATE OF PERMITS	
	Ground	Grade			North West	South East	North West	South East	North West	South East	North West	South East
See page 13 For grades on Line 1												
0+0		185.00	13.91	0+0	0+29.4	0+26.4	#427	#570	851 N. Old Manor	857 N. Old Manor	7-17-47	3-21-86
					89.9	86.9	#930	#1051	850 N. Old Manor	857 N. Old Manor	9-5-47	8-11-47
1+0	196.8	185.50	11.91		1+51.2	1+48.2	#575	#952	844 N. Old Manor	845 N. Old Manor	9-5-47	3-21-86
2+0	198.4	186.00	12.60		2+09.2	2+06.2	#728	#1050	832 N. Old Manor	833 N. Old Manor	9-5-47	10-20-47
					68.9	65.9	#513	#1048	832 N. Old Manor	833 N. Old Manor	9-5-47	3-21-86
	200.6	186.96	14.76	2+92.7								
3+0	200.9	189.02	12.38		3+31.0	3+28.0	#726		826 N. Old Manor		9-5-47	
					90.8	87.8	#725		820 N. Old Manor		9-5-47	
4+0	201.8	189.22	13.03		4+51.6	4+48.6	#724		814 N. Old Manor		9-5-47	
5+0	202.5	189.42	13.62		5+13.6	5+10.6	#723	#953	808 N. Old Manor	809 N. Old Manor	9-5-47	7-14-83
					74.9	71.9	#1262	#579	802 N. Old Manor	803 N. Old Manor	12-11-47	10-20-47
	203.0	189.59	13.95	5+86.0								8-11-47
0+0		187.00	11.97	0+0	0+58		C11210		802 N. Old Manor		10-31-68	
					0+73.4	0+70.8	#578	#581	802 N. Old Manor		8-11-47	8-11-47
1+0	200.0	187.50	12.63		1+33.6	1+30.6	#714	#1239	808 N. Old Manor	809 N. Old Manor	9-5-47	10-22-82
					1+93.7	1+90.7	#715	#1240	814 N. Old Manor	815 N. Old Manor	9-5-47	12-8-47
2+0	199.7	188.00	12.04		2+55.4	2+52.4	#716	#1241	820 N. Old Manor	821 N. Old Manor	9-5-47	12-8-47
3+0	203.1	188.50	14.56		3+12.8	3+09.8	#717	#1242	826 N. Old Manor	827 N. Old Manor	9-5-47	12-8-47
				3+17.7								
					77.4	74.4	#5923	#1243	832 N. Old Manor	833 N. Old Manor	9-5-47	3-21-86
4+0	203.1	189.75	13.62		4+38.0	4+35.0	#720	#1244	838 N. Old Manor	839 N. Old Manor	9-5-47	3-21-86
					98.8	95.8	#721	#1245	844 N. Old Manor	845 N. Old Manor	9-5-47	12-8-47
5+0	201.7	189.95	11.99		5+60.0	5+57.0	#722	#1246	850 N. Old Manor	851 N. Old Manor	9-5-47	3-21-86
6+0	203.7	190.15	13.78		6+18.1	6+15.1	#428	#582	851 N. Old Manor	857 N. Old Manor	7-17-47	12-8-47
	200.00	187.50	12.50	6+36.3								

LINE #4

LINE #5

200.00
87.50
12.50

839 Parkwood Rep-2001-00021-14401-Clearwater-4"SCH40-claytile 86' N of MH 2+92.7 (2+06.7) 2-1/2" x 1/4" Tied to claytile Aprx 1" from main

#1057-Inf-827 N. Parkwood-11-3-47-Brodie Pkg. Co.
#954-Inf-815 N. Parkwood-10-20-47-Brodie Pkg. Co.-R 201st N of S Kaplan
#955-Inf-821 N. Parkwood-10-20-47-Brodie Pkg. Co.
C 23582-Extension 808 N. Old Manor-11-3-47