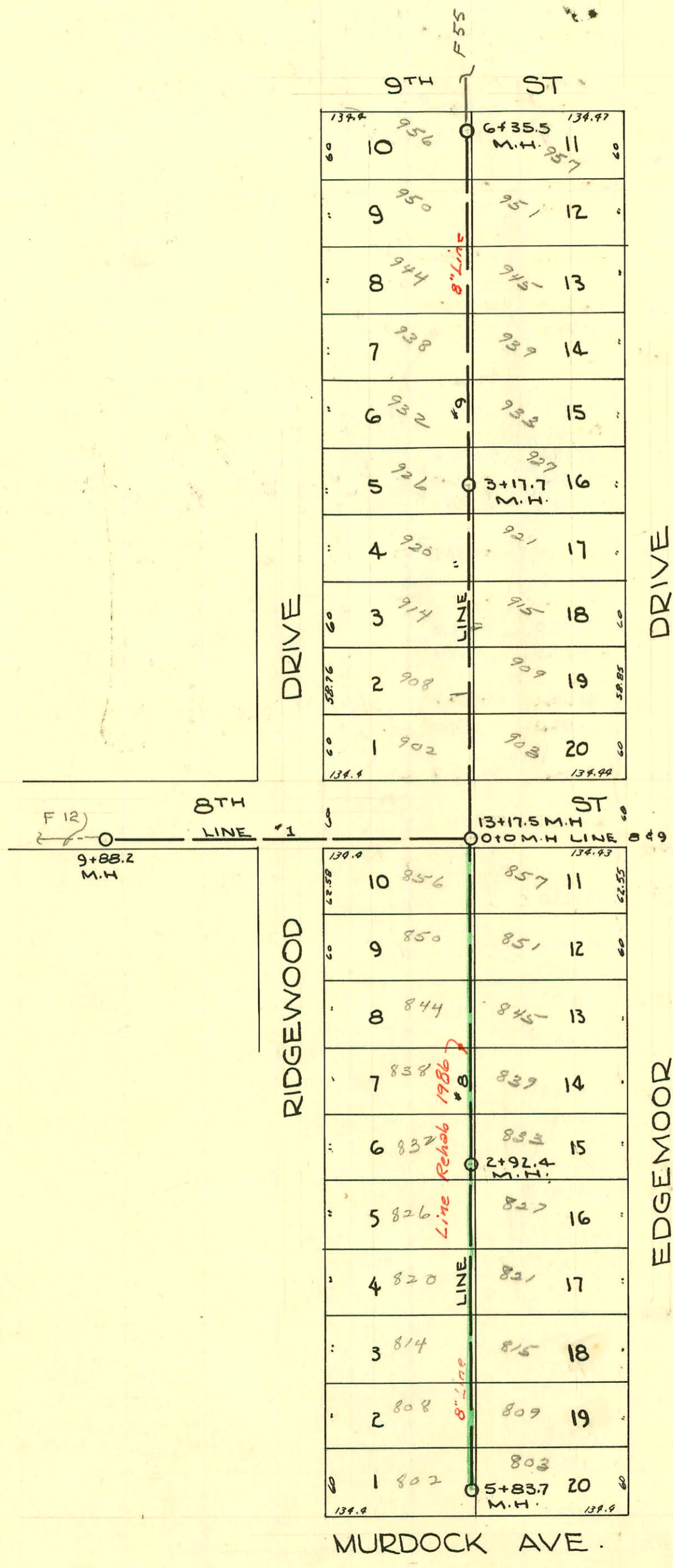


SERVICE RECORD CONSTRUCTION RECORD



LAT. 22 DCS. SS# 12
 W.B. CARTER CONST.
 1946

Lat 22 DCS. SS# 12
 W.B. Carter
 1946

CONSTRUCTION RECORD

SERVICE RECORD

STATION	ELEVATION		Depth	MANHOLE	4-INCH "Y" BRANCHES		No. of Permit		House Number		DATE OF PERMITS	
	Ground	Grade			North West	South East	North West	South East	North West	South East	North West	South East
0+0	206.3	192.36	13.98	0+0	0+28.5	0+25.5	#15928	#15933	857 N. Edgemoor	857 N. Edgemoor	3-21-86	3-21-86
					89.2	86.2	#15929	#15934	857 N. Edgemoor	857 N. Edgemoor	3-21-86	3-21-86
1+0	206.0	192.46	13.69				#15930	#15935	857 N. Edgemoor	857 N. Edgemoor	1-13-48	1-7-48
2+0	206.0	192.56	13.75		2+10.8	2+07.8	#15931	#15936	832 N. Edgemoor	832 N. Edgemoor	3-21-86	3-21-86
					70.8	2+67.8	#15932	#15937	832 N. Edgemoor	832 N. Edgemoor	1-13-48	1-7-48
				2+92.4								
3+0	205.4	192.66	13.20		3+31.5	3+28.5	#15939	#15944	802 N. Edgemoor	802 N. Edgemoor	3-21-86	3-21-86
					92.0	89.0	#15940	#15945	802 N. Edgemoor	802 N. Edgemoor	1-13-48	1-7-48
4+0	204.9	192.76	12.53		4+51.6	4+48.6	#15941	#15946	802 N. Edgemoor	802 N. Edgemoor	3-21-86	3-21-86
					74.8	5+09.4	#15942	#15947	802 N. Edgemoor	802 N. Edgemoor	1-13-48	1-7-48
5+0	204.0	192.86	11.51		5+12.4	5+09.4	#15943	#15948	802 N. Edgemoor	802 N. Edgemoor	3-21-86	3-21-86
					74.8	71.8	#15944	#15949	802 N. Edgemoor	802 N. Edgemoor	1-13-48	1-7-48
	203.3	192.95	10.71	5+83.7								
0+0	206.3	194.00	12.26	0+0	0+71.0	0+68.0	#1056	#1052	902 N. Edgemoor	903 N. Edgemoor	11-3-47	11-3-47
1+0	206.4	194.10	12.95		1+31.5	1+28.5	#1523	#1515	907 N. Edgemoor	909 N. Edgemoor	1-20-48	1-20-48
					92.3	1+89.3	#1524	#1516	907 N. Edgemoor	909 N. Edgemoor	1-20-48	1-20-48
2+0	206.5	194.20	12.81		2+52.4	2+49.4	#1525	#1517	920 N. Edgemoor	921 N. Edgemoor	1-20-48	1-20-48
3+0	206.7	194.30	12.91		3+10.2	3+07.2	#1526	#1518	926 N. Edgemoor	927 N. Edgemoor	1-20-48	1-20-48
				3+17.7								
4+0	206.6	194.40	12.69		3+73.4	3+70.4	#1527	#1519	932 N. Edgemoor	933 N. Edgemoor	1-20-48	1-20-48
					4+33.8	4+30.8	#1528	#1520	938 N. Edgemoor	939 N. Edgemoor	1-20-48	1-20-48
					94.8	91.8	#1529	#1521	944 N. Edgemoor	945 N. Edgemoor	1-20-48	1-20-48
5+0	206.3	194.50	12.43		5+55.1	5+52.1	#1530	#1522	950 N. Edgemoor	951 N. Edgemoor	1-20-48	1-20-48
6+0	206.2	194.60	12.22		6+12.6	6+09.6	#1170		956 N. Edgemoor		11-21-47	
	206.3	194.64	12.23	6+35.5								
0+0	183.9	176.50	8.82	NEW 0+0								
1+0	185.6	176.80	9.42									
2+0	188.1	177.10	11.27									
3+0	189.5	177.40	12.34									
				3+29.0								
4+0	191.0	183.35	7.14									
5+0	193.5	183.85	9.80									
6+0	196.2	184.35	12.13									
				6+59.0								
7+0	199.7	191.54	8.38						859 N. Parkwood			8-2-74
8+0	203.2	191.64	11.94									
9+0	206.4	191.74	15.12									
				9+88.2								
10+0	208.3	191.84	17.11									
11+0	208.0	191.94	16.53									
12+0	207.2	192.04	15.55						856 N. Parkwood			11-20-74
13+0	206.5	192.19	14.24									
				13+17.5								

LINE #8

LINE #9

LINE #1

2002-00334-21702-915 N Edgemoor-overnight svc- tied back to core w/donut; 1145, 4" SCH 40, 1TWIN RO

#1053 - Inf - 957 N. Edgemoor - 11-3-47 - Brooke P.L.L.C.
 96-15107-1-#1444 - Top 826 N. Edgemoor - 1-13-48 - State Poly Co 2192.4 & 2