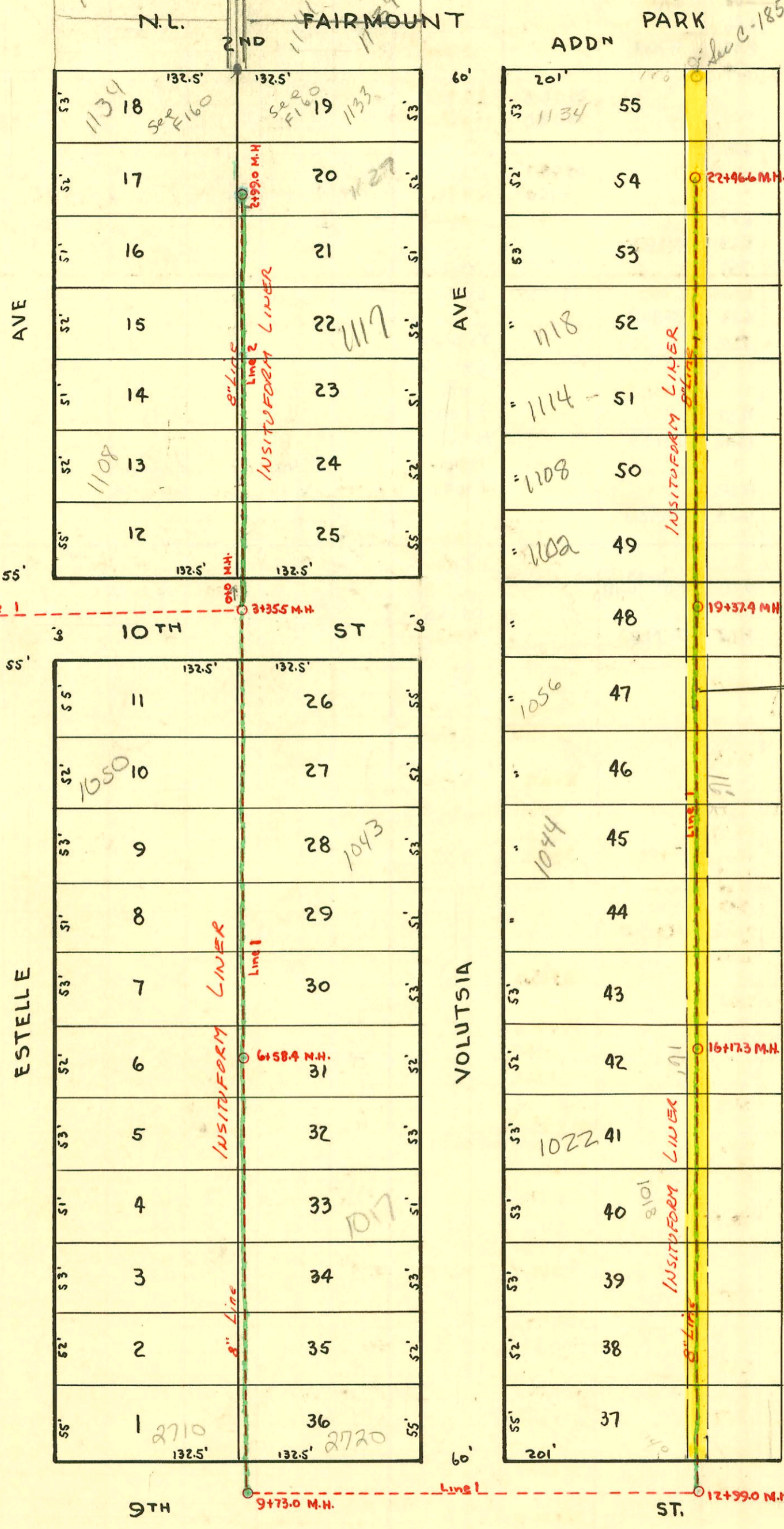


1991 SAN. SEWER RECONST. PART I  
PROJ. No. 468-82140 (630491)  
BUILT BY INSITUFORM PLAINS, INC.



EASEMENT #2249 BEG. AT A POINT (140') EAST OF THE SOUTHWEST CORNER OF LOT 37 FAIRMOUNT PARK 2<sup>ND</sup> ADD<sup>N</sup> TO THE CITY OF WICHITA, SEDGWICK COUNTY, KANSAS THENCE NORTH & PARALLEL TO THE EASTLINE OF VOLUTSIA AVE. AS PLATTED IN SAID F.P. 2<sup>ND</sup> ADD<sup>N</sup> TO A POINT (140') EAST OF THE N.W. CORNER OF LOT 55, FAIRMOUNT PARK 2<sup>ND</sup> ADD<sup>N</sup>.

9' Each Side

1991 SAN. SEWER RECONSTRUCTION PROGRAM PART III  
BUILT BY INSITUFORM PLAINS

2001-01185- 5/15/01- 1108 N Volutsia - Glover Ent-  
4" SCH 40 17WIN CO Tied back to clay tile apx 2' from main

LAT 2 DIST. E S.S. #12  
MARCH 1947 W.B. CARTER

2001-02124 8/27/01 1127 N Volutsia - Jones Sewer: (This permit issued as result of correction notice of 8/17/01 stating that prev. sewer rep caused line to extend all the way into main's bottoms out on back side of main causing an obstruction in main as well as not allowing private line to drain properly)

CONSTRUCTION RECORD

SERVICE RECORD

STATION	ELEVATION		Depth	MANHOLE	4-INCH "Y" BRANCHES		No. of Permit		House Number		DATE OF PERMITS	
	Ground	Grade			North West	South East	North West	South East	North West	South East	North West	South East
Line 2 0+0	130.2	119.70	10.34	0+0 (3+35.5 line)	0+53.4 +895 R	0+50.4 +86.5 R	#1934 #1766	#1766	2704-6 E. 10th	2718-20 E. 10th	5-2-47	4-8-47
1+0		119.80	10.40		1+52.1 R	1+49.1 R +98.0 R	#1936 #1767	#1767	1114 N. Estelle	1113 N. Volusia	5-2-47	4-8-47 1-3-03 4-8-47
2+0	130.1	119.90	9.94		2+01.0 R +51.0 R +96.8 R	2+48.0 R +93.8 R	#1937 #1938 #1939	#1770 #1771	1118 N. Estelle	1121 N. Volusia	5-2-47	4-8-47 2-20-47 4-8-47
2+99.0	129.7	120.00	9.26	2+99.0								
Line 1 0+0	125.0	118.37	6.60	0+0								
1+0	126.1	118.47	7.18									
2+0	127.3	118.57	9.24									
3+0	129.4	118.67	11.57									
3+35.5	129.6 W 129.6 S	118.70 118.90	11.34 10.93	3+35.5								
4+0	128.4	118.97	10.05		3+97.7		#1931		2703-5 E. 10th		5-2-47	
					4+44.0 R	4+00.7 4+41.0 R	#1930	#1765 #1925	1050 N. Estelle	2717-19E - 10th	5-2-47	4-8-47 10-9-48 5-2-47
5+0	127.9	119.07	9.59		5+08.6 R +55.8 R +96.0 R	5+05.6 R +52.8 R +93.0 R	#1929 #1928 #1927	#1764 #1763 #1762	1044 N. Estelle	1043 R N. Volusia	5-2-47	10-1-93 4-8-47 4-8-47 10-4-41 4-8-47
6+0	127.7	119.17	9.39		6+58.4	6+53.5 R	#1926	#1761	1038-30 N. Estelle	1037 N. Volusia	5-2-47	4-8-47
6+58.4	128.3	119.23	9.87	6+58.4	6+75.0							
7+0	129.1	119.27	10.24		7+05.0 +78.0	7+02.0 R +62.9 R	#1926	#1760 #1759	1037 N. Volusia	1027 N. Volusia	5-2-47	4-8-47 4-8-47
8+0	129.6	119.37	11.33		8+11.8 +54.0	8+08.8 R +51.0	#1926	#1758	1038-30 N. Estelle	1037 N. Volusia	5-2-47	4-8-47
9+0	129.3	119.47	10.77		9+73.0	9+08.2						
9+73.0	130.0	119.55	11.09	9+73.0	9+11.2							
10+0	130.0	121.89 121.91	9.08 8.74									
11+0	130.6	122.01	9.19									
12+0	131.8	122.11	10.09	12+99.0								
13+0	132.8	122.32 W 122.52 N	11.12 10.81		13+23.0							
14+0	131.6	122.62	9.41		14+08.0 +44.7 +96.1 R		#1927	#1787	2810 E. 9th		6-4-47	4-8-47 10-16-43 4-8-47
15+0	131.4	122.72	9.04		15+48.3 R		#1927	#1786	2002-02228 #1786	1022 R N. Volusia	8-15-03 4-8-47	
16+0	131.5	122.82	8.99		16+17.3	16+02.4 R +52.0 R	#1927	#1785	1028 N. Volusia	1034 N. Volusia	4-8-47	4-8-47
16+17.3	131.8	123.00	8.96	16+17.3								
17+0	Ditch 130.7 132.1	123.16	8.87		17+04.3 R 17+64.7 R		#1927	#1783 #1781	1040 N. Volusia	1044 E N. Volusia	4-8-47 5-5-47 4-8-47	
18+0	Ditch 130.5 133.2	123.36	9.80		18+17.4 R 18+64.3 R		#1927	#1780 #1779	1050 N. Volusia	105 C E N. Volusia	4-8-47 8-28-40 4-8-47	
19+0	Ditch 130.2 133.1	123.56	9.37		19+22.7 R		#1927	#1778	1050 N. Volusia	1102 R N. Volusia	4-8-47 1-17-02	
19+37.4	133.5	123.64	9.38	19+37.4	19+22.2 R +75.4		#1927	#1777	1108 N. Volusia	1108 R N. Volusia	4-8-47 5-2-47	
20+0	Ditch 130.1 133.6	124.75	7.71		20+22.2 R +80.7		#1927	#1776	1114 R N. Volusia	1114 R N. Volusia	4-8-47 6-10-99 4-8-47	
21+0	Ditch 130.0 133.2	124.85	7.14		21+32.6 R +86.9		#1927	#1774	1118 R N. Volusia	1122 N. Volusia	12-30-94 4-8-47	
22+0	Ditch 129.6 131.9	124.95	5.54		22+42.0		#1927	#1772	10527 N. Volusia	1128 S N. Volusia	3-27-87 4-8-47	
22+46.6	132.2	125.00	5.49	22+46.6			#1927	#1772	1134 N. Volusia		2-6-87	

#136 - 2nd - 2810 E. 9th - 6-4-47 - Simmons Pllg Co.  
 #693 - 2nd - 2720 E. 9th - 9-3-47 - Simmons Pllg Co.  
 #692 - 2nd at 8+55 - 2720 E. 9th - 9-3-47 - Simmons Pllg Co.  
 #1093 - 2nd - 2710 E. 9th - 11-12-47 - Simmons Pllg Co.