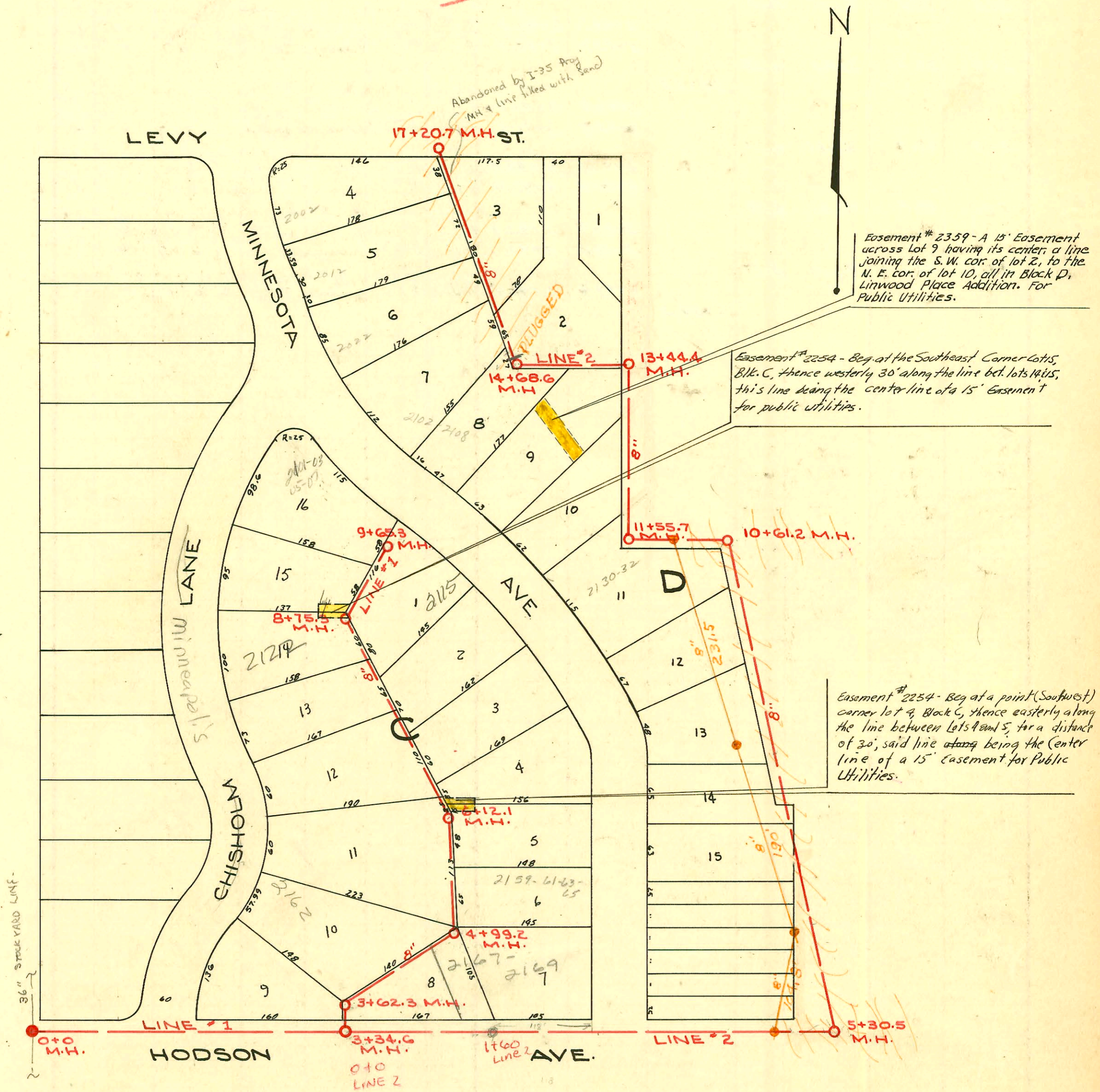


N.B. - 6" 4

TRAP AREA



LAT. X, DIST. B, S.S. # 20  
W.B. Carter Const. Co.  
1947

CHANGES BY STATE HWY DEPT  
BOOKED 8-6-77 AS BUILT PLAN

N.B. - 6" 4

2001-00950 - 41961-2122 N Minneapolis - Overnight - 4" SCH 40 - 6" wye 65' S of MH 8+75 (8+10) Replaced entire line - trap,  
2 stub outs, 2 TWIN CO, 4H 22, 1H 45

- # B 3395 - top - 2102-08 S. Minnesota - Lee Brodie - 5-12-65 (ap 15+35.6)
- SOC 44134 # 991 - Top - 2142-48 S. Minnesota - 10-23-47 } 3-26-74 (10+02.2)
- SOC 44136 # 993 - Top - 2158-48 S. Minnesota - 10-23-47 } 3-26-74 (8+15.7)
- SOC 43590 # 994 - Top - 2166-78 S. Minnesota - 10-23-47 } 2-21-74 (6+96.5)
- # 985 - Top - 2143 S. Minnesota - 10-23-47
- # 987 - Top - 2123 S. Minnesota - 10-23-47 - Wichita Oily Co

CONSTRUCTION RECORD

SERVICE RECORD

STATION	ELEVATION		Depth	MANHOLE	4-INCH "Y" BRANCHES		No. of Permit		House Number		DATE OF PERMITS	
	Ground	Grade			North West	South East	North West	South East	North West	South East	North West	South East
0+0	98.2	89.67	9.49	OLD 0+0								
1+0	98.3	89.77	9.03									
2+0	98.0	89.87	8.48									
3+0	98.5	89.97	9.19									
		89.0 90.00 98.75		3+34.6 3+62.3								
4+0	94.6	90.07	5.42		3+72.6	3+69.6	#62		1902 Hudson			5-23-47
					4+16.5	—	#63		2162 R Hudson		8-8-80 5-23-47	
				4+99.2	—	4+92.6						
5+0	94.3	90.17	5.89									
6+0	97.1	90.27	7.00		5+91.0	5+88.0	#64	#983	2152 Chickadee	2151 S Mannette		5-23-47 10-23-47
				6+12.1								
					—	6+46.2						
7+0	87.8	90.37	10.17		6+83.3	6+80.3	#65	#986	2142 Chickadee	2133 S Mannette		5-23-47 10-23-47
					7+93.3	7+90.3	#66		2132 Chickadee			5-23-47
8+0	93.3	90.47	1.99		8+11.0	8+08.0	#67	#988	see next pg 2122 R Chickadee	2115 S R Mannette	4-19-01 3-23-47	4-20-01 10-23-47
				8+75.3								
9+0	88.95	90.57	10.04		9+06.8	9+34.3	#12		2115 R Mannette			5-11-47 5-10-47
				9+65.3			#11		2151 S Mannette			5-10-47
0+0	97.2	90.21	7.37	3+34.6 Line 2								
1+0	91.8	90.31	1.36									
2+0	97.2	90.41	7.50									
3+0	100.0	90.51	10.08		3+95.0		#939		2180 S Mannette			10-17-47
4+0	99.8	90.61	9.69									
5+0	99.0	90.71	8.74									
6+0	99.7	90.81	9.82		6+01.8	—						
					6+52.3	—						
7+0	100.0	90.91	9.21		7+11.0	—						
					7+66.2	—						
8+0	100.0	91.01	9.34		8+47.2	—						
9+0	99.1	91.11	8.00		9+41.0	—						
10+0	99.3	91.21	8.04		10+44.8	—	#990		2134 S Mannette			10-23-47
				10+61.2								
11+0	98.5	91.31	7.42		11+55.7							
12+0	98.9	91.41	7.37		12+05.7		669980		2130 S Mannette			12-27-78
					12+32.7	—						
13+0	99.2	91.51	7.50		13+44.4							
					13+66.7	13+69.7	#244	#911	SO 1931 E Mannette	2118 S Mannette	2-21-74 6-17-47	10-23-47
14+0	97.6	91.61	6.50		—	14+51.7						
				14+68.6								
					14+88.7		SO C43596 #270		SO 2102-08 Mannette		2-21-74 5-11-65 10-23-47	
15+0	100.3	91.71	0.32		15+44.7		SO C43584 #10		SO 2122 Mannette		2-21-74 5-10-47	
16+0	105.4	91.81	3.93		—	16+12.6	SO C43587 #295		SO 2102 Mannette		2-21-74 5-10-47	2-21-74 6-25-47
					16+48.4	—	SO C44132 #7		SO 2102 Mannette		3-26-74 5-10-47	
					16+59.5	—	SO C44132 #7		SO 2102 Mannette		3-26-74 5-10-47	
17+0	106.4	91.91	4.70						SO 2102 Mannette			
				17+20.7					SO 2102 Mannette			

LINE #1

LINE #2

SO #244 - 2nd - 1921 E. Leary 6-17-47 - Wichita P. Co.  
 2001-333R #982 - 2nd - 2167 S Mannette - 10-23-47 - Wichita P. Co. - 2151 S - overnight - 6" donut 16" wye 13.6' w MH #60 (1+46.4)  
 #984 - 2nd - 2159 S Mannette - 10-23-47 - Wichita P. Co. 5+04.2 - 5955 (main on SPL) Instal trap & TWIN CO  
 #989 - 2nd - 2126 S Mannette - 10-23-47 - Wichita P. Co. 2 kickouts, 2H45, 4X6 Bush  
 #992 - 2nd - 2150 S Mannette - 10-23-47 - Wichita P. Co. 3-26-74 (8+44.2) wye, Fernco to CI at house  
 #648 - 2nd - 2174-76 S Mannette - 8-11-48 - Baker P. Co.