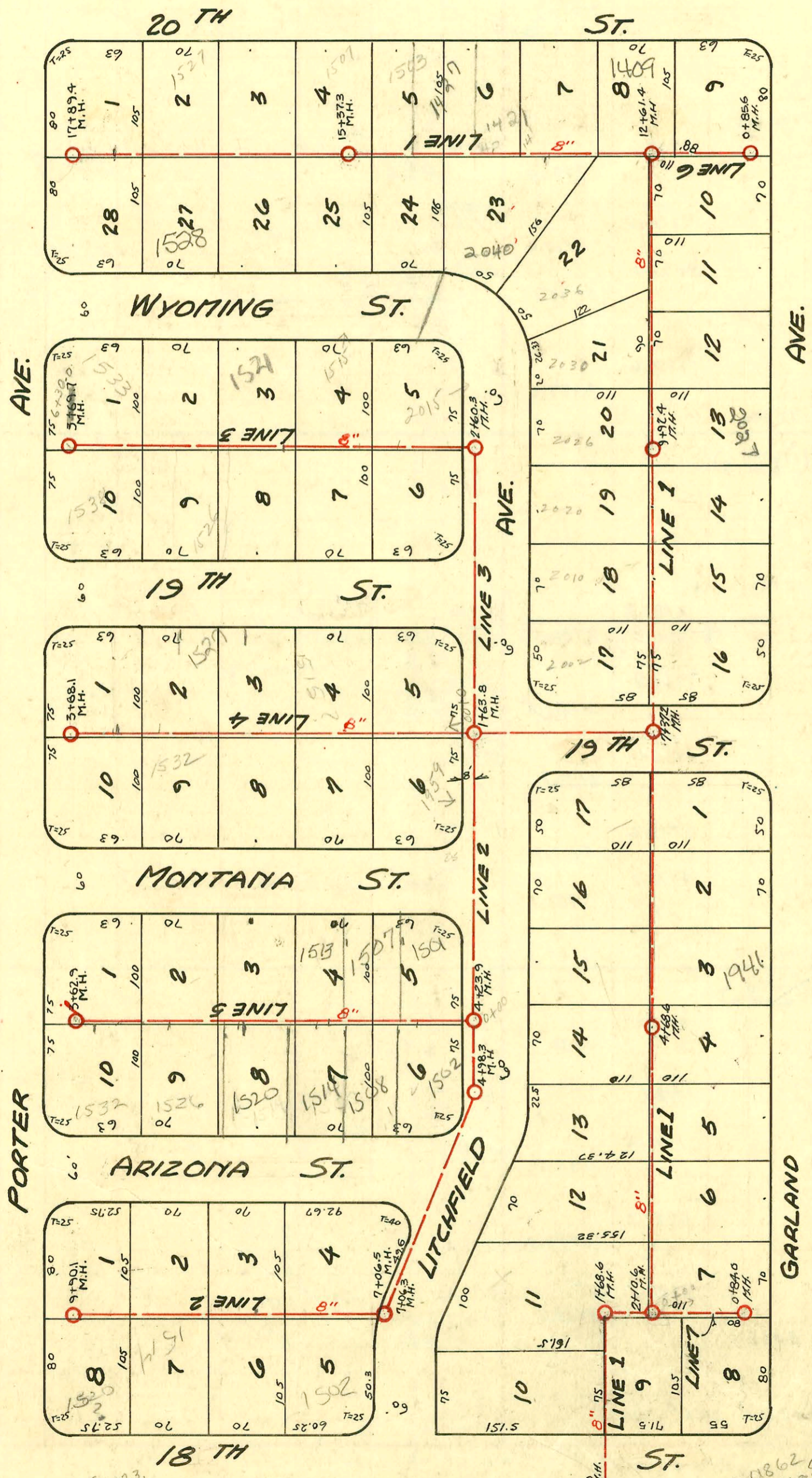


CONSTRUCTION RECORD SERVICE RECORD



1" = 100'



2004-00025-1404-1538 W WYOMING
 Wichita Exc- City Wye repair 4" Predco
 111'E OF MH 17+89.4 (16+78.4) LV33,
 1V45, 2H45, 1 TWIN CO, 1 Fernco,
 shallow - 4" 40 PVC

2002-01306 5/8102 1427 W 20th St N
 AE Henning - Fernco 2' from main,
 Replace opx 15' pipe to existing
 4" 40 PVC (not on record) shallow 4" 40 PVC

LAT. V, DIST. R, S.S. # 20
 W.B. CARTER 1947

- ✓ # 525 - (1514.3) 1507 W. 20th - 6-16-49 - Frederick Pllg Co.
- ✓ # 527 - 24 - 1427 W. 20th - 6-16-49 - Frederick Pllg Co.
- ✓ # 526 - 24 - 1503 W. 20th - 6-16-49 - Frederick Pllg Co.
- ✓ # 528 - 24 - 1421 W. 20th - 6-16-49 - Frederick Pllg Co.
- # 36 - 24 - 1522 Wyoming - 4-19-49 - Betty Clark Pllg Co
- # 2386 - 24 - 1426 W. 18th - 11-9-49 - Chas. U. Baringer
- # 2021 - 24 - 2039 Garland - 8-21-50 - Vaughn Pllg Co

- 2000-0862 CITY REPAIR -
 168' W OF MH 1274.4 (W. 294) TWIN CO, 1V45
 8/21/00
- # 1199 - Top - 2040 Litchfield - Chng Pllg Co. 8-15-49
- # 67 - 24 - 2031 Garland - 3-7-50 - Chng Pllg Co.
- # 4418 - 24 - 1415 W. 20th - 4-20-51 - La Joy Pllg Co. (8/27)
- # 4408 - 24 - 1910 Litchfield - 4-19-51 - Engen Payroll
- # 6377 - 24 - 1408 W. 18th - 11-3-51 - J. E. Landman

CONSTRUCTION RECORD

SERVICE RECORD

STATION	ELEVATION		Depth	MANHOLE	4-INCH "Y" BRANCHES		No. of Permit		House Number		DATE OF PERMITS	
	Ground	Grade			North	South	North West	South East	North West	South East	North West	South East
0+0	123.1	115.34	8.45	0+0 (7+37.2 LINE #2)								
1+00	123.2	115.44	8.18									
2+00	123.2	115.54	7.69	1+63.8								
3+00	123.1	115.64	7.95									
4+00	123.2	115.74	7.87									
5+00	123.5	115.84	8.20	4+23.9 4+98.3								
6+00	123.1	115.94	7.74									
7+00	122.7	116.04	7.23	7+06.5								
8+00	122.7	116.14	7.05		7+38.6	7+91.6	#3894	2 (6604) #1128	1915 Litchfield	1502 W. 18th	2-23-51	11-27-90 8-5-49
9+00	122.1	116.24	6.33		4" PVC 40 8+24.6	8+27.6	72-39777 #776	1515 R Wynona	1508 W. 18th	10-26-92 7-6-49		8-5-49
9+90.1	122.1	116.33	7.21	9+90.1	8+92.1	8+95.1	#1133	134 33 134 32 #1130	1521 Wynona	1514 W. 18th	8-5-49	4-10-85 8-5-49
9+54.6					9+54.6	9+57.6						
9+57.6												
LINE #3	0+00	123.4	8.22	0+0 (1+63.7 LINE 2)								
1+00	124.2	115.80	8.88									
2+00	123.4	115.90	7.75	2+60.3								
3+00	123.4	116.00	7.88		2+83.5	2+86.5	#18144 #715	2015 Litchfield	1502 W. 19th	2-26-70 8-20-48		
4+00	123.6	116.10	8.09		3+29.5	3+67.5	#2354	2015 Litchfield	1502 W. 19th	2-26-70	3-25-49	
5+00	123.0	116.20	7.34		4" PVC 40 3+64.5	4+36.1	#2409	1515 R Wynona	1508 W. 19th	7-7-00 4-6-49		9-25-85 3-25-49
6+00	122.5	116.30	6.65		4+39.1	4+39.1	#2410	1521 R Wynona	1520 W. 19th	7-31-01 4-6-49		
6+30	123.4	116.33	7.66	6+30.0	5+04.2	5+07.2	#717	1527 Litchfield	1526 W. 19th	8-20-48		8-28-63
6+78.7					5+78.7	5+57.0	#716	B-86 1736	1533 W. 19th	8-30-48		11-25-86
6+82.7					5+82.7	5+82.7						
LINE #4	0+00	123.4	8.14	0+0 (1+63.8 LINE 2)								
1+00	123.0	115.80	7.55		0+27.0	0+30	#501	1963 Litchfield	1959 Litchfield	7-29-48		5-24-48
2+00	123.4	115.90	7.90		1+18.1	1+21.1	#2415	1515 R W. 19th	1514 R Montana	4-6-49		3-25-49
3+00	122.4	116.0	6.81		1+82.4	1+85.4	#2414	1521 W. 19th		4-6-49		
3+22.7					2+49.3	2+51.4	#2411	1520 R Montana	1532 Montana	3-25-49		3-25-49
3+25.7					2+52.3	2+89.4	#2411	1539 W. 19th	1535 Montana	1-12-60	7-6-70	
3+25.7					3+22.7	3+25.7	#2411	1539 W. 19th	1535 Montana	4-6-49		12-17-44
3+25.7					3+25.7	3+36.5	#2355	1539 W. 19th	1535 Montana	3-25-49		3-25-49
3+68.1	122.9	116.07	7.29	3+68.1			12841					12-18-84

Continued next sheet

Tap # 2350 - 1526 W. 19th - 3-25-49 - Wichita Plumb (Line 3)
 Tap # 2353 - 1508 W. 19th - 3-25-49 - Wichita Plumb (Line 3)
 Tap # 2358 - 1520 Montana - 3-25-49 - Wichita Plumb (Line 4)
 Tap # 2413 - 1527 W. 19th - 4-6-49 - Wichita Plumb Co.
 Tap # 2356 - 1532 Montana - 3-25-49 - Wichita Plumb Co.
 Tap # 1132 - 1528 W. 18th - 8-5-49 - Wichita Plumb Co.
 Tap # 1135 - 1533 Arizona - 8-5-49 - Wichita Plumb Co.
 Tap # 3184 - 1533 Arizona - 3-30-65 - Richard Turnbull (9+59.1)

98-7117 - Tap - 1520 W. 18th - 8-5-49 - Wichita Plumb Co. (12-26-91)
 # 1134 - Tap - 1527 Arizona - 8-5-49 - Wichita Plumb Co. (8+23.6)
 # 2357 - Tap - 1526 Montana - 3-25-49 - Wichita Plumb Co.
 # 2412 - Tap - 1533 W. 19th - 4-6-49 - Wichita Plumb Co.
 # 2352 - Tap - 1514 W. 19th - 3-25-49 - Wichita Plumb Co. (13+95)
 # 2349 - Tap - 1532 W. 19th - 3-25-49 - Wichita Plumb Co.
 # 2348 - Tap - 1538 W. 19th - 3-25-49 - Wichita Plumb Co. (6+07)
 12216 Tap 1539 W. 19th 1-12-60 Philo Turnshy

CONSTRUCTION RECORD

SERVICE RECORD

STATION	ELEVATION		Depth	MANHOLE	4-INCH "Y" BRANCHES		No. of Permit		House Number		DATE OF PERMITS	
	Ground	Grade			North	South	North West	South East	North West	South East	North West	South East
LINE #5 0+00	123.2	115.96	7.64	(0+00 (4+23.7) 4" x 4")	0+95.7		2000-02429 #318		1507 R Montana	see below 1532 Arizona	11-7-00 5-31-49	
1+00	123.1	116.06	7.50	4" sch 40-40 1+36.3	0+48.7 1+39.3		2002-00343 2000-00948 #319		1513 R Montana	see next pg 1574 Arizona	2-8-02 R 5-31-49 4-24-00 7-6-49	
2+00	122.7	116.16	6.96		2+07.0		#320		1519 Montana	1520 R Arizona	5-31-49 see next pg	12-30-02 7-6-49
3+00	122.1	116.26	6.28		2+76.8 2+98.7	2+79.8	10793 #322 10794		1531 Montana	1532 Arizona	4-26-84 5-31-49	
3+62.9	122.1	116.33	6.32	3+62.9	3+39.6	3+42.6	#323		1537 Montana	1538 Arizona	5-31-49	7-6-49
LINE #6 0+0	129.1	115.66	8.78	0+0 (12+61.4) LINE#1	0+50.8		#1550		2055 Karlson		7-7-50	
LINE #7 0+0	122.3	114.81	7.98	0+0 (2+10.6) LINE#2		0+40.8						
0+84.0	121.9	114.90	7.42	0+84.0								

See sheet 20 for Plan

Rep- 2000-02429- 1507 W MONTANA- "4" 100- Forshee Plog- 4" PVC- ITWIN CO- NOTE TIED TO CLAY TILE- 5' from Main.
 Couldn't go all the way Too much junk in the road

Rep

New Measurement 1+76.9 4" sch 40 (Prep) SWR 2000 01000 4/24/00 1514 W ARIZONA - Wichita Excavation - Itwin Co. and 2-22 V ELLS

- 2002-00365 Inf - #317- 1501 Montana^R - 5-31-49 - Wichita Plog Co. - 211262 - A Good Plog - tied to clay tile wye - ITWIN CO, 31122, 11445
- Inf - #321- 1525 Montana - 5-31-49 - Wichita Plog Co.
- Inf - #771- 1508 Arizona - 7-6-49 - Wichita Plog Co (0+81)
- By Inf - #774- 1532 Arizona - 7-6-49 - Wichita Plog Co (2+79.9)
- Inf - #773- 1526 Arizona - 7-6-49 - Wichita Plog Co.

SERVICE RECORD

CONSTRUCTION RECORD

2002-00343 2/8/03 1513 W Montana - Wichita Exc - 4" PVC, 1#45, 1-4" CO, tied to claytile wye 136.3' W of 4#45 - shallow

2002-03478-12/30/02- 1526 W Arizona - Asyal Pkg - 4" PVC, Fernco to clay 18" from main - l wye, 2 Fernco at house
2 TWIN CO, 2 KICKOUTS, 1#45

Shoot 20 for plan.