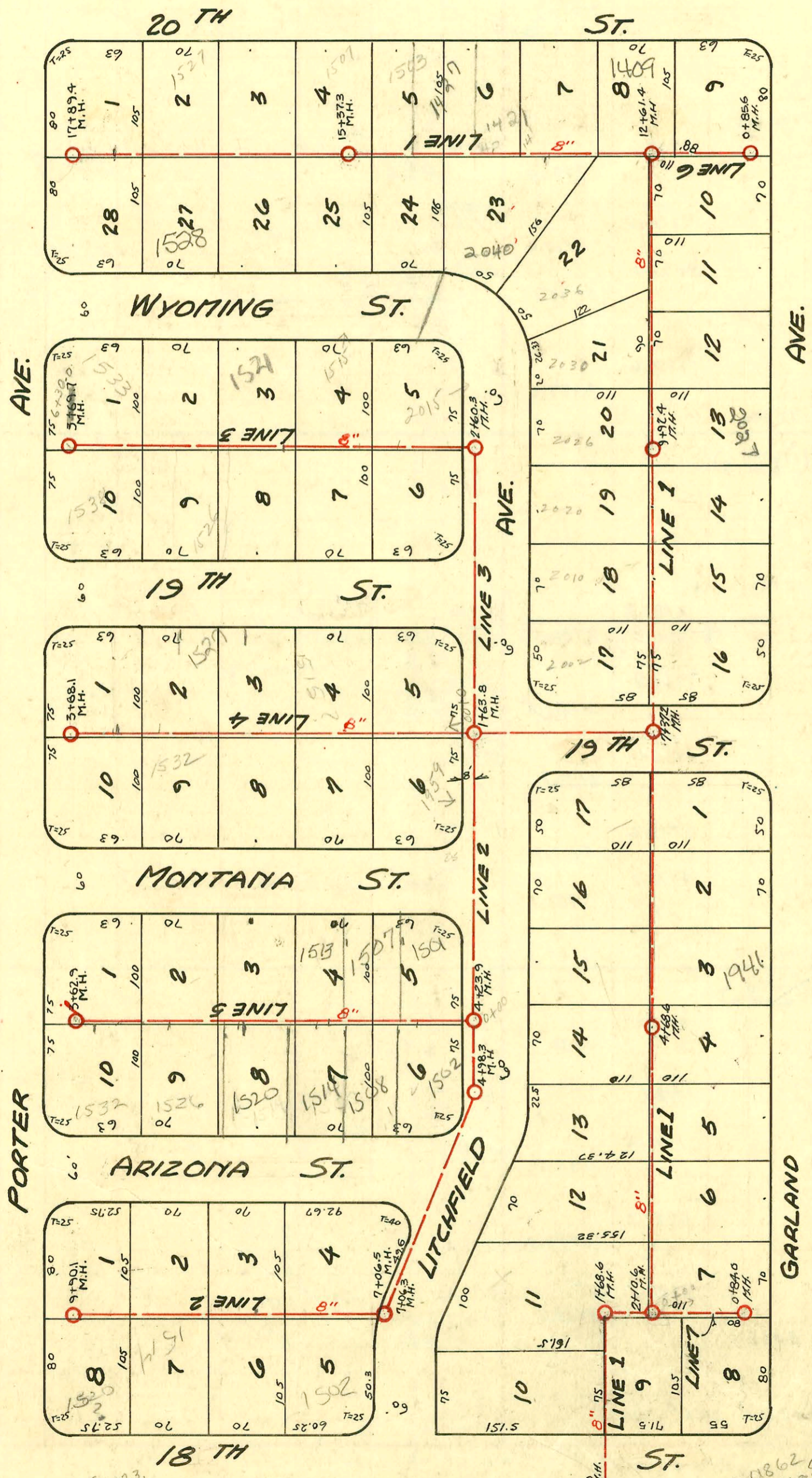


CONSTRUCTION RECORD SERVICE RECORD



1" = 100'



2004-00025-1404-1538 W WYOMING  
 Wichita Exc- City Wye repair 4" Preado  
 111'E OF MH 17+89.4 (16+78.4) LV33,  
 1V45, 2H45, 1 TWIN CO, 1 FERRO,  
 shallow - 4" 40 PVC

2002-01306 5/8102 1427 W 20th St N  
 AE Henning - Ferreo 2' from main,  
 Replace opx 15' pipe to existing  
 4" 40 PVC (not on record) shallow 4" 40 PVC

LAT. V, DIST. R, S.S. # 20  
 W.B. CARTER 1947

- ✓ # 525 - (1514.3) 1507 W. 20th - 6-16-49 - Frederick Pllg Co.
- ✓ # 527 - 24 - 1427 W. 20th - 6-16-49 - Frederick Pllg Co.
- ✓ # 526 - 24 - 1503 W. 20th - 6-16-49 - Frederick Pllg Co.
- ✓ # 528 - 24 - 1421 W. 20th - 6-16-49 - Frederick Pllg Co.
- # 36 - 24 - 1522 Wyoming - 4-19-49 - Betty Clark Pllg Co
- # 2386 - 24 - 1426 W. 18th - 11-9-49 - Chan. U. B. Sarginer
- # 2021 - 24 - 2039 Garland - 8-21-50 - Vaughn Pllg Co

- 2000-0862 CITY REPAIR - 168' W OF MH 1274.4 (W. 294) TWIN CO, 1V45 8/21/00
- # 1199 - Top - 2040 Litchfield - Chng Pllg Co 8-15-49
- # 67 - 24 - 2031 Garland - 3-7-50 - Chng Pllg Co.
- # 4418 - 24 - 1415 W. 20th - 4-20-51 - La Joy Pllg Co. (8/27)
- # 4408 - 24 - 1910 Litchfield - 4-19-51 - Engen Payroll
- # 6377 - 24 - 1408 W. 18th - 11-3-51 - J. E. Landman

CONSTRUCTION RECORD

SERVICE RECORD

STATION	ELEVATION		Depth	MANHOLE	4-INCH "Y" BRANCHES		No. of Permit		House Number		DATE OF PERMITS	
	Ground	Grade			North	South	North West	South East	North West	South East	North West	South East
LINE #5 0+00	123.2	115.96	7.64	(0+00 (4+23.7) 4" x 4")	0+95.7		2000-02429 #318		1507 R Montana	see below 1532 Arizona	11-7-00 5-31-49	
1+00	123.1	116.06	7.50	4" sch 40-40 1+36.3	0+48.7 1+39.3		2002-00343 2000-00948 #319		1513 R Montana	see next pg 1574 Arizona	2-8-02 R 5-31-49 4-24-00 7-6-49	
2+00	122.7	116.16	6.96		2+07.0		#320		1519 Montana	1520 R Arizona	5-31-49 see next pg	12-30-02 7-6-49
3+00	122.1	116.26	6.28		2+76.8 2+98.7	2+79.8	10793 #322 10794		1531 Montana	1532 Arizona	4-26-84 5-31-49	
3+62.9	122.1	116.33	6.32	3+62.9	3+39.6	3+42.6	#323		1537 Montana	1538 Arizona	5-31-49	7-6-49
LINE #6 0+0	129.1	115.66	8.78	0+0 (12+61.4) LINE#1	0+50.8		#1550		2055 Karlson		7-7-50	
LINE #7 0+0	122.3	114.81	7.98	0+0 (2+10.6) LINE#2		0+40.8						
0+84.0	121.9	114.90	7.42	0+84.0								

See sheet 20 for Plan

Rep- 2000-02429- 1507 W MONTANA- "4" 100- Forshee Plog- 4" PVC- ITWIN CO- NOTE TIED TO CLAY TILE- 5' from Main.  
 Couldn't go all the way Too much junk in the road

Rep

New Measurement 1+76.9 4" sch 40 (Prep) SWR 2000 01000 4/24/00 1514 W ARIZONA - Wichita Excavation - Itwin Co. and 2-22 V ELLS

2002-00365 Inf - #317- 1501 Montana<sup>R</sup> - 5-31-49 - Wichita Plog Co. - 211262 - A Good Plog - tied to clay tile wye - ITWIN CO, 31122, 11445  
 Inf - #321- 1525 Montana - 5-31-49 - Wichita Plog Co.  
 Inf - #771- 1508 Arizona - 7-6-49 - Wichita Plog Co (0+81)  
 B Inf - #774- 1532 Arizona - 7-6-49 - Wichita Plog Co (2+79.9)  
 Inf - #773- 1526 Arizona - 7-6-49 - Wichita Plog Co.

SERVICE RECORD

CONSTRUCTION RECORD

2002-00343 2/8/03 1513 W Montana - Wichita Exc - 4" PVC, 1#45, 1-4" CO, tied to claytile wye 136.3' W of 4#45 - shallow

2002-03478-12/30/02- 1526 W Arizona - Asyal Pkg - 4" PVC, Fernco to clay 18" from main - l wye, 2 Fernco at house  
2 TWIN CO, 2 KICKOUTS, 1#45

Shoot 20 for plan.