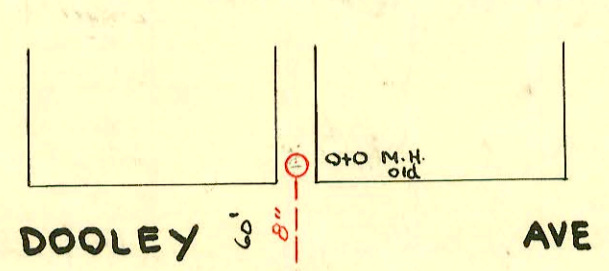


CONSTRUCTION RECORD



DOOLEY AVE

25'	33	130'	2'	130'	34	25'
1402	35				36	
	37				38	
1404	39				40	
	41				42	
1406	43				44	
	45				46	
	47				48	
	49			2487.0 M.H.	50	
	51				52	
	53				54	
1426	55				56	1427
	57				58	
1432	59				60	
	61				62	
1438	63	130'	2'	130'	64	25'

AVE

AVE

FIGG AVE

25'	65	130'	2'	130'	66	25'
1502	67			5453 M.H.	68	
	69				70	
1508	71				72	
	73				74	
	75				76	
	77				78	
	79				80	
	81				82	
	83				84	
	85				86	
1525	87				88	1527
	89				90	
1532	91	130'	2'	130'	92	25'

SEDGWICK

ST. CLAIR

WHEELER HARRY AVE

LAT. 2 DIST. 8 W.B. CARTER

SS # 21 JUNE 1947

CONSTRUCTION RECORD							SERVICE RECORD					
STATION	ELEVATION		Depth	MANHOLE	4-INCH "Y" BRANCHES		No. of Permit		House Number		DATE OF PERMITS	
	Ground	Grade			North West	South East	North West	South East	North West	South East	North West	South East
0+0	107.5	102.22	6.20	0+0 (old)								
					0+86.2	0+83.2	#6738		1402 S. Sedgwick		2-5-68	
1+0	108.5	102.32	6.97		1+09.8	1+06.8	#8205	#2612	1404 S. Sedgwick	1401 S. St. Clair	5-8-68	11-29-49
					+33.5	+30.5	#2697	#1161	1404 S. Sedgwick		6-14-59	
					+64.2	+61.2						
2+0	108.8	102.42	6.61		1+89.3	+86.3	#44547	#5669	1406 S. Sedgwick		12-10-92	
					2+09.6	2+06.6					8-22-51	
					+40.2	+37.2					10-10-53	
					+66.6	+63.6						
					+82.3	+79.3	#5002		1422 S. Sedgwick		7-1-03	3-18-63
2+87.0	108.9	102.51	6.92	2+87.0								
3+0	109.0	102.52	6.76		3+16.4	3+13.4						
					+39.4	+36.4	#5003		1426 S. Sedgwick		6-15-51	6-23-50
					+66.8	+63.8	#3311		1427 S. St. Clair		See Below	2-15-50
					+95.1	+92.1	#5650		1432 S. Sedgwick		8-21-51	
4+0	109.4	102.62	7.12		4+22.9	4+19.9						
					+51.4	+48.4	#288	#5871	1438 S. Sedgwick	1437 S. St. Clair	9-20-51	3-5-54
					+77.2	+74.2						3-5-54
5+0	109.2	102.72	7.20		5+42.4	5+39.4						
					+66.2	+63.2	#377		1507 S. Sedgwick		3-17-52	
5+75.3	108.9	102.80	6.79	5+75.3								
					+88.8	+85.8						
6+0	108.6	102.82	6.14		6+12.2	6+09.2	#378	#2297	1508 S. Sedgwick	1507 S. St. Clair	3-17-52	10-18-54
					+43.9	+40.9	#7001	#1124	1514 S. Sedgwick	1517 S. St. Clair	1-11-52	6-8-54
					+69.8	+66.8						
					+95.8	+92.8	#6832		1520 S. Sedgwick		12-13-51	
7+0	107.4	102.92	4.82		7+18.9	7+15.9						
					+43.5	+40.5						
					+67.9	+64.9	#4651		1524 S. Sedgwick		3-26-53	
					+92.0	+89.0						
8+0	107.0	103.02	4.35		7+92.0	7+92.0						
					8+16.7	8+13.7	#4652	#5769	1527 S. Sedgwick	1527 S. St. Clair	3-26-53	6-8-72
					+37.6	+34.6						7-10-53
					+58.8	+55.8	#3971	#1269	1532 S. Sedgwick	1533 S. St. Clair	2-2-53	6-12-50
8+63.6	107.3	103.09	4.56	8+63.6								

Reconnect 1528 S Sedgwick - SWR2000-00896-BTL-4"SCH40-4" CITY TAP 87' N of MH 8+63.6 (7+76.6) ITWINCO  
 2H22-Dirt alley cut- Replaced entire line - existing co @ house - relocated sewer  
 s/o SWR2001-01446-611201-1528 S Sedgwick - BTL - 4" clay tile line s/o at SPL (No alley cut) (was tied into neighbors sewer)

Repair-2000-01492-1427 S St Clair 623/00-Reddi-Roof: Repl about lower 3' (No Alley) ITWINCO, 2H45

#5831 - 1527 S. Sedgwick - D. Coleman 11-24-76 (7+54.2)  
 #5872 - 1522 S. Sedgwick - D. Coleman 11-22-76 (6+71.1)

#2787 - 2nd - 15-21 S. St. Clair - 10-6-52 - Pray Ben.  
 #3488 - 2nd - 1427 1/2 S. St. Clair - 12-11-52 - Harley Riggs  
 #3971 - Selling wife - 1413 S. St. Clair - 2-2-53 - V.H. Patton - S.O. 36575 - 1-2-73 (1+83)  
 #5005 - 2310 Wheeler - 4-29-53  
 #1787 - 2nd - 1501 S. St. Clair - 6-13-54 - R. La Fay Jr. - 4" sch 40 PVC. - (5+62.0)  
 #1719 - Lehwy - 1423 S. St. Clair - 4-24-57 - at 1501 (2+80.0)