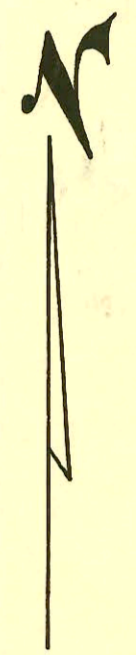
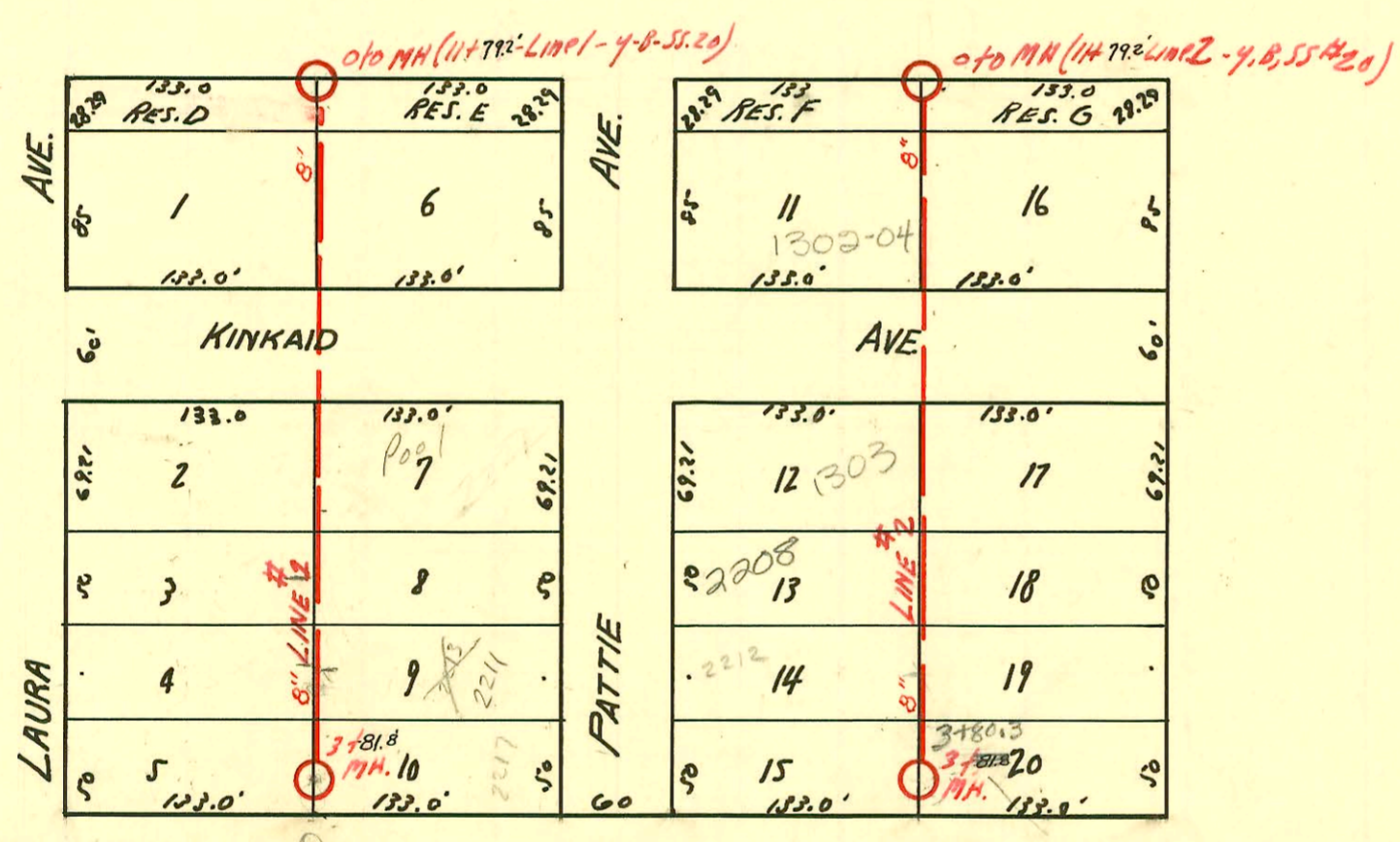


SERVICE RECORD

CONSTRUCTION RECORD

DATE OF SERVICE	TYPE OF SERVICE	NAME OF SERVICE	LOCATION OF SERVICE	DATE OF SERVICE	TYPE OF SERVICE	NAME OF SERVICE	LOCATION OF SERVICE



See F-1016

LAT 2, DIST D, SS#20.
 W.B. CARTER JULY - 1947

CONSTRUCTION RECORD

SERVICE RECORD

Line #1

Line #2

STATION	ELEVATION		Depth	MANHOLE	4-INCH "Y" BRANCHES		No. of Permit		House Number		DATE OF PERMITS	
	Ground	Grade			North West	South East	North West	South East	North West	South East	North West	South East
0+0	101.1	93.75	7.53	0+0 LMP #1 11+722(4,8,5520)								
1+0	101.1	93.87	8.12		+47.4	+44.4	#414	#476	1202 E. Kinbaid	1224 E. Kinbaid	7-14-47	7-22-47
2+0	100.7	93.97	7.15									
					2+28.8	2+25.8	#823	#827	1201 E. Kinbaid	1233 E. Kinbaid	9-30-47	9-30-47
					2+71.6	+68.6	#822	#826	2208 Laura	2207 Katie	9-30-47	9-30-47
3+0	101.1	94.07	7.55									
					3+22.0	3+19.0	#821	#825	2212 Laura	2213 Katie	9-30-47	9-30-47
3+81.8	100.6	94.13	7.00	3+81.8	3+69.0	3+61.0	#820	#824	2218 Laura	2219 Katie	9-30-47	9-30-47
0+0	101.4	93.65	8.22	0+0 LMP #2 11+722(4,8,5520)								
1+0	100.9	93.77	7.87		+63.7	+66.7						
2+0	100.7	93.87	7.65									
					2+240	2+21.0	#877	#878	1313 E. Kinbaid	1315 E. Kinbaid	10-6-47	10-6-47
					4" 40 PUC CO 775.3	+72.3	2002-0251 #876	#10	2209 R. Katie	2209 R. Katie	9-11-02	5-18-48
3+0	101.1	93.97	8.00									
					3+23.5	20.5	#875	#11	2212 Katie	2211 Katie	10-6-47	5-18-48
3+59.5	100.8	94.03	7.16	3+80.3	3+74.8	3+71.8	#874	#12	2218 Katie	2219 Katie	10-6-47	5-18-48

#879 - Inf - 1322 E. Kinbaid - 10-6-47 }
 #880 - Inf - 1302 E. Kinbaid - 10-6-47 } Wichita Oily Co.
 (0+41.8)