

SERVICE RECORD

RESTRICTION RECORD

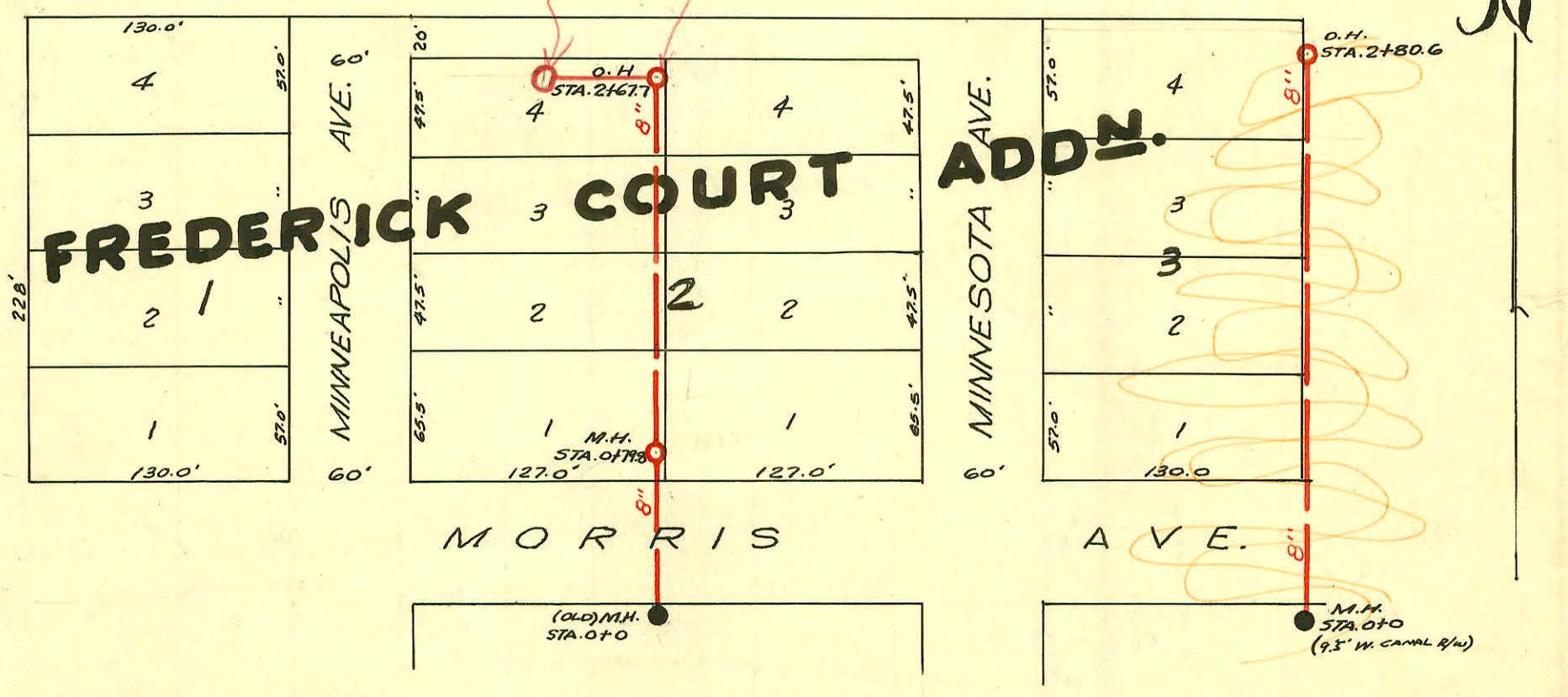
DATE	BY	REASON	REMARKS

B212

Juvenile Court

*Trap Area*

*0+55 New N.H.  
6" stub W.  
4" stub N.  
2+67.7=0+00  
New M.H.*



*This S.S. is a "Private Construction."*

W.B. CARTER  
 Nov. 1947  
 CHANGES BY STATE HWY DEPT  
 BOOKED 8-6-77 AS BUILT PLAN

CONSTRUCTION RECORD

SERVICE RECORD

STATION	ELEVATION		Depth	MANHOLE	4-INCH "Y" BRANCHES		No. of Permit		House Number		DATE OF PERMITS	
	Ground	Grade			North West	South East	North West	South East	North West	South East	North West	South East
0+00	104.98	96.23	8.75	0+00 (OLD M.H.)								
0+79.8	104.6	97.08 out 98.58 in	6.86	0+79.8 (M.H.)	0+73.2		SO C40673 #1150		1020-22-1 Minnesota		8-16-73 11-20-47	
1+00	104.6	98.63	6.56		1+62.5		SO C40677 #1149		1014-16-1 Minnesota		11-20-47	
					1+69.0		C41950 #1157		1013-15-1 Minnesota		7-6-73 11-20-47	10-30-73 11-20-47
					1+88.0		C39904 #1148		1108-10-1 Minnesota		7-6-73 11-20-47	
2+00	103.9	98.83	5.63		2+02.7		C39903 #1147		1002-04-1 Minnesota		7-6-73 11-20-47	
					2+57.1				1900 E. Morris			7-7-77
2+67.7	103.6	98.97	5.18	2+67.7 (O.H.)	2+62.9		061928					

# Line 1

0+00	105.0	99.50	8.99	0+00 (OLD M.H.)	0+86.2		SO C22226 #1154		1020-22-1 Minnesota		12-16-70 11-20-47	
1+00	102.9	99.70	4.05		1+61.4		SO C22225 #1153		1014-16-1 Minnesota		12-16-70 11-20-47	
2+00	103.9	99.90	4.74		2+03.1		SO C22224 #1151		1008-10-1 Minnesota	1010	12-16-70 11-20-47	
		100.07	4.89		2+76.7		SO C22223 #1151		1002-04-1 Minnesota	1002-03	12-16-70 11-20-47	
2+80.6	104.4			2+80.6 (O.H.)								

# Line 2

Private Contract

0+00	103.6	98.97	5.2	0+00	6" 40 PUC TRAP		2002-02066 C44148		1900 E. R. Morris	See Below	7-31-02 3-26-74	
0+55		99.14		0+55	6" 5+46 W. 4" 5+46 N.		C44149		1900 E. Morris		3-26-74	

SWR 2002-02066 7/31/02 1900 E MORRIS (AKA 881 S. Minnesota) Mc Cullough  
6" PUC, Replace house trap, 1 dir clo

SO C41961 - 1922 E. Morris sealed together  
1021 S. Minnesota - C.P. Rutledge - 10-30-73 (sealed in M.H. # 0+79.8)

SO C40672 # 1156 - 2nd - 1007-9 S. Minnesota - 11-20-47 - Frederick P. Co. 8-16-73  
SO C41955 # 1983 - 2nd - 1001 S. Minnesota - 2-23-49 - Frederick P. Co. - 10-30-73 Rutledge