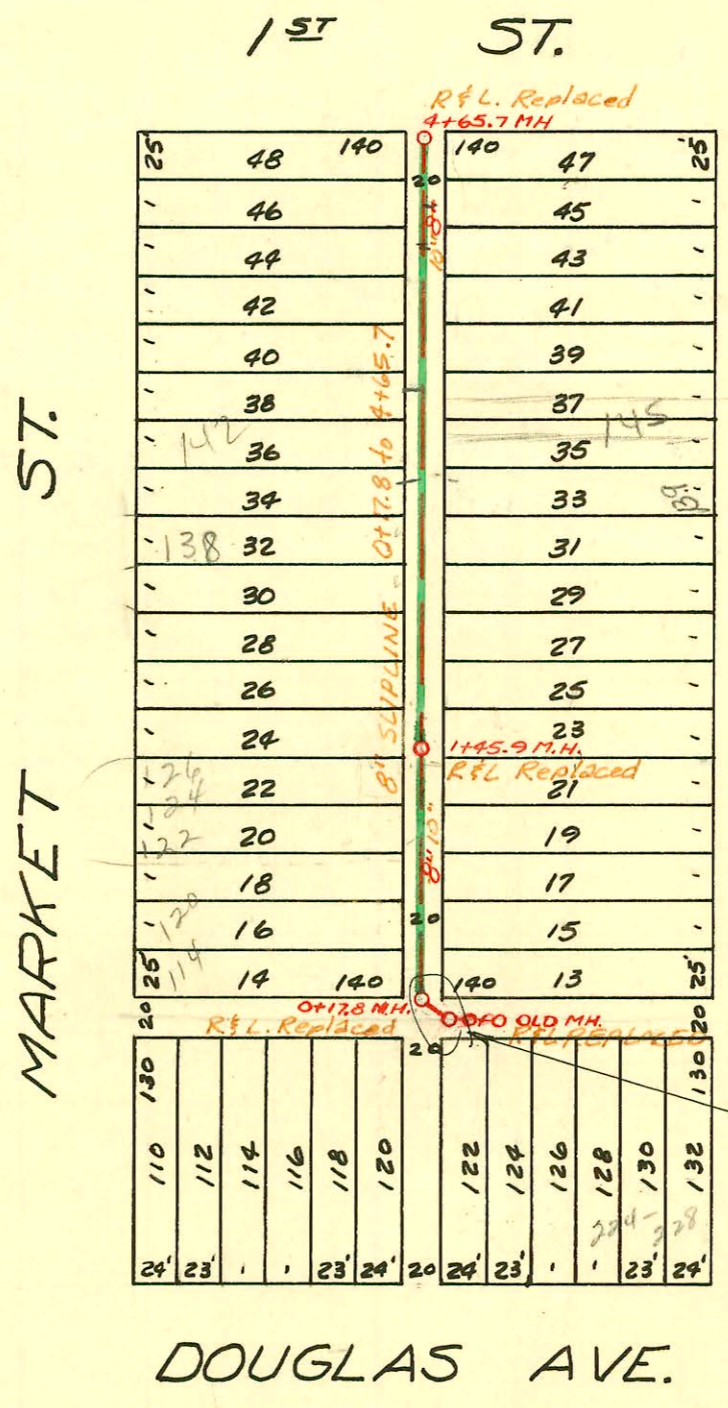


- 4+29.2 6" Service West 8-7-84
- 3+89.7 6" Service West 8-7-84
- 3+58.2 6" Service West 8-7-84
- 3+48.7 6" Service East 8-7-84
- 3+00.0 6" Service West 8-8-84
- 2+89 6" Service West 8-8-84
- 2+40 6" Service West 8-8-84
- 2+87 6" Service East 8-9-84
- 2+19 6" Service West 8-9-84
- 1+64 6" Service West 8-13-84
- 0+65.6 6" Service West 8-13-84

CONSTRUCTION RECORD



Note: All connections must be trapped.  
New traps were installed on old connections.



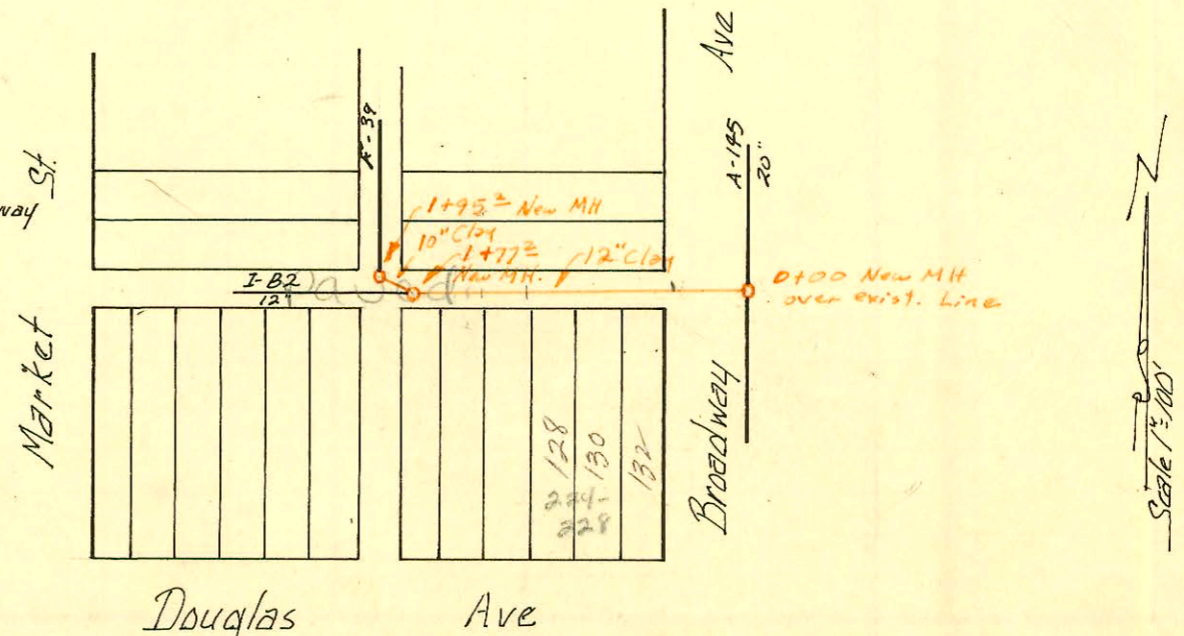
TRAP AREA  
 old line  
 see Rk A - p. 143.

**BROADWAY**  
 Sewer Rehab. & Mosley Relief Sewer  
 Dist 1 & 20 North of Douglas  
 468-80-990-80271-000-000-001  
 Built By Stannard Const.  
 Booked 7-25-85 from As Built

A-143  
 M.H.'s & Line replaced  
 0+178 to 0+00  
 abandoned  
 see sewer below

RECONST. OF A LAT. S.S. #1  
 W.B. CARTER NOV. 1947

Rebuilding & Reconst. portion of  
 W. Sub B 55#1 N of Douglas W. of Broadway  
 Built by: Utility Cont. Inc.  
 Booked 2-22-74 from IH-80  
 Proj. No. DBKL572019



SWR2006-00691 - 142 N Market. (4)45V, (1)22H, (1)40V, replace trap - 3-15-06 Benjamin Franklin

CONSTRUCTION RECORD							SERVICE RECORD					
STATION	ELEVATION		Depth	MANHOLE	4-INCH "Y" BRANCHES		No. of Permit		House Number		DATE OF PERMITS	
	Ground	Grade			North West	South East	North West	South East	North West	South East	North West	South East
0+0	111.36	105.12	6.24	0+0 0+17.8								
					4" 0+39.2							
					6" 0+41.7							
					6" 0+66.2							
					6" 0+91.0							
1+0	111.26	105.22	6.04									
					4" 1+18.4	6" Not Conn. 1+12.5						
					6" 1+40.7	6" 1+39.2	67147		122-124-176 N. Mt.		3-4-68	
				1+45.9	6" 1+65.2							
					6" 1+67.3							
					6" 1+86.5							
						6" 1+88.7						
2+0	111.41	105.32	6.09									
					6" 2+13.4							
					6" 2+16.4							
					6" 2+19.6							
					6" 2+40.1	6" 2+38.4	64201		1307 Market		11-28-77	
					6" 2+41.6	6" 2+39.5	2092		138 N. 9140 Market 510		1-23-68	
					6" Y St. Up Not Conn. 2+47.2	6" Not Conn. 2+47.2						
					6" 2+64.8	6" 2+62.7						
					6" 2+89.7	6" 2+87.1						
					6" 2+97.6							
3+0	111.21	105.42	5.79									
					6" 3+26.8	6" 3+23.5						
					6" 3+59.3	6" 3+63.8						
					6" 3+72.4	6" 3+69.2						
					6" 3+94.5	6" 3+88.3						
4+0	111.31	105.52	5.79									
					6" 4+11.5	6" 4+6.3						
					6" 4+29.5	6" 4+24.9	4825587		160 N. 1st Market		9-21-93	
4+65.7	111.08	105.59	5.49	4+65.7								
Reconst portion of W. Sub B, SS #1 N. of Douglas W. of Broadway												
0+00	111.0	104.97	6.0	0+00								
					0+54.06							
1+00	111.5	105.12	6.4	1+00	0+43.5							
					1+03.5		6862		254-38 E. Douglas		10-29-82	
				1+77 <sup>2</sup> MH	1+19.2		17876		Blumy		2-6-74	
				1+95 <sup>2</sup>	1+56.5		044172		222 E. 5th		11-25-66	
					1+47.7		17374		218 W. 4th		3/28/74	
					1+60.5		044201		Douglas 510		11-25-66	
									Douglas 510		3/29/74	

SOC 35585 - 135-37 N. Broadway - Al Henning 10/25/72 (1+94.8)  
 SOC 35586 - 131-33 N. Broadway - " (1+89.6)  
 #17375 - 220 E. Douglas 510 - Al Henning 11-25-86 1+42.2 5/0  
 #1520 11/20/91 139 N. Broadway - Kelli Root - (1+45.9) top 136' N (2+81.9)