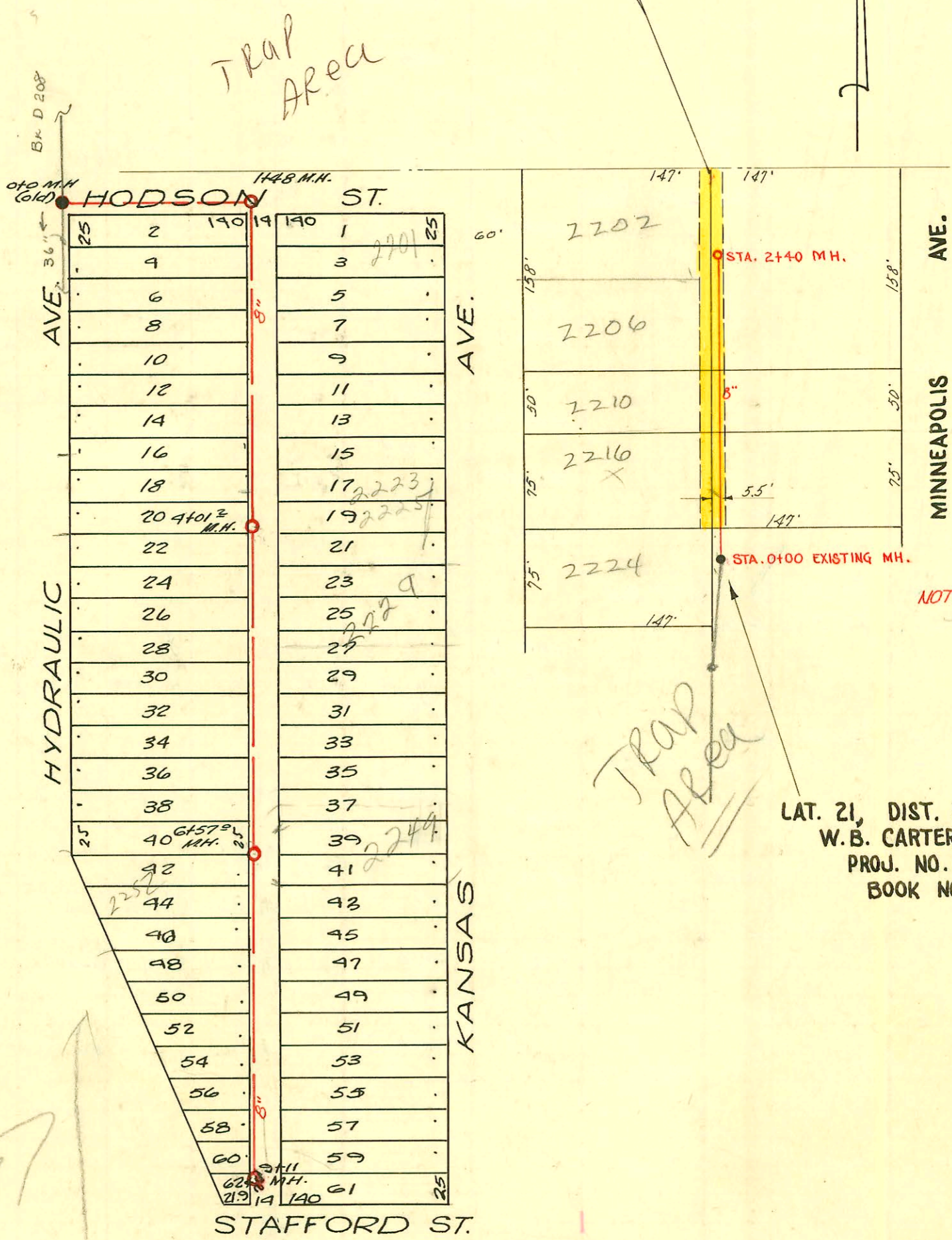


EASEMENT # 2489, Made May 24, 1951, By Anna Steel, a widow. A 16' sewer easement located over and across the following described tract: Beginning 990' S. and 390' E. of N.W. corner of S.W. 1/4 Sec. 34, T. 27 S., R. 1 E., thence South 208', thence E. 330', thence South to a point 1,452.3' S. of N. line of S.W. 1/4, thence E. to creek, N. along creek to a point E. of beginning, thence W. to place of beginning. Easement begins at a point 133' E. of N.W. corner of above-described tract, thence S. 158', thence E. 16', thence N. 158' thence W. to point of beginning.

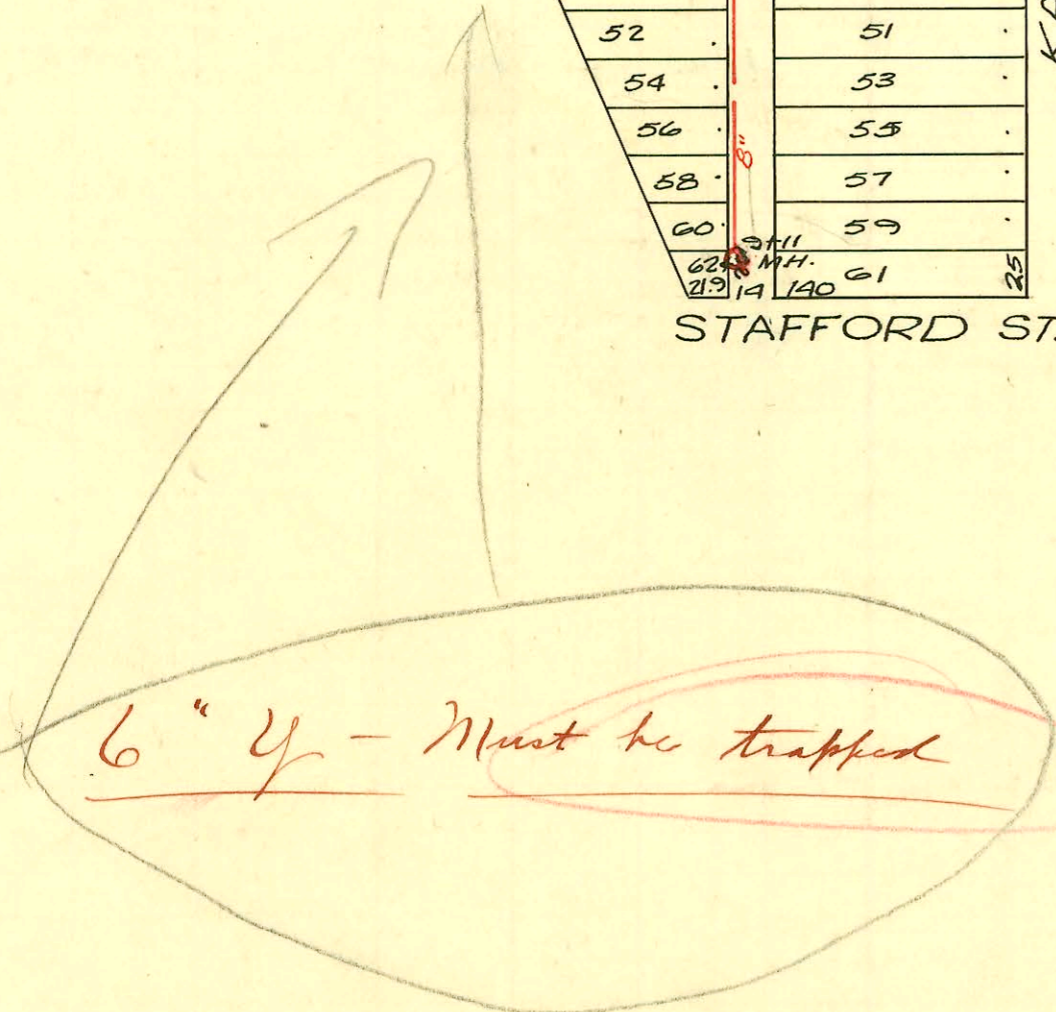
EASEMENT # 2490, Made May 24th, 1951, By Tillman A. Prestwood and Mabel M. Prestwood, his wife. - A 16' easement over and across the following described tract: Beginning 1198' S. and 390' E. of N.W. corner of S.W. 1/4, Sec. 34, T. 27 S., R. 1 E., thence E. 330', thence S. 75', thence W. 330', thence N. to place of beginning. Easement begins at a point 133' east of the N.W. corner of above-described tract, thence S. 75', thence E. 16', thence N. 75', thence W. to the place of beginning.

EASEMENT # 2491, Made May 24, 1951, From Ernest Lewis and Francis Lewis, his wife, and Vera N. Colteaux, a widow. A 16' sewer easement located over and across the following described tract: Beginning 1148' S. and 390' E. of N.W. corner of S.W. 1/4, Sec. 34, T. 27 S., R. 1 E., thence S. 50', thence E. 324', thence N. 50', thence W. to place of beginning. Easement begins at a point 133' E. of the N.W. corner of above-described tract, thence S. 50', thence E. 16', thence N. 50' thence W. to the point of beginning.



NOTE: 4" Y.s must be trapped

LAT. 21, DIST. B, S. S. # 20
 W.B. CARTER 1951
 PROJ. NO. C21-25
 BOOK NO. M-4



W.B. Carter Dec 1947
 Project - Lat 1, Dist. B, Main 20

- Tap - #1372 - 2211 S. Kansas
- Tap - #1373 - 2217 S. Kansas
- Tap - #1374 - 2223 S. Kansas
- Tap - #9273 2229 S. Kansas
- Tap - #1376 - 2235 S. Kansas
- Tap - #1377 - 2241 S. Kansas

Wichita Pllg. Co
 1-5-48 top (10/22)
 1050 R35

- #1285 - Tap - 2259 S. Kansas - 12-13-48 - Wichita Pllg. Co
- #2352 - Tap - 2272 S. Hydraulic - 11-5-49 - Wichita Pllg. Co
- #6227 - Tap - 2201-3 S. Minneapolis - 10-23-51 - Fredrick Pllg. Co
- #928 - Tap - 2215-17 S. Minneapolis - 4-17-52 - Fredrick Pllg. Co
- #2938 - Tap - 2210 S. Kansas - 10-31-57 - Pllg. Co

CONSTRUCTION RECORD

SERVICE RECORD

STATION	ELEVATION		Depth	MANHOLE	4-INCH "Y" BRANCHES		No. of Permit		House Number		DATE OF PERMITS	
	Ground	Grade			North West	South-East	North West	South East	North West	South East	North West	South East
0+0	98.3	89.96	6.74	(old) 0+0 M.H.								
1+0	97.4	90.06										
1+48	97.2	90.31 IN 90.11 CUT	7.88 8.08	1+48 M.H.	1+82°	1+64°	#1587	9082	2202 S. Hydraulic	22018 S. Kansas	2-9-48	1-29-59
2+0	97.4	90.36	7.71		2+38°	2+09°	#1590		2205 S. Hydraulic		2-9-48	1-29-59
3+0	98.6	90.46	8.48		3+04°	3+25°	#1591		2210 S. Hydraulic		2-9-48	
					3+67°	3+91°	#1592		2220 S. Hydraulic		2-9-48	
4+0	98.3	90.56	7.92	4+0 M.H.	4+27°	4+51°	#1594		2226 S. Hydraulic		2-9-48	
					4+95°		#1595		2230 S. Hydraulic		2-9-48	
5+0	97.6	90.66	7.95		5+56°	5+80°	#1596		2238 S. Hydraulic		2-9-48	
6+0	97.8	90.76	7.71		6+13°	6+39°	#1597		2244 S. Hydraulic		2-9-48	
6+57°	97.7	90.82	7.84	6+57 M.H.	6+87°		#1598		2252 S. Hydraulic		2-9-48	
7+0	97.7	90.86	7.58		7+61°	7+03°	#1599		2258 S. Hydraulic		2-9-48	
8+0	97.8	90.96	7.78		8+26°	8+86°						
9+0	97.9	91.06	7.82									
9+11	97.7	91.07	7.16	9+11 M.H.								
0+00	98.2	91.28	6.9	0+00 Exist'g M.H.	4" SCH 40 0+49.8	0+40.1	2001-00617 6556	#757	2216 S. Kansas	2219-21 S. Kansas see below	3-20-01 9-21-55	4-3-52
1+00	97.9	91.38	6.5		1+13.0	1+10.0	#7356		2213-15 S. Kansas		1-31-52	
					1+92°	+62.4	#6226		2210 S. Kansas		6-15-51	10-23-51
2+00	98.3	91.48	6.8		2+13.6	2+35	#5078		2202 S. Kansas		6-25-51	
2+40	98.5	91.52	7.00	2+40			#7357		2211-23 S. Kansas			1-31-52

Line I

LAT. 21, DST. B, #20

2001-00617- 3/20/01- ASAP Plug- 4" SCH 40 -Tied in for 2nd Kick-out- ZTWINCO, ZKICKOUTS, 1V45, 1H45 (20x29 Room Addition)

#1283-2nd- 2247-49 S. Kansas - 12-13-47
 #1284-2nd- 2253 S. Kansas - 12-13-47
 #1286-2nd- 2265 S. Kansas - 12-13-47
 #1287-2nd- 2271 S. Kansas - 12-13-47
 } Wichita Pully. Co.
 J. E. Levers.
 #6528-2nd- 2205 S. Kansas - 9-22-55
 #B.514- 2202 S. Kansas - 2K Pully - 12-5-63-top (29' S. of M. H. in Nodan)