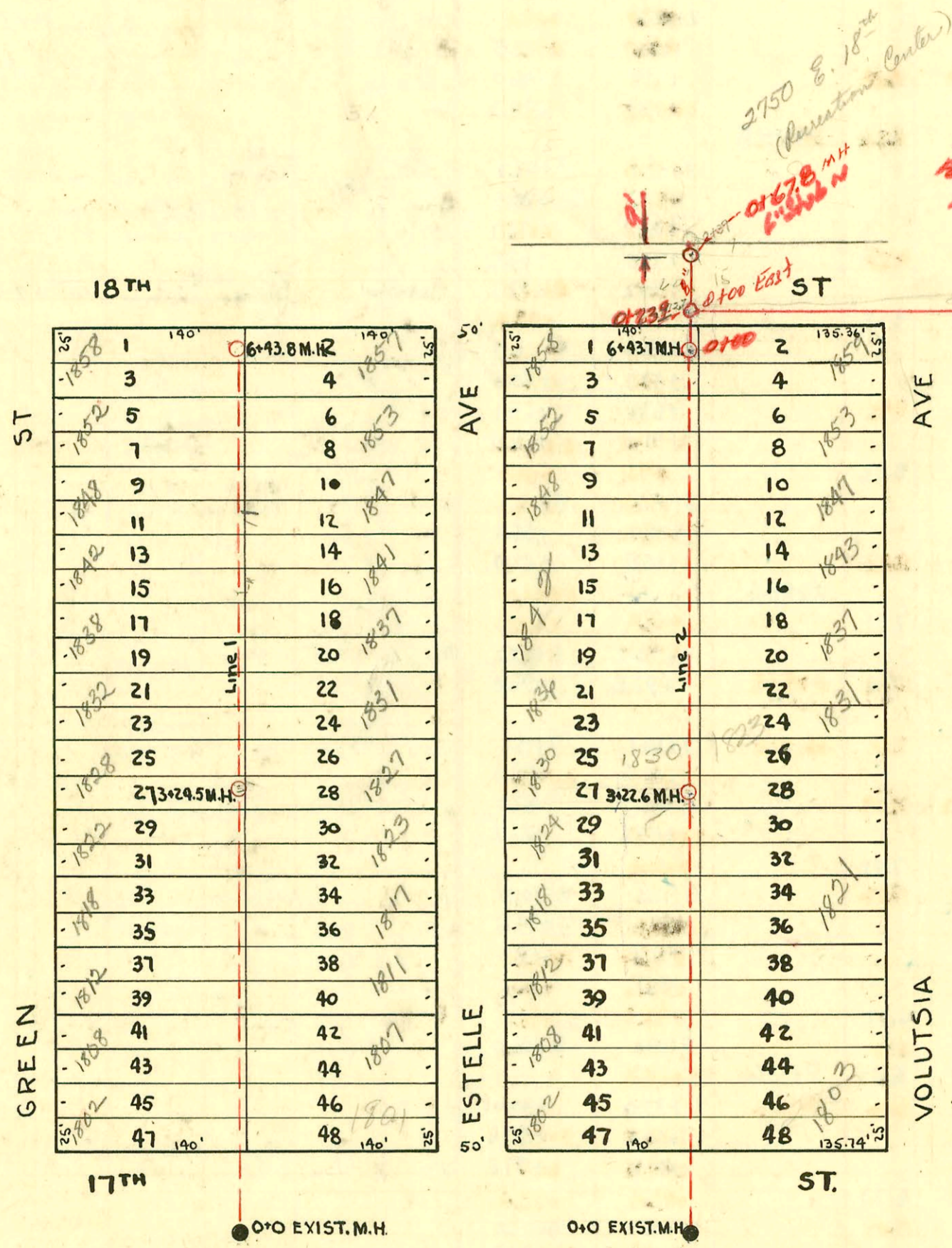


CONSTRUCTION RECORD



2000-00245-2/1/00-1847 N Volutsia - Neal Plog - 4" SCH 40 Predco 127'S of MH lot 43.7 (5+16.7) TWIN CO, 1045

W.B. CARTER 1948
 PROJ. NO. C-27-27 LAT 7 DIST. T 55#12

CONSTRUCTION RECORD

SERVICE RECORD

Line 1

STATION	ELEVATION		Depth	MANHOLE	4-INCH "Y" BRANCHES		No. of Permit		House Number		DATE OF PERMITS	
	Ground	Grade			North West	South East	North West	South East	North West	South East	North West	South East
0+0	132.8	126.39	6.48	old 0+0	0+66.7 +94.1	0+69.7 +97.1	97-5578-7 #2001	#2008	1802 N. Estelle	1807 N. Estelle	4-1-47 4-9-48	4-9-48
1+0	132.8	126.49	6.98		1+20.2 +47.0 +71.4 +98.5	1+23.2 +50.0 +74.4	#2002	#2557	1808 N. Estelle	1807 N. Estelle	4-9-48	6-1-53 11-23-49
							#6030	#2009	1812 N. Estelle	1811 N. Estelle	10-4-50	4-9-48
2+0	133.2	126.59	6.83		2+25.9 +53.1 +80.7	2+01.5 +28.9 +56.1 +83.7	#2003	#2010	1818 N. Estelle	1817 N. Estelle	4-9-48	4-9-48
							#2004	#1453	1822 N. Estelle	1823 N. Estelle	4-9-48	8-30-49
3+0	134.9	126.69	8.28		3+07.5	3+10.5						
3+24.5	135.2	126.71	8.78	3+24.5	+35.0 +59.2 +86.7	+38.0 +62.2 +89.7	#2005	#2011	1828 N. Estelle	1827 N. Estelle	7-2-51	4-9-48
							#2005	#2560	1832 N. Estelle	1831 N. Estelle	4-9-48	7-1-75 11-23-49
4+0	135.7	126.79	9.29		4+11.0 +41.4 +69.5 +93.8	4+14.0 +44.4 +72.5 +96.8	#2006	#2012	1838 N. Estelle	1837 N. Estelle	4-9-48	4-9-48
							#2007	#2561	1842 N. Estelle	1841 N. Estelle	4-9-48	11-23-49
5+0	136.5	126.89	9.91		5+20.2 +47.1 +71.3 +98.6	5+23.2 +50.1 +74.3	#1971	#2013	1848 N. Estelle	1847 N. Estelle	10-10-49	4-9-48
							#10	#2562	1852 N. Estelle	1853 N. Estelle	2-12-52	11-23-49
6+0	138.3	126.99	11.42		6+22.5 +35.2	6+01.6 +25.5 +38.2	#2571	#5287	1858 N. Estelle	1857 N. Estelle	11-25-49	7-12-51
6+43.8	139.3	127.04	12.62	6+43.8								

Line 2

0+0	142.0	134.27	7.19	old 0+0	0+62.1	0+65.1	4695 #2114		1802 N. Estelle		11-17-81 4-16-48	
1+0	146.2	134.37	12.04		1+12.6 +60.8		2050 #2115 #2116		1808 N. Estelle	1810 N. Estelle	12-9-50 4-16-48	
2+0	149.0	134.47	14.56		2+11.8 +47.4 +68.6 +93.3	2+50.4 +71.6 +96.3	4367 #2117		1818 N. Estelle		10-21-51 4-16-48	
3+0	145.7	134.57	11.10		3+14.4		4370 #175		1824 N. Estelle		10-21-51 6-10-48	
3+22.6	134.59	10.30	3+22.6		3+40.7 +64.9 +89.4	3+43.9 +67.9 +92.4	4380 #2118	#2095	1830 N. Estelle	1829 N. Estelle	4-16-48	3-23-65 3-3-49 4-16-48
4+0	143.3	134.67	9.03		4+13.5 +37.4 +61.2 +84.3	4+16.5 +40.4 +64.2 +87.3	#1293	#2122	1836 N. Estelle	1837 N. Estelle	8-22-49	4-16-48
							#3107	#2123	1842 N. Estelle	1843 N. Estelle	11-13-50	4-16-48
5+0	144.0	134.77	8.92		5+15.4 +42.8 +66.6 +91.0	5+18.4 +45.8 +69.6 +94.0	2000 on 265 #2119	#667	1848 N. Estelle	1847 N. Estelle	4-16-48	R see next pg 7-1-2000 5-5-48 3-31-52
							#2120	#2124	1852 N. Estelle	1853 N. Estelle	4-16-48	4-16-48
6+0	146.7	134.87	11.85		6+15.0	6+18.0	#6416		1858 N. Estelle		11-13-51	4-16-48
6+43.7	147.9	134.92	13.15	6+43.7	6+33.1		12604 #2125		1859 N. Estelle		4-16-48	

97-11653-7 7-11-47 AG Neal 1841 NE Estelle

#143 - Tap into m.h. 6+43.7 - 1821 N. Chautauque - East Hill Intermediate School - 3-16-50 - Davidson Pkg. Co.

#6663 tap - 1815 N. Voltaire - Thompson Pkg. 11-30-51

11589 Tap 1817 N. Voltaire - Ray Pkg. 4-29-59 2+87.1

#23594 - 2750 E. 18th - Herb Hoover - 4/5/71 - 6" Stake No. 70+67.8 M.H. Recreation Center

665265 - 2750 E. 18th Pkg. #2 - 3-9-78 (tap into m.h. 0+69.8)