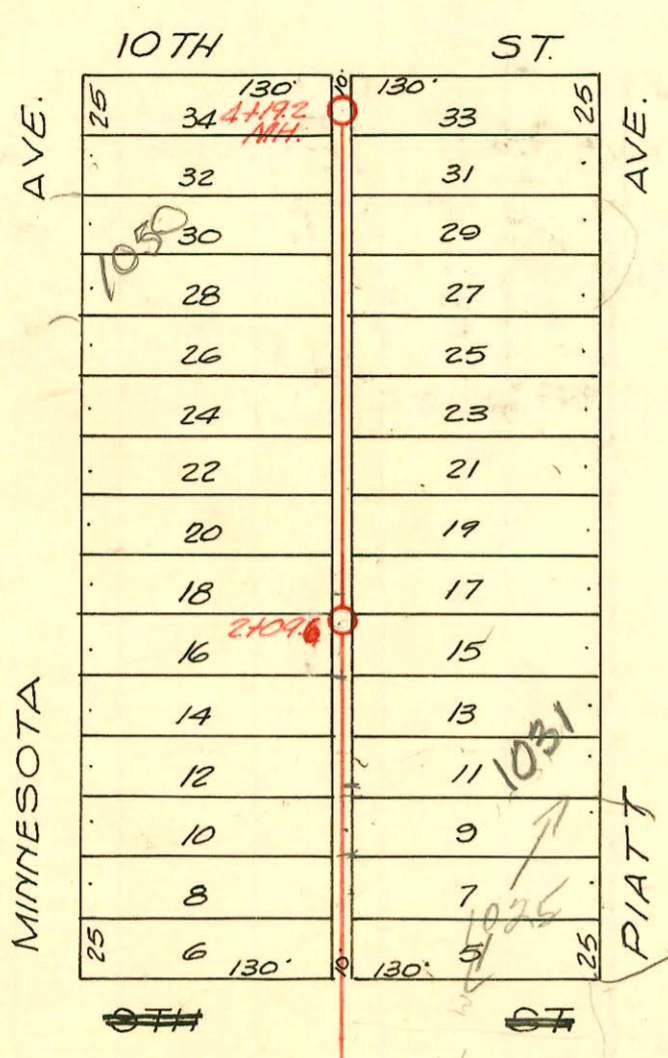


SERVICE RECORD

CONSTRUCTION RECORD

1" = 80'



0 to Existing MH. in Alley North of Ninth St.

Lateral B, District 7, Main 12  
W.B. Carter Const. Proj. No. C27-33

1948

CONSTRUCTION RECORD						SERVICE RECORD						
STATION	ELEVATION		Depth	MANHOLE	4-INCH "Y" BRANCHES		No. of Permit		House Number		DATE OF PERMITS	
	Ground	Grade			West	East	North West	South East	North West	South East	North West	South East
0+0	116.1	107.83	8.93	0+0	+67	+70						
					+91.4	+94.4						
1+0	116.2	107.98	8.79		+15.9	+18.9						
					+34.9	+37.9	#3285	#1982	10307, Minnesota	1025 Platt	2-11-50	7-22-58
					+55.3	+58.3	4" SCD 40		1036 N. Minnesota	1031 Platt		2-23-49
					+86.0	+89.0	#1593	#2012	Minnesota	1035 Platt	11-24-48	10-13-49
2+0												
2+09.6	115.8	108.04	8.34	2+09.6	50.11" S of NPI 2 +19.3	+22.3	#3287		1036/210 Minnesota		4-19-44	
					+40.3	+43.3	#3284	#3013	Minnesota	1041 Platt	2-11-50	10-13-49
					+68.1	+71.1						
					+92.3	+95.3	#3283		104471. Minnesota		2-11-50	
3+0	115.6	108.13	8.40		+11.1	+14.1	#3282	#2014	1047 Platt		6-3-52	10-13-49
					+41.8	+44.8	#3282	#17	1050 71.1. Minnesota	1049 Platt	2-11-50	2-12-52
					+89.4	+92.4	#3281	#2565	Minnesota	1055 Platt	2-11-50	11-25-49
4+0	116.0	108.23	8.12		+11.0	+14.0						
4+19.2	115.7	108.25	7.96	4+19.2								

# 5024 - Inf - 1040 N. Minnesota - 4-30-53 - Brodie P. Co.