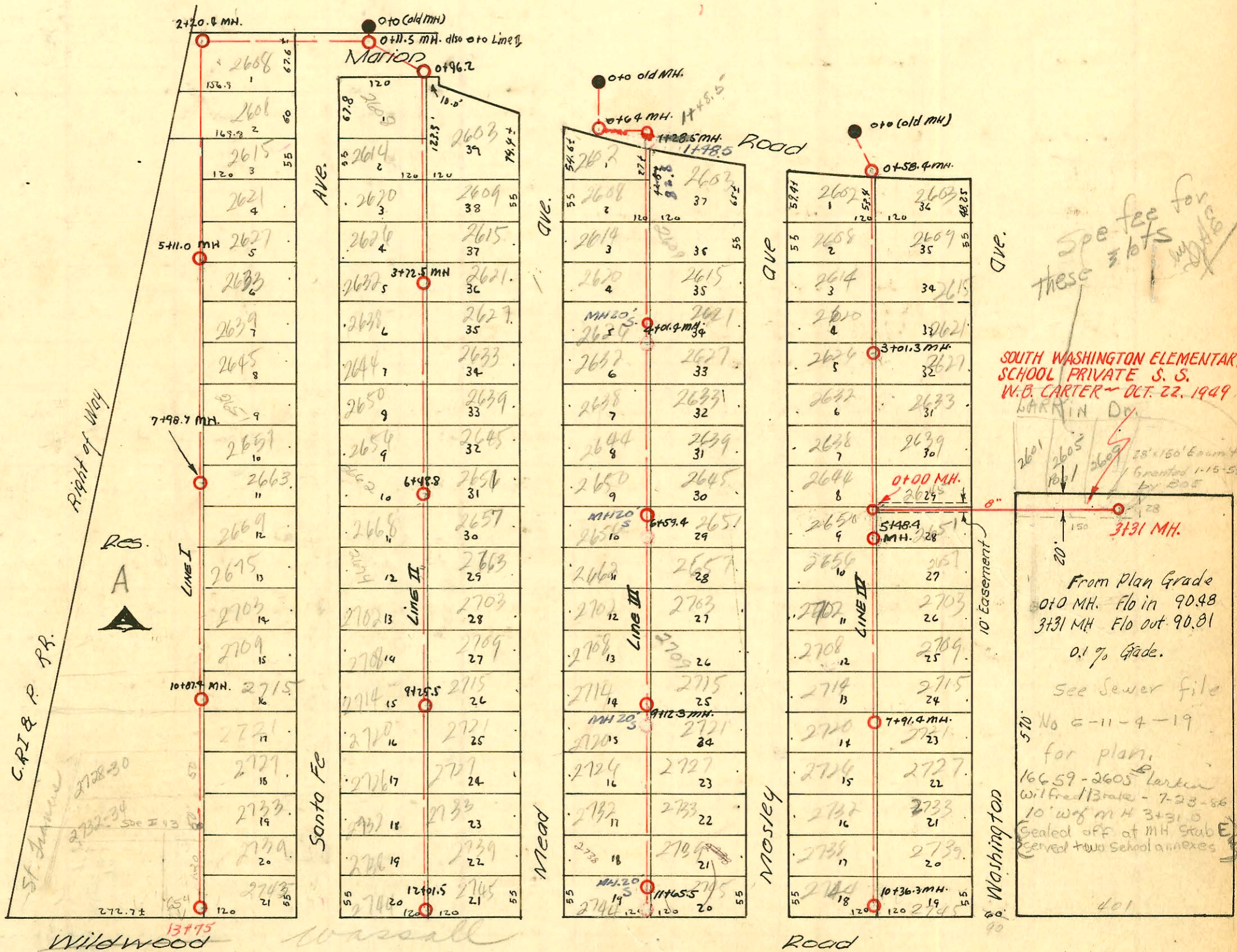


SERVICE RECORD

CONSTRUCTION RECORD

TRAP AREA

1"=150'



- #50 spec fee - Res. #18082 - 2609 Larkin - Smith Pllg 3-27-59
- #1441 - bond vry 2609 Larkin - Smith Pllg - 2-27-59 3+25.5
- #50 spec fee - Res. #29209 - 2601 Larkin Dr. Hadgepath Pllg. 2-20-59
- #11309 - bond vry 2601 Larkin Dr. Hadgepath Pllg. 8-21-59
- #50 spec fee - Res. #10977 - 2605 Larkin - Bradford Smith 10-26-62 W.B. Carter 1948.
- #16291 - tag - 2605 Larkin - Bradford Smith 10-26-62 (3+21)
- #899 - tag 654 W Mead - S.A. Smith Pllg - 9-7-63 (13+60) - See also I-43
- 1999-00248 - 7/23/99 - (2700 S Washington) - Mc Clung - 3/0 73' E of W MH w/concrete 10' S of Main

CONSTRUCTION RECORD

SERVICE RECORD

STATION	ELEVATION		Depth	MANHOLE	4-INCH "Y" BRANCHES		No. of Permit		House Number		DATE OF PERMITS	
	Ground	Grade			North West	South East	North West	South East	North West	South East	North West	South East
0+0		89.95	6.08	0+0								
0+11.5		89.15	5.58	0+11.5								
1+0		89.94										
2+0		90.04	4.70	3.85 out.								
2+20.4		90.29	4.74	2+20.4								
		90.26										
3+0		90.34	5.56			+4.8		#282	2605 J. Santa Fe			6-30-48
						+0.82		#283	2609 J. Santa Fe			6-30-48
						+6.8		#284	2615 J. Santa Fe			6-30-48
4+0		90.44	5.67						2621 J. Santa Fe			6-30-48
						+13.2		#285	2627 J. Santa Fe			6-30-48
						+70.5		#286	2633 J. Santa Fe			6-30-48
5+0		90.54	5.33									
5+11		90.55	5.56	5+11								
						5+27.7		#287	2639 J. Santa Fe			6-30-48
						+84.5		#289	2659 J. Santa Fe			6-30-48
6+0		90.64	5.56									
						+42.8		#290	2675 J. Santa Fe			6-30-48
						+91.0		#291	2651 J. Santa Fe			6-30-48
7+0		90.74	3.52			6186.7		3002	2651 J. Santa Fe			4-3-81
						+80.8		#292	2637 J. Santa Fe			6-30-48
7+98.4		90.84	3.38	7+98.4								
8+0		90.84	3.38									
						+0.5		#293	2663 J. Santa Fe			6-30-48
						+59.0		#294	2669 J. Santa Fe			6-30-48
9+0		90.94	3.66									
						+19.0		#295	2675 J. Santa Fe			6-30-48
						+73.4		#296	2703 J. Santa Fe			6-30-48
10+00		91.04	4.76									
						+30.6		#297	2709 J. Santa Fe			6-30-48
						+81.9		#298	2715 J. Santa Fe			6-30-48
10+87.4		91.12	4.49	10+87.4								
11+00		91.14	4.50									
						+39.0		#299	2721 J. Santa Fe			6-30-48
						+90.5		#300	2727 J. Santa Fe			6-30-48
12+00		91.24	2.84			12+85.4		#301	2733 J. Santa Fe			6-30-48
						(See Bank I-43)		#302	2739 J. Santa Fe			6-30-48
						for 2732+2734		#303	2745 J. Santa Fe			6-30-48
13+0		91.34	1.31									
13+75		91.41	1.19	13+75								
						+55		#303	2745 J. Santa Fe			6-30-48

Line I

Line II

12+01.8 94.8 91.26 3.90 12+01.8

2001-01415-61801-2657 S. Mead - Roberts Drain - 4" SCH40 2 Ferreo, IRWIN CO

CONTINUED ON NEXT PAGE.

16570 2131 - Permit - 2700 S. Washington (School House) 7-2-80 - Sheo Alencar 10-22-49 - W. B. Carter