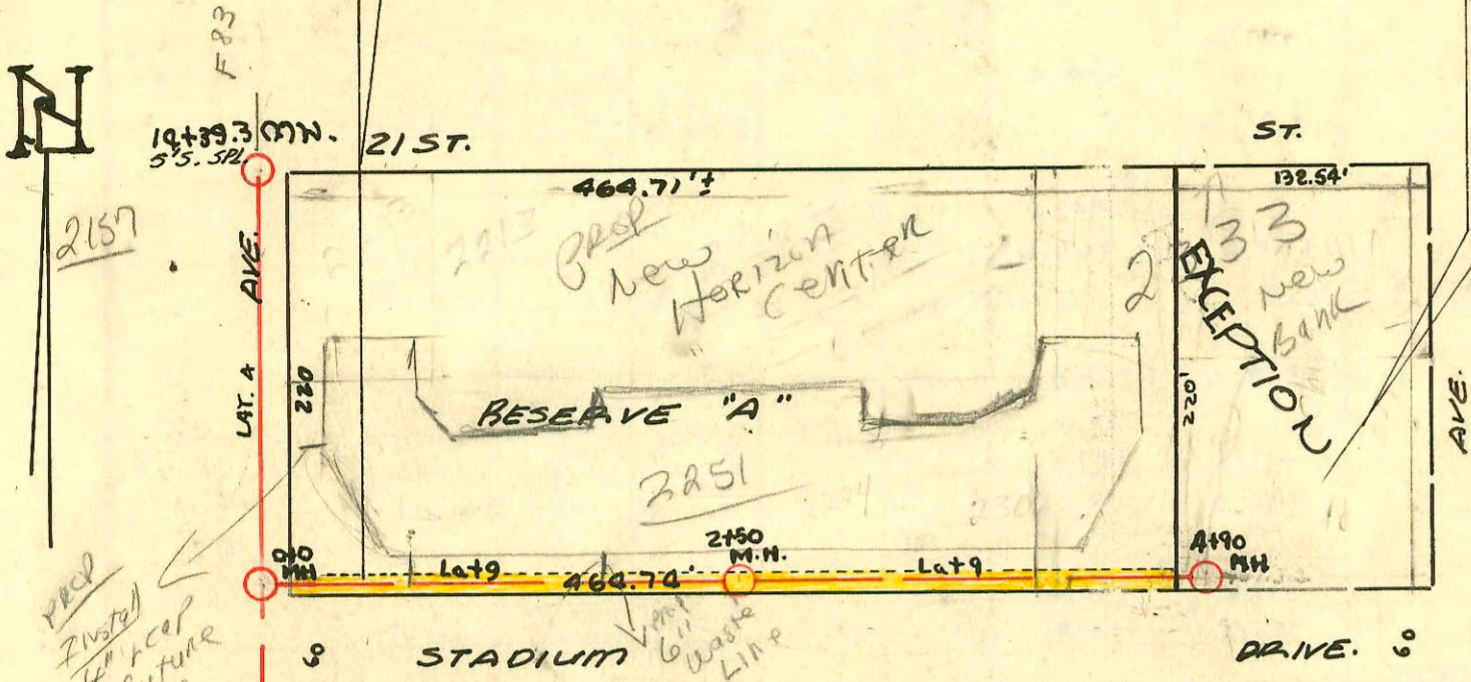


EASEMENT # 2351  
A strip of land ten (10) feet wide adjacent to the south line of Reserve A, Builders First Addition.

EASEMENT # 2352 Made this 24th day of March, 1949, From Joint Board of Christian Churches; Beginning at the Northeast corner of the Northeast Quarter of the Northwest Quarter (NE 1/4 of NW 1/4 of Section 10, Township 27 South of Range 1 East of the 6th P.M., thence running West along the North line of said Section 10 for a distance of 167.54 feet, thence South 260 feet, thence East 167.54 feet, to the East line of said NE 1/4 of NW 1/4 of said section 10, thence North 260 feet to the place of beginning, containing one acre more or less, in Sedgwick County, Kansas.



Prop  
Install  
at future  
excav  
21st

57.31	50	55	58	55	50	53	55	50	60
2201	2207	2219	2219	2223	2229	2241	2260	2319	2323
1	2	3	4	5	6	7	8	9	10
105	105	LINE 1C		2492 MH		Lot 4		5492	
116	116	12	13	14	15	16	17	18	19
2202	2208	2214	2220	2224	2230	2236	2242	2248	2254
57.35	50	55	58	55	50	53	55	50	60

57.36	50	55	58	55	50	53	55	50	60
2201	2207	2219	2219	2223	2229	2241	2260	2319	2323
1	2	3	4	5	6	7	8	9	10
105	105	LINE 1B		2492 MH		Lot 4		5492	
116	116	12	13	14	15	16	17	18	19
2202	2208	2214	2220	2224	2230	2236	2242	2248	2254
57.39	50	55	58	55	50	53	55	50	60

58.41	50	55	58	55	50	53	55	50	60
2201	2207	2219	2219	2223	2229	2241	2260	2319	2323
1	2	3	4	5	6	7	8	9	10
110	110	LINE 1A		2492 MH		Lot 4		5492	
116	116	12	13	14	15	16	17	18	19
2202	2208	2214	2220	2224	2230	2236	2242	2248	2254
58.45	50	55	58	55	50	53	55	50	60

2002-06756-3/19/02-2313 E STADIUM-  
Wichita Exc- 119' W of Mt 2492(1473)  
4"40 PVC, 2022, Back to wye w/donut

95-60587 4269 S 2223 E 21st - STA 13+24.3  
#4195-2nd - 2214 Shadybrook - 2-24-53 - Frederick Oly  
#4350-top - 2213 E. 20th - 3-3-03 - Mr Donald  
95393-7 #3301-2nd - 2203 E. 21st - 11-30-95 - Richard La Joy, Jr  
#5799-2nd - 2213 E. 21st - 5-13-53 - Richard La Joy, Jr

LAT. 9 DISTE MAIN 12 → May 1949  
LAT. 4, DIST. E, MAIN 12  
W.B. CARTER CONST. CO.  
OCT. 1948.

CONSTRUCTION RECORD

SERVICE RECORD

STATION	ELEVATION		Depth	MANHOLE	4-INCH "Y" BRANCHES		No. of Permit		House Number		DATE OF PERMITS	
	Ground	Grade			North West	South East	North West	South East	North West	South East	North West	South East
LINE I 0+0	128.5	117.50	11.86	NEW M.W. 0+0	0+58.60k	+55.6	91-1990	#1173	2002 R N. Grove	2003 R N. Grove	4-8-48 10-13-48	10-13-48
1+0	128.8	117.70	11.69		+06.7	+03.7	#1180	#1174	2008 N Spruce	2004 R N. Grove	10-13-48	10-13-48
2+0	129.0	117.90	12.27		+58.0	+55.0	#1181	#1175	2012 N Spruce	2011 N Grove	10-13-48	10-13-48
3+0	129.0	118.10	11.68		+07.0	+04.0	#1182	#1176	2015 N Spruce	2017 N Grove	10-13-48	10-13-48
3+51.3	129.7	118.20	11.89	3+51.3	3+06.7	3+03.7	#1184	#1178	2028 N Spruce	2027 N Grove	10-13-48	10-13-48
4+0	129.6	118.50	11.67		+89.0		#1186		2307 B Madison		1-1-48	10-13-48
4+62.6	129.0	118.63	11.04	4+62.6	4+34.0		#1185		2301 Shadybrook		10-13-48	
LINE IA 0+0	129.7	118.42	12.11	0+0 (3+51.3 LINE I)	NORTH	SOUTH	#1187		2313 Madison		10-13-48	made to locate m. permit
1+0	131.9	118.61	12.51		+04		#1189		2319 Madison		10-13-48	
1+15.1	131.4	118.64	12.51	1+15.1	0+46.30k	+00.7	#1189		2323 R Madison		1-14-80	10-13-48
LINE II 0+0	126.2	116.29	10.23	NEW M.W. 0+0 M.W.	WEST	EAST	#1204	#1318	2002 N Madison	2001 N Grove	10-14-48	10-23-48
1+0	125.8	116.41	9.86		+61.2	0+58.2	#1205	#1317	2008 N Madison	2007 R Grove	10-14-48	10-23-48
2+0	126.4	116.51	10.78		+09.4	+06.4	#1206	#1316	2012 N Madison	2011 N Grove	9-8-48	10-23-48
3+0	126.6	116.61	10.49		+58.0	+55.0	#1207	#1315	2018 N Madison	2017 N Grove	10-14-48	10-23-48
3+51.0	127.1	116.66	11.14	3+51.0	+09.8	2+06.8	#1208	#1314	2022 N Madison	2021 R Grove	10-14-48	10-23-48
4+0	127.3	116.91	10.75		+60.1	2+57.1	#1209	#1313	2028 N Madison	2027 N Grove	10-14-48	10-23-48
5+0	126.7	117.21	9.11		+11.8	3+08.8	#1308		2207 R Shadybrook		1-12-81	10-23-48
5+01	126.7	117.01	9.95	5+01	3+86.9	4+22.2	#1308		2201 Shadybrook		11-7-73	
6+0	126.7	117.31	9.85									
7+0	126.2	117.41	9.88									
7+90.8	126.2	117.50	9.66	7+90.8								
8+0	126.4	117.51	9.77									
9+0	126.7	117.61	9.93									
10+00	126.7	117.71	9.62									
10+57.8	126.8	117.76	9.99	10+57.8								
11+0	126.9	117.81	9.80									
12+0	127.1	117.91	9.59									
13+0	127.0	118.01	9.75									
14+0	127.0	118.11	9.41									
14+39.3	127.7	118.14	9.49	14+39.3								
LINE II-A 0+0	127.1	116.86	11.19	0+0 (Sto. 3+51.3 LINE II)	NORTH	SOUTH	#1310		2313 Shadybrook		7-2-60	10-23-48
1+0	128.4	117.06	11.47		+04		#1311		2219 Shadybrook		10-23-48	
1+13.3	128.4	117.08	11.41	1+13.3	+41.2		#1312		2228 SKO Shadybrook		7-17-02	10-23-48
LINE II-C 0+0	126.8	117.96	9.66	0+0 (Sto. 10+57.8 LINE II)	NORTH	SOUTH	#1268	#1233	2201 Madison	2202 E. 20	10-21-48	10-21-48
1+0	127.4	118.16	9.75		+33.2	+36.2	#1269	#1234	2207 Madison	2208 E. 20	10-21-48	10-21-48
2+0	127.9	118.36	10.04		+84.8	+87.8	#1270	#1235	2213 Madison	2214 E. 20	10-21-48	10-21-48
2+92.0	128.2	118.55	10.73	2+92.0	+36.8	+39.8	#1271	#1236	2221 Madison	2222 E. 20	10-21-48	10-21-48
3+0	128.4	118.56	10.78		+88.2	+91.2	#1272	#1237	2223 Madison	2224 E. 20	10-21-48	10-21-48
4+0	128.9	118.76	10.67		+49.0	+52.0	#1241	#1234	2229 Madison	2230 E. 20	10-18-48	10-18-48
5+0	129.9	118.96	11.56		+03.0	2+06.0	#1240	#1233	2301 Madison	2302 E. 20	10-18-48	10-18-48
5+79.7	130.7	119.13	12.60	5+79.7	3+51.2	+54.2	#1238	#1232	2307 Madison	2308 E. 20	10-18-48	10-18-48
					4+08.9	+11.9	#1239	#1231	2313 R Madison	2314 R E. 20	3-19-02	3-17-03
					+60.3	+63.3	#1237	#1231	2323 Madison	2324 E. 20	10-18-48	10-18-48
					+60.0	+63.0	#1235	#1229	2323 Madison	2324 E. 20	10-18-48	10-18-48

\* Note: Line II-B is located on next page. 93-3997 2021 W Grove (kept all but lower 4' of line) 95-140947 7-8-95 2012 N Madison - Jones Pkg -

5042053  
 #1309 - top 2201 Shadybrook 10-23-48 - Wichita Pkg. Co.  
 #5623 - top 2257 E. 21st 8-17-95 City and Pkg. Co. (#40.60 special for part 8-13-51) - S/09# 54 13+72.3  
 Receipt # 23412 Special for 4000 into Madison sewer 10-17-51  
 Paid by John Sumner.  
 50 # 753 - top 2261 N. Madison - 4-3-52 - L. J. Co. - 50 13+32.3 (top 22 14+34.2) 4-1-76 at Kennedy  
 54561 4-1-76 at Kennedy