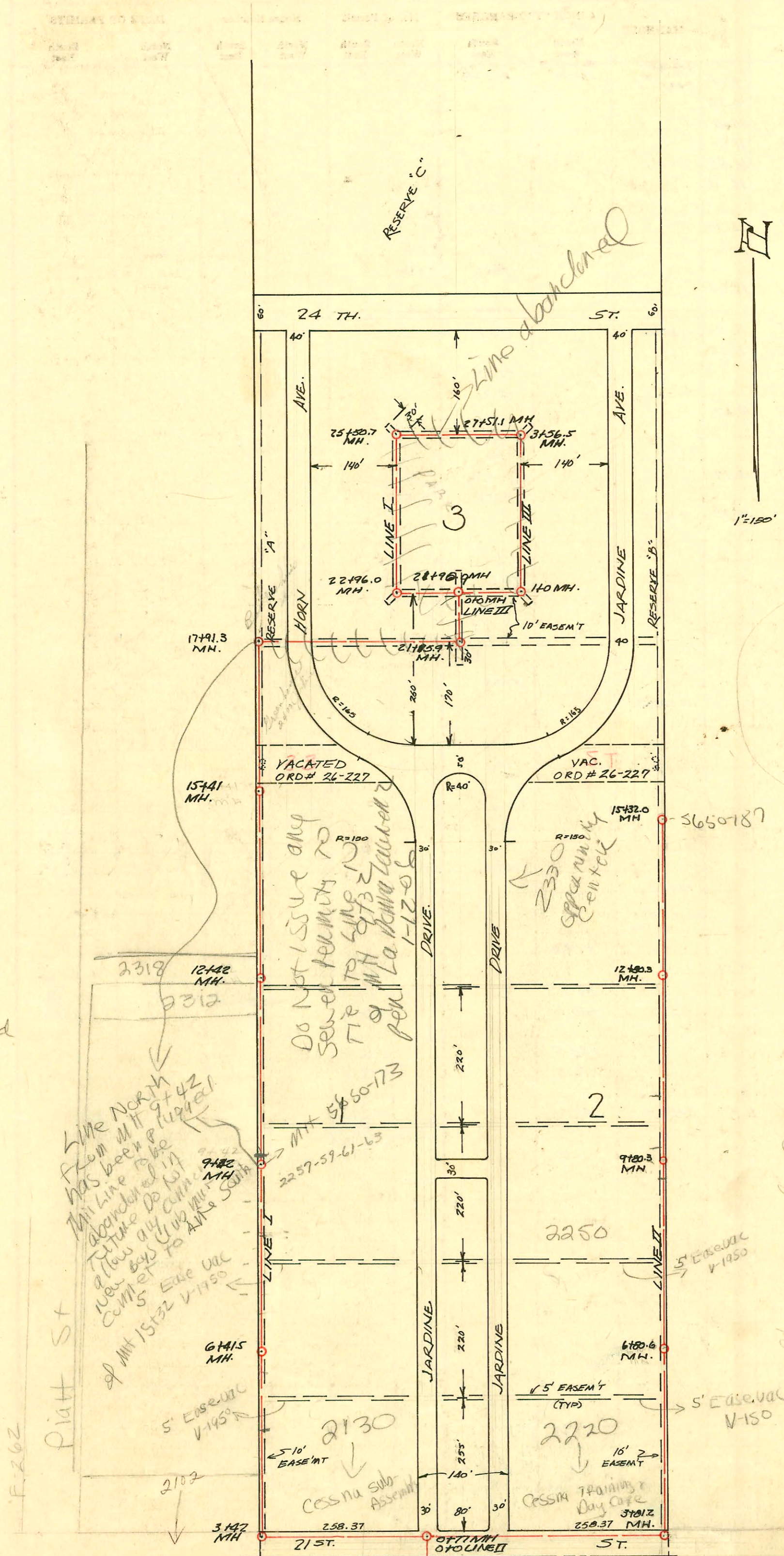


SERVICE RECORD

CONSTRUCTION RECORD



8" Lines were formally maintained by Heartspring City now owns property. 8" Lines will be TD'd and City will assume maint. BK 874-96

# 378 Job - 2221 N. Grove - 3-19-54 - Richard La Fay, Jr  
 # 6806 Job - 2301 & 2311 - 10-26-55 - Richard La Fay  
 \* 14733 Job - 2400 Jardine - 9-26-61 - Anita Turner (20438.9)

W.B. CARTER CONST. CO.  
 Proj. No. (PRIVATE LINE)  
 DATE 1948 City Maint

CONSTRUCTION RECORD

SERVICE RECORD

STATION	ELEVATION		Depth	MANHOLE	4-INCH "Y" BRANCHES		No. of Permit		House Number		DATE OF PERMITS	
	Ground	Grade			North West RIGHT EAST	South East LEFT WEST	North West	South East	North West	South East	North West	South East
0+0		118.34	9.29	Sta. 0+77 0+0 L.I								
1+0	128.3	118.74	10.32									
2+0	130.0	118.87	11.48									
3+0	130.3	118.97	11.81									
3+81.2	130.9	119.05	12.48	3+81.2								
4+0	130.8	119.27	12.16									
5+0	131.0	119.37	12.13									
6+0	131.8	119.97	12.63									
6+80.6	131.1	119.55	12.01	6+80.6								
7+0	134.8	119.57	11.52									
8+0	129.8	119.67	10.67									
9+0	129.6	119.77	10.19									
9+80.3	129.4	119.85	10.23	9+80.3								
10+0												
11+0												
12+0												
12+80.3				12+80.3								
13+0												
14+0												
15+0												
15+32.0				15+32.0								
0+0	129.5	121.55		Sta. 21+95.6 0+0 LINE I								
1+0	130.2	121.65	9.54	1+0								
2+0	129.8	121.95	8.65									
3+0	130.1	122.05	8.73									
3+56.5	130.9	122.11	9.49	3+56.5								
1+0												
2+0												
3+0												
3+56.5												

#  
LINE 2

#  
LINE 3

97-195-7 1-2-97 2220 E 21st (Cessna training & Day Care) - vlc

CONSTRUCTION RECORD

SERVICE RECORD

DATE OF SERVICE		DESCRIPTION OF SERVICE		DATE OF CONSTRUCTION		DESCRIPTION OF CONSTRUCTION	
Year	Month	Start	End	Start	End	Material	Notes
2003	10/3/03	2250	Jardine-Wichita Exc			Partial change 4" 40 PVC - 1145, 1122, 1121WCO, ferro to clay	

2003-02571- 10/3/03- 2250 Jardine-Wichita Exc- Partial change 4" 40 PVC - 1145, 1122, 1121WCO, ferro to clay