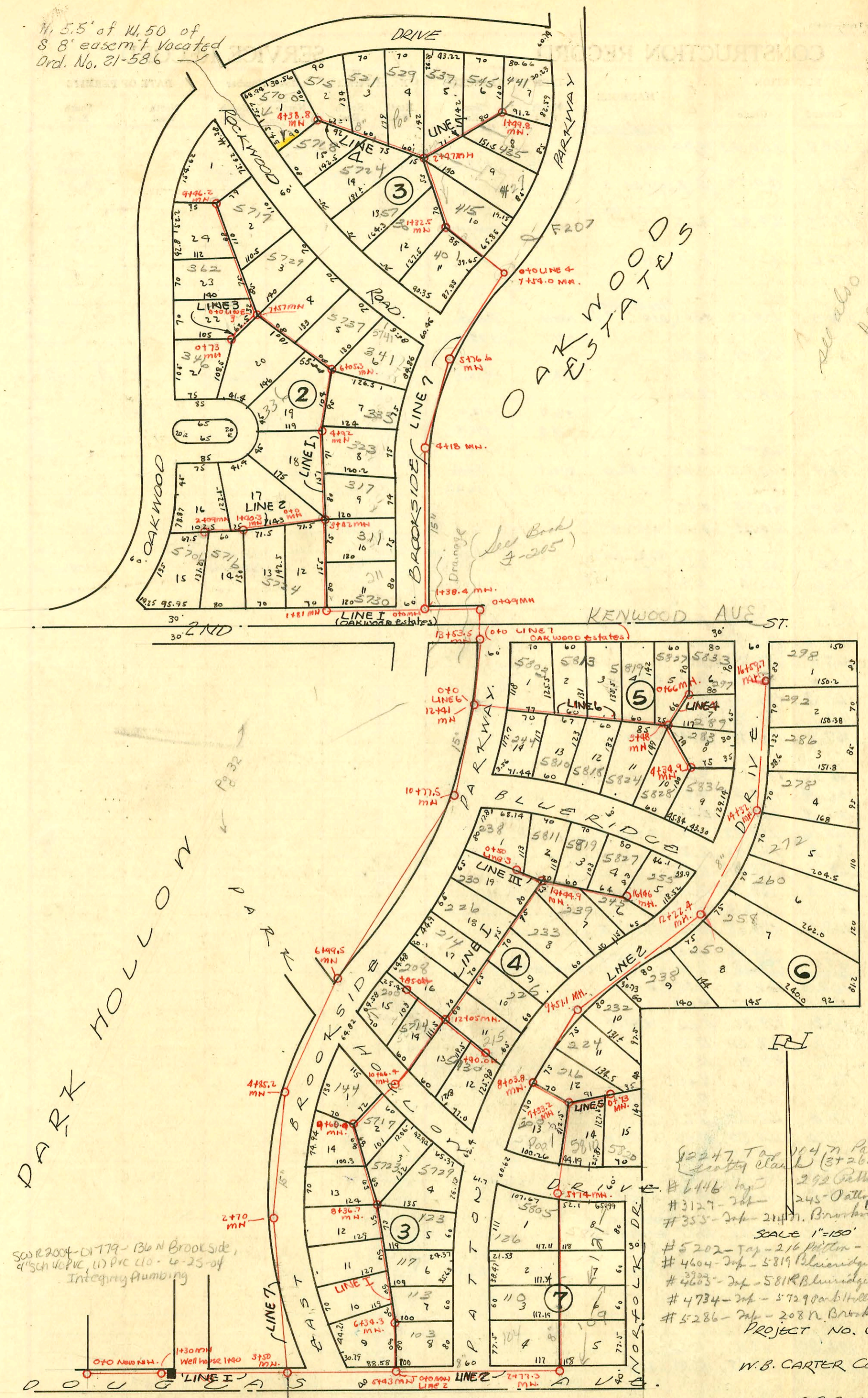


W. 5.5' of W. 50' of  
S 8' easmt. Vacated  
Ord. No. 21-586



OAKWOOD  
ESTATES

See also  
page 32

DARK HOLLOW  
PARKWAY

SO. R 2004-01779-136 N Brookside,  
4" sch 40 PVC (17) PVC 10-4-25-04  
Integrating Pumping

01801 Plugged (Ties)  
(900ep)  
1. 200' W.O.W. to SE Cor. S. Subdivided Douglas Culvert.  
2. 43.9' E. to Bk. next ob. Brookside  
3. 16.8' E. to S.W. Cor. West. Stone Plaster

\* On Line I - ~~top~~ top charge to be  
made when they get  
no wye on the building  
site.

- # 1545 - Top - 200' N. Brookside - 7-6-50 - Vaughn Ppty. Co
- # 1611 - Top - 250 N. Patton - 7-13-50 - C. D. Colman
- # 1612 - Top - 222 N. Brookside - 7-14-50 - Vaughn Ppty. Co.
- # 1843 - Top - 260 Patton - 8-3-50 - Rupp Ppty. Co.
- # 1886 - Top - 272 Patton - 8-8-50 - A. P. Krimm (13+47)
- # 1875 - Top - 401 N. Brookside - 8-7-50 - Crown Republic
- # 2619 - Top - 235 Patton - 10-9-50 - Rupp Ppty. Co.

SCALE 1"=150'

# 2247 Top - 114 N. Patton 2-2-60  
Leather Clark (3+26.3) 9-15-53  
# 6446 Top - 292 Patton - 9-15-53  
# 3127 - Top - 245 Patton - 11-6-52 - J. L. Bond  
# 3555 - Top - 211 N. Brookside - 3-14-52 - Vaughn Ppty. Co. (13+30.7)  
# 5202 - Top - 216 Patton - 7-10-51 - Thompson  
# 4604 - Top - 5819 Blue Ridge - 5-9-51 - Millard  
# 4603 - Top - 5818 Blue Ridge - 5-9-51 - Millard  
# 4734 - Top - 5790 Brookside - 5-25-51 - Howard  
# 5286 - Top - 208 N. Brookside - 7-19-51 - Vaughn Ppty. Co.

PROJECT NO. C27-26

W.B. CARTER CONST. CO.

Lot 26 D.C.S. Main 12.

DATE 1948

- # 3589 - Top - 103 Patton - 1-5-51 - Kendall Ppty. Co.
- # 3590 - Top - 103 Patton - 1-5-51 - Kendall Ppty. Co.
- # 3276 - Top - 5730 Park Hollow - 12-4-50 - Rupp Ppty. Co.
- # 788 - Top - 5724 E 2nd - 4-28-50 - Advertiser
- # 2406 - Top - 2790 Brookside - 7-19-50 - Kendall Ppty. Co.
- # 2437 - Top - 136 Brookside - 7-22-50 - Vaughn Ppty. Co.
- # 2410 - Top - 225 Patton - 9-19-50 - Rupp Ppty. Co.
- # 2912 - Top - 278 Patton - 10-31-50 - Colman
- # 3204 - Top - 113 Patton - 11-27-50 - Kendall Ppty. Co.
- # 3114 - Top - 311 N. Brookside - 11-13-50 - Kendall Ppty. Co.
- # 3115 - Top - 5730 E 2nd - 11-13-50 - Kendall Ppty. Co.
- # 4162 - Top - 285 Patton - 3-22-51 - Vaughn Ppty. Co.

