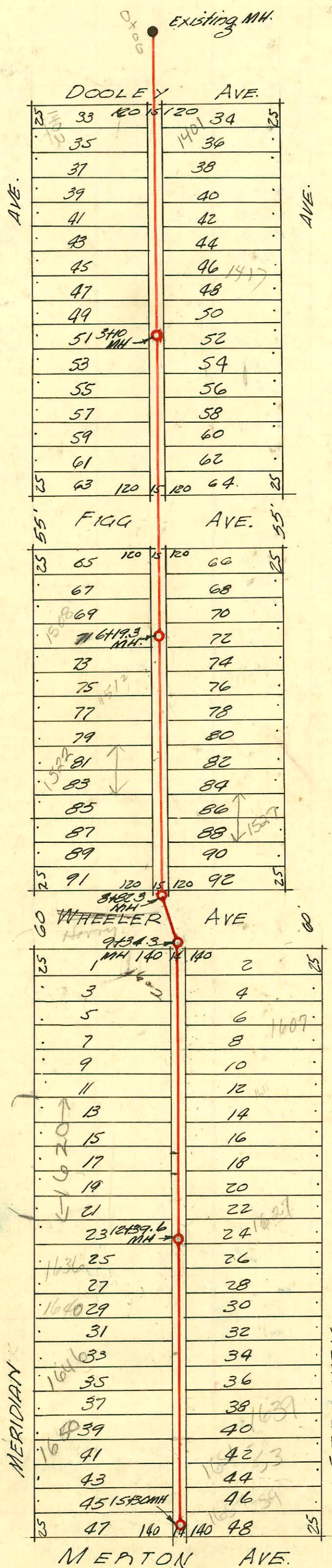
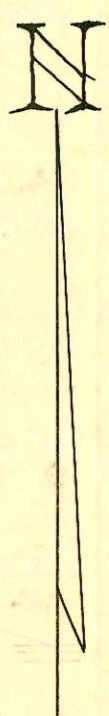


SERVICE RECORD CONSTRUCTION RECORD



2000-02620-11/30/00 - 1417 S Sedgwick - Woodward Plog  
 4" SCH 40 - wye Replaced 6' 9" N of MH 3110 - Replaced entire  
 Line - TWIN CO, 1V22, Dirt alley cut



W. P. Carter CONST. CO.

L. AT. 4, DIST. B, MAIN 21

DATE 1948

1" = 100'

2002-03224 11/6/02 16505 Meridian Asah NoLeaks  
 4" 40 PVC Replaced all but lower 6" (Used 4x4 ferro  
 clamp) shallow existing 4" co @ house 2H72  
 dirt alley cut

CONSTRUCTION RECORD							SERVICE RECORD					
STATION	ELEVATION		Depth	MANHOLE	4-INCH "Y" BRANCHES		No. of Permit		House Number		DATE OF PERMITS	
	Ground	Grade			North West	South East	North West	South East	North West	South East	North West	South East
0+0	109.0	102.41	7.65	OLD MH 0+0	+69	+66	#2728		1407 S. Meridian		10-1-52	
1+0	109.5	102.53	7.32		+90.1	+87		#5075	1401 S. Sedgwick		10-31-50	6-25-51
					+117.6	+114.6		2000-02380	NK-Recorrupt		10-31-50	
					+41.5	+38.5		#2491	1403 S. Sedgwick		9-12-52	
					+63.3	+60.3						
					+90.3	+87.3	#1089		1412 S. Meridian		1-17-52	
2+0	109.4	102.63	7.35		+215.1	+212.1		2000-02620	1418 S. Meridian	1417 S. Meridian	11-3-50	5-9-52
					+43.0	+40	#1058	#1178			4-20-52	
					+67.7	+64.7						
					+92.5	+89.5	#1059	#1857	1426 S. Meridian	1421 S. Sedgwick	4-20-52	7-11-52
3+0	109.5	102.73	7.33									
3+10	109.2	102.74	7.18	3+10	3+20	3+17	#1060		1428 S. Meridian	1425 S. Sedgwick	4-30-52	3-11-53
					+42.1	+38.1		#4419				
					+72.2	+69.2						
					+93.0	+90.0	#4790	#7114	1432 S. Meridian	1431 S. Sedgwick	1-17-52	1-18-52
4+0	109.0	102.83	6.52		+418	+415						
					+39.5	+36.5	#116	#187	1438 S. Meridian	1437 S. Sedgwick	2-21-52	4-28-80
					+67.0	+63.0					6-25-76	
					+91.4	+88.4						
5+0	107.8	102.93	5.07		+518.5	+515.5						
					+43.3	+40.3	#1036		1502 S. Meridian		4-29-52	
					+64.7	+61.7		#1914				2-17-52
					+92.8	+89.8						
6+0	107.2	103.03	4.55		6+140	6+11.0	#1037	#1913	1508 S. Meridian	1504 S. Sedgwick	4-29-52	7-19-52
6+19.3	107.2	103.05	4.45	6+19.3	+41.4	+38.4	57143	#2621	1512 S. Meridian	1515 S. Sedgwick	8-10-76	9-22-52
					+69.3	+63.3						
					+91.0	+88.0	57144	#1077	1512 S. Meridian	1519 S. Sedgwick	8-10-76	5-1-52
7+0	106.9	103.13	4.15		+715.1	+712.1						
					+39.6	+36.6	#2488	#2489	1522 S. Meridian	1525 S. Sedgwick	3-10-74	9-12-52
					+67.3	+64.3						
					+95.3	+92.3						
8+0	107.1	103.23	4.31		8+162	8+130	#5389		1530 S. Meridian		6-17-53	
					+40.5	+37.5						
					+65.3	+62.3		#1038	1533 S. Sedgwick		4-29-52	
8+82.3	107.2	103.51	4.21	8+82.3								
9+0		103.51	3.39									
9+34.3		103.56	3.49	9+34.3	9+50.0	9+47.0	#3669		1602 S. Meridian		1-5-53	
					+78.1	+75.1						
					+99.6	+96.6						
10+0		103.83	3.14		10+27.5	10+24.5		C19812	1607 S. Sedgwick		6-24-70	
					+51.2	+48.2						
					+75.1	+72.1		#1432	1611 S. Sedgwick		7-8-54	
					+99.0							
11+0		103.93	2.91		11+00							
					+29.4	+24.4	#1433		1617 S. Sedgwick		10-14-55	7-8-54
					+52.2	+49.0						4-14-55
					+76.5	+73.5						6-16-54
					+97.4							
12+00		104.03	2.77		12+00.4							
					+25.2	+22.2						
12+39.6		104.07	2.88	12+39.6	+49.6	+46.6						10-25-54
					+77.5	+74.5						
13+0		104.13	3.03									
					13+05.0	13+02.0	2001-00305	#3179	1616 S. Meridian	1637 S. Sedgwick	2-12-76	11-22-50
					+26.1	+23.1						
					+54.0	+51.0						
					+81.5	+78.5						
14+0		104.23	2.99		14+05.5	14+02.5						
					+29.3	+26.3						
					+55.5	+52.5						
					+78.6	+75.6						
15+0		104.33	1.64		15+05.2	15+02.2						
15+30		104.36	2.38	15+30	15+24.7	15+21.7						

#6365 - Top 1437 S. Sedgwick - 11-2-59 - Eugene Reynolds #10254 - Top 1640 S. Meridian - 2-4-60 Miller Anderson (12+58.6)

#3388 - Top 1527 S. Sedgwick - 12-5-52 - R.K. Ray #53777 - Top 1637 S. Sedgwick - 2-18-76 D. Coleman (13+40.5)

R #6745 - Top 1408 S. Meridian - 10-21-53 - R.K. Ray (1459.0)

#974 - Top 1527 1/2 S. Sedgwick - 5-18-54 - Robert R. Daulding

#2644 - 1622-29 S. Meridian - 11-19-54 - Brody Plbg. #94-6323-7-1638 S. Meridian - 4-29-74 - Tied into existing line 6" From Old - 4" PVC 40

#4156 - Top 1637 S. Sedgwick (Cen) Dendyouth Plbg - 5-9-55

1248 Top 1411 S. Sedgwick - 6-26-56

9977 Top 1622 S. Meridian Callison 4-8-59 - 117746