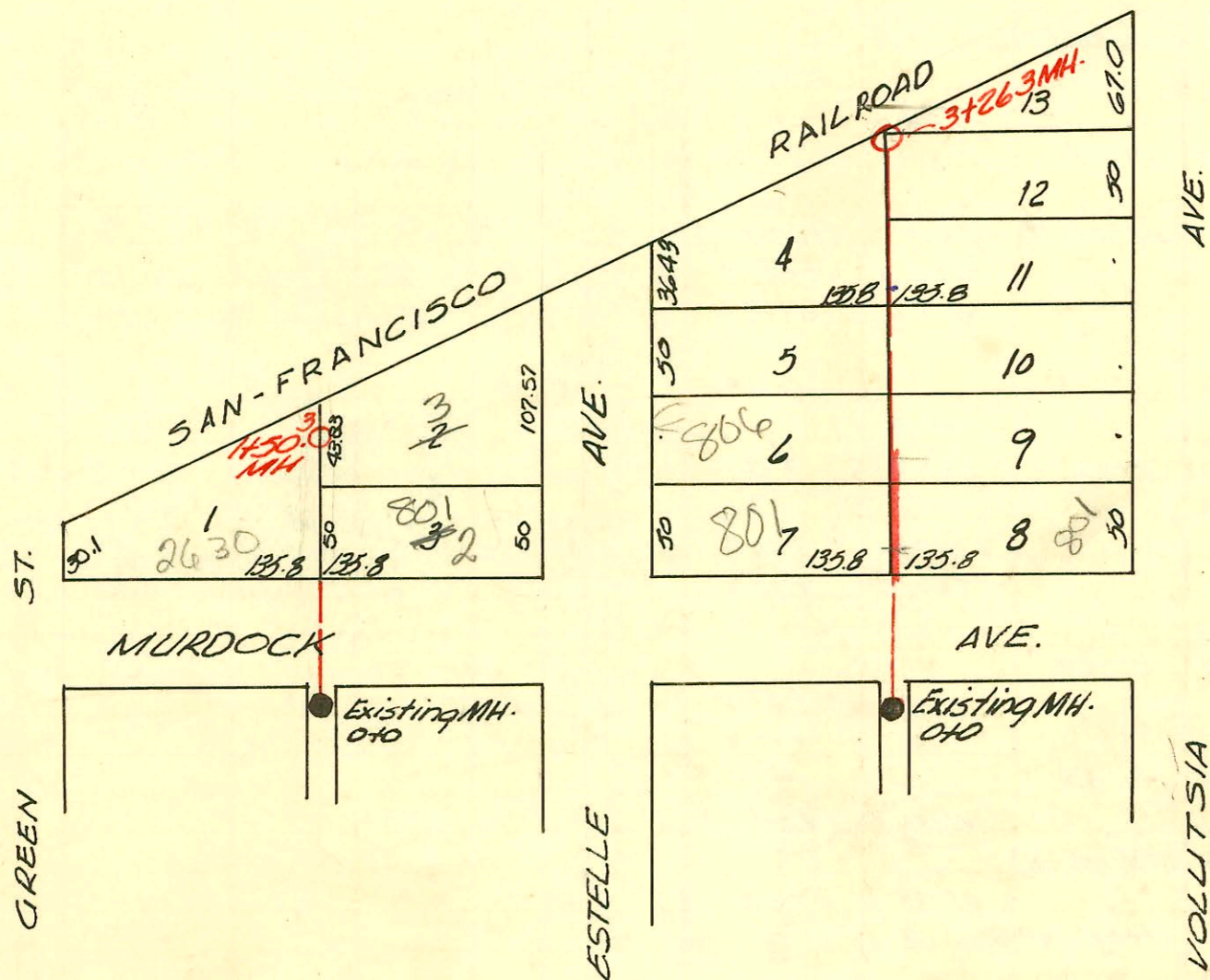


SERVICE RECORD

CONSTRUCTION RECORD



LAT. 11, DIST. D, MAIN 12
 W.B. CARTER CONST. CO.
 PROJ. NO. C28-11
 DATE 1948

CONSTRUCTION RECORD

SERVICE RECORD

LINE I

LINE II

STATION	ELEVATION		Depth	MANHOLE	4-INCH "Y" BRANCHES		No. of Permit		House Number		DATE OF PERMITS	
	Ground	Grade			North West	South East	North West	South East	North West	South East	North West	South East
0+0	117.0	108.98	8.74	old MH. 0+0 8"CP	+93.3	+90.3	# 960	# 13259	802 N. Estelle	894 N. Volusia	5-11-50	8-13-97
1+0	117.0	109.08	8.40		510 1+51 1+42.1	1+39.1	# 3126	# 3257	806 N. Estelle	805 N. Volusia	2-9-54	11-29-50
2+0	117.1	109.18	8.27		+91.1	+88.1	# 3129	# 3264	812 N. Estelle	809 N. Volusia	2-23-50	2-10-50
3+0	117.4	109.28	8.68		+43.4	2+40.4		# 3265	813 N. Volusia			2-10-50
3+26.3	117.7	109.31	8.72	3+26.3	+91.6	+88.6		# 3266	817 N. Volusia			2-10-50
0+0	113.4	104.49	9.40	old MH 0+0 8"VCR	+89.5	+86.5		# 1390	801 N. Estelle		4-16-92	
1+0	114.2	104.59	10.07									
1+50.3	114.6	104.64	10.38	1+50.3								

2004-00288 2/10/04 806 W Estelle - Overnight - Reconnect - City Tap Predco 156' N of MH 0+0 (1+56), 4" SCH40PK
TWIN CO, 1V45

2001-00367-2/21/01-801 N Estelle Ave - Boardman - 4" SCH40, Tied to Claytile, Replaced aprx 9' in middle of
service line, 2 kickouts, 1V45, 14" WYC

97-6747 # 411 Gate 2630 East Murdock 3-12-97 Collision Pllbg. Co.
98-5290-7 4-17-92 812 N Volusia Alvin Herring tap 3+26.3 Overland with 4" SOR 35 tied back to east side MH