

SERVICE RECORD

EASEMENT # 2324, Rear eight (8) feet of Lots 2, 4, 6, and 8, Silver Street, Fair Grounds Addition to the City of Wichita.

EASEMENT # 2316, Rear eight (8) feet of Lots 18, 20, and 22, Silver St., Fair Grounds Addition to the City of Wichita.

EASEMENT # 2315, Rear eight (8) feet of Lots 24, 26, 28, and 30, Silver St., Fair Grounds Addition to the City of Wichita.

EASEMENT # 2312, Rear eight (8) feet of Lots 32 and 34, Silver Street, Fair Grounds Addition to the City of Wichita.

EASEMENT # 2310, Rear eight (8) feet of Lots 36, 38, 40, 42, 44, and 46, Silver St., Fair Grounds Addition to the City of Wichita.

EASEMENT # 2317, Rear eight (8) feet of Lots 1, 3, 5, and 7, Exchange Place, Fair Grounds Addition to the City of Wichita.

EASEMENT # 2319, Rear eight (8) feet of Lots 9 and 11, Exchange Place, Fair Grounds Addition. Also, rear eight (8) feet of Lots 10, 12, 14, and 16, Silver Street, Fair Grounds Addition.

EASEMENT # 2311 Rear eight (8) feet of Lots 13, 15, 17, 19, and 21, Exchange Place, Fair Grounds Addition to the City of Wichita.

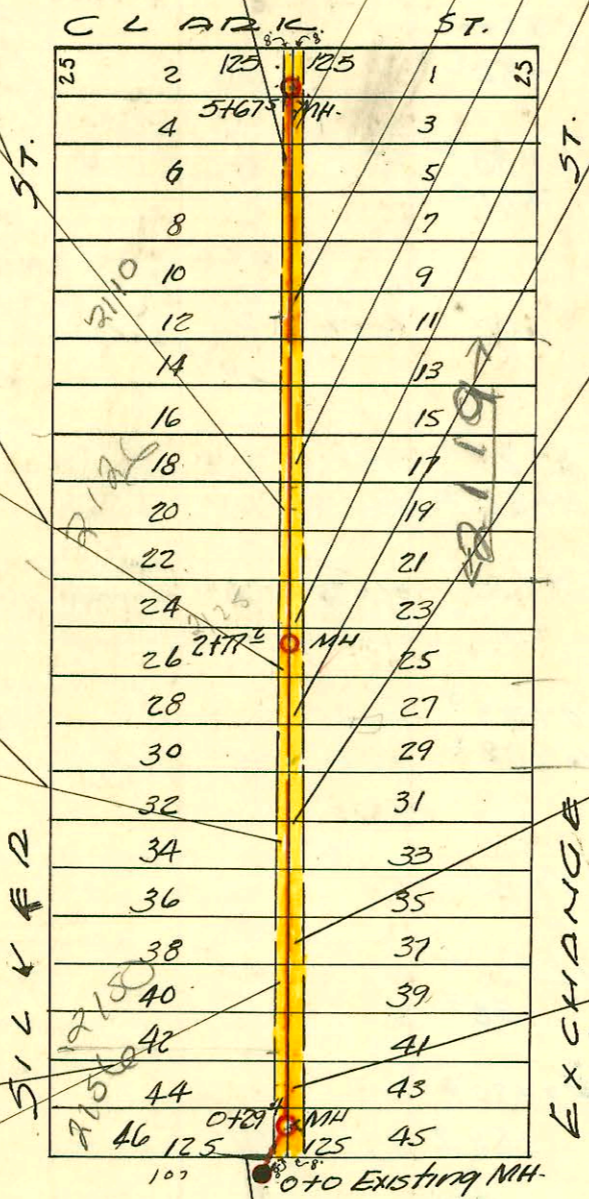
EASEMENT # 2313, Rear eight (8) feet of Lots 23 and 25, Exchange Place, Fair Grounds Addition to the City of Wichita.

EASEMENT # 2314, Rear eight (8) feet of Lots 27 and 29, Exchange Place, Fair Grounds Addition to the City of Wichita.

EASEMENT # 2318, Rear eight (8) feet of Lots 31 and 33, Exchange Place, Fair Grounds Addition to the City of Wichita.

EASEMENT # 2320, Rear eight (8) feet of Lots 35, 37, and 39, Exchange Place, Fair Grounds Addition to the City of Wichita.

EASEMENT # 2321, Rear eight (8) feet of Lots 41, 43, and 45, Exchange Place, Fair Grounds Addition to the City of Wichita.



LAT. 4, DIST. B, MAIN 20  
W.B. CARTER CONST. CO.  
Date 1949

5675  
20  
148

BM. 100.75 60<sup>th</sup> Spikes S.S. V.C.E. Pole 100' West of Exchange No. Side Clark.

CONSTRUCTION RECORD

SERVICE RECORD

STATION	ELEVATION		Depth	MANHOLE	4-INCH "Y" BRANCHES		No. of Permit		House Number		DATE OF PERMITS	
	Ground	Grade			North West	South East	North West	South East	North West	South East	North West	South East
0+0	<del>97.89</del>	91.89	6.73	Existing	0+24.1	0+21.1						
0+29.5	97.9	92.14	6.11	0+29.5	+48.8 0+71.0 +98.2	+45.8 +68.0 +95.0	#3290 966097 3289	#7457	2156 Silver 2150 R Silver 2153 Exchange	2153 Exchange	2-11-50 1-22-50 2-11-50	2-7-50
1+0	97.8	92.21	6.02		1+21.7 +46.0 +73.6 +95.0	1+18.7 +70.0	#3288 #2099	#1157	2144 Silver 2140 Silver	2135 Exchange 2131 R Exchange	2-11-50 2-11-50	3-4-49 5-26-50
2+0	97.8	92.31	5.57		2+22.6 +46.0 +70.8 +99.1	2+19.6 +43.6	20170 #3286	#1632	2134 Silver	2127.50 Exchange	2-25-50 2-11-50	7/20/67
2+77.2	98.2	92.39	6.03	2+77.2	+70.8 +99.1	+49.6 +96.0	#3142	#4062	2130 Silver	2125 Exchange	1-25-50	3-8-51
3+0	98.5	92.41	5.80		3+26.6 +49.6 +71.5 +98.6	3+23.6 +46.0 +95.6	99-6072-7 #4507	91-189527	2126 R See below 2119 R Exchange	4999 3-18-50	3-13-91 4-2-51	
4+0	98.5	92.51	6.09		4+23.0 +47.4 +71.4 +99.5	4+20.0 +44.4 +96.5	#4193	#13201 2783	2110 Silver	2111 R Exchange	3-23-51	5-6-55 10-6-52
5+0	99.6	92.61	7.24		5+24.0 +45.8	5+21.0	#4446	#1124	2108 Silver	2101 Exchange	4-27-51	8-4-49
5+67.5	100.2	92.68	7.83	5+67.5			#4447		719 W. Pearl		4-24-51	

99-6072-7-4/1/99-2126 S Silver - Aethering - 4" SCH 40 - 4" Wye 49' N of MH 2+77.2 (3+26.6) Replaced entire line

#4194 - 2nd - 2116 Silver - 5-23-51 - Wichita Ody Co  
 #5897 - 2nd - 2119 Exchange - 9-24-51 - Kendall Ody Co  
 H. 23319 - 6/7/89 - 2119 1/2 S. Exchange - Hemming - 3+46.7