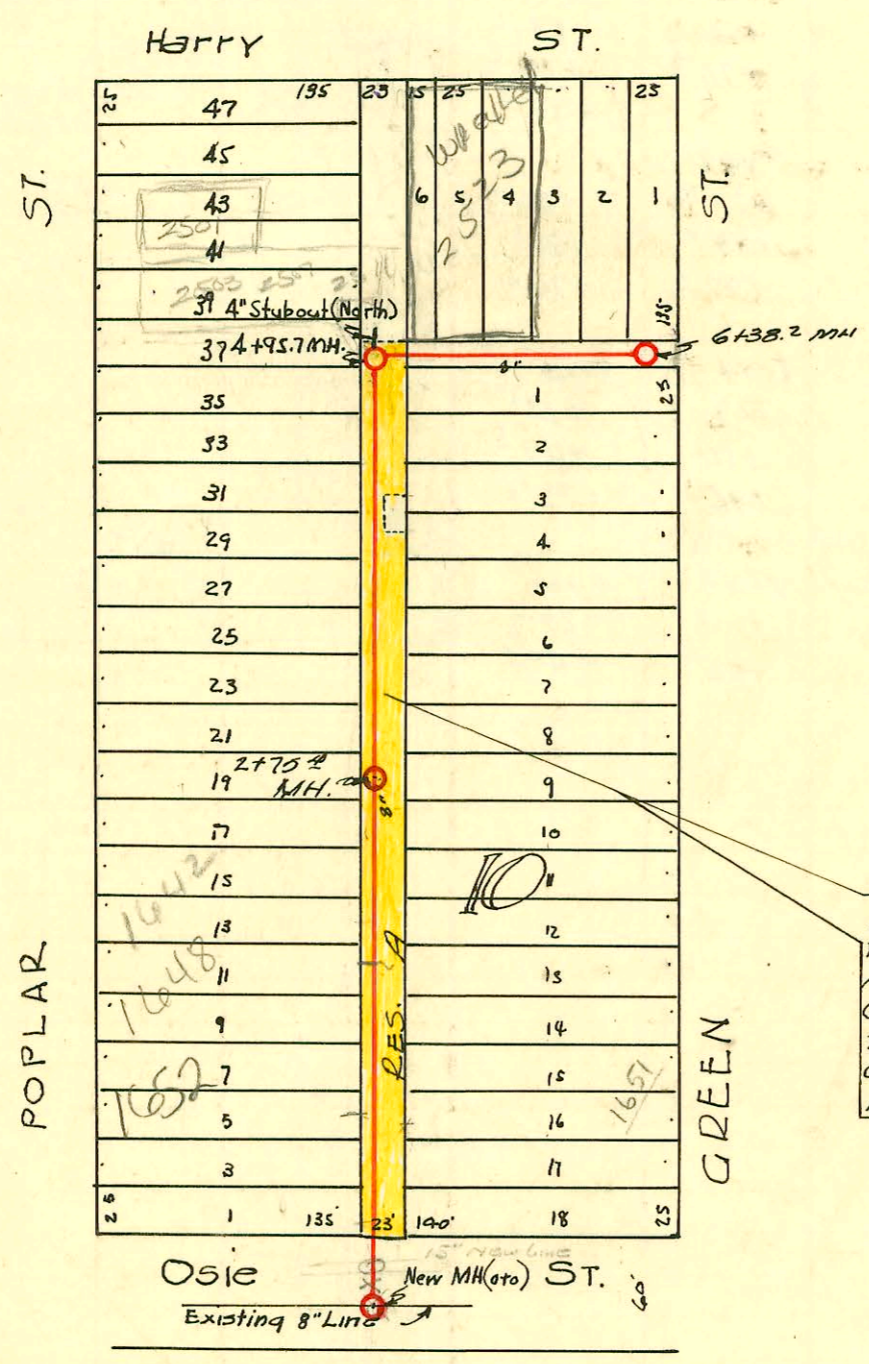


SERVICE RECORD CONSTRUCTION RECORD

DATE OF SERVICE	NAME OF SERVICE	NO. OF SERVICE	DATE OF SERVICE	NAME OF SERVICE	NO. OF SERVICE



W.B. Carter Const. Co.
 1949
 Lat. 5 Dist. AS. Main 12
 C28-41

EASEMENT #2338 Reserve A, except the north one hundred thirty-five (135) feet, in Eichholtz Addition, City of Wichita, Sedgwick County, Kansas, also except an area of twelve feet by eighteen feet on the east side of Reserve "A" adjoining lots three and four in block ten, Eichholtz Addition.

Refer to Deed # 2338

POPLAR

GREEN

Existing 8" Line
 New MH (oto)

CONSTRUCTION RECORD							SERVICE RECORD					
STATION	ELEVATION		Depth	MANHOLE	4-INCH "Y" BRANCHES		No. of Permit		House Number		DATE OF PERMITS	
	Ground	Grade			North West	South East	North West	South East	North West	South East	North West	South East
0+0	99.6	94.29	5.87	0+0 (New MH)	0+53	0+50	# 0785	# 4649	2502 E. Olive	1657 S. Green	2-5-64	3-14-51
1+0	100.2	94.39	6.03		1+67	-	2002-01914	94751847	1652 S. Poplar	1651 S. Green	7-11-02	9-21-94
					1+98	1+95	# 441	# 278			6-6-49	4-1-50
					1+19.3							
					1+49.3	1+46.3		# 277	1648 S. Poplar	1647 S. Green	7-20-07	4-1-50
					1+73.3			# 440			6-6-49	
2+0	101.2	94.49	6.73		4" PVC 40	1+98.2		# 276	1642 S. Poplar	1641 S. Green	2-25-46	4-1-50
					2+01.2			# 439			6-6-49	
					1+25.1							
					1+49.2	2+46.3		# 438	1638 S. Poplar	1637 S. Green	6-6-49	7-20-49
2+75.4	101.2	94.57	6.88	2+75.4	1+70.1			# 945				
						1+98.1		# 2459		1631 S. Green		4-9-49
3+0	100.9	94.57	6.89		3+01.1			# 437	1632 S. Poplar		6-6-49	
					1+24.9							
					1+51.2	3+48.2		# 2675	1628 S. Poplar	1625 S. Green	12-3-49	4-12-49
					1+73.2							
						1+97.5		# 2059		1621 S. Green		10-15-49
4+0	101.2	94.69	6.59		4+00.5			# 2674	1622 S. Poplar		12-3-49	
					1+21.6							
					1+52.1	4+47.1						
					1+69.5							
4+95.2	101.2	94.80 out	6.71	4+95.2	4+95.2	(4" stub out North)	# 2240		2523 E. Harry		3-24-49	
5+0		94.79 in	6.63		4+22.7	NORTH SOUTH	12605		2553 E. Harry		11-15-89	
					5+17.3		2000		2523 E. Harry	Beauty Salon	11-29-00	
					5+32.2		102607		2535 E. Harry		3-24-49	
					5+47.4		# 2339		2525 E. Harry		3-24-49	
					5+47.4		# 2338		2527 E. Harry		3-14-84	
					5+50.4		# 2337		2527 E. Harry		3-24-49	
					5+83.5							
6+0	101.1	94.87	6.73		6+07.3							
					1+31.8	5+64.3.8	9912502-7	# 1683	2531 E. Harry	510	6-11-99	6-18-52
6+38.2	100.5	94.93	5.92	6+38.2								

NOTE
 SWR 2000-01974 8/3/00 2503-07-11 E Harry - Lubbers EXC - MH STUB - TAP TO MH STA 4+95.2 (5645-242)
 Approved by Terry Cox, Swr Maint Div)
 2002-01914-711102-1652 S Poplar - A Ettenning - 4" PVC 40 - 4" eye repair 81' N of MH 0+0 (0+81) shallow -
 Replace entire line - 1V22, 1TWINCO@house - no alley
 12/15 (2527 1/2 E Harry) - 9-25-84 - Al Henning - (5+30.7)
 C 11160-1616 S Poplar - trailer - Dennis Lyne - tap (4+63.7)
 #847-2501 E. Harry - tap - Baker Plumbing - 6/4