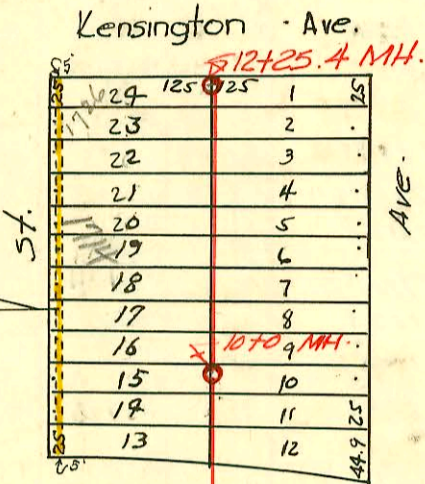


SERVICE RECORD

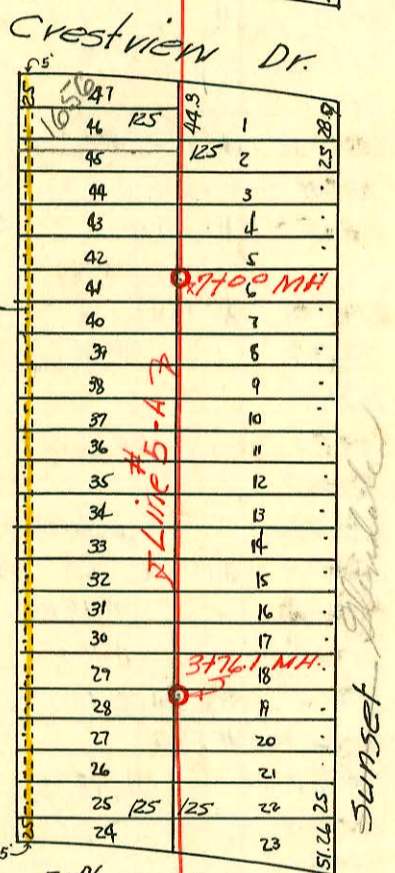
CONSTRUCTION RECORD

Book M3

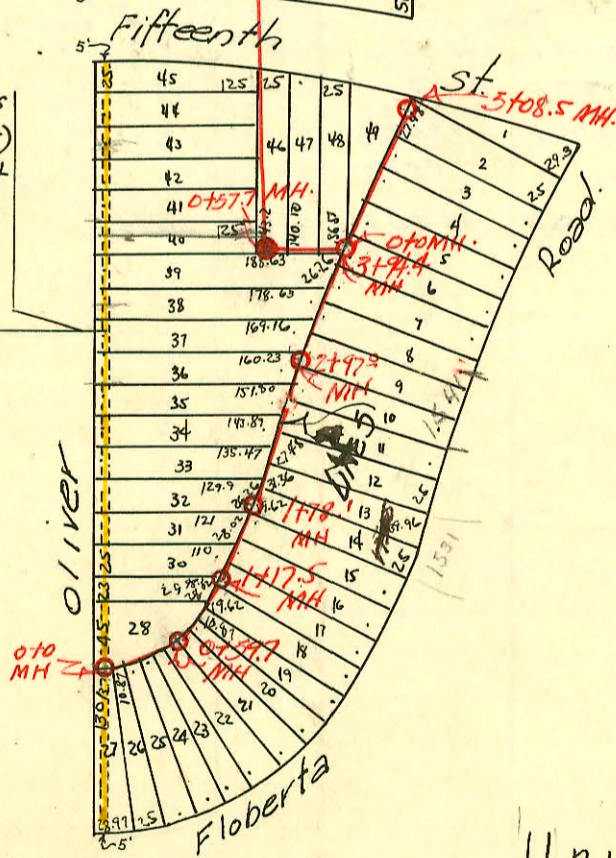
EASEMENT # 2328, From Russ Prater Inc. — The East five (5) feet of the West ten (10) feet of lots thirteen (13) to twenty-four (24) inclusive in Block twenty-three (23);



EASEMENT # 2328, From RUSS PRATER INC. — The East five (5) feet of the West ten (10) feet of lots twenty-four (24) to forty-seven (47) inclusive in Blocks sixteen (16);



EASEMENT # 2328, From Russ Prater Inc. — The East five (5) feet of the West ten (10) feet of Lots twenty-seven (27) to forty-five (45) inclusive in Block fifteen (15);



Lines	Remarks	page	111
"	4	"	107
"	4A-4B-4C	"	109
"	4D	"	110
"	5-SA	"	105
"	6	"	112
"	7	"	106
"	8	"	110
"	9	"	108

University Heights Sewer
 W.B. Carter Proj. No. C28-27
 1949

260 - Top - 1714 N. Oliver - 3-31-50 - Brodie P. Co (11+40.8)
 # 261 - Top - 1720 N. Oliver - 3-31-50 - Brodie P. Co
 # 262 - Top - 1726 N. Oliver - 3-31-50 - Brodie P. Co (12+21.9)
 # 75 - Top - 1719 N. Blundell - 2-9-50 - Brodie P. Co Seal off # 22043 12-5-70 - Al Hemming (11+25.4)
 C-22063 - Top - 1719 N. Blundell - 12-4-70 - Al Hemming (11+33.4)

CONSTRUCTION RECORD

SERVICE RECORD

STATION	ELEVATION		Depth	MANHOLE	4-INCH "Y" BRANCHES		No. of Permit		House Number		DATE OF PERMITS	
	Ground	Grade			North-West	South-East	North West	South East	North West	South East	North West	South East
Line #5 0+0	211.9	197.19	13.65	0+0		0+08.2 South +38.3 South +52.8 South		#464	1501 Floberta			6-9-49
0+59.7	211.4	197.26	14.72	0+59.7	0+88.5 West	0+65.5 East +85 East		#465 #466	1509 Floberta 1517 Floberta			6-9-49 6-9-49
1+0	211.7	197.30	14.93		West	East						
1+17.5	211.7	197.32	14.94	1+17.5	1+24.4	1+21.4						
1+78.1	211.8	197.38	15.04	1+78.1	+82.7	+52.4 +99.0		#467 #3825 #833	1525 Floberta 1531 Floberta Floberta			6-9-49 3-8-4-50
2+0	211.7	197.40	15.02									
2+97	212.1	197.50	15.23	2+97	2+50.5	2+72.4	#476	#468 #477	1530 N. Oliver 1536 N. Oliver 1542 N. Oliver	1520 Floberta 1541 Floberta		6-9-49 6-9-49 6-9-49
3+0					3+02.2	3+21.9	#477	#469				6-9-49
3+94.4	212.3	197.60	15.53	3+94.4	+77.5	+47.7	#478	#470	1542 N. Oliver	1547 Floberta		6-9-49 6-9-49
4+0					4+24.1	4+21.1 +82.4	#471		1557 Floberta 1565 Floberta			6-9-49 6-9-49
5+0	212.4	197.70	15.46					#472				6-9-49
5+08.5	212.4	197.71	15.23	5+08.5								
Line #5-A 0+0	212.5	199.03	13.92	0+0		North.						
0+57.7	212.8	199.29	13.89	0+57.7		0+22.3 West East		#473	4819 E. 15th			6-9-49
1+0	213.1	199.70	14.14		0+70.8 1+11.3 +54.1		#479	1548 N. Oliver				6-9-49
2+0	213.5	200.20	14.45		2+62.7	2+59.7	#480	1554 N. Oliver				6-9-49
3+0	214.1	200.70	13.83		3+11.7	3+08.7	#1045	#1055	1602 N. Oliver 1607 Sunset	1607 Sunset		8-1-49 8-1-49
3+76.1	214.3	201.07	13.97	3+76.1	+60.9	+57.9	#1044	#1056	1603 N. Oliver	1613 Sunset		8-1-49 8-1-49
4+0	214.8	201.20	14.09		4+08.4 +60.7	4+05.4 +57.7	#1046 #1047		1614 N. Oliver 1620 N. Oliver			8-1-49 8-1-49
5+0	215.3	201.70	14.00		5+14.1	5+11.1	#1048	#1058	1626 N. Oliver	1625 Sunset		8-1-49 8-1-49
6+0	215.8	202.20	14.16		+62.2 6+12 +64.2	+59.2 6+09 +61.2	#1049 #1050	#1059 #1060	1632 N. Oliver 1638 N. Oliver	1631 Sunset 1637 Sunset		8-1-49 8-1-49 8-1-49
7+0	216.4	202.70	14.21	7+0	7+58.8	7+53.8	#1052	#1062	1650 N. Oliver	1649 Sunset		8-1-49 8-1-49
8+0	217.1	203.20	14.41		8+12.7 +80.5	8+09.7	#1053	#1063	1654 Sunset			8-1-49
9+0	217.9	203.70	14.74		9+37.5	9+37.5	#258	#78	1702 N. Oliver	1655 Sunset		3-21-50 3-9-50
10+0	218.3	204.20	14.76	10+0	10+13.1 +55.7	10+10.1 +52.7	#259		1703 N. Oliver			3-21-50 3-9-50
11+0	218.8	204.70	14.64		11+03.8 +55.2	11+00.8 +52.2 +99.5	#477 #476		1707 N. Oliver			3-9-50 3-9-50
12+0	219.3	205.20	14.60		12+02.5		#474		1725 N. Oliver			3-9-50
12+25.4	219.6	205.32	14.63	12+25.4								

97-10881-7 7-1-97 1541 N Floberta - Buck's Backhoe

- * 257953-1536 N Oliver - Extension from Large Cam to Lane line - 9-30-76
- # 474 - Inf - 1518 N. Oliver - 6-9-49 - Brodie Pelly Co
- # 475 - Inf - 1524 N. Oliver - 6-9-49 - Brodie Pelly Co
- # 1051 - Inf - 1644 N. Oliver - 8-1-49 - Brodie Pelly Co
- # 1061 - Inf at 7+15 - 1643 Sunset 8-1-49 - Brodie Pelly Co
- # 1054 - Inf - 1601 Sunset - 8-1-49 - Brodie Pelly Co
- # 1059 - Inf - 1619 Sunset - 8-1-49 - Brodie Pelly Co
- # 1053 - Inf - 1656 N. Oliver 8-1-49 - Brodie Pelly Co