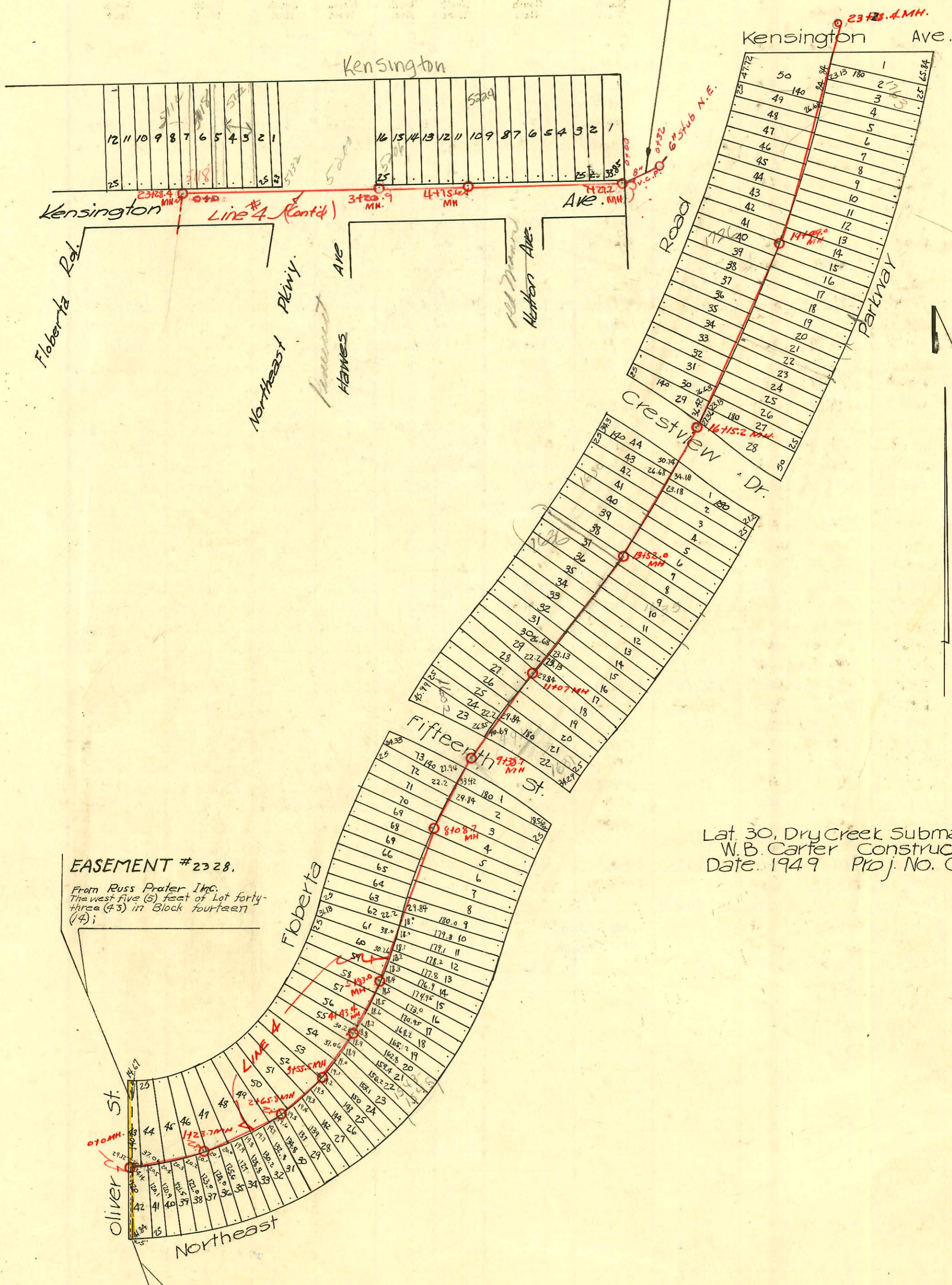


EXTENSION TO LAT. 30, D.C. SUB., S.S. #12
MID STATES CONSTRUCTION CO. 7-16-66
PRIVATE PROJ. BOOKED 9-22-67 (Plan)



EASEMENT # 2328,
From Russ Prater Inc.
The west five (5) feet of Lot forty-
three (43) in Block fourteen
(14);

EASEMENT # 2327, The East
five (5) feet of the West ten (10) feet
of Lot forty-two (42), Block fourteen (14).

Lat. 30, Dry Creek Submain, SS #12
W.B. Carter Construction Co.
Date: 1949 Proj. No. C 28-27

- # 656-24 - 5132 Kensington - 5-21-50 - Pray Bros
- # 2671-24 - 5202 Kensington - 10-12-50 - Submittal
- # 2915-24 - 1602 Floberta - 10-31-50 - Brodie Pkg. Co.
- 2000-00585 # 6358-24 - 4916 E. 15th - 9-3-53 - Harry Mann - 3/6/00 - Roto Rooter - 4" SCH 40 - 1 TWIN CO ONLY
- # 1395-24 - 1442 N. Oliver - 7-6-54 - Harry Mann

CONSTRUCTION RECORD

SERVICE RECORD

STATION	ELEVATION		Depth	MANHOLE	4-INCH "Y" BRANCHES		No. of Permit		House Number		DATE OF PERMITS	
	Ground	Grade			North West	South East	North West	South East	North West	South East	North West	South East
0+0	210.0	195.67	15.30	0+0	South 0+19 C+91	North 0+16 +88	South #1706	North #1685	South 1507 N.E. Parkway #1685	North 1508 #1685	South 12-10-48	12-10-48
1+0	210.2	195.76	15.24						1515 N.E. Parkway		12-10-48	
1+23.9	209.8	195.78	14.62	1+23.7	1+46.9 +93.5	1 +90.5	#1707	#1686	1521 N.E. Parkway	1514 #1686	12-10-48	12-10-48
2+0	209.7	195.86	14.69		2+59.2	2+56.2	#1709	#1687	1527 N.E. Parkway	1520 #1687	12-10-48	12-10-48
2+65.8	209.1	195.92	13.74 13.97	2+65.8					1533 N.E. Parkway			
3+0	208.8	195.96	13.93		3+24.4 C+West	C+East	#1710				12-10-48	
3+55.5	208.6	196.01	13.29	3+55.5 77x	3+69.8	3+66.8	#1688	#1711	1526 #1711	1539 N.E. Parkway	12-10-48	12-10-48
4+0	208.4	196.06	13.00		4+36.3	4+33.3	#1689	#1712	1532 #1712	1555 N.E. Parkway	12-10-48	12-10-48
4+43.4	208.6	196.10	13.45	4+43.4		+81.0			1538 #1713	1561 N.E. Parkway	12-10-48	12-10-48
5+0	208.4	196.16	12.90		5+26.0	5+23.0	#1690	#1713	1544 #1713	1567 N.E. Parkway	12-10-48	12-10-48
5+83.0	208.6	196.24	13.10	5+83.0	5+93.8	5+93.8	#1691	#1714	1550 #1714	1573 N.E. Parkway	12-10-48	12-10-48
6+0	208.7	196.26	13.08		6+65.6	6+41.5	#1692	#1715	1556 #1715	1579 N.E. Parkway	12-10-48	12-10-48
7+0	208.5	196.36	12.80		7+16.5	7+19.5	#1693	#1716	1562 #1716	1585 N.E. Parkway	12-10-48	12-10-48
8+0	208.5	196.46	12.84		8+20.0	-	#1695		1568 #1695	1591 N.E. Parkway	12-10-48	
8+08.9	208.2	196.47	12.69	8+08.9	8+20.0	-	#1695		1594 #1718	1601 N.E. Parkway	12-10-48	12-10-48
9+0	207.9	196.56	12.07		9+69.5	8+72.5	#1696	#1718	1610 #1696	1609 N.E. Parkway	12-10-48	12-10-48
9+38.7	207.9	196.60	11.85	9+38.7	9+91.3	9+91.3	#1697		1616 #1719	1617 N.E. Parkway	12-10-48	12-10-48
10+0	207.9	196.67	11.81		10+38.8	10+69.0	#1698		1624 #1720	1623 N.E. Parkway	12-10-48	12-10-48
11+0	208.2	196.77	12.61		11+59.7	11+33.7	#1700	#1720	1630 #1721	1629 N.E. Parkway	12-10-48	12-10-48
11+07	208.0	196.78	12.40	11+07	12+25.0	12+61.0	#1701	#1722	1636 #1722	1635 N.E. Parkway	12-10-48	12-10-48
12+0	208.0	196.87	12.33		12+94.5		#1702		1642 #1723	1641 N.E. Parkway	12-10-48	12-10-48
13+0	207.9	196.97	11.63		13+11.8		#1703	#1724	1650 #1724	1647 N.E. Parkway	12-10-48	12-10-48
13+52.0	207.5	197.02	10.99	13+52.0	13+60.5	13+71.0	#1703	#1724	1656 #1725	1653 N.E. Parkway	12-10-48	12-10-48
14+0	208.0	197.07	11.91		14+30.6	14+33.6	#1704	#1725	1662 #1726	1659 N.E. Parkway	12-10-48	12-10-48
15+0	208.7	197.17	12.31		14+86.1	14+89.1	#1705	#1726	1702 #1726	1703 N.E. Parkway	12-20-48	12-20-48
16+0	208.4	197.27	12.75		16+15.2	16+23.0	#1707	#1727	1708 #1727	1715 N.E. Parkway	12-20-48	12-20-48
16+15.2	209.6	197.29	12.72	16+15.2	16+29.2	16+26.0	#1707	#1727	1714 #1728	1721 N.E. Parkway	12-20-48	12-20-48
17+0	210.4	199.05	11.96		17+04.5	17+26.5	#1708	#1729	1720 #1729	1723 N.E. Parkway	12-20-48	12-20-48
18+0	211.3	199.95	11.96		17+62.6	17+83.5	#1709	#1780	1726 #1780	1733 N.E. Parkway	12-20-48	12-20-48
19+0	212.2	200.85	11.86		18+25.4	18+37.5	#1710	#1781	1732 #1781	1735 N.E. Parkway	12-20-48	12-20-48
19+49.0	212.3	201.27	11.64	19+49.0	18+79.0	19+44.0	#1711	#1782	1738 #1782	1745 N.E. Parkway	12-20-48	12-20-48
20+0	212.8	201.75	11.53		20+17	20+14	#1712	#1783	1742 #1783	1749 N.E. Parkway	12-20-48	12-20-48
21+0	213.1	202.65	11.18		21+31.3	21+29.3	#1713	#1784	1746 #1784	1753 N.E. Parkway	12-20-48	12-20-48
22					22+95.7	22+55.3	#1714	#1785	1750 #1785	1757 N.E. Parkway	12-20-48	12-20-48
22+0	213.7	203.55	10.65		22+43.5		#1715	#1786	1754 #1786	1761 N.E. Parkway	12-20-48	12-20-48
23+0	214.1	204.45	10.65				#1716	#1787	1758 #1787	1765 N.E. Parkway	12-20-48	12-20-48
23+28.4	214.3	204.67	10.00				#1717	#1788	1762 #1788	1769 N.E. Parkway	12-20-48	12-20-48
0+0	214.3	205.00	10.00	0+0	North 0+23	South	#1635		5178 Kensington		9-14-49	
1+0	213.9	205.10	9.15		1+31.7							
2+0	213.8	205.20	9.53									
3+0	214.0	205.30	8.75		3+03.9		#1958		5200 Kensington		9-15-67	
3+20.9					3+20.9		#1958		5206 Kensington		8-14-50	
4+0	215.1	205.40	9.83		4+41.5		#1959		5210 Kensington		8-14-50	
4+75.0	215.8	205.47	8.36	4+75.0	4+41.5		#1481		5224 Kensington		9-1-49	
5+0	216.2	205.50	8.65		5+41.6		#1090		5236 Kensington		5-18-50	
6+0	217.2	209.60	9.51		6+70.5		#1482		5302 Kensington		9-1-49	
7+0	218.0	209.70	10.87		7+17.7							
7+27.2	218.2	209.73	11.34	7+27.2	30+66.1							
0+00	218.00	210.50	7.5	Exist. 0+00								
0+32	219.2	211.46	7.7	0+32		6" stub N.E.	#16175		1601 N. Kidgewood		8-12-66	

LINE 4

Line 4 (Continued)

"Extension"

#1774 - 24 - 1744 Floberta - 12-20-48 - Brodie Pelly Co.
 #1775 - 24 - 1750 Floberta - 12-20-48 - Brodie Pelly Co.
 #1783 - 24 - 1739 N. E. Parkway - 12-20-48 - Brodie Pelly Co.
 #1785 - 24 - 1751 N. E. Parkway - 12-20-48 - Brodie Pelly Co.
 #1636 - 24 - 5122 Kensington - 9-14-49 - Pray Bros.
 #1637 - 24 - 5128 Kensington - 9-14-49 - Pray Bros.
 #631 - Top - 5202 Kensington - 4-21-50 - Cigno Reynolds
 #6647 - 16 - 5206 Kensington - 11-29-51 - Jack C. Day (6+61.6) repair 10/1/68
 #6650 - Top - 5200 Kensington - 11-29-51 - Jack C. Day (6507) 5.01 2-16-78. Jack Brunner (7+12.2)