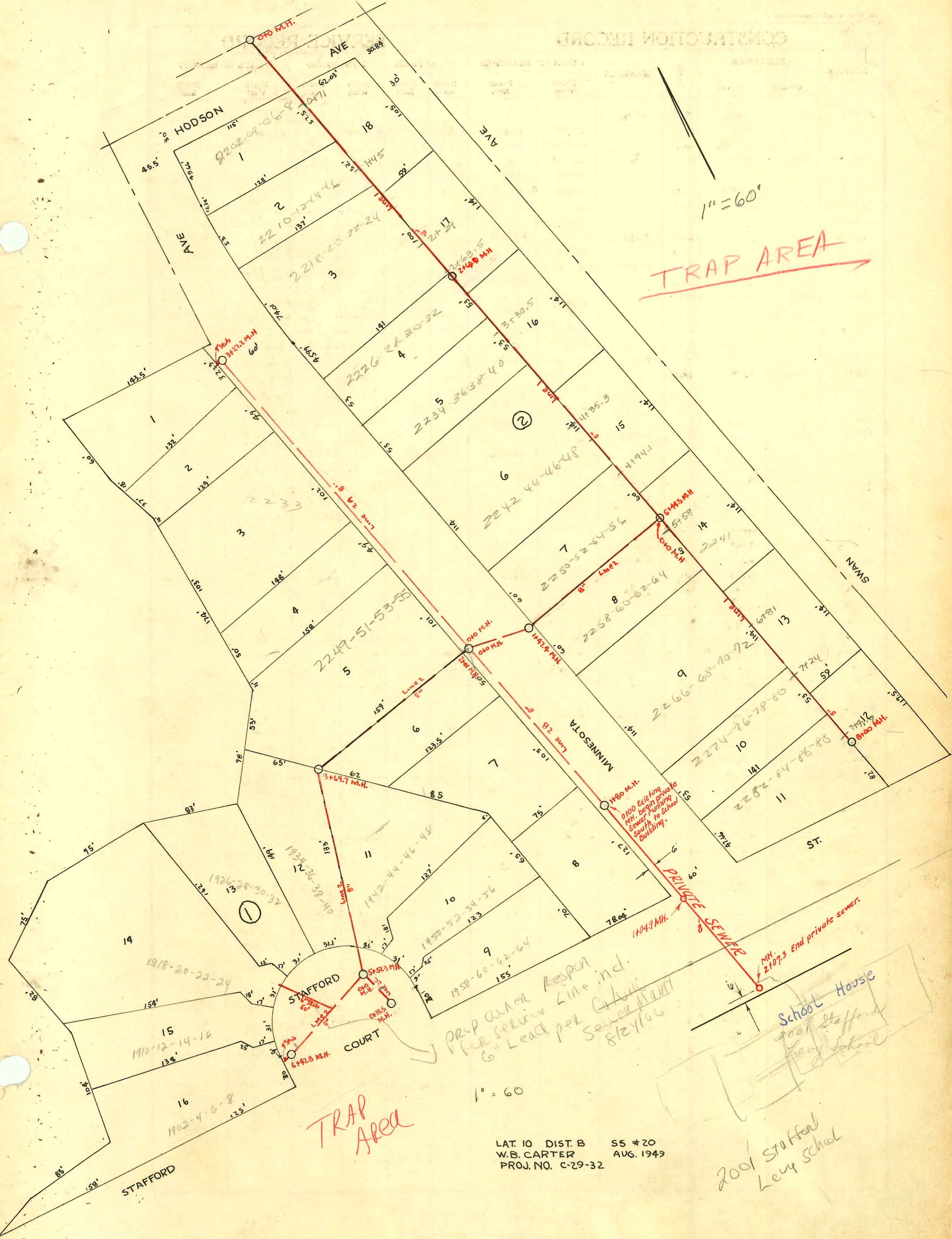


CONSTRUCTION RECORD



TRAP AREA

TRAP Area

PRP under respon
 for service line incl.
 6" Lead per Catwalk
 Sewer MAIN
 8/2/1960

School House
 2001 Stafford
 Levy School

LAT. 10 DIST. B SS #20
 W.B. CARTER AUG. 1949
 PROJ. NO. C-29-32

1" = 60'

CONSTRUCTION RECORD

SERVICE RECORD

LINE 1

STATION	ELEVATION		Depth	MANHOLE	4-INCH "Y" BRANCHES		No. of Permit		House Number		DATE OF PERMITS	
	Ground	Grade			North West	South East	North West	South East	North West	South East	North West	South East
0+00		90.90	8.52	0+00								
					0+71	0+68	#1340	C43591 #1365	2202 S. Minnesota	2201 S. Minn	8-23-49	2-21-74 8-25-49
1+00		91.00	8.81		1+45		#1341	C43767 #1366	2210 S. Minnesota	2211-17 S. Minn	8-23-49	3-1-74 8-25-49
2+00		91.10	6.91		2+29							
					2+63.5		#1343	C43592 #1367	2226 S. Minnesota	2221 S. Minn	8-23-49	2-21-74 8-25-50
2+69.0		91.17	7.69	2+69.0		2+97.5						
3+00		91.20	7.73		3+30.5		#1344		2234 S. Minnesota		8-23-49	
4+00		91.30	7.61		4+35.3	4+09.5	#1345	C43593 #1368	2242 S. Minnesota	2231 S. Minn	8-23-49	2-21-74 8-25-49
					1+4.1		#1346		2250 S. Minnesota		8-23-49	
5+00		91.40	8.04			5+26.0						
							S C44137 #1369		2241-49 S. Minn			3-26-74 8-25-49
5+44.5		91.44	7.88	5+44.5	5+58.0		#1347		2258 S. Minnesota		8-23-49	
6+00		91.50	7.10			6+2.5						
						6+40.9						
							C43594 #1370		2266 S. Minnesota	2251-57 S. Minn		2-21-74 8-25-49
7+00		91.60	5.93		6+81.0		#1348				8-23-49	
					7+24.0		#1349		2274 S. Minnesota		8-23-49	
					7+54.0		Sealy #1371		2261 S. Minnesota	2261-65-65-67 S. Minn		8-21-64 8-25-49
					7+91.9		#1350		2282 S. Minnesota		8-23-49	

LINE 2

0+00		91.64	7.61	0+00	STA. 5+44.5 0+00 LINE 1	Y NORTH	Y SOUTH					
1+00		91.74	6.23									
1+47.4		91.79	6.23	1+47.4								
2+01		91.84	6.53	2+01								
3+00		91.94	7.11									
3+69.7		92.01 FLO IN 92.21 FLO OUT	6.65 6.84	3+69.7				2003-03401 #1301	1942 R. Stafford Ct	see below		12-31-03 8-22-49
4+00		92.24	6.97									
5+00		92.34	6.12									
		92.39 FLO W 92.58 FLO OUT	5.76 5.73	5+51.3	5+83.0							
6+00		92.64	5.95		6+34.2		#1429		1934 Stafford Ct		8-30-49	
6+42.8		92.68	5.35	6+42.8	4" STUB WEST		#1428		1926 B Stafford Ct		8-30-49	
							#1431		1910 Stafford Ct		8-30-49	

LINE 2A

0+00		92.03		0+00	STA. 2+01 0+00 LINE 2	Y WEST	Y EAST					
1+00		92.13	6.87		1+25.0- 1+61.7			#1302 #1303	2249 S. Minnesota 2241 S. Minn		8-22-49 8-22-49	
2+00		92.23	8.73		2+57.0			#1305	2255 S. Minnesota		8-22-49	
3+00		92.33	6.72									
3+27.2		92.36	7.21	3+27.2	4" STUB W.			#1306	2217 S. Minnesota		8-22-49	

LINE 2B

0+00		92.03		0+00	STA. 2+01 0+00 LINE 2	Y WEST	Y EAST					
1+00		92.13	5.76		1+60.4			#1298 #1299 #1300	2257 S. Minnesota 2265 S. Minnesota 2273 S. Minnesota		8-22-49 8-22-49 8-22-49	
1+80		92.21	5.50	1+80								

LINE 2C

0+00		92.58	5.82	0+00	STA. 5+51.3 0+00 LINE 2	Y WEST	Y EAST					
0+35.5		92.62	5.71	0+35.5				9841397 #1425 9841387 #1426	1700 R Stafford Ct 1758 S. Stafford Ct		6-4-48 8-30-49 8-30-49	

PRIVATE SANITARY SEWER Built by Eby Const. Co. March, 1952

0+00	97.5	92.91	5.1	0+00	Exist. MH.
1+00	97.3	92.51	4.8		
1+04.9	97.8	92.52 out 92.52 in	5.3 4.3	1+04.9	
2+00	96.9	93.61	3.3		
2+07.3	96.6	93.62	3.0	2+07.3	

2003-03401-1031104-1942 Stafford - Wichita Exc. - tied back to clay tile 5' from main. - 1422, twin co, 4" sch 40 PVC, 1/8" fall

Refer C59786 - 2248 S. Minnesota - 2-9-79 - R. Hedges - C4137-59
 Ref. #1342 - 2278 S. Minnesota - 8-23-49 - Wichita Poly. Co.
 Ref. #1304 - 2233 S. Minnesota - 8-22-49 - Wichita Poly. Co.
 # 825 Connection in West Stafford & Minnesota - 4-7-52 - Kenace of Co.
 82517 (2001 E. Stafford) - Levy Schud. - 6-13-83 Lester Indermill
 10798 seal off tunnel Levy school line broke 7-7-59