

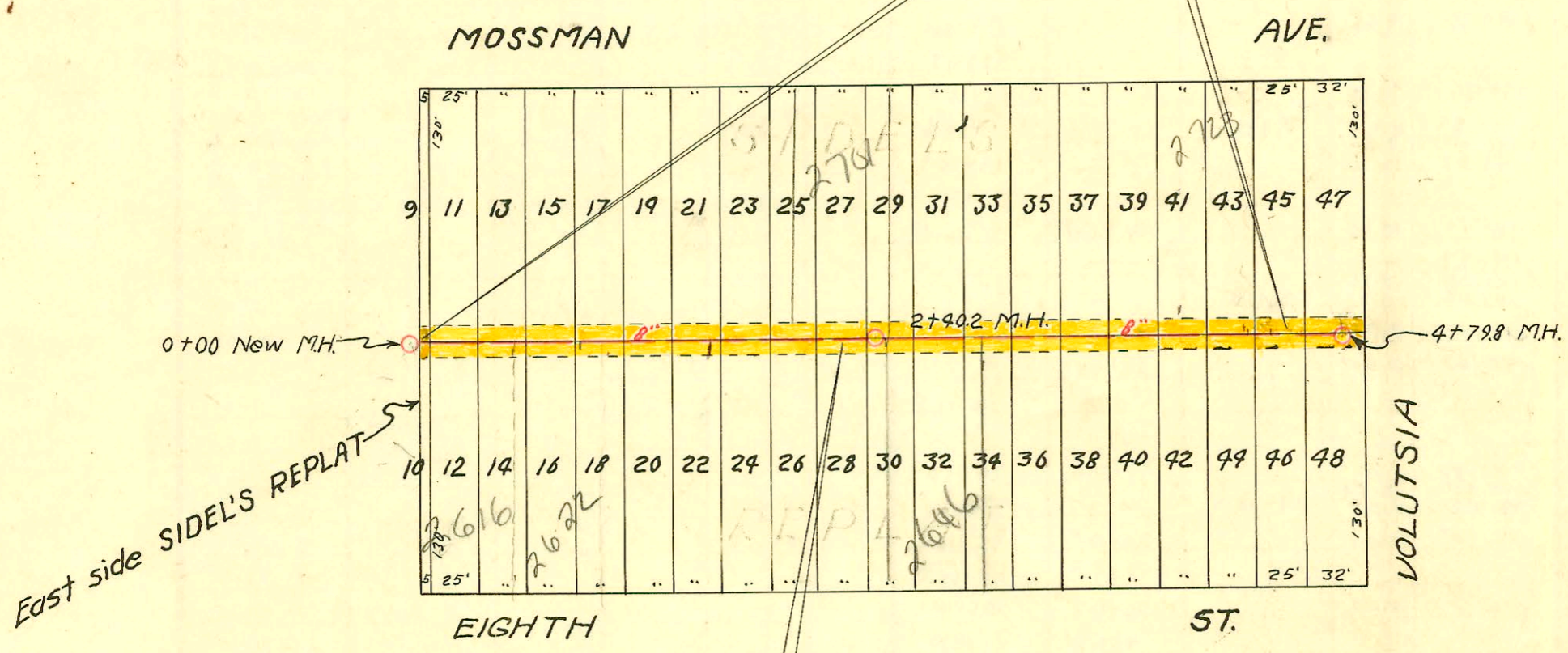
SERVICE RECORD

CONSTRUCTION RECORD

DATE	DESCRIPTION	BY	REVISION



Easement # 2365 Rear eight (8) feet of the following described lots: Lot 10 (E. 5'), 42, 44, 46, and 48, on Eighth Street, Alice's Subdivision, City of Wichita, Sedgewick County, Kansas, and Lot 9 (E. 5') 45, and 47, on Mossman Avenue, Alice's Subdivision, City of Wichita, Sedgewick County, Kansas.



Easement # 2366 Rear eight (8) feet of the following described lots: 16, 18, 20, on Eighth Street, Alice's Subdivision, City of Wichita, Sedgewick County, Kansas, 17 and 19, on Mossman Avenue, Alice's Subdivision, City of Wichita, Sedgewick County, Kansas, Lot 12, 14, 22, 24, 26, 28, 30, 32, 34, 36, 38, 40, on Eighth Street, Alice's Subdivision, City of Wichita, Sedgewick County, Kansas, and Lot 11, 13, 15, 21, 23, 25, 27, 29, 31, 33, 35, 37, 39, 41, and 43, on Mossman Avenue, Alice's Subdivision, City of Wichita, Sedgewick County, Kansas.

LAT. 10, DIST. E., SS #12
 City of Wichita, Kansas
 L.K. White City Engineer
 Aug. 8, 1998 Project 70.C29-12
 W.B. Carter

CONSTRUCTION RECORD						SERVICE RECORD						
STATION	ELEVATION		Depth	MANHOLE	4-INCH "Y" BRANCHES		No. of Permit		House Number		DATE OF PERMITS	
	Ground	Grade			North West	South East	North West	South East	North West	South East	North West	South East
0+0	125.3	115.61	10.58	0+0								
					0+34	0+37	#3382	#26270 #3394	2617 E. Mossman	2616 E. E. 8th	12-14-50	10-31-50
					0+85.8	0+88.8	#3383	#3395	2621 E. Mossman	2622 E. E. 8th	12-14-50	12-6-52
1+0	126.2	115.91	10.97									
					1+33.8	1+36.8	#1658		2627 E. Mossman		7-17-50	
					1+63.4	1+67.4	#1659		2631 E. Mossman		7-17-50	
2+0	127.7	116.21	12.15									
					2+03		#3357		2707 E. Mossman		2-20-50	
						2+12.3						
						2+33.6						
2+40.2	128.4	116.33	12.64	2+40.2								
						2+82.3						
3+0	129.3	116.51	13.46									
						3+09.5						
					3+18		#1661		2711 E. Mossman		7-17-50	
					3+39							
						3+87.6						
4+0	130.5	116.81	14.37									
					4+17.6		#2252		2731 Mossman		10-23-49	
						4+30.8		#1359		901 N. Salutia		8-24-49
						4+52.7		#1360		907 N. Salutia		8-24-49
4+79.8	130.6	117.05	13.57	4+79.8								

#1660 - tap - 2707 E. Mossman - 7-17-50 - G. N. Hanno
 #1662 - tap - 2717 E. Mossman - 7-17-50 - G. N. Hanno
 #5834 - tap - 915 N. Salutia - 8-20-51 - Ho. Magruder
 #3401 - tap - 2658 E. 8th - 12-6-52 - Eugene Reynolds
 #3396 - tap - 2628 E. 8th } Eugene Reynolds
 #3397 - tap - 2634 E. 8th } 12-6-52
 #3398 - tap - 2640 E. 8th }
 #3399 - tap - 2646 E. 8th }
 #3400 - tap - 2652 E. 8th }