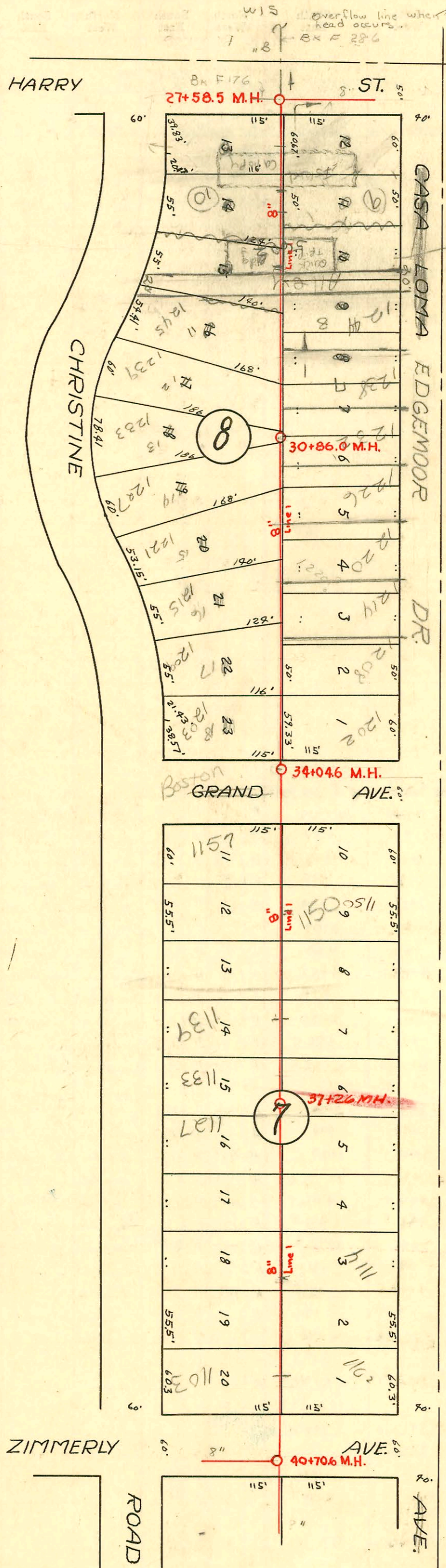


CONSTRUCTION RECORD SERVICE RECORD



SWR2003-03006 11/17/03 1157 S Christine - 2 ferroc, 1V22, 1TWINCO, shallow, tied in 2' from main

2003-01740-7/21/03-1114 Edgemoor - Redd Root r. Replaced lower 10' 175.1' N of MH 40+70.6 (38+95.5) 4" SCH40, 14" fall, 2V22, Predco Saddle

2002-02612 9/23/02-1102 S Edgemoor - Padgett Ex 4" PVC, 1TWINCO, 2H45, 1V45, 2V22, city wye repair - 4" Predco 79.5' S of MH 40+70.6 (37+91.1) shallow

LAT 36 & 39 D.C.S. DRY CREEK S.S. S.S.#12 1949 PROJ. NO. C-2919 C-29-31

W.B. CARTER L.K. WHITE, CITY ENGINEER

- 2000-02241-10/17/03-1133 S Christine - AE Henning - 4" SCH40 PVC - Donut
- 1999-01417-12/19/99-1139 S Christine - Bucks Backhoe - 4" SCH40 - Tied to clay stub, stub is 4' long Stub is in wye connection
- 2000-01208- Repair - 1139 S Christine St - Bucks Backhoe - City made y repair. No work was done by PL Drain layer opened ditch for city repair crew. 32.1' S of MH 37+26 - 4" SCH40 - 4" WYE (37+58.1)
- 2001-0003- Repair - 1005 S Pine Ridge - Labi - Boardman - 4" SCH40 - Ferroc to clay - 34.5' S of MH 51+48.5 (51+06) 1TWINCO, 1022, 1V45, 2H45, 4" Ferroc to clay 1' from main, 4" Ferroc to Cast Iron at house
- 2001-00736- 4/3/01-1103 Christine - Wichita Plb - 4" SCH40 - 1TWINCO, 2V22, 2H22, Ferroc to clay 10' from main, Ferroc to CI @ house

