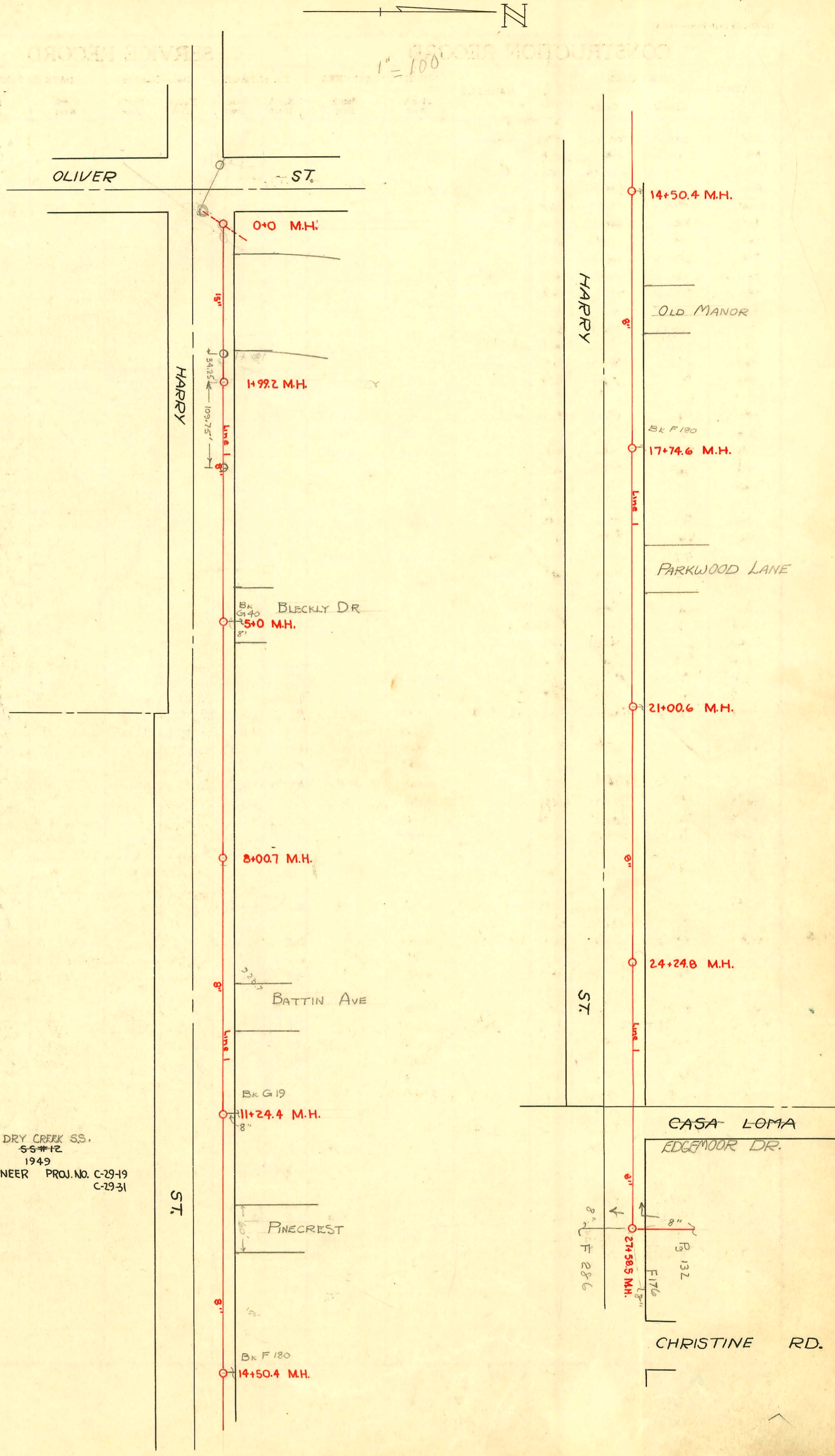


1" = 100'



DRY CREEK SS.
 LAT. 36 & 39 D.C.S. 55#12
 W.B. CARTER 1949
 L.K. WHITE, CITY ENGINEER PROJ. NO. C-29-19
 C-29-31

CONSTRUCTION RECORD

SERVICE RECORD

STATION	ELEVATION		Depth	MANHOLE	4-INCH "Y" BRANCHES		No. of Permit		House Number		DATE OF PERMITS	
	Ground	Grade			North West	South East	North West	South East	North West	South East	North West	South East
	120.0	122.80	15.20	OVER D.C.S.								
0+0	+36.5	+28.02	8.4	0+0								
1+0	132.0	125.20	6.80									
1+99.3	139.6	128.12	11.48	1+99.3	NEW 1714	1+48.1	138.50	125.20	OUT			
3+0	141.5	134.68	7.99									
4+0	143.3	134.78	10.35									
5+0	145.6	134.88	12.92	5+0								
6+0	147.9	134.98	14.55									
7+0	149.4	135.08	16.59									
8+00.7	149.5	135.18	15.49	8+00.7								
9+0	150.2	135.28	15.05									
10+0	149.4	135.38	14.73									
11+0	149.8	135.48	15.48									
11+24.4	149.6	135.51	15.25	11+24.4								
12+0	149.4	135.58	14.82									
13+0	150.8	135.68	15.30									
14+0	149.0	135.78	14.03									
14+50.4	148.8	135.83	14.03	14+50.4								
15+0	148.7	135.88	13.21									
16+0	148.3	135.98	12.92									
17+0	148.7	136.08	12.51									
17+74.6	148.4	136.16	12.58	17+74.6								
18+0	148.5	136.18	12.77									
19+0	148.1	136.28	12.92									
20+0	147.8	136.38	12.75									
21+00.6	147.8	136.48	12.59	21+00.6								
22+0	147.5	136.58	12.09									
23+0	146.9	136.68	11.31									
24+0	146.6	136.78	10.55									
24+24.8	146.6	136.81	10.34	24+24.8								
25+0	146.2	136.88	9.79									
26+0	146.2	136.98	10.04									
27+0	145.7	137.08	9.28									
27+58.5	145.7	137.14	9.00	27+58.5								
0+0	152.2	143.00	9.71	0+0 = 5+79.2	0+26	0+29	#2139	#2141	1064	1069	10-24-49	10-24-49
					+81	+84	#2140	#2142	1062	1063	10-24-49	10-24-49
1+0	151.8	143.10	9.46		1+40	1+43	#1916	#1906	1056	1057	10-6-49	10-6-49
					+95	+98	#1917	#1907	1050	1051	10-6-49	10-6-49
2+0	152.2	143.20	9.95		2+51	2+54	#1918	#1908	1044	1045	10-6-49	10-6-49
3+0	152.3	143.30	10.85		3+06	3+09	#1919	#1909	1038	1039	10-6-49	10-6-49
3+21	153.6	143.32	10.88	3+21	+60	+63	#1920	#1910	1032	1033 R	10-6-49	9-22-49
3+21	145.00	145.00	9.20		4+19	4+22	#1921	#1911	1026 R	1027	10-6-49	10-6-49
4+0	154.0	145.08	9.76		+71	+74	#1922	#1912	1020	1021	10-6-49	10-6-49
5+0	154.9	145.18	10.46		5+27	5+30	#1923	#1913	1014	1015	10-6-49	10-6-49
					+82.5	+85.5	#1924	#1914	1008	1007	10-6-49	10-6-49
6+0	155.7	145.28	11.08		6+35.5	6+38.5	#1925	#1915	1002	1001	10-6-49	10-6-49
6+50	155.5	145.33	11.00	6+50								
0+0	146.0	139.90	6.83	0+0 = 8+70	0+42	0+39	#2143	#2161	1074	1063	10-24-49	10-24-49
					0+97	+94	#2144	#2162	1068 R	1057	11-9-48	10-24-49
1+0	145.7	140.03	6.43		1+46	1+43	#2145	#2163	1062	1051	10-24-49	10-24-49
					+95	+92	#2146	#2164	1056	1045	10-24-49	10-24-49
2+0	146.7	140.13	7.46		2+44.5	2+41.5	#2149	#2165	1050	1039	10-24-49	10-24-49
2+86	147.6	140.22	8.32	2+86	+96.5	+93.5	#2150	#2166	1044	1033	10-24-49	10-24-49
3+0	147.9	140.23	8.46		3+45	3+42	#2152	#2167	1038	1027 R	10-24-49	9-6-02
					+94	+91	#2153	#2168	1032	1021	10-24-49	10-24-49
4+0	148.8	140.33	9.18		4+44.5	4+41.5	#2154	#2169	1026	1015	10-24-49	10-24-49
5+0	150.0	140.43	10.27		+97	+94	#2155	#2170	1020	1009	10-24-49	10-24-49
5+0	↓	↓	↓		5+49	5+46	#2156	#2171	1014	1001	10-24-49	10-24-49
5+70.5	151.1	143.00	8.80	5+70.5								
6+0	151.3	143.03	9.05		6+17	6+14	#2157		1008	961	10-24-49	10-24-49
					6+48.5	6+45.5	#2158		1002	949	10-24-49	10-24-49
7+0	152.5	143.13	10.22		7+13.0	7+10.0	#2159		926	926	10-24-49	10-24-49
8+0	153.5	143.23	10.84		8+23.5	8+20.5	#2174		931	931	10-24-49	10-24-49
8+55	153.8	143.28	11.43	8+55								
9+0	153.8	143.33	11.25									
9+24.5	153.8	143.35	11.57	9+24.5								

Line I

Line 4

Line 5

NEW 1714 1+48.1 138.50 125.20 OUT
 Note: Line lowered bet. of 00 & 1+48.1
 10-21-59.

27+58.5 for the Cont'd Line I See pg 132

0+0 = 5+79.2

4" SCH 40 - CO

4" SCH 40 - CO

0+0 = 8+70

4" SCH 40 - CO

for Line 5-A See pg. 132.

#2176 - 2nd - 937 Waverly - 10-24-49
 #2175 - 2nd - 943 Waverly - 10-24-49
 #2173 - 2nd - 955 Waverly - 10-24-49
 Char W. Burgess
 118-24-49 McCullough
 (use at 6+70.5) no meas.
 on permits on microfilm